

2. Referrals waiting to be seen

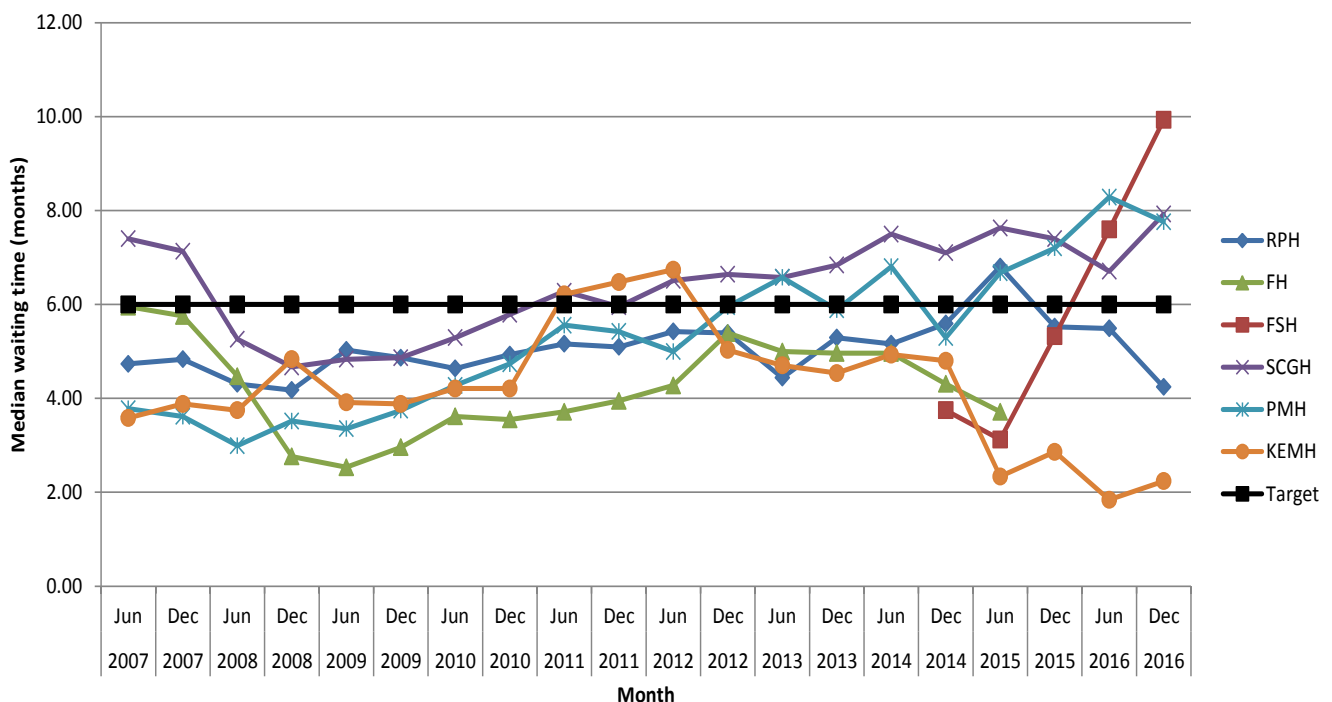
2.1 Waiting time (in months) for referrals²

Figure 1 and Table 1 display the median waiting time (in months) of referrals that are yet to have a first appointment. This is the median waiting time from the point of referral being received to the end of the reporting month. The nominal target is for the referral to be seen within six months.

At the end of December 2016, the median waiting time at metropolitan tertiary hospitals was 7.66 months, which is an increase of 1.45 months (23.3%) when compared with the median waiting time in December 2015, and an increase of 2.24 months compared with June 2007.

For referrals that are yet to have a first appointment at Royal Perth Hospital Wellington Street Campus, the median waiting time was more than six months in June 2015. For referrals that are yet to have a first appointment at Princess Margaret Hospital, the median waiting time was more than six months in June 2013, June 2014, June 2015, December 2015, June 2016 and December 2016. The median waiting time for referrals that are yet to have a first appointment at King Edward Memorial Hospital exceeded six months in June 2011, December 2011 and June 2012. Sir Charles Gairdner Hospital had a median waiting time for referrals that are yet to have a first appointment longer than six months for thirteen out of the twenty months reported. Fiona Stanley Hospital had a median waiting time for referrals that are yet to have a first appointment longer than six months in June 2016 and December 2016.

Figure 1: Median waiting time (in months) for referrals to a public outpatient surgical clinic at metropolitan tertiary hospitals yet to be seen for a first appointment



² Note there is no Fremantle Hospital data from July 2015 onwards as this site has been designated a specialist hospital as Fiona Stanley Hospital has become fully operational. Therefore, care needs to be taken when comparing data from July 2015 onwards to data prior to this month.

Table 1: Median waiting time (in months) for referrals to a public outpatient surgical clinic at metropolitan tertiary hospitals yet to be seen for a first appointment³

End of month	Adult Tertiary Hospitals					Princess Margaret Hospital for Children	King Edward Memorial Hospital for Women	Total
	Royal Perth Hospital Wellington Street Campus	Fremantle Hospital	Fiona Stanley Hospital	Transfers to Fiona Stanley Hospital from other Tertiary Hospitals	Sir Charles Gairdner Hospital			
June 2007	4.73	5.95	-	26.45	7.40	3.78	3.58	5.42
December 2007	4.83	5.75	-	32.50	7.13	3.62	3.88	5.39
June 2008	4.31	4.47	-	30.38	5.26	2.99	3.75	4.31
December 2008	4.18	2.76	-	8.83	4.67	3.52	4.83	3.91
June 2009	5.03	2.53	-	11.56	4.83	3.35	3.91	3.95
December 2009	4.87	2.96	-	14.76	4.87	3.75	3.88	4.01
June 2010	4.64	3.62	-	14.50	5.29	4.27	4.21	4.41
December 2010	4.93	3.55	-	16.14	5.79	4.73	4.21	4.70
June 2011	5.16	3.72	-	19.15	6.28	5.56	6.21	5.06
December 2011	5.10	3.95	-	12.99	5.95	5.42	6.48	5.16
June 2012	5.42	4.27	-	6.35	6.51	5.00	6.74	5.39
December 2012	5.39	5.39	-	8.45	6.64	5.95	5.03	5.95
June 2013	4.44	5.00	-	6.84	6.58	6.58	4.70	5.49
December 2013	5.29	4.96	-	3.91	6.84	5.88	4.54	5.75
June 2014	5.16	4.96	-	3.78	7.50	6.81	4.93	5.88
December 2014	5.59	4.31	3.75	-	7.10	5.29	4.80	5.56
June 2015	6.81	3.72	3.12	-	7.63	6.67	2.33	5.49
December 2015	5.52	-	5.33	-	7.40	7.20	2.86	6.21
June 2016	5.49	-	7.59	-	6.71	8.28	1.84	6.87
December 2016	4.24	-	9.93	-	7.92	7.76	2.24	7.66

³ Fiona Stanley Hospital has accepted referrals from other hospitals that have referral dates prior to Fiona Stanley Hospital opening. As the data and calculations are based on date of referral, a separate column 'Transfers to Fiona Stanley Hospital from other Tertiary Hospitals' has the historical perspective included.

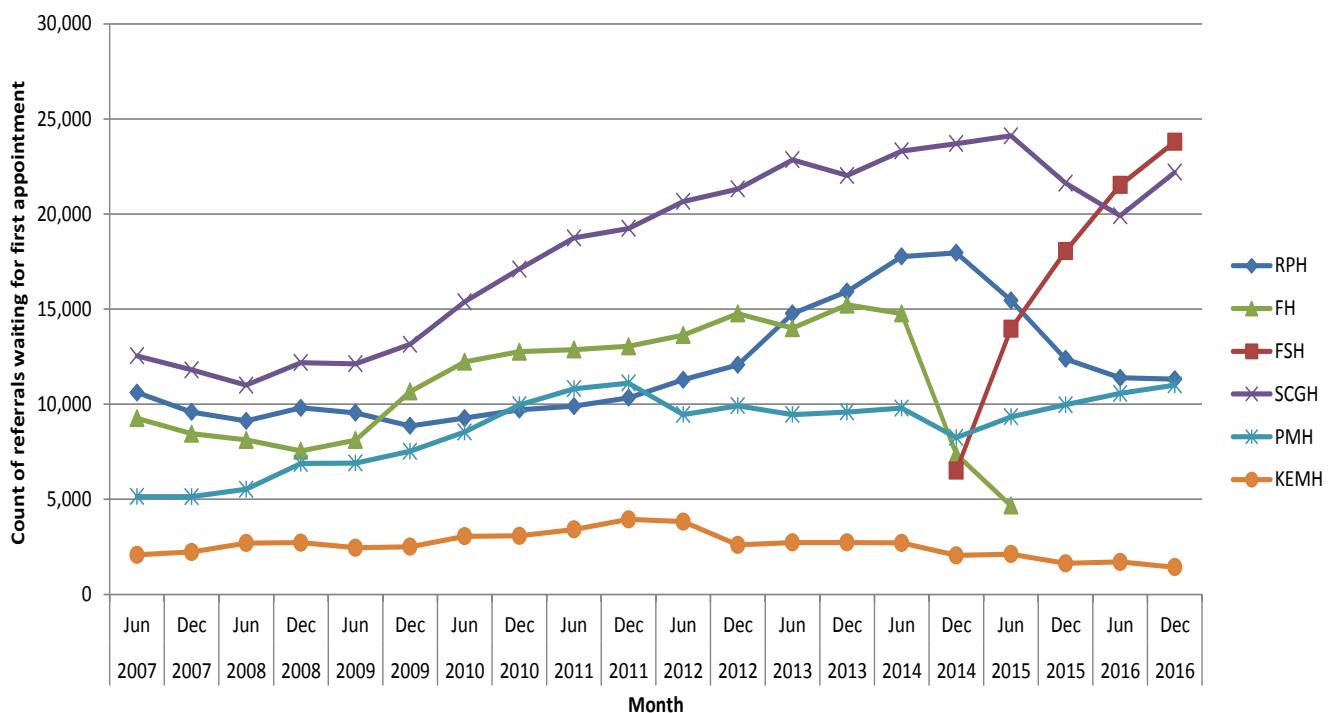
2.2 Number of referrals⁴

Figure 2 and Table 2 display the number of referrals to a public outpatient surgical clinic at metropolitan tertiary hospitals that are yet to have a first appointment. This is the number of referrals yet to be seen as at the end of the reporting month.

The total number of referrals yet to be seen at metropolitan tertiary hospitals has steadily grown since June 2007, peaked in June 2014 and has moderated since then. In December 2016, the number of referrals yet to be seen at metropolitan tertiary hospitals was 69,741, which is an increase of 6,091 (or 9.6%) compared to the 63,650 referrals in December 2015 and a 30,085 (or 75.9%) increase in referrals compared to the 39,656 referrals recorded in June 2007.

Since June 2007, approximately 32.1% of the increase in referral numbers was to clinics at Sir Charles Gairdner Hospital, although this increase has moderated since June 2015.

Figure 2: Number of referrals to a public outpatient surgical clinic at metropolitan tertiary hospitals yet to be seen for a first appointment



⁴ Note there is no Fremantle Hospital data from July 2015 onwards as this site has been designated a specialist hospital as Fiona Stanley Hospital is fully operational. Therefore, care needs to be taken when comparing data from July 2015 onwards to data prior to this month.

Table 2: Number of referrals to a public outpatient surgical clinic at metropolitan tertiary hospitals yet to be seen for a first appointment⁵

End of month	Adult Tertiary Hospitals					Princess Margaret Hospital for Children	King Edward Memorial Hospital for Women	Total
	Royal Perth Hospital Wellington Street Campus	Fremantle Hospital	Fiona Stanley Hospital	Transfers to Fiona Stanley Hospital from other Tertiary Hospitals	Sir Charles Gairdner Hospital			
June 2007	10,615	9,266	-	4	12,542	5,146	2,083	39,656
December 2007	9,590	8,446	-	4	11,807	5,140	2,232	37,219
June 2008	9,117	8,119	-	6	10,997	5,529	2,700	36,468
December 2008	9,807	7,544	-	10	12,186	6,881	2,725	39,153
June 2009	9,542	8,114	-	12	12,129	6,905	2,451	39,153
December 2009	8,861	10,665	-	19	13,151	7,525	2,504	42,725
June 2010	9,273	12,229	-	23	15,382	8,541	3,055	48,503
December 2010	9,707	12,758	-	28	17,104	9,967	3,081	52,645
June 2011	9,898	12,875	-	34	18,743	10,813	3,418	55,781
December 2011	10,334	13,046	-	55	19,245	11,112	3,946	57,738
June 2012	11,280	13,634	-	101	20,659	9,457	3,825	58,956
December 2012	12,066	14,770	-	157	21,314	9,916	2,600	60,823
June 2013	14,764	14,001	-	297	22,852	9,456	2,729	64,099
December 2013	15,921	15,228	-	797	22,024	9,590	2,730	66,290
June 2014	17,766	14,770	-	2,252	23,317	9,789	2,710	70,604
December 2014	17,957	7,361	6,512	-	23,704	8,245	2,050	65,829
June 2015	15,458	4,668	13,961	-	24,111	9,337	2,118	69,653
December 2015	12,382	-	18,050	-	21,619	9,970	1,629	63,650
June 2016	11,387	-	21,521	-	19,908	10,570	1,707	65,093
December 2016	11,312	-	23,794	-	22,196	11,008	1,431	69,741

⁵ Fiona Stanley Hospital has accepted referrals from other hospitals that have referral dates prior to Fiona Stanley Hospital opening. As the data and calculations are based on date of referral, a separate column 'Transfers to Fiona Stanley Hospital from other Tertiary Hospitals' has the historical perspective included.

3. Referrals that have been seen

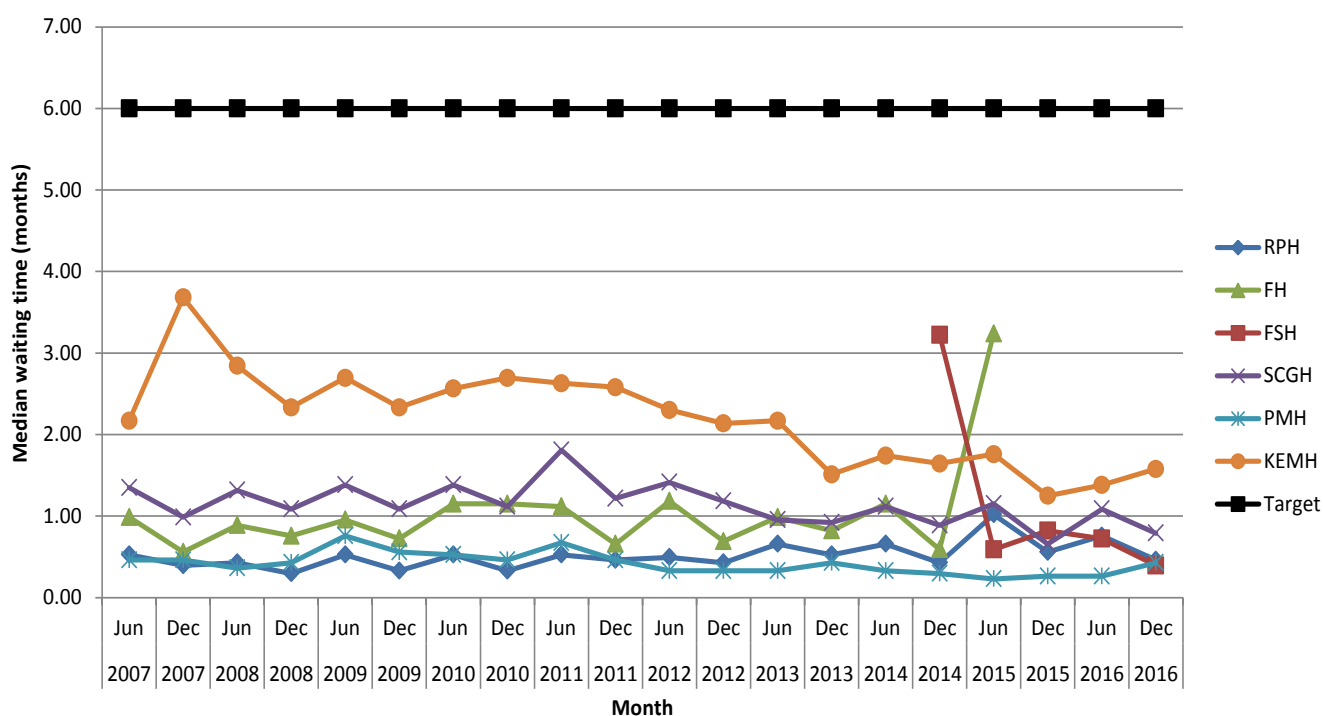
3.1 Waiting time (in months) to the first appointment⁶

Figure 3 and Table 3 display the median waiting time (in months) for referrals to a public outpatient surgical clinic at metropolitan tertiary hospitals that had a first appointment during the reported month. This is the median waiting time from the point of referral being received to being seen for a first appointment at a public outpatient surgical clinic.

In December 2016, the median waiting time at metropolitan tertiary hospitals was 0.59 months, which is an increase of 0.10 months (20.0%) when compared with the median waiting time in December 2015.

The median waiting times for all metropolitan tertiary hospitals are well below the Government’s target of six months. This is in contrast to overall median waiting times of referrals yet to have a first appointment, which are mostly between four and six months.

Figure 3: Median waiting time (in months) for referrals to a public outpatient surgical clinic at metropolitan tertiary hospitals that had a first appointment



⁶ Note there is no Fremantle Hospital data from July 2015 onwards as this site has been designated a specialist hospital as Fiona Stanley Hospital is fully operational. Therefore, care needs to be taken when comparing data from July 2015 onwards to data prior to this month.

Table 3: Median waiting time (in months) for referrals to a public outpatient surgical clinic at metropolitan tertiary hospitals that had a first appointment

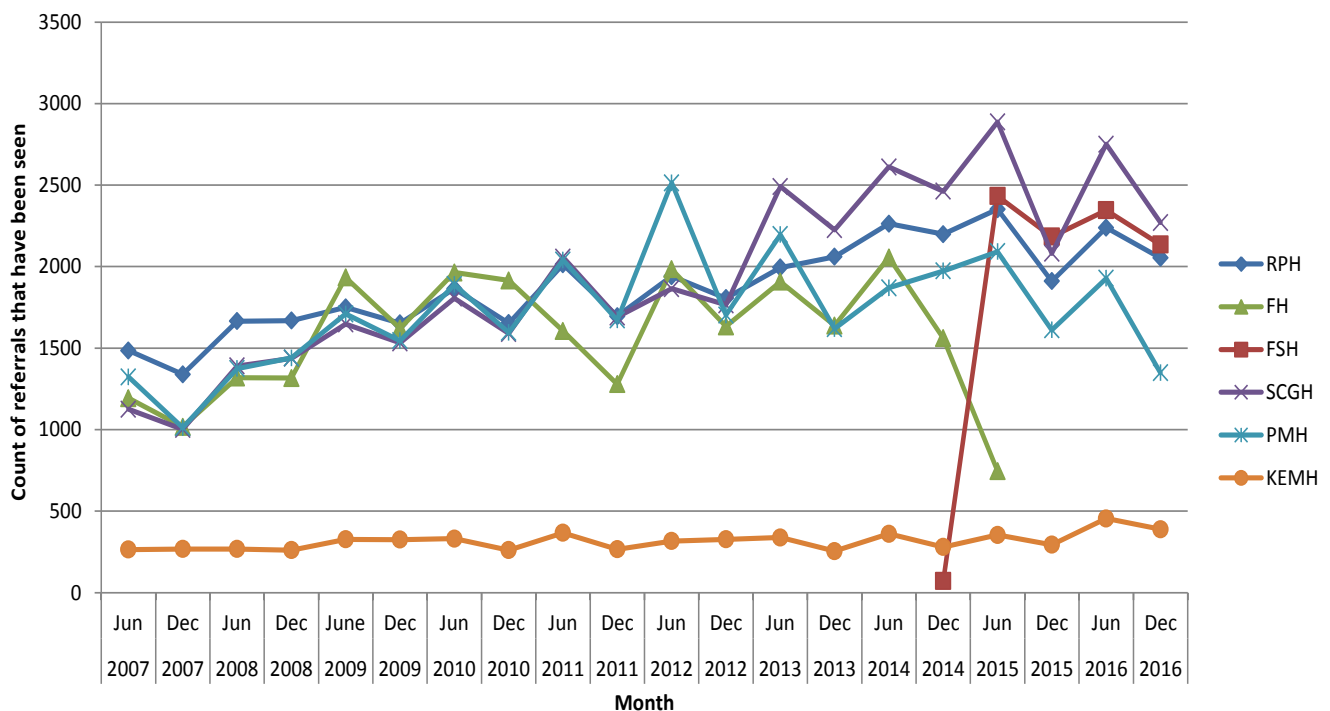
Month of appointment	Adult Tertiary Hospitals				Princess Margaret Hospital for Children	King Edward Memorial Hospital for Women	Total
	Royal Perth Hospital Wellington Street Campus	Fremantle Hospital	Fiona Stanley Hospital	Sir Charles Gairdner Hospital			
June 2007	0.53	0.99	-	1.35	0.46	2.17	0.89
December 2007	0.39	0.56	-	0.99	0.46	3.68	0.62
June 2008	0.43	0.89	-	1.32	0.36	2.84	0.72
December 2008	0.30	0.76	-	1.08	0.43	2.33	0.59
June 2009	0.53	0.95	-	1.38	0.76	2.70	0.95
December 2009	0.33	0.72	-	1.08	0.56	2.33	0.69
June 2010	0.53	1.15	-	1.38	0.53	2.56	0.95
December 2010	0.33	1.15	-	1.12	0.46	2.70	0.79
June 2011	0.53	1.12	-	1.81	0.67	2.63	1.08
December 2011	0.46	0.66	-	1.22	0.46	2.58	0.72
June 2012	0.49	1.18	-	1.41	0.33	2.30	0.85
December 2012	0.43	0.69	-	1.18	0.33	2.14	0.66
June 2013	0.66	0.99	-	0.95	0.33	2.17	0.79
December 2013	0.53	0.82	-	0.92	0.43	1.51	0.66
June 2014	0.66	1.15	-	1.12	0.33	1.74	0.89
December 2014	0.43	0.59	3.22	0.89	0.30	1.64	0.56
June 2015	1.02	3.24	0.59	1.15	0.23	1.76	0.89
December 2015	0.56	-	0.82	0.66	0.26	1.25	0.49
June 2016	0.76	-	0.72	1.08	0.26	1.38	0.72
December 2016	0.46	-	0.39	0.79	0.43	1.58	0.59

3.2 Number of referrals⁷

Figure 4 and Table 4 display the number of referrals to a public outpatient surgical clinic at metropolitan tertiary hospitals that have had a first appointment. This is the number of referrals that were seen during the reporting month.

In December 2016, the number of referrals that have been seen at metropolitan tertiary hospitals was 8,196, which is an increase of 115 (or 1.4%) compared with the 8,081 referrals in December 2015, and 52.1% more than the number of referrals seen in June 2007. This is a compound annual growth rate of 4.5%, with fluctuations characterised by highs in June generally followed by lower numbers in December. This may be related to the onset of winter in the middle of the year, and reduced availability of medical and clinical staff during the end of the calendar year period.

Figure 4: Number of referrals to a public outpatient surgical clinic at metropolitan tertiary hospitals that had a first appointment



⁷ Note there is no Fremantle Hospital data from July 2015 onwards as this site has been designated a specialist hospital as Fiona Stanley Hospital is fully operational. Therefore, care needs to be taken when comparing data from July 2015 onwards to data prior to this month.

Table 4: Number of referrals to a public outpatient surgical clinic at metropolitan tertiary hospitals that had a first appointment⁸

Month of appointment	Adult Tertiary Hospitals				Princess Margaret Hospital for Children	King Edward Memorial Hospital for Women	Total
	Royal Perth Hospital Wellington Street Campus	Fremantle Hospital	Fiona Stanley Hospital	Sir Charles Gairdner Hospital			
June 2007	1,485	1,193	-	1,125	1,323	264	5,390
December 2007	1,339	1,017	-	1,001	1,012	268	4,637
June 2008	1,665	1,319	-	1,390	1,375	268	6,017
December 2008	1,669	1,316	-	1,437	1,440	261	6,123
June 2009	1,750	1,933	-	1,648	1,710	327	7,368
December 2009	1,652	1,621	-	1,532	1,545	325	6,675
June 2010	1,865	1,964	-	1,806	1,890	331	7,856
December 2010	1,653	1,915	-	1,590	1,596	261	7,015
June 2011	2,013	1,605	-	2,058	2,040	367	8,083
December 2011	1,696	1,279	-	1,691	1,672	266	6,604
June 2012	1,941	1,984	-	1,865	2,514	317	8,621
December 2012	1,806	1,633	-	1,765	1,703	327	7,234
June 2013	1,994	1,907	-	2,491	2,196	338	8,926
December 2013	2,060	1,638	-	2,226	1,619	255	7,798
June 2014	2,263	2,056	-	2,611	1,870	361	9,161
December 2014	2,199	1,561	72	2,462	1,973	280	8,547
June 2015	2,352	746	2,433	2,887	2,092	354	10,864
December 2015	1,911	-	2,184	2,081	1,611	294	8,081
June 2016	2,239	-	2,346	2,750	1,928	455	9,718
December 2016	2,053	-	2,135	2,270	1,349	389	8,196

⁸ The increase in referrals that have had a first appointment at Fiona Stanley Hospital for June 2015 reflects the outpatient clinics at this hospital are now operational. Referrals that would have previously been referred to the clinics at Fremantle Hospital and Royal Perth Hospital Shenton Park Campus, are now handled at Fiona Stanley Hospital.

3.3 Outpatient appointment outcomes⁹

Figure 5 and Table 5 refer to the outcomes of outpatient appointments at metropolitan tertiary hospitals that either resulted in a placement on the elective surgery waiting list or had an unknown outcome. The figures indicate that a small percentage of appointments result in placement on the elective surgery waiting list.

The low percentage of appointment outcomes resulting in a placement on the elective surgery waiting list reflects that patient pathways often consist of multiple appointments prior to a decision being made to place the patient on the elective surgery waiting list. In addition, some appointments that result in placement on the elective surgery waiting list may also require a subsequent appointment, and the coding may reflect the latter outcome. For these two reasons, relatively few appointments have the outcome resulting in a placement on the elective surgery waiting list.

Since 2007, the proportion of appointments that result in placement on a waiting list is approximately 6.9%. The 2016 full year figure of 8.0% indicates that with increased total number of appointments compared with previous years, more appointments are being placed on the elective surgery waiting list.

There still is a percentage of appointments with unknown outcomes, although the figure is reducing over time; from 13.5% in 2007 to 3.1% in December 2016.

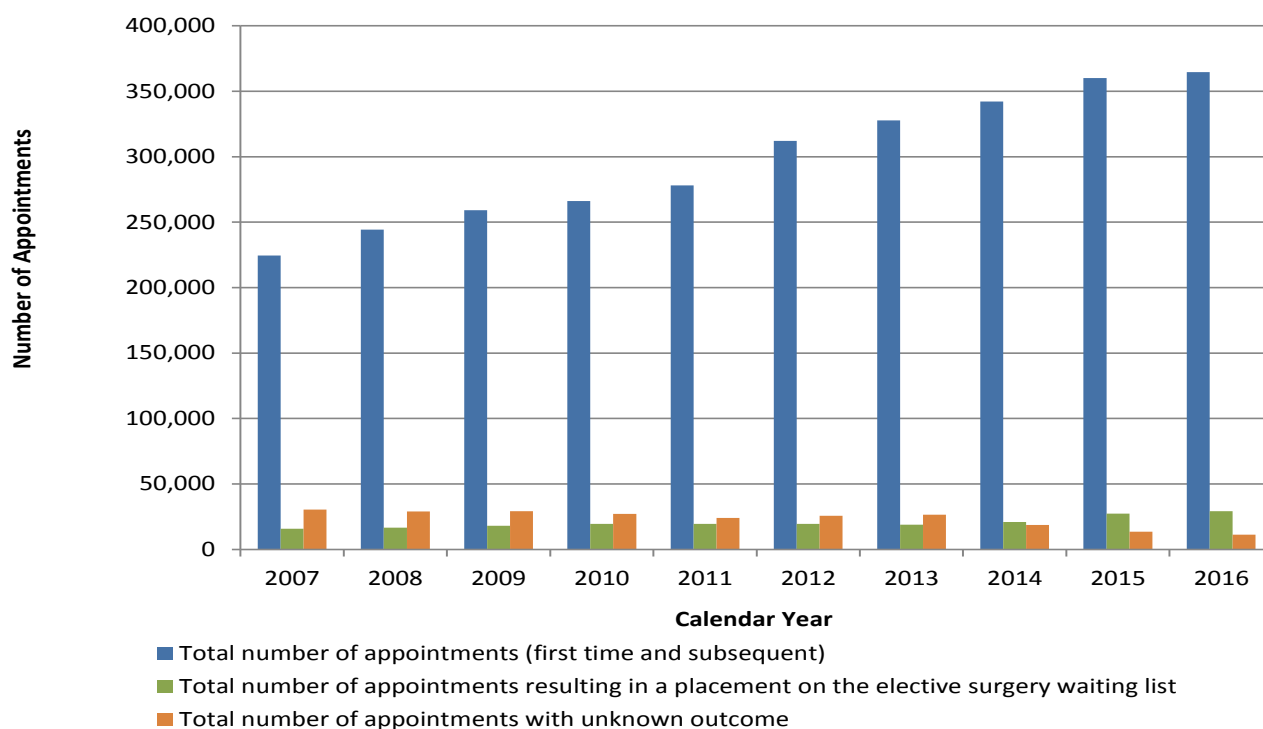
It must be noted that the data collection system and work processes continue to be refined, therefore caution is advised when interpreting the data. The figures are subject to change as systems and processes improve over time.

⁹ Note there is no Fremantle Hospital data from July 2015 onwards as this site has been designated a secondary hospital as Fiona Stanley Hospital is fully operational. Therefore, care needs to be taken when comparing data from July 2015 onwards to data prior to this month.

Table 5: Outcomes of outpatient appointments at public outpatient surgical clinics at metropolitan tertiary hospitals

Referral Year (calendar year)	Total number of appointments (first time and subsequent)	Total number of appointments resulting in a placement on the elective surgery waiting list	% of appointments placed on the elective surgery waiting list	Total number of appointments with unknown outcome	% of appointments with unknown outcome
2007	224,594	15,805	7.0%	30,411	13.5%
2008	244,262	16,626	6.8%	28,969	11.9%
2009	259,129	18,087	7.0%	29,144	11.2%
2010	266,067	19,542	7.3%	27,123	10.2%
2011	278,194	19,593	7.0%	24,036	8.6%
2012	312,050	19,446	6.2%	25,628	8.2%
2013	327,777	18,853	5.8%	26,490	8.1%
2014	342,119	20,989	6.1%	18,734	5.5%
2015	360,133	27,273	7.6%	13,573	3.8%
2016	364,655	29,099	8.0%	11,182	3.1%

Figure 5: Outcomes of outpatient appointments at public outpatient surgical clinics at metropolitan tertiary hospitals





This document can be made available
in alternative formats on request for
a person with a disability.