



2026 BASIC PHYSICIAN TRAINING (ADULT) SELECTION TO TRAINING



Eligibility: Applicants must have 2+ years of postgraduate clinical experience in Australia (or equivalent).



Employment: To apply for BPT with East, North and South Network, first secure an RMO/SMR position at the preferred network hospital. To apply for WA Rural Physician Training Pathway, candidates are just required to apply to a RMO or SMR pool at an accredited WACHS site.



Continuing Trainees: Shorter application process for continuing trainees within the same network. More information will be sent to current trainees via email.



Equity Consideration: Additional marks awarded to applicants who identify as Aboriginal or Torres Strait Islander.

APPLICATIONS OPEN

1 SEPTEMBER 2025

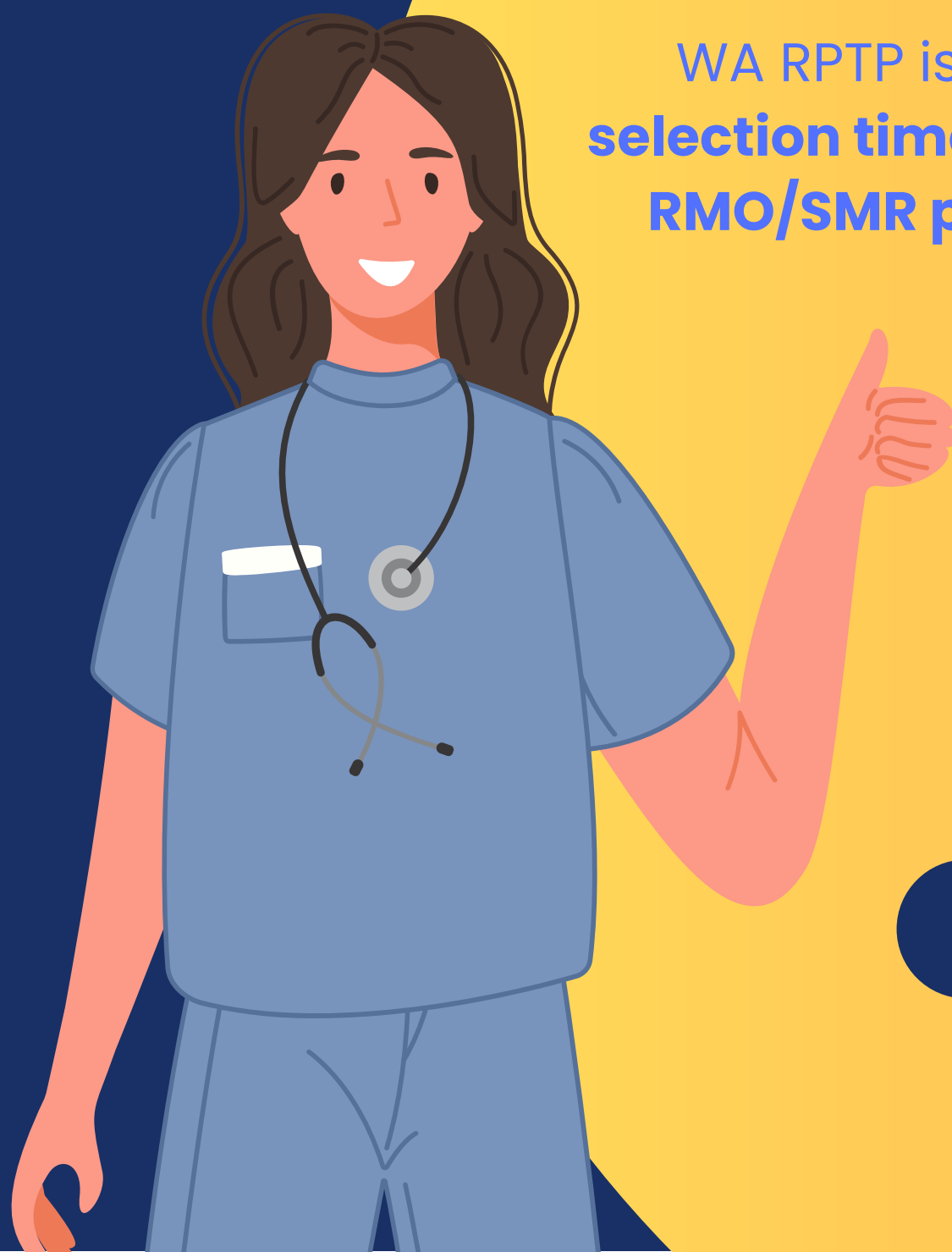
INTERVIEW DATE

24 OCTOBER 2025

MORE
INFORMATION



SCAN OR CLICK



WACHS BPT!

In **2026**, WACHS-employed doctors can access the **WA Rural Physician Training Pathway (WA RPTP)** which enables WACHS BPTs to **remain and train at accredited WACHS sites for up to 24 months** on the Pathway.

WA RPTP is a **separate pathway** with an **earlier selection timeline**. Trainees only need to **apply for an RMO/SMR position at an accredited WACHS site**.

ACCREDITED WACHS SITES:

- Albany Health Campus
- Broome Health Campus
- Geraldton Regional Hospital
- Kalgoorlie Health Campus
- Bunbury Regional Hospital

APPLICATIONS OPEN

23 JUNE 2025