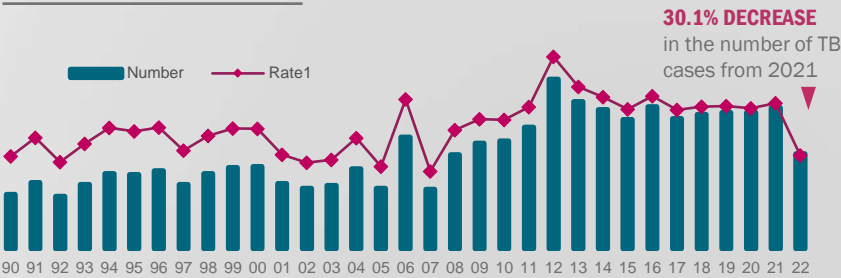


TUBERCULOSIS

WESTERN AUSTRALIA, 2022

In 2022, there were 100 TB cases notified in Western Australia at the rate of 3.6 cases per 100,000 population. This represented a 30.1% decrease from the numbers notified in 2021 and was the lowest number of TB notifications in a year since 2008.

WA NUMBERS AND RATES



100

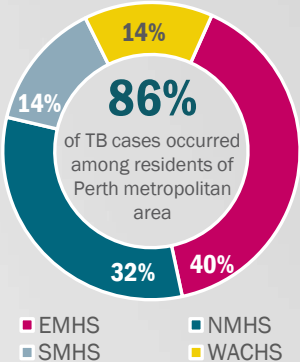
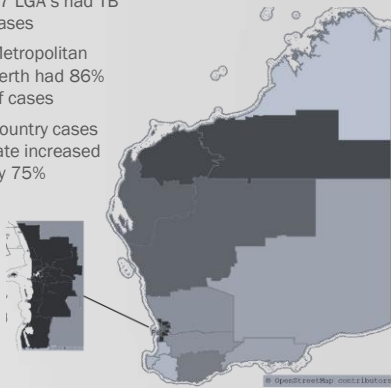
Number of TB cases notified in WA in 2022

3.6

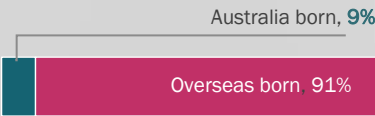
WA TB rate per 100,000 population

TB IN WA REGIONS

- 27 LGA's had TB cases
- Metropolitan Perth had 86% of cases
- Country cases rate increased by 75%



COUNTRY OF BIRTH



26

Number of countries of birth represented among patients with TB disease

DRUG RESISTANCE

14

Number of patients who had drug resistant TB

2

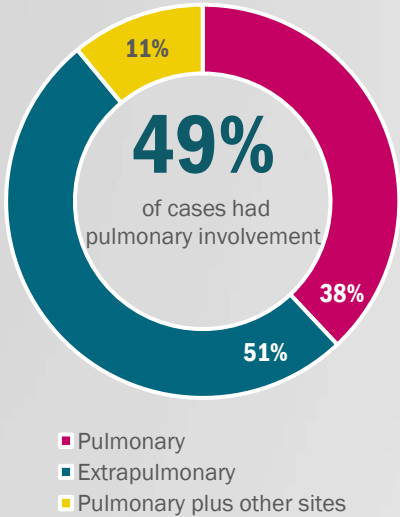
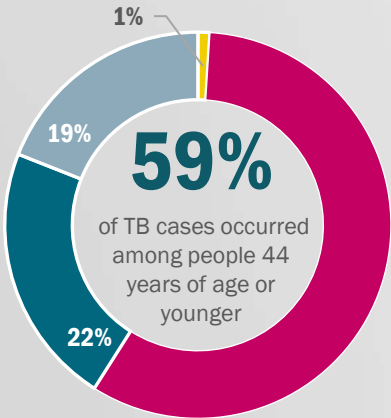
Number of patients who had multidrug resistant TB (MDR-TB)¹

¹ defined as resistance to at least isoniazid and rifampicin



CLINICAL CHARACTERISTICS

Female 53% Male 47%



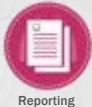
TREATMENT OUTCOME 2021

95%

of all patients with TB disease in 2021 completed treatment

WESTERN AUSTRALIA TUBERCULOSIS CONTROL PROGRAM

The WA TB Control Program (WATBCP) located at the Anita Clayton Centre offers a specialised public health service that provides a state-wide outpatient service for the treatment, surveillance and prevention of tuberculosis. The WATBCP provides Specialist Medical advice to all cases of Active TB and Latent TB infection. There is a dedicated paediatric clinic to ensure the needs of children and their families are met. Individual case management for all clients is a nurse led approach that is an integral part of the success of the WATBCP



Reporting



Clinical Care



Treatment



Tele-health



Testing



Case Management



Contact Tracing



Outbreak Investigation



Education