



Outpatient Quarterly Activity Western Australian Metropolitan Hospitals March 2012 Quarter

Date issued: 27 April 2012

© Department of Health, Western Australia

This work is copyright. Apart from any use as permitted under the *Copyright Act 1968*, no part may be reproduced without prior written permission from the Department of Health, Western Australia.

Requests and enquiries concerning reproduction and rights should be directed to -

Performance Reporting Branch
Performance Activity & Quality Division
Department of Health, Western Australia
PO Box 8172 Perth Business Centre
Western Australia 6849

A list of the Department's publications concerning outpatient activity is available from -
www.health.wa.gov.au/ElectiveSurgery/waitinglist/

ISSN 1836-9677 (print)

Suggested citation

Department of Health, Western Australia.
Outpatient Quarterly Activity, WA Metropolitan Hospitals: March 2012 Quarter.
Perth: Performance Reporting Branch, Performance Activity & Quality Division
Department of Health, 2012.

Report produced by
Performance Reporting Branch, Performance Activity & Quality Division,
Department of Health

Copies of this publication available at:

www.health.wa.gov.au/ElectiveSurgery/waitinglist/

Table of Contents

Key points	i
List of tables.....	ii
List of figures	ii
Abbreviations.....	iii
Glossary	iii
Symbols.....	iii
Introduction	1
1. Appointments	1
1.1 All appointments.....	1
1.2 First appointments	1
1.3 New appointments	2
1.4 Did not attend	3
1.5 Total appointments.....	3
2. Waiting times.....	3
3. Specialty	5
4. Metropolitan hospitals	5
Appendix tables	7
Notes	A-52

Key Points

March 2009 quarter to March 2012 quarter

All appointments

Quarterly all (ie new and follow up) appointments at all metropolitan teaching hospitals increased by 23,180 (16.4%) from 141,627 to 164,807

New appointments

Quarterly new appointments at all metropolitan teaching hospitals increased by 2,041 (6.0%) from 33,973 to 36,014

First appointments

At all metropolitan teaching hospitals:

- quarterly first appointments increased by 2,490 (7.7%) from 32,452 to 34,942
- median waiting times increased from 0.99 to 1.08 months

Total appointments

Quarterly total (ie new, follow up and DNA) appointments at all metropolitan teaching hospitals increased by 25,943 (15.7%) from 165,376 to 191,319

Did not attend appointments

At all metropolitan teaching hospitals:

- quarterly did not attend (DNA) appointments increased by 2,763 (11.6%) from 23,749 to 26,512
- DNA appointments, as a proportion of total appointments, decreased from 14.4% to 13.9%

List of Tables

Table 1:	Counts of new, follow up and did not attend outpatient appointments at all metropolitan teaching hospitals, March 2007 quarter - March 2012 quarter	2
Table 2:	Counts & waiting times for first time outpatient appointments at all metropolitan teaching hospitals, March 2007 quarter - March 2012 quarter	3
Table 3:	Outpatient appointments at metropolitan non teaching hospitals, matched & non-matched specialties, March 2007 quarter - March 2012 quarter	5
Table 4:	Outpatient appointments at all metropolitan hospitals, matched specialties, March 2007 quarter - March 2012 quarter	6

List of Figures

Figure 1:	First time outpatient appointments & waiting times (months) at all metropolitan teaching hospitals, March 2007 quarter - March 2012 quarter	1
Figure 2:	All appointments & proportion (%) of new outpatient appointments at all metropolitan teaching hospitals, March 2007 quarter - March 2012 quarter	4
Figure 3:	Total appointments & proportion (%) of DNA outpatient appointments at all metropolitan teaching hospitals, March 2007 quarter - March 2012 quarter	4

Abbreviations

AHS	Area Health Service
AIHW	Australian Institute of Health and Welfare
CAHS	Child and Adolescent Health Service
DNA	did not attend
ESWL	Elective surgery wait list
FH	Fremantle Hospital
JHC	Joondalup Health Campus
KEMH	King Edward Memorial Hospital
NA	not available
NAPAAWL DC	Non-admitted patient activity & wait list data collection
NMAHS	North Metropolitan Area Health Service Includes: <i>Kalamunda Hospital, King Edward Memorial Hospital, Osborne Park Hospital, Sir Charles Gairdner Hospital and Swan District Hospital.</i>
PHC	Peel Health Campus
PMH	Princess Margaret Hospital for Children
qtr	quarter
RPH	Royal Perth Hospital
RPRH	Royal Perth Rehabilitation Hospital
RPH SPC	Royal Perth Hospital Shenton Park Campus (also known as Royal Perth Rehabilitation Hospital)
SCGH	Sir Charles Gairdner Hospital
SMAHS	South Metropolitan Area Health Service Includes: <i>Armada-Kelmscott Memorial Hospital, Bentley Hospital, Fremantle Hospital, Kaleeya Hospital, Rockingham General Hospital, Royal Perth Hospital and Royal Perth Rehabilitation Hospital.</i>
TOPAS	The Open Patient Administration System
WA	Western Australia
WACHS	Western Australian Country Health Service

Includes: *South West, Great Southern, Wheatbelt, Goldfields, Midwest, Pilbara and Kimberley Health Regions.*

WLDC Wait List Data Collection

Glossary

Mean: This refers to the arithmetic mean, being the sum of all values in the list divided by the number of items in the list. The mean is the most commonly used type of average and can also be referred to simply as the average.

Median: This refers to the value separating the higher half of a sample, a population, or a probability distribution, from the lower half. This statistic is used, in preference to the mean, when the distribution of the values is skewed by a small number of very high values.

90th percentile: This refers to the value in the list below which there are 90 percent of numbers and enables waiting times to be expressed as a percentile rank.

However, as percentile ranks are not on equal interval scales, the difference between any two scores is not the same as between any other two scores.

For instance, the difference (25) between 90 and 65 is not the same as the difference (25) between 50 and 25 because position rank of a percentile is based on an assumed normal distribution of all values.

Symbols

- nil
* data suppressed to protect confidentiality

Introduction

The purpose of this report is to provide summary quarterly data about attendances at outpatient clinics operating at metropolitan teaching hospitals, including Royal Perth Hospital (RPH), Royal Perth Rehabilitation Hospital (RPRH), Sir Charles Gairdner Hospital (SCGH), Fremantle Hospital (FH), King Edward Memorial Hospital (KEMH) and Princess Margaret Hospital (PMH).

In addition to activity at metropolitan teaching hospitals, which accounts for the greatest proportion of outpatient clinics, information is also presented for outpatient clinics at metropolitan non teaching hospitals based on matched and non matched specialties.

1. Appointments

1.1 All appointments

Up to present quarter

Table 1 (page 2) indicates that all (ie, new and follow up) appointments increased by 38,167 (30.1%) from the March 2007 quarter (126,640) to the current quarter (164,807).

Over last three years

Table 1 (page 2) shows that compared with the same quarter three years ago, all appointments increased by 23,180 (16.4%) from the March

2009 quarter (141,627) to the current quarter (164,807).

Trends by hospital

Trends in new and follow up appointments for each metropolitan teaching hospital are contained in Tables A-1 to A-6 (pages A-1 to A-6).

1.2 First appointments

Due to differences in definition, as stated in the Notes (page A-52), separate counts of first appointments are provided in Table 2 (page 3).

First appointments refer to patients who have not previously attended an outpatient clinic, whereas new appointments may include multiple counts for a patient related to attendance at an outpatient clinic.

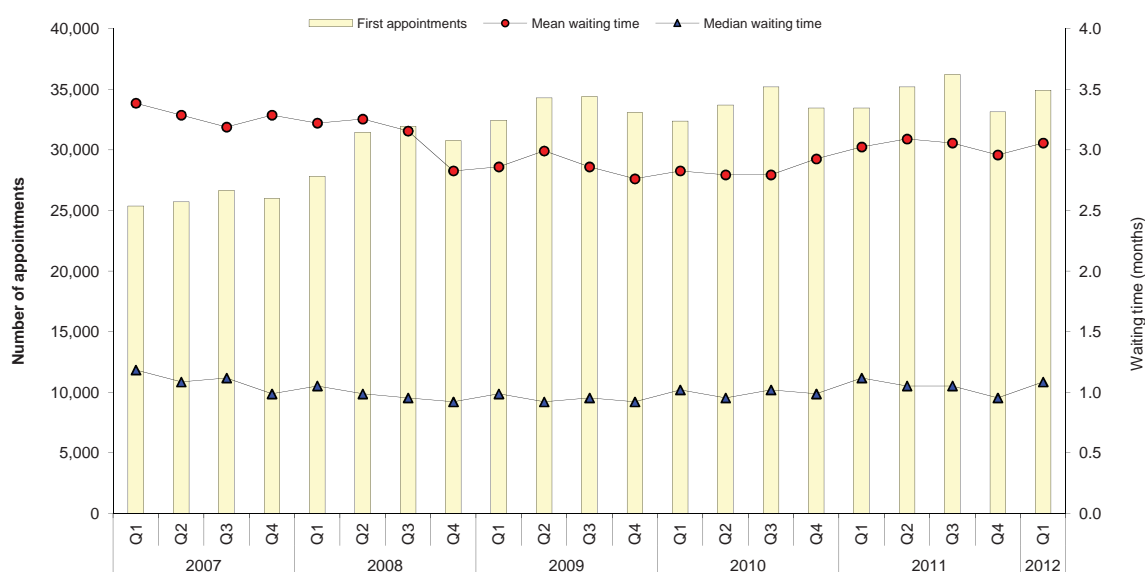
Up to present quarter

Table 2 (page 3) indicates that first appointments increased by 9,572 (37.7%) from the March 2007 quarter (25,370) to the current quarter (34,942).

Over last three years

Table 2 (page 3) shows that compared with the same quarter three years ago, first appointments increased by 2,490 (7.7%) from the March 2009 quarter (32,452) to the current quarter (34,942).

Figure 1: First time outpatient appointments & waiting time (months) at all metropolitan teaching hospitals, March 2007 quarter - March 2012 quarter



Trends by hospital

Trends in first appointments for each metropolitan teaching hospital are contained in Tables A-7 to A-9 (pages A-7 to A-9).

1.3 New appointments

Up to present quarter

Table 1 (page 2) indicates that new appointments increased by 10,206 (39.5%) from the March 2007 quarter (25,808) to the current quarter (36,014).

It can also be seen that the proportion of new appointments increased from the March 2007 quarter (20.4%) to the current quarter (21.9%).

Over last three years

Table 1 (page 2) shows that compared with the same quarter three years ago, new appointments increased by 2,041 (6.0%) from the March 2009 quarter (33,973) to the current quarter (36,014).

Trends by hospital

Trends in new appointments for each metropolitan teaching hospital are contained in Tables A-1 to A-6 (pages A-1 to A-6).

This data indicates that proportions of new appointments were steady at RPH and SCGH for the last three years and at FH for the last two years, while at KEMH and PMH the proportion has

Table 1: Counts of new, follow up & did not attend outpatient appointments at all metropolitan teaching hospitals, March 2007 quarter - March 2012 quarter

	New		Follow up		All		Did not attend		Total
	n	% (of All)		(new & follow-up)			n	% (of Total)	(new, follow-up & DNA)
2007									
March qtr	25,808	20.4	100,832	126,640	22,241	14.9	148,881		
June qtr	26,389	20.3	103,563	129,952	22,206	14.6	152,158		
September qtr	27,540	20.6	106,248	133,788	22,337	14.3	156,125		
December qtr	27,430	21.3	101,218	128,648	21,776	14.5	150,424		
2008									
March qtr	29,380	22.4	101,537	130,917	21,652	14.2	152,569		
June qtr	33,381	23.7	107,756	141,137	23,141	14.1	164,278		
September qtr	34,053	23.7	109,392	143,445	23,882	14.3	167,327		
December qtr	32,409	23.1	107,699	140,108	23,058	14.1	163,166		
2009									
March qtr	33,973	24.0	107,654	141,627	23,749	14.4	165,376		
June qtr	36,029	24.6	110,451	146,480	24,555	14.4	171,035		
September qtr	36,220	23.9	115,198	151,418	25,371	14.4	176,789		
December qtr	34,778	23.7	111,873	146,651	23,495	13.8	170,146		
2010									
March qtr	33,914	23.6	109,598	143,512	23,735	14.2	167,247		
June qtr	35,481	23.9	112,896	148,377	24,767	14.3	173,144		
September qtr	37,148	23.7	119,776	156,924	26,281	14.3	183,205		
December qtr	35,114	23.2	116,227	151,341	25,444	14.4	176,785		
2011									
March qtr	34,476	22.6	118,320	152,796	25,858	14.5	178,654		
June qtr	36,262	22.8	122,592	158,854	27,088	14.6	185,942		
September qtr	37,313	22.1	131,202	168,515	27,816	14.2	196,331		
December qtr	34,175	21.6	123,886	158,041	25,939	14.1	183,980		
2012									
March qtr	36,014	21.9	128,793	164,807	26,512	13.9	191,319		

declined over the past two years.

1.4 Did not attend

Up to present quarter

Table 1 (page 2) indicates that did not attend (DNA) appointments increased by 4,271 (19.2%) from the March 2007 quarter (22,241) to the current quarter (26,512).

Figure 3 (page 4) presents trends in the proportion of DNA appointments and total (ie new, fol-

low up and DNA) appointments. This figure shows that, overall, the proportion of DNA appointments have remained relatively stable from the March 2007 quarter to the current quarter.

Over last three years

Table 1 (page 2) shows that compared with the same quarter three years ago, DNA appointments increased by 2,763 (11.6%) from the March 2009 quarter (23,749) to the current quarter (26,512).

Trends by hospital

Trends in DNA appointments for each metropolitan teaching hospital are contained in Tables A-1 to A-6 (pages A-1 to A-6).

This data indicates that higher proportions of DNA appointments were reported by RPH and PMH compared to the other metropolitan teaching hospitals, while at KEMH the proportion has declined over the past year.

Table 2: Counts & waiting times for first time outpatient appointments at all metropolitan teaching hospitals, March 2007 quarter - March 2012 quarter

	First appointments			
	Count n	Waiting time (months)		
		Mean	Median	90th percentile
2007				
March qtr	25,370	3.39	1.18	6.71
June qtr	25,722	3.29	1.08	6.67
September qtr	26,648	3.19	1.12	6.51
December qtr	25,988	3.29	0.99	6.41
2008				
March qtr	27,812	3.22	1.05	6.54
June qtr	31,439	3.25	0.99	6.90
September qtr	31,934	3.16	0.95	6.67
December qtr	30,753	2.83	0.92	5.98
2009				
March qtr	32,452	2.86	0.99	6.18
June qtr	34,298	2.99	0.92	6.28
September qtr	34,392	2.86	0.95	6.05
December qtr	33,076	2.76	0.92	5.98
2010				
March qtr	32,392	2.83	1.02	6.05
June qtr	33,699	2.79	0.95	6.08
September qtr	35,212	2.79	1.02	6.31
December qtr	33,469	2.93	0.99	6.38
2011				
March qtr	33,468	3.02	1.12	6.97
June qtr	35,209	3.09	1.05	7.13
September qtr	36,215	3.06	1.05	7.33
December qtr	33,142	2.96	0.95	7.17
2012				
March qtr	34,942	3.06	1.08	7.04

1.5 Total appointments

Up to present quarter

Table 1 (page 2) indicates that total (ie new, follow up and DNA) appointments increased by 42,438 (28.5%) from the March 2007 quarter (148,881) to the current quarter (191,319).

Over last three years

Table 1 (page 2) also shows that compared with the same quarter three years ago, total appointments increased by 25,943 (15.7%) from the March 2009 quarter (165,376) to the current quarter (191,319). See also Figure 3 (page 4).

Trends by hospital

Trends in total appointments for each metropolitan teaching hospital are contained in Tables A-1 to A-6 (pages A-1 to A-6).

2. Waiting Times

Up to present quarter

Mean, median and 90th percentile waiting time in months to first appointment and counts of first appointments at all metropolitan teaching hospitals are presented in Table 2 (page 3).

Table 2 shows that, overall, median waiting time decreased from the March 2007 quarter (1.18 months) to the current quarter (1.08 months).

Figure 2: All appointments & proportion (%) of new outpatient appointments at all metropolitan teaching hospitals, March 2007 quarter - March 2012 quarter

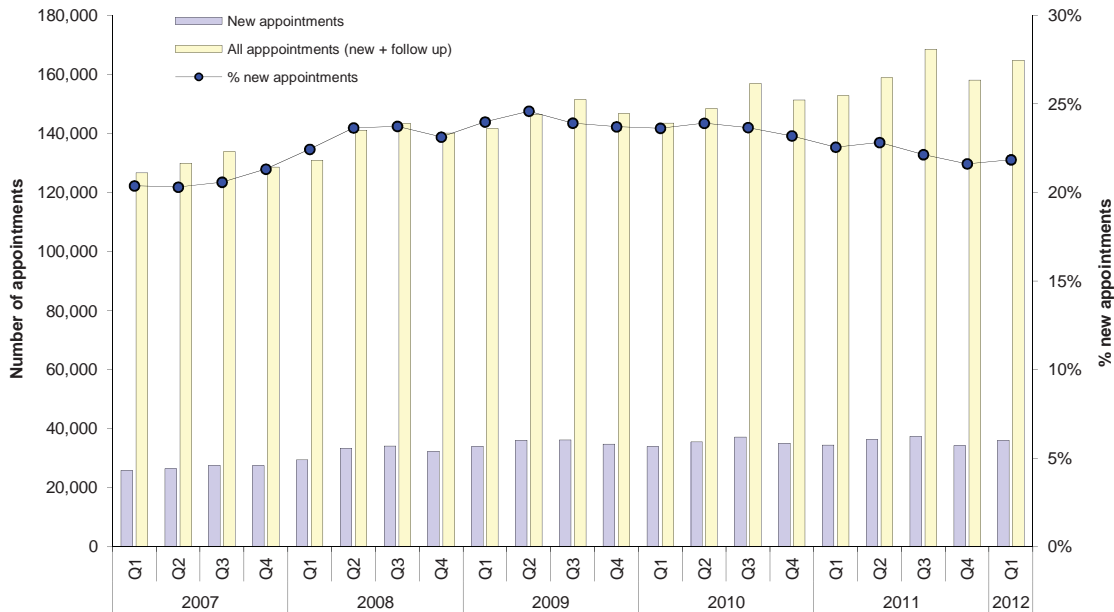
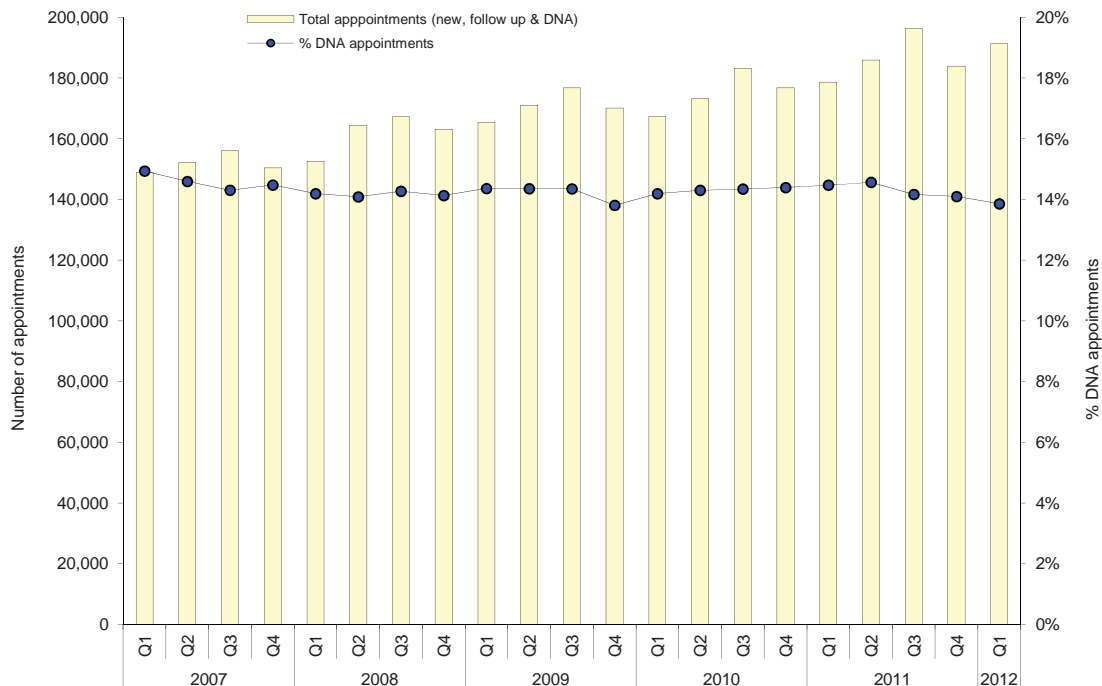


Figure 3: Total appointments & proportion (%) of DNA outpatient appointments at all metropolitan teaching hospitals, March 2007 quarter- March 2012 quarter



Over last three years

Table 2 (page 3) shows that compared with the same quarter three years ago, median waiting times have increased from 0.99 to 1.08 months. See also Figure 1 (page 1).

Trends by hospital

Trends in mean, median and 90th percentile waiting time (months) and counts of first appointments for each metropolitan teaching hospital are contained in Tables A-7 to A-9 (pages A-7 to A-9).

It should be noted that variations between hospitals in waiting times are related to demographic, casemix and other factors.

3. Specialty

A quarterly detailed breakdown of new appoint-

ments by specialty at all metropolitan teaching hospitals, as well as for each hospital, is contained in Tables A-10 to A-30 (pages A-10 to A-51).

4. Metro Hospitals

The inclusion of outpatient clinic data from non teaching hospitals involves grouping the descriptions of appointments into specialties and matching them with teaching hospital specialties.

Separation of matched from non matched outpatient appointments at non teaching hospitals ensures comparable data at the "all metropolitan hospital" level.

Table 3 provides a summary of quarterly outpatient appointments at metropolitan non teaching hospitals, broken down by matched and non matched specialties.

Table 3: Outpatient appointments at metropolitan non teaching hospitals, matched & non-matched specialties, March 2007 quarter - March 2012 quarter

	Non matched specialties		Matched specialties		Total specialties	
	New	All	New	All	New	All
2007						
March qtr	2,920	8,440	3,581	9,272	6,501	17,712
June qtr	2,965	8,161	4,038	9,890	7,003	18,051
September qtr	3,615	8,937	4,622	10,782	8,237	19,719
December qtr	3,546	8,805	5,128	11,433	8,674	20,238
2008						
March qtr	3,336	9,121	4,973	11,732	8,309	20,853
June qtr	3,528	9,585	5,801	12,608	9,329	22,193
September qtr	3,653	10,496	5,778	12,706	9,431	23,202
December qtr	3,536	10,332	5,693	12,754	9,229	23,086
2009						
March qtr	4,437	11,664	5,617	12,599	10,054	24,263
June qtr	5,344	12,883	5,533	13,313	10,877	26,196
September qtr	5,169	12,729	6,124	13,871	11,293	26,600
December qtr	5,338	12,757	5,875	14,114	11,213	26,871
2010						
March qtr	5,745	13,547	5,528	14,139	11,273	27,686
June qtr	5,841	15,061	6,483	15,127	12,324	30,188
September qtr	6,986	20,750	6,746	15,548	13,732	36,298
December qtr	7,112	21,353	6,950	15,866	14,062	37,219
2011						
March qtr	8,695	23,896	8,047	17,807	16,742	41,703
June qtr	10,455	27,277	8,126	18,570	18,581	45,847
September qtr	11,532	29,742	7,998	19,905	19,530	49,647
December qtr	11,281	28,940	7,233	20,011	18,514	48,951
2012						
March qtr	11,480	30,606	7,736	20,882	19,216	51,488

Table 4 (page 6) provides a summary of quarterly outpatient appointments based on matched specialties at metropolitan teaching and non teaching hospitals.

Teaching & non teaching hospitals

Total matched new appointments at metropolitan teaching and non teaching hospitals increased by 14,361 (48.9%) from the March 2007 quarter (29,389) to the current quarter (43,750).

Total matched all appointments at metropolitan teaching and non teaching hospitals increased

by 49,777 (36.6%) from the March 2007 quarter (135,912) to the current quarter (185,689). See Table 4 (page 6).

Non teaching hospitals

Matched new appointments at metropolitan non teaching hospitals increased by 4,155 (116.0%) from the March 2007 quarter (3,581) to the current quarter (7,736). See Table 4.

Matched all appointments at metropolitan non teaching hospitals increased by 11,610 (125.2%) from the March 2007 quarter (9,272) to the current quarter (20,882). See Table 4.

Table 4: Outpatient appointments at all metropolitan hospitals, matched specialties, March 2007 quarter - March 2012 quarter

	Non teaching hospitals		Teaching hospitals		All hospitals	
	New	All	New	All	New	All
2007						
March qtr	3,581	9,272	25,808	126,640	29,389	135,912
June qtr	4,038	9,890	26,392	129,952	30,427	139,842
September qtr	4,622	10,782	27,540	133,788	32,162	144,570
December qtr	5,128	11,433	27,430	128,648	32,558	140,081
2008						
March qtr	4,973	11,732	29,380	130,917	34,353	142,649
June qtr	5,801	12,608	33,381	141,137	39,182	153,745
September qtr	5,778	12,706	34,053	143,445	39,831	156,151
December qtr	5,693	12,754	32,409	140,108	38,102	152,862
2009						
March qtr	5,617	12,599	33,973	141,626	39,590	154,226
June qtr	5,533	13,313	36,029	146,480	41,562	159,793
September qtr	6,124	13,871	36,220	151,418	42,344	165,289
December qtr	5,875	14,114	34,778	146,651	40,653	160,765
2010						
March qtr	5,528	14,139	33,914	143,512	39,442	157,651
June qtr	6,483	15,127	35,481	148,377	41,964	163,504
September qtr	6,746	15,548	37,148	156,924	43,894	172,472
December qtr	6,950	15,866	35,114	151,341	42,064	167,207
2011						
March qtr	8,047	17,807	34,476	152,796	42,523	170,603
June qtr	8,126	18,570	36,262	158,854	44,388	177,424
September qtr	7,998	19,905	37,313	168,515	45,311	188,420
December qtr	7,233	20,011	34,175	158,041	41,408	178,052
2012						
March qtr	7,736	20,882	36,014	164,807	43,750	185,689

Appendix Tables

Table A-1:	Counts of new, follow up & did not attend outpatient appointments at Royal Perth Hospital, March 2007 quarter - March 2012 quarter	A-1
Table A-2:	Counts of new, follow up & did not attend outpatient appointments at Royal Perth Rehabilitation Hospital, March 2007 quarter - March 2012 quarter	A-2
Table A-3:	Counts of new, follow up & did not attend outpatient appointments at Sir Charles Gairdner Hospital, March 2007 quarter - March 2012 quarter	A-3
Table A-4:	Counts of new, follow up & did not attend outpatient appointments at Fremantle Hospital, March 2007 quarter - March 2012 quarter.....	A-4
Table A-5:	Counts of new, follow up & did not attend outpatient appointments at King Edward Memorial Hospital, March 2007 quarter - March 2012 quarter	A-5
Table A-6:	Counts of new, follow up & did not attend outpatient appointments at Princess Margaret Hospital, March 2007 quarter - March 2012 quarter.....	A-6
Table A-7:	Waiting times of first time outpatient appointments at RPH & RPRH, March 2007 quarter - March 2012 quarter	A-7
Table A-8:	Waiting times of first time outpatient appointments at SCGH & FH, March 2007 quarter - March 2012 quarter	A-8
Table A-9:	Waiting times of first time outpatient appointments at KEMH & PMH, March 2007 quarter - March 2012 quarter	A-9
Table A-10:	Quarterly new outpatient appointments by specialty, metropolitan summary, March 2007 quarter - December 2008 quarter	A-10
Table A-11:	Quarterly new outpatient appointments by specialty, metropolitan summary, March 2009 quarter - December 2010 quarter	A-12
Table A-12:	Quarterly new outpatient appointments by specialty, metropolitan summary, March 2011 quarter - March 2012 quarter	A-14
Table A-13:	Quarterly new outpatient appointments by specialty, Royal Perth Hospital, March 2007 quarter - December 2008 quarter	A-16
Table A-14:	Quarterly new outpatient appointments by specialty, Royal Perth Hospital, March 2009 quarter - December 2010 quarter	A-18
Table A-15:	Quarterly new outpatient appointments by specialty, Royal Perth Hospital, March 2011 quarter - March 2012 quarter	A-20
Table A-16:	Quarterly new outpatient appointments by specialty, Royal Perth Rehabilitation Hospital, March 2007 quarter - December 2008 quarter	A-22
Table A-17:	Quarterly new outpatient appointments by specialty, Royal Perth Rehabilitation Hospital, March 2009 quarter - December 2010 quarter	A-24
Table A-18:	Quarterly new outpatient appointments by specialty, Royal Perth Rehabilitation Hospital, March 2011 quarter - March 2012 quarter	A-26
Table A-19:	Quarterly new outpatient appointments by specialty, Fremantle Hospital, March 2007 quarter - December 2008 quarter	A-28
Table A-20:	Quarterly new outpatient appointments by specialty, Fremantle Hospital, March 2009 quarter - December 2010 quarter	A-30
Table A-21:	Quarterly new outpatient appointments by specialty, Fremantle Hospital, March 2011 quarter - March 2012 quarter	A-32

WA Outpatient Quarterly Report, March 2012 Quarter

Table A-22: Quarterly new outpatient appointments by specialty, Sir Charles Gairdner Hospital, March 2007 quarter - December 2008 quarter	A-34
Table A-23: Quarterly new outpatient appointments by specialty, Sir Charles Gairdner Hospital, March 2009 quarter - December 2010 quarter	A-36
Table A-24: Quarterly new outpatient appointments by specialty, Sir Charles Gairdner Hospital, March 2011 quarter - March 2012 quarter	A-38
Table A-25: Quarterly new outpatient appointments by specialty, Princess Margaret Hospital, March 2007 quarter - December 2008 quarter	A-40
Table A-26: Quarterly new outpatient appointments by specialty, Princess Margaret Hospital, March 2009 quarter - December 2010 quarter	A-42
Table A-27: Quarterly new outpatient appointments by specialty, Princess Margaret Hospital, March 2011 quarter - March 2012 quarter	A-44
Table A-28: Quarterly new outpatient appointments by specialty, King Edward Memorial Hospital, March 2007 quarter - December 2008 quarter	A-46
Table A-29: Quarterly new outpatient appointments by specialty, King Edward Memorial Hospital, March 2009 quarter - December 2010 quarter	A-48
Table A-30: Quarterly new outpatient appointments by specialty, King Edward Memorial Hospital, March 2011 quarter - March 2012 quarter	A-50

WA Outpatient Quarterly Report, March 2012 Quarter

Table A-1: Counts of new, follow up & did not attend outpatient appointments at Royal Perth Hospital, March 2007 quarter - March 2012 quarter

	New		Follow up	All	Did not attend		Total
	n	% (of All)		(new & follow-up)	n	% (of Total)	(new, follow-up & DNA)
2007							
March qtr	7,477	19.0	31,799	39,276	8,045	17.0	47,321
June qtr	7,628	19.5	31,566	39,194	8,077	17.1	47,271
September qtr	7,930	19.3	33,258	41,188	8,269	16.7	49,457
December qtr	7,596	19.1	32,099	39,695	7,627	16.1	47,322
2008							
March qtr	8,036	19.8	32,626	40,662	7,899	16.3	48,561
June qtr	8,512	20.2	33,640	42,152	7,763	15.6	49,915
September qtr	8,676	20.1	34,431	43,107	8,082	15.8	51,189
December qtr	8,361	19.6	34,314	42,675	7,735	15.3	50,410
2009							
March qtr	8,488	19.5	35,024	43,512	8,108	15.7	51,620
June qtr	8,576	19.5	35,311	43,887	7,965	15.4	51,852
September qtr	8,814	19.5	36,467	45,281	7,986	15.0	53,267
December qtr	8,578	19.4	35,703	44,281	7,566	14.6	51,847
2010							
March qtr	8,653	19.8	34,998	43,651	8,029	15.5	51,680
June qtr	8,459	19.2	35,536	43,995	7,947	15.3	51,942
September qtr	8,499	18.3	38,056	46,555	8,676	15.7	55,231
December qtr	8,156	18.3	36,527	44,683	8,253	15.6	52,936
2011							
March qtr	8,330	18.6	36,425	44,755	8,694	16.3	53,449
June qtr	8,897	19.1	37,750	46,647	9,135	16.4	55,782
September qtr	9,578	19.9	38,634	48,212	9,073	15.8	57,285
December qtr	8,343	18.4	36,940	45,283	9,058	16.7	54,341
2012							
March qtr	9,025	19.2	37,966	46,991	9,316	16.5	56,307

WA Outpatient Quarterly Report, March 2012 Quarter

Table A-2: Counts of new, follow up & did not attend outpatient appointments at Royal Perth Rehabilitation Hospital, March 2007 quarter - March 2012 quarter

	New		Follow up		All		Did not attend		Total
	n	% (of All)		(new & follow-up)			n	% (of Total)	(new, follow-up & DNA)
2007									
March qtr	1,498	28.2	3,807	5,305	707	11.8	6,012		
June qtr	1,583	29.0	3,874	5,457	794	12.7	6,251		
September qtr	1,609	29.9	3,769	5,378	718	11.8	6,096		
December qtr	1,494	28.8	3,697	5,191	763	12.8	5,954		
2008									
March qtr	1,521	29.0	3,725	5,246	616	10.5	5,862		
June qtr	1,696	31.3	3,717	5,413	656	10.8	6,069		
September qtr	1,502	30.3	3,453	4,955	669	11.9	5,624		
December qtr	1,478	29.7	3,503	4,981	711	12.5	5,692		
2009									
March qtr	1,497	28.9	3,678	5,175	714	12.1	5,889		
June qtr	1,677	32.3	3,522	5,199	714	12.1	5,913		
September qtr	1,678	32.6	3,462	5,140	707	12.1	5,847		
December qtr	1,460	30.9	3,263	4,723	667	12.4	5,390		
2010									
March qtr	1,378	31.1	3,055	4,433	566	11.3	4,999		
June qtr	1,485	31.6	3,216	4,701	693	12.8	5,394		
September qtr	1,701	34.0	3,305	5,006	756	13.1	5,762		
December qtr	1,502	31.3	3,301	4,803	679	12.4	5,482		
2011									
March qtr	1,509	32.3	3,161	4,670	667	12.5	5,337		
June qtr	1,669	34.4	3,176	4,845	771	13.7	5,616		
September qtr	1,976	36.1	3,503	5,479	916	14.3	6,395		
December qtr	1,808	35.3	3,319	5,127	802	13.5	5,929		
2012									
March qtr	1,796	35.7	3,235	5,031	773	13.3	5,804		

WA Outpatient Quarterly Report, March 2012 Quarter

Table A-3: Counts of new, follow up & did not attend outpatient appointments at Sir Charles Gairdner Hospital, March 2007 quarter - March 2012

	New		Follow up		Did not attend		Total
	n	% (of All)		(new & follow-up)	n	% (of Total)	
2007							
March qtr	5,675	18.4	25,085	30,760	4,437	12.6	35,197
June qtr	5,646	17.6	26,484	32,130	4,680	12.7	36,810
September qtr	6,273	18.8	27,161	33,434	4,443	11.7	37,877
December qtr	6,654	21.0	25,054	31,708	4,412	12.2	36,120
2008							
March qtr	6,231	20.3	24,391	30,622	3,964	11.5	34,586
June qtr	7,461	21.1	27,853	35,314	4,909	12.2	40,223
September qtr	7,197	20.3	28,236	35,433	5,037	12.4	40,470
December qtr	6,348	18.4	28,227	34,575	4,758	12.1	39,333
2009							
March qtr	6,351	19.2	26,792	33,143	4,528	12.0	37,671
June qtr	7,306	20.5	28,268	35,574	4,858	12.0	40,432
September qtr	7,816	20.6	30,204	38,020	5,190	12.0	43,210
December qtr	7,808	21.0	29,400	37,208	4,823	11.5	42,031
2010							
March qtr	7,410	20.8	28,152	35,562	4,805	11.9	40,367
June qtr	7,706	20.6	29,698	37,404	5,390	12.6	42,794
September qtr	8,231	20.6	31,773	40,004	5,681	12.4	45,685
December qtr	8,001	20.3	31,376	39,377	5,455	12.2	44,832
2011							
March qtr	8,266	20.6	31,785	40,051	5,745	12.5	45,796
June qtr	8,397	20.9	31,874	40,271	5,708	12.4	45,979
September qtr	8,986	21.5	32,889	41,875	5,943	12.4	47,818
December qtr	8,351	20.9	31,697	40,048	5,609	12.3	45,657
2012							
March qtr	8,444	20.9	32,038	40,482	6,006	12.9	46,488

WA Outpatient Quarterly Report, March 2012 Quarter

Table A-4: Counts of new, follow up & did not attend outpatient appointments at Fremantle Hospital, March 2007 quarter - March 2012

	New		Follow up	All	Did not attend		Total
	n	% (of All)		(new & follow-up)	n	% (of Total)	(new, follow-up & DNA)
2007							
March qtr	5,136	23.7	16,576	21,712	3,448	13.7	25,160
June qtr	5,380	23.6	17,406	22,786	3,542	13.5	26,328
September qtr	5,402	22.9	18,230	23,632	3,750	13.7	27,382
December qtr	4,981	21.5	18,204	23,185	3,514	13.2	26,699
2008							
March qtr	6,673	26.7	18,364	25,037	3,694	12.9	28,731
June qtr	7,787	28.9	19,180	26,967	4,030	13.0	30,997
September qtr	8,149	29.7	19,328	27,477	4,195	13.2	31,672
December qtr	8,242	30.2	19,026	27,268	3,909	12.5	31,177
2009							
March qtr	8,835	30.9	19,798	28,633	3,989	12.2	32,622
June qtr	8,635	29.4	20,734	29,369	4,432	13.1	33,801
September qtr	8,201	28.4	20,678	28,879	4,525	13.5	33,404
December qtr	7,695	27.3	20,491	28,186	4,076	12.6	32,262
2010							
March qtr	7,459	27.0	20,148	27,607	3,883	12.3	31,490
June qtr	8,378	28.7	20,857	29,235	4,471	13.3	33,706
September qtr	8,693	28.6	21,722	30,415	4,545	13.0	34,960
December qtr	8,668	28.9	21,301	29,969	4,611	13.3	34,580
2011							
March qtr	8,404	28.5	21,080	29,484	4,428	13.1	33,912
June qtr	8,693	28.7	21,642	30,335	4,773	13.6	35,108
September qtr	8,615	27.5	22,748	31,363	4,836	13.3	36,189
December qtr	7,800	27.3	20,725	28,525	4,149	12.7	32,674
2012							
March qtr	8,101	26.8	22,085	30,186	4,266	12.4	30,186

WA Outpatient Quarterly Report, March 2012 Quarter

Table A-5: Counts of new, follow up & did not attend outpatient appointments at King Edward Memorial Hospital, March 2007 quarter - March 2012

	New		Follow up	All (new & follow-up)	Did not attend		Total (new, follow-up & DNA)
	n	% (of All)			n	% (of Total)	
2007							
March qtr	3,287	29.3	7,934	11,221	2,410	17.7	13,631
June qtr	3,223	29.3	7,761	10,984	2,209	16.7	13,193
September qtr	3,288	29.9	7,697	10,985	2,240	16.9	13,225
December qtr	3,380	30.5	7,718	11,098	2,244	16.8	13,342
2008							
March qtr	3,300	29.7	7,821	11,121	2,211	16.6	13,332
June qtr	3,396	29.7	8,057	11,453	2,143	15.8	13,596
September qtr	3,529	30.5	8,053	11,582	2,069	15.2	13,651
December qtr	3,312	30.2	7,647	10,959	2,163	16.5	13,122
2009							
March qtr	3,889	34.3	7,445	11,334	1,865	14.1	13,199
June qtr	4,051	35.3	7,429	11,480	1,957	14.6	13,437
September qtr	4,036	32.2	8,493	12,529	2,250	15.2	14,779
December qtr	3,910	32.6	8,075	11,985	2,177	15.4	14,162
2010							
March qtr	3,689	32.2	7,760	11,449	1,981	14.8	13,430
June qtr	3,509	30.5	8,011	11,520	2,004	14.8	13,524
September qtr	3,799	31.0	8,464	12,263	2,089	14.6	14,352
December qtr	3,299	29.3	7,975	11,274	2,098	15.7	13,372
2011							
March qtr	3,245	28.9	7,996	11,241	2,013	15.2	13,254
June qtr	3,337	26.7	9,156	12,493	1,921	13.3	14,414
September qtr	3,218	20.8	12,257	15,475	2,040	11.6	17,515
December qtr	3,089	21.1	11,540	14,629	1,758	10.7	16,387
2012							
March qtr	3,550	21.5	12,999	16,549	1,612	8.9	18,161

WA Outpatient Quarterly Report, March 2012 Quarter

Table A-6: Counts of new, follow up & did not attend outpatient appointments at Princess Margaret Hospital, March 2007 quarter - March 2012

	New		Follow up	All (new & follow-up)	Did not attend		Total (new, follow-up & DNA)
	n	% (of All)			n	% (of Total)	
2007							
March qtr	2,735	14.9	15,631	18,366	3,194	14.8	21,560
June qtr	2,932	15.1	16,472	19,401	2,904	13.0	22,305
September qtr	3,038	15.8	16,133	19,171	2,917	13.2	22,088
December qtr	3,325	18.7	14,446	17,771	3,216	15.3	20,977
2008							
March qtr	3,619	19.9	14,610	18,229	3,268	15.2	21,497
June qtr	4,528	22.8	15,309	19,838	3,640	15.5	23,478
September qtr	5,000	23.9	15,891	20,891	3,830	15.5	24,721
December qtr	4,668	23.8	14,982	19,650	3,782	16.1	23,432
2009							
March qtr	4,913	24.8	14,917	19,830	4,545	18.6	24,375
June qtr	5,784	27.6	15,187	20,971	4,629	18.1	25,600
September qtr	5,675	26.3	15,894	21,569	4,713	17.9	26,282
December qtr	5,327	26.3	14,941	20,268	4,186	17.1	24,454
2010							
March qtr	5,323	25.6	15,485	20,810	4,471	17.7	25,281
June qtr	5,944	27.6	15,578	21,522	4,262	16.5	25,784
September qtr	6,225	27.5	16,456	22,681	4,534	16.7	27,215
December qtr	5,488	25.9	15,747	21,235	4,348	17.0	25,583
2011							
March qtr	4,722	20.9	17,873	22,695	4,311	16.0	26,906
June qtr	5,269	21.7	18,994	24,263	4,780	16.5	29,043
September qtr	4,940	18.9	21,171	26,111	5,018	16.1	31,129
December qtr	4,784	19.7	19,645	24,429	4,563	15.7	28,992
2012							
March qtr	5,089	19.9	20,470	25,568	4,539	15.1	30,107

WA Outpatient Quarterly Report, March 2012 Quarter

Table A-7: Waiting times of first time outpatient appointments at RPH & RPRH, March 2007 quarter - March 2012 quarter

	Royal Perth Hospital				Royal Perth Rehabilitation Hospital			
	First appointments	Waiting time (months)			First time appointments	Waiting time (months)		
		Mean	Median	90th percentile		Mean	Median	90th percentile
2007								
March qtr	7,302	2.86	0.66	5.10	1,483	4.47	1.41	10.78
June qtr	7,386	2.64	0.66	5.36	1,550	3.95	0.92	9.24
September qtr	7,703	2.33	0.66	5.03	1,557	2.86	0.82	7.56
December qtr	7,364	2.20	0.53	4.34	1,445	3.45	0.89	7.59
2008								
March qtr	7,837	2.24	0.62	4.77	1,449	3.58	1.28	7.92
June qtr	8,244	2.50	0.62	5.26	1,624	2.99	1.08	7.13
September qtr	8,442	2.17	0.62	4.83	1,456	2.70	0.92	6.21
December qtr	8,097	2.01	0.56	4.70	1,426	3.68	1.18	7.13
2009								
March qtr	8,246	2.27	0.66	5.29	1,414	3.42	1.08	6.41
June qtr	8,328	2.24	0.69	5.19	1,586	3.32	1.12	6.18
September qtr	8,536	2.17	0.66	4.87	1,578	4.08	1.18	7.79
December qtr	8,322	2.10	0.56	4.80	1,380	3.16	0.92	6.05
2010								
March qtr	8,379	2.10	0.66	5.03	1,278	3.16	1.02	7.46
June qtr	8,178	2.33	0.69	5.13	1,409	4.04	0.92	9.76
September qtr	8,203	2.24	0.76	5.10	1,616	3.58	0.92	6.38
December qtr	7,888	2.43	0.66	5.33	1,433	4.21	0.92	11.97
2011								
March qtr	8,065	2.66	0.76	6.35	1,423	5.00	0.92	16.27
June qtr	8,646	2.66	0.66	6.05	1,585	5.03	1.18	18.05
September qtr	9,287	2.63	0.62	5.69	1,887	4.44	1.28	14.10
December qtr	8,038	2.40	0.59	5.65	1,727	3.98	0.95	9.83
2012								
March qtr	8,704	2.60	0.69	6.28	1,704	3.52	1.25	8.22

WA Outpatient Quarterly Report, March 2012 Quarter

Table A-8: Waiting times of first time outpatient appointments at SCGH & FH, March 2007 quarter - March 2012

	Sir Charles Gairdner Hospital				Fremantle Hospital			
	First appointments	Waiting time (months)			First time appointments	Waiting time (months)		
		Mean	Median	90th percentile		Mean	Median	90th percentile
2007								
March qtr	5,515	3.39	1.02	7.79	5,080	3.58	1.12	8.91
June qtr	5,459	3.33	0.92	6.74	5,254	3.55	1.05	7.96
September qtr	5,912	3.79	0.92	8.19	5,238	3.95	1.18	9.37
December qtr	5,793	4.18	0.92	8.98	4,787	3.98	1.12	11.51
2008								
March qtr	5,352	4.18	1.15	8.94	6,349	3.39	0.99	7.59
June qtr	6,530	4.07	1.12	9.11	7,428	3.52	1.02	8.71
September qtr	6,495	4.20	1.08	9.44	7,659	3.48	1.02	8.38
December qtr	6,064	3.68	0.95	6.61	7,801	2.79	0.92	5.92
2009								
March qtr	6,117	3.29	1.15	5.98	8,480	2.93	0.95	5.85
June qtr	7,105	4.31	1.08	8.94	8,327	2.40	0.89	5.06
September qtr	7,597	3.68	0.99	8.28	7,896	2.37	0.89	4.83
December qtr	7,545	3.70	0.95	8.91	7,443	2.20	0.89	4.73
2010								
March qtr	7,166	3.78	1.12	7.69	7,242	2.43	1.05	5.19
June qtr	7,421	3.35	1.05	7.99	8,109	2.40	1.05	5.19
September qtr	7,987	3.14	0.95	8.25	8,415	2.56	1.02	5.56
December qtr	7,714	3.16	0.92	7.20	8,432	2.76	1.12	5.65
2011								
March qtr	7,991	3.12	1.12	6.97	8,186	2.63	1.18	5.52
June qtr	8,068	3.32	1.08	7.27	8,439	2.79	1.12	5.98
September qtr	8,625	3.48	1.15	7.99	8,378	2.60	1.08	6.35
December qtr	8,044	3.32	0.99	7.89	7,576	2.66	0.92	6.54
2012								
March qtr	8,128	3.45	1.05	7.59	7,931	2.73	1.08	6.28

WA Outpatient Quarterly Report, March 2012 Quarter

Table A-9: Waiting times of first time outpatient appointments at KEMH & PMH, March 2007 quarter - March 2012

	King Edward Memorial Hospital				Princess Margaret Hospital			
	First appointments	Waiting time (months)			First time appointments	Waiting time (months)		
		Mean	Median	90th percentile		Mean	Median	90th percentile
2007								
March qtr	3,267	2.47	1.68	5.85	2,723	5.03	2.60	7.46
June qtr	3,168	2.30	1.38	5.52	2,905	4.96	2.43	8.15
September qtr	3,214	2.24	1.51	5.23	3,024	4.18	2.56	7.17
December qtr	3,306	2.24	1.40	5.10	3,293	4.04	2.04	7.00
2008								
March qtr	3,235	2.37	1.55	5.46	3,590	4.34	2.47	7.33
June qtr	3,310	2.53	1.51	5.95	4,303	3.58	1.61	7.00
September qtr	3,446	2.43	1.41	5.59	4,436	3.68	1.38	7.43
December qtr	3,235	2.53	1.48	6.12	4,130	3.25	1.15	6.94
2009								
March qtr	3,799	2.40	1.15	6.25	4,396	3.52	2.01	7.66
June qtr	3,950	2.30	0.95	6.31	5,002	3.81	1.45	7.59
September qtr	3,915	2.53	1.55	6.05	4,870	3.48	1.35	7.56
December qtr	3,775	2.73	1.81	5.79	4,611	3.16	1.25	7.36
2010								
March qtr	3,616	2.60	1.74	5.72	4,711	3.32	1.41	7.69
June qtr	3,407	2.50	1.55	5.49	5,175	3.19	1.15	7.59
September qtr	3,673	2.63	1.81	5.49	5,318	3.42	1.32	8.45
December qtr	3,227	2.60	1.71	5.49	4,775	3.45	1.15	8.98
2011								
March qtr	3,192	2.76	1.64	5.95	4,611	3.78	1.55	9.76
June qtr	3,266	2.63	1.51	6.15	5,205	3.56	1.38	8.78
September qtr	3,166	2.82	1.55	6.25	4,861	3.48	1.41	9.47
December qtr	3,040	2.73	1.55	5.88	4,717	3.58	1.45	11.01
2012								
March qtr	3,456	2.66	1.58	5.56	5,019	3.85	1.61	11.90

Table A-10: Quarterly new outpatient appointments by specialty, metropolitan summary, March 2007 quarter - December 2008 quarter

	2007				2008			
	Qtr 1	Qtr 2	Qtr 3	Qtr 4	Qtr 1	Qtr 2	Qtr 3	Qtr 4
Adolescent	42	52	60	53	45	53	49	57
Amputee	30	31	28	15	17	18	20	21
Anaesthetic	1	1	0	131	1,778	1,886	1,886	2,121
Antenatal	1,957	1,984	2,035	2,041	2,103	2,023	2,130	1,996
Breast clinic	234	281	318	331	323	330	331	412
Burns	216	206	114	155	165	92	102	58
Cardiology	602	653	590	583	554	575	623	682
Cardiothoracic	112	107	114	112	122	151	131	111
Colorectal	64	78	89	81	66	93	105	105
Colposcopy	247	254	252	269	186	237	250	255
Dental	292	274	274	237	233	205	222	231
Dermatology	579	603	664	589	610	694	809	721
Developmental	82	70	87	63	54	82	107	93
Diabetic	605	617	592	684	626	651	698	711
Diabetic education	181	180	178	151	181	210	227	170
Endocrinology	230	279	285	288	245	306	291	276
Endoscopy	56	53	51	59	63	56	70	61
Ear, nose & throat	1,338	1,289	1,462	1,374	1,263	1,272	1,548	1,316
Family planning	37	48	44	39	37	47	49	41
Fertility	97	84	97	73	67	105	92	82
Gastroenterology	673	699	729	722	754	924	864	772
General medicine	478	504	561	477	487	470	446	380
General surgery	1,082	1,289	1,308	1,236	1,100	1,297	1,374	1,198
Geriatrics	183	179	222	162	200	181	194	155
Gynaecology	710	697	681	721	707	740	802	723
Haematology	430	335	381	428	382	510	459	444
Hepatology	145	136	164	128	154	176	176	151
Hyperbaric	27	35	28	38	34	33	19	27
Hypertension	22	31	75	85	80	114	82	89
Immunology	428	542	578	490	567	608	521	425
Infectious diseases	396	438	457	418	408	460	416	405
Menopause	87	64	85	78	76	90	95	101
Neurogenetic	41	37	39	28	38	39	33	32
Neurology	901	841	990	779	954	1,157	1,204	1,068
Neurosurgery	361	372	456	487	517	680	659	590
Oncology	646	569	843	1,405	1,352	1,479	1,358	754
Ophthalmology	1,340	1,459	1,763	1,451	1,663	1,948	2,053	1,975
Oral surgery	19	15	14	22	78	74	89	87
Orthopaedics	2,244	2,293	1,878	2,043	1,944	2,441	2,358	2,405
Orthopaedics - trauma	559	613	560	601	653	642	700	732
Osteoporosis	19	16	14	19	24	28	43	35

WA Outpatient Quarterly Report, March 2012 Quarter

Table A-10: Quarterly new outpatient appointments by specialty, metropolitan summary, March 2007 quarter - December 2008 quarter (continued)

	2007				2008			
	Qtr 1	Qtr 2	Qtr 3	Qtr 4	Qtr 1	Qtr 2	Qtr 3	Qtr 4
Paediatric neurology	7	6	6	8	7	11	6	5
Paediatric surgery	21	16	14	11	17	22	18	22
Paediatrics	126	142	168	146	159	178	176	190
Pain	294	306	317	603	621	806	749	819
Palliative care	31	36	33	49	53	44	46	32
Plastic dressings	923	829	901	884	781	840	857	931
Plastic surgery	1,222	1,210	1,228	1,172	1,266	1,961	2,444	2,498
Podiatry	399	368	337	360	321	479	372	297
Preadmission	1,410	1,539	1,466	1,384	1,476	1,600	1,611	1,333
Radiation oncology	233	260	271	254	245	250	241	272
Radiotherapy	453	441	490	489	439	489	482	551
Rehabilitation medicine	94	94	100	45	57	68	38	32
Renal	277	345	403	389	469	381	410	391
Respiratory medicine	356	389	451	428	412	462	482	474
Rheumatology	392	330	415	348	341	348	415	408
Scoliosis	19	33	35	58	53	58	55	39
Sexual health	366	337	342	290	413	386	349	373
Spinal	144	137	163	199	211	234	233	218
Thoracic surgery	59	92	69	94	64	104	85	103
Ulcer	75	98	61	75	61	77	74	54
Urology	709	740	711	694	619	1,009	870	895
Vascular surgery	405	333	399	304	385	397	355	404
Total	25,808	26,389	27,540	27,430	29,380	33,381	34,053	32,409

Table A-11: Quarterly new outpatient appointments by specialty, metropolitan summary, March 2009 quarter - December 2010 quarter

	2009				2010			
	Qtr 1	Qtr 2	Qtr 3	Qtr 4	Qtr 1	Qtr 2	Qtr 3	Qtr 4
Adolescent	32	30	12	-	-	-	-	-
Amputee	29	22	24	17	10	16	31	11
Anaesthetic	2,150	2,149	1,943	1,833	1,815	1,968	1,989	1,902
Antenatal	2,816	2,848	2,683	2,625	2,554	2,429	2,641	2,348
Breast clinic	358	639	811	782	754	768	866	783
Burns	76	85	183	228	175	176	212	278
Cardiology	730	767	813	724	757	799	820	778
Cardiothoracic	112	96	133	139	158	182	200	178
Colorectal	87	85	83	85	91	71	92	70
Colposcopy	288	367	407	360	377	313	351	292
Dental	246	232	205	227	249	263	204	243
Dermatology	799	769	901	813	773	732	847	722
Developmental	89	99	96	117	100	103	102	95
Diabetic	448	435	517	472	441	464	411	450
Diabetic education	165	299	226	176	127	116	72	112
Endocrinology	267	314	328	306	291	353	356	351
Endoscopy	66	58	72	80	83	61	77	57
Ear, nose & throat	1,596	1,454	1,598	1,494	1,508	1,728	1,682	1,760
Family planning	46	47	60	42	42	53	50	50
Fertility	64	79	111	75	80	53	86	63
Gastroenterology	816	747	855	714	801	814	862	895
General medicine	456	444	538	432	484	529	546	513
General surgery	1,328	1,325	1,355	1,337	1,193	1,300	1,204	1,250
Geriatrics	186	153	206	193	207	262	297	305
Gynaecology	803	796	792	829	736	755	851	724
Haematology	482	538	525	564	558	556	589	566
Hepatology	193	204	180	198	202	164	240	186
Hyperbaric	29	36	33	36	24	15	18	33
Hypertension	79	98	78	66	66	51	59	44
Immunology	557	658	569	520	536	617	671	568
Infectious diseases	493	437	479	465	478	506	536	404
Menopause	102	94	117	106	93	106	81	74
Neurogenetic	32	59	36	44	27	39	38	36
Neurology	1,176	1,218	1,231	1,084	1,210	1,126	1,243	1,185
Neurosurgery	533	585	601	613	650	689	723	611
Oncology	730	697	762	749	748	713	814	748
Ophthalmology	1,992	2,028	1,996	2,026	2,043	2,068	2,227	2,216
Oral surgery	77	74	64	107	77	93	104	107
Orthopaedics	2,385	3,158	2,711	2,663	2,366	2,702	2,855	3,014
Orthopaedics - trauma	752	774	787	779	739	709	715	733
Osteoporosis	29	23	42	50	40	29	29	34

WA Outpatient Quarterly Report, March 2012 Quarter

Table A-11: Quarterly new outpatient appointments by specialty, WA, metropolitan summary, March 2009 quarter - December 2010 quarter (continued)

	2009				2010			
	Qtr 1	Qtr 2	Qtr 3	Qtr 4	Qtr 1	Qtr 2	Qtr 3	Qtr 4
Paediatric neurology	8	6	7	6	3	9	12	7
Paediatric surgery	30	23	24	22	24	33	30	32
Paediatrics	189	195	160	176	179	223	220	174
Pain	881	763	680	677	623	778	787	825
Palliative care	57	45	56	54	58	58	47	61
Plastic dressings	796	834	911	944	926	905	893	942
Plastic surgery	2,256	2,819	2,668	2,582	2,370	2,686	2,569	2,142
Podiatry	344	316	431	335	369	346	360	357
Preadmission	1,443	1,529	1,565	1,494	1,404	1,479	1,528	1,394
Radiation oncology	239	297	321	301	337	321	292	307
Radiotherapy	490	508	481	472	482	485	538	511
Rehabilitation medicine	58	59	64	36	50	39	46	34
Renal	374	319	344	360	369	364	343	370
Respiratory medicine	482	504	568	561	466	586	686	607
Rheumatology	389	437	434	415	405	401	515	462
Scoliosis	51	66	39	31	52	41	50	41
Sexual health	389	422	421	336	411	404	493	394
Spinal	257	266	251	242	211	208	220	223
Thoracic surgery	96	112	146	131	131	126	149	123
Ulcer	68	62	69	53	58	73	84	58
Urology	967	1,043	1,007	937	889	1,023	1,086	885
Vascular surgery	415	384	410	443	434	402	409	375
Total	33,973	36,029	36,220	34,778	33,914	35,481	37,148	35,114

Table A-12: Quarterly new outpatient appointments by specialty, metropolitan summary, March 2011 quarter - March 2012 quarter

	2011				2012			
	Qtr 1	Qtr 2	Qtr 3	Qtr 4	Qtr 1	Qtr 2	Qtr 3	Qtr 4
Adolescent	-	-	-	-	-			
Amputee	23	25	19	31	25			
Anaesthetic	1,739	1,828	1,725	1,405	1,657			
Antenatal	2,437	2,285	2,262	2,185	2,480			
Breast clinic	766	799	773	734	846			
Burns	178	191	235	227	216			
Cardiology	771	728	771	645	686			
Cardiothoracic	184	231	205	184	193			
Colorectal	73	89	64	71	77			
Colposcopy	293	343	318	239	389			
Dental	225	212	255	268	272			
Dermatology	799	846	914	847	922			
Developmental	84	92	73	90	64			
Diabetic	406	427	450	512	493			
Diabetic education	131	240	221	203	181			
Endocrinology	376	459	484	450	468			
Endoscopy	62	68	57	59	62			
Ear, nose & throat	1,725	1,630	1,861	1,516	1,554			
Family planning	37	46	44	45	55			
Fertility	63	79	72	91	42			
Gastroenterology	893	943	944	831	976			
General medicine	564	583	587	532	560			
General surgery	1,258	1,178	1,313	1,145	1,107			
Geriatrics	306	257	359	243	318			
Gynaecology	619	698	678	589	667			
Haematology	567	560	589	548	578			
Hepatology	205	174	155	157	178			
Hyperbaric	19	16	11	22	27			
Hypertension	43	62	73	62	90			
Immunology	649	646	571	592	723			
Infectious diseases	494	467	479	549	588			
Menopause	64	99	97	89	97			
Neurogenetic	43	35	29	20	36			
Neurology	1,137	1,181	1,262	1,133	1,175			
Neurosurgery	686	677	801	652	608			
Oncology	716	728	752	748	786			
Ophthalmology	2,171	2,261	2,232	2,269	2,410			
Oral surgery	118	141	154	160	134			
Orthopaedics	2,679	3,332	3,268	3,121	2,868			
Orthopaedics - trauma	684	707	726	705	761			
Osteoporosis	30	36	43	23	38			

WA Outpatient Quarterly Report, March 2012 Quarter

Table A-12: Quarterly new outpatient appointments by specialty, WA, metropolitan summary, March 2011 quarter - March 2012 quarter (continued)

	2011				2012			
	Qtr 1	Qtr 2	Qtr 3	Qtr 4	Qtr 1	Qtr 2	Qtr 3	Qtr 4
Paediatric neurology	11	14	10	18	14			
Paediatric surgery	23	26	37	39	34			
Paediatrics	196	227	210	214	232			
Pain	824	867	847	772	780			
Palliative care	44	60	69	65	60			
Plastic dressings	942	992	920	930	882			
Plastic surgery	1,398	1,816	1,925	1,635	1,644			
Podiatry	385	360	418	343	364			
Preadmission	1,510	1,633	1,661	1,426	1,554			
Radiation oncology	321	307	374	367	370			
Radiotherapy	506	533	497	528	506			
Rehabilitation medicine	36	33	32	26	21			
Renal	374	358	320	326	289			
Respiratory medicine	828	870	1,029	928	1,003			
Rheumatology	480	477	573	446	441			
Scoliosis	58	46	83	44	57			
Sexual health	471	406	431	404	502			
Spinal	208	214	283	229	242			
Thoracic surgery	136	147	116	120	117			
Ulcer	56	77	90	82	59			
Urology	946	982	1,025	884	1,037			
Vascular surgery	406	418	437	353	387			
Total	34,476	36,262	37,313	34,175	36,014			

Table A-13: Quarterly new outpatient appointments by specialty, Royal Perth Hospital, March 2007 quarter - December 2008 quarter

	2007				2008			
	Qtr 1	Qtr 2	Qtr 3	Qtr 4	Qtr 1	Qtr 2	Qtr 3	Qtr 4
Adolescent	-	-	-	-	-	-	-	-
Amputee	-	-	-	-	-	-	-	-
Anaesthetic	-	-	-	-	-	-	-	-
Antenatal	-	-	-	-	-	-	-	-
Breast clinic	38	37	85	97	98	82	89	124
Burns	119	130	72	124	128	47	32	15
Cardiology	277	326	272	279	242	251	309	295
Cardiothoracic	-	-	-	-	8	6	-	-
Colorectal	64	78	89	81	66	93	105	105
Colposcopy	-	-	-	-	-	-	-	-
Dental	292	274	274	237	233	205	222	231
Dermatology	184	199	242	176	200	207	231	221
Developmental	-	-	-	-	-	-	-	-
Diabetic	357	372	322	377	328	310	317	403
Diabetic education	-	-	-	-	-	-	-	-
Endocrinology	71	92	82	86	82	91	85	103
Endoscopy	-	-	-	-	-	-	-	-
Ear, nose & throat	323	276	347	317	332	324	393	299
Family planning	-	-	-	-	-	-	-	-
Fertility	-	-	-	-	-	-	-	-
Gastroenterology	299	325	358	401	419	425	430	393
General medicine	42	47	56	36	49	31	39	29
General surgery	157	185	201	218	224	223	284	244
Geriatrics	-	-	-	-	-	-	-	-
Gynaecology	-	-	-	-	-	-	-	-
Haematology	221	168	185	193	193	246	217	215
Hepatology	54	42	41	40	40	57	51	52
Hyperbaric	-	-	-	-	-	-	-	-
Hypertension	22	31	75	85	80	114	82	89
Immunology	94	81	88	89	89	105	96	98
Infectious diseases	37	35	25	30	29	22	30	30
Menopause	-	-	-	-	-	-	-	-
Neurogenetic	41	37	39	28	38	39	33	32
Neurology	333	318	356	294	334	345	388	331
Neurosurgery	17	20	3	1	2	6	5	5
Oncology	220	180	206	182	206	224	214	241
Ophthalmology	594	692	729	668	700	762	889	858
Oral surgery	-	-	-	-	-	-	-	-
Orthopaedics	63	108	114	107	108	162	155	114
Orthopaedics - trauma	559	613	560	601	653	642	700	732
Osteoporosis	19	16	14	19	24	28	43	35

WA Outpatient Quarterly Report, March 2012 Quarter

Table A-13: Quarterly new outpatient appointments by specialty, Royal Perth Hospital, March 2007 quarter - December 2008 quarter (continued)

	2007				2008			
	Qtr 1	Qtr 2	Qtr 3	Qtr 4	Qtr 1	Qtr 2	Qtr 3	Qtr 4
Paediatric neurology	-	-	-	-	-	-	-	-
Paediatric surgery	-	-	-	-	-	-	-	-
Paediatrics	-	-	-	-	-	-	-	-
Pain	-	-	-	-	-	-	-	-
Palliative care	13	13	12	18	17	13	15	15
Plastic dressings	-	-	-	-	-	-	-	-
Plastic surgery	738	683	735	666	846	919	856	828
Podiatry	149	112	89	88	62	164	89	100
Preadmission	913	942	934	876	975	1,034	1,074	890
Radiation oncology	158	174	210	219	184	189	171	197
Radiotherapy	-	-	-	-	-	-	-	-
Rehabilitation medicine	-	-	-	-	-	-	-	-
Renal	59	68	94	88	65	68	70	61
Respiratory medicine	142	184	208	174	137	184	169	177
Rheumatology	89	68	99	75	85	77	97	83
Scoliosis	-	-	-	-	-	-	-	-
Sexual health	355	311	318	271	395	364	333	344
Spinal	-	-	-	-	-	-	-	-
Thoracic surgery	-	-	-	-	-	-	-	-
Ulcer	55	71	35	43	36	45	40	19
Urology	146	183	183	176	156	235	176	160
Vascular surgery	163	137	178	136	173	173	147	193
Total	7,477	7,628	7,930	7,596	8,036	8,512	8,676	8,361

Table A-14: Quarterly new outpatient appointments by specialty, Royal Perth Hospital, March 2009 quarter - December 2010 quarter

	2009				2010			
	Qtr 1	Qtr 2	Qtr 3	Qtr 4	Qtr 1	Qtr 2	Qtr 3	Qtr 4
Adolescent	-	-	-	-	-	-	-	-
Amputee	-	-	-	-	-	-	-	-
Anaesthetic	-	-	-	-	-	-	-	-
Antenatal	-	-	-	-	-	-	-	-
Breast clinic	98	65	91	93	62	47	90	103
Burns	14	31	117	163	128	101	152	213
Cardiology	323	336	332	283	340	319	357	331
Cardiothoracic	-	-	11	8	9	4	27	26
Colorectal	87	85	83	85	91	71	92	70
Colposcopy	-	-	-	-	-	-	-	-
Dental	246	232	205	227	249	263	204	243
Dermatology	270	237	271	284	288	238	238	228
Developmental	-	-	-	-	-	-	-	-
Diabetic	297	272	347	306	289	295	268	279
Diabetic education	-	-	-	-	-	-	-	-
Endocrinology	79	73	102	90	86	83	83	81
Endoscopy	-	-	-	-	-	-	-	-
Ear, nose & throat	282	222	305	297	322	340	321	340
Family planning	-	-	-	-	-	-	-	-
Fertility	-	-	-	-	-	-	-	-
Gastroenterology	459	412	443	385	397	404	452	447
General medicine	36	40	51	28	26	30	35	34
General surgery	267	212	233	264	233	198	215	220
Geriatrics	-	-	-	-	-	-	-	-
Gynaecology	-	-	-	-	-	-	-	-
Haematology	230	258	246	264	267	258	274	288
Hepatology	51	56	52	64	57	42	62	41
Hyperbaric	-	-	-	-	-	-	-	-
Hypertension	79	98	78	66	66	51	59	44
Immunology	97	115	100	106	110	127	122	82
Infectious diseases	34	31	22	35	24	26	33	13
Menopause	-	-	-	-	-	-	-	-
Neurogenetic	32	59	36	44	27	39	38	36
Neurology	435	403	336	312	373	331	363	379
Neurosurgery	16	22	18	7	16	15	16	9
Oncology	184	206	209	217	251	226	266	228
Ophthalmology	876	842	851	876	887	819	853	873
Oral surgery	-	-	-	-	-	-	-	-
Orthopaedics	97	106	116	97	45	81	92	134
Orthopaedics - trauma	752	774	787	779	739	709	715	733
Osteoporosis	29	23	42	50	40	29	29	34

WA Outpatient Quarterly Report, March 2012 Quarter

Table A-14: Quarterly new outpatient appointments by specialty, Royal Perth Hospital, March 2009 quarter - December 2010 quarter (continued)

	2009				2010			
	Qtr 1	Qtr 2	Qtr 3	Qtr 4	Qtr 1	Qtr 2	Qtr 3	Qtr 4
Paediatric neurology	-	-	-	-	-	-	-	-
Paediatric surgery	-	-	-	-	-	-	-	-
Paediatrics	-	-	-	-	-	-	-	-
Pain	-	-	-	-	-	1	-	-
Palliative care	14	13	19	13	15	19	22	19
Plastic dressings	-	-	-	-	-	-	-	-
Plastic surgery	768	764	644	693	709	735	364	196
Podiatry	107	93	128	90	111	123	112	108
Preadmission	971	1,041	1,053	1,043	953	1,013	984	937
Radiation oncology	177	240	252	225	282	261	228	233
Radiotherapy	-	-	-	-	-	-	-	-
Rehabilitation medicine	-	-	-	-	-	-	-	-
Renal	64	71	73	73	86	91	82	101
Respiratory medicine	161	167	185	154	135	157	180	155
Rheumatology	77	91	98	94	95	87	127	114
Scoliosis	-	-	-	-	-	-	-	-
Sexual health	376	397	398	321	392	370	466	376
Spinal	-	-	-	-	-	-	-	-
Thoracic surgery	-	-	-	-	-	-	-	-
Ulcer	36	38	39	32	29	40	30	39
Urology	192	286	306	245	245	252	304	251
Vascular surgery	175	165	135	165	179	164	144	118
Total	8,488	8,576	8,814	8,578	8,653	8,459	8,499	8,156

Table A-15: Quarterly new outpatient appointments by specialty, Royal Perth Hospital, March 2011 quarter - March 2012 quarter

	2011				2012			
	Qtr 1	Qtr 2	Qtr 3	Qtr 4	Qtr 1	Qtr 2	Qtr 3	Qtr 4
Adolescent	-	-	-	-	-			
Amputee	-	-	-	-	-			
Anaesthetic	-	-	-	-	-			
Antenatal	-	-	-	-	-			
Breast clinic	142	143	151	138	192			
Burns	129	140	173	185	180			
Cardiology	342	246	296	216	217			
Cardiothoracic	34	33	32	39	19			
Colorectal	73	89	64	71	77			
Colposcopy	-	-	-	-	-			
Dental	225	212	255	268	272			
Dermatology	240	259	264	249	284			
Developmental	-	-	-	-	-			
Diabetic	246	256	275	361	330			
Diabetic education	-	-	-	-	-			
Endocrinology	68	94	101	75	109			
Endoscopy	-	-	-	-	-			
Ear, nose & throat	370	318	288	310	241			
Family planning	-	-	-	-	-			
Fertility	-	-	-	-	-			
Gastroenterology	425	422	445	397	441			
General medicine	20	30	31	20	27			
General surgery	190	188	218	220	200			
Geriatrics	-	-	-	-	-			
Gynaecology	-	-	-	-	-			
Haematology	252	258	263	222	220			
Hepatology	58	56	33	41	39			
Hyperbaric	-	-	-	-	-			
Hypertension	43	62	73	62	90			
Immunology	97	104	116	118	148			
Infectious diseases	9	26	30	20	32			
Menopause	-	-	-	-	-			
Neurogenetic	43	35	29	20	36			
Neurology	353	335	393	276	302			
Neurosurgery	27	39	33	18	23			
Oncology	262	250	272	225	265			
Ophthalmology	910	953	959	855	941			
Oral surgery	-	-	-	-	-			
Orthopaedics	126	128	179	135	149			
Orthopaedics - trauma	684	707	726	705	761			
Osteoporosis	30	36	43	23	38			

WA Outpatient Quarterly Report, March 2012 Quarter

Table A-15: Quarterly new outpatient appointments by specialty, Royal Perth Hospital, March 2011 quarter - March 2012 quarter (continued)

	2011				2012			
	Qtr 1	Qtr 2	Qtr 3	Qtr 4	Qtr 1	Qtr 2	Qtr 3	Qtr 4
Paediatric neurology	-	-	-	-	-			
Paediatric surgery	-	-	-	-	-			
Paediatrics	-	-	-	-	-			
Pain	-	-	-	-	-			
Palliative care	18	27	32	20	31			
Plastic dressings	-	-	-	-	-			
Plastic surgery	244	716	857	573	635			
Podiatry	115	120	137	135	118			
Preadmission	1,005	1,091	1,082	877	986			
Radiation oncology	256	239	286	298	271			
Radiotherapy	-	-	-	-	-			
Rehabilitation medicine	-	-	-	-	-			
Renal	105	106	93	73	64			
Respiratory medicine	161	181	235	170	191			
Rheumatology	114	131	163	94	90			
Scoliosis	-	-	-	-	-			
Sexual health	447	388	412	386	487			
Spinal	-	-	-	-	-			
Thoracic surgery	-	-	-	-	-			
Ulcer	27	48	57	46	29			
Urology	294	254	315	296	329			
Vascular surgery	146	177	167	106	161			
Total	8,330	8,897	9,578	8,343	9,025			

Table A-16: Quarterly new outpatient appointments by specialty, Royal Perth Rehabilitation Hospital, March 2007 quarter - December 2008 quarter

	2007				2008			
	Qtr 1	Qtr 2	Qtr 3	Qtr 4	Qtr 1	Qtr 2	Qtr 3	Qtr 4
Adolescent	-	-	-	-	-	-	-	-
Amputee	12	10	12	11	11	13	12	9
Anaesthetic	-	-	-	-	-	-	-	-
Antenatal	-	-	-	-	-	-	-	-
Breast clinic	-	-	-	-	-	-	-	-
Burns	-	-	-	-	-	-	-	-
Cardiology	-	-	-	-	-	-	-	-
Cardiothoracic	-	-	-	-	-	-	-	-
Colorectal	-	-	-	-	-	-	-	-
Colposcopy	-	-	-	-	-	-	-	-
Dental	-	-	-	-	-	-	-	-
Dermatology	-	-	-	-	-	-	-	-
Developmental	-	-	-	-	-	-	-	-
Diabetic	-	-	-	-	-	-	-	-
Diabetic education	-	-	-	-	-	-	-	-
Endocrinology	-	-	-	-	-	-	-	-
Endoscopy	-	-	-	-	-	-	-	-
Ear, nose & throat	-	-	-	-	-	-	-	-
Family planning	-	-	-	-	-	-	-	-
Fertility	-	-	-	-	-	-	-	-
Gastroenterology	-	-	-	-	-	-	-	-
General medicine	-	-	-	-	-	-	-	-
General surgery	-	-	-	-	-	-	-	-
Geriatrics	-	-	-	-	-	-	-	-
Gynaecology	-	-	-	-	-	-	-	-
Haematology	-	-	-	-	-	-	-	-
Hepatology	-	-	-	-	-	-	-	-
Hyperbaric	-	-	-	-	-	-	-	-
Hypertension	-	-	-	-	-	-	-	-
Immunology	-	-	-	-	-	-	-	-
Infectious diseases	-	-	-	-	-	-	-	-
Menopause	-	-	-	-	-	-	-	-
Neurogenetic	-	-	-	-	-	-	-	-
Neurology	81	45	75	45	60	71	65	68
Neurosurgery	-	-	-	-	-	-	-	-
Oncology	-	-	-	-	-	-	-	-
Ophthalmology	-	-	-	-	-	-	-	-
Oral surgery	-	-	-	-	-	-	-	-
Orthopaedics	340	360	319	300	299	317	292	246
Orthopaedics - trauma	-	-	-	-	-	-	-	-
Osteoporosis	-	-	-	-	-	-	-	-

WA Outpatient Quarterly Report, March 2012 Quarter

Table A-16: Quarterly new outpatient appointments by specialty, Royal Perth Rehabilitation Hospital, March 2007 quarter - December 2008 quarter (continued)

	2007				2008			
	Qtr 1	Qtr 2	Qtr 3	Qtr 4	Qtr 1	Qtr 2	Qtr 3	Qtr 4
Paediatric neurology	-	-	-	-	-	-	-	-
Paediatric surgery	-	-	-	-	-	-	-	-
Paediatrics	-	-	-	-	-	-	-	-
Pain	82	98	113	104	158	159	114	131
Palliative care	-	-	-	-	-	-	-	-
Plastic dressings	-	-	-	-	-	-	-	-
Plastic surgery	-	-	-	-	-	-	-	-
Podiatry	17	10	13	12	28	22	16	11
Preadmission	486	567	516	486	480	541	528	441
Radiation oncology	-	-	-	-	-	-	-	-
Radiotherapy	-	-	-	-	-	-	-	-
Rehabilitation medicine	94	94	100	45	57	68	38	32
Renal	-	-	-	-	-	-	-	-
Respiratory medicine	-	-	-	-	-	-	-	-
Rheumatology	91	75	133	109	79	76	79	119
Scoliosis	19	33	35	58	53	58	55	39
Sexual health	-	-	-	-	-	-	-	-
Spinal	144	137	163	199	211	234	233	218
Thoracic surgery	-	-	-	-	-	-	-	-
Ulcer	-	-	-	-	-	-	-	-
Urology	132	154	130	125	85	137	70	164
Vascular surgery	-	-	-	-	-	-	-	-
Total	1,498	1,583	1,609	1,494	1,521	1,696	1,502	1,478

Table A-17: Quarterly new outpatient appointments by specialty, Royal Perth Rehabilitation Hospital, March 2009 quarter - December 2010 quarter

	2009				2010			
	Qtr 1	Qtr 2	Qtr 3	Qtr 4	Qtr 1	Qtr 2	Qtr 3	Qtr 4
Adolescent	-	-	-	-	-	-	-	-
Amputee	8	12	11	9	6	11	20	6
Anaesthetic	-	-	-	-	-	-	-	-
Antenatal	-	-	-	-	-	-	-	-
Breast clinic	-	-	-	-	-	-	-	-
Burns	-	-	-	-	-	-	-	-
Cardiology	-	-	-	-	-	-	-	-
Cardiothoracic	-	-	-	-	-	-	-	-
Colorectal	-	-	-	-	-	-	-	-
Colposcopy	-	-	-	-	-	-	-	-
Dental	-	-	-	-	-	-	-	-
Dermatology	-	-	-	-	-	-	-	-
Developmental	-	-	-	-	-	-	-	-
Diabetic	-	-	-	-	-	-	-	-
Diabetic education	-	-	-	-	-	-	-	-
Endocrinology	-	-	-	-	-	-	-	-
Endoscopy	-	-	-	-	-	-	-	-
Ear, nose & throat	-	-	-	-	-	-	-	-
Family planning	-	-	-	-	-	-	-	-
Fertility	-	-	-	-	-	-	-	-
Gastroenterology	-	-	-	-	-	-	-	-
General medicine	-	-	-	-	-	-	-	-
General surgery	-	-	-	-	-	-	-	-
Geriatrics	-	-	-	-	-	-	-	-
Gynaecology	-	-	-	-	-	-	-	-
Haematology	-	-	-	-	-	-	-	-
Hepatology	-	-	-	-	-	-	-	-
Hyperbaric	-	-	-	-	-	-	-	-
Hypertension	-	-	-	-	-	-	-	-
Immunology	-	-	-	-	-	-	-	-
Infectious diseases	-	-	-	-	-	-	-	-
Menopause	-	-	-	-	-	-	-	-
Neurogenetic	-	-	-	-	-	-	-	-
Neurology	67	74	81	80	56	62	81	52
Neurosurgery	-	-	-	-	-	-	-	-
Oncology	-	-	-	-	-	-	-	-
Ophthalmology	-	-	-	-	-	-	-	-
Oral surgery	-	-	-	-	-	-	-	-
Orthopaedics	208	272	333	307	243	304	331	305
Orthopaedics - trauma	-	-	-	-	-	-	-	-
Osteoporosis	-	-	-	-	-	-	-	-

WA Outpatient Quarterly Report, March 2012 Quarter

Table A-17: Quarterly new outpatient appointments by specialty, Royal Perth Rehabilitation Hospital, March 2009 quarter - December 2010 quarter (continued)

	2009				2010			
	Qtr 1	Qtr 2	Qtr 3	Qtr 4	Qtr 1	Qtr 2	Qtr 3	Qtr 4
Paediatric neurology	-	-	-	-	-	-	-	-
Paediatric surgery	-	-	-	-	-	-	-	-
Paediatrics	-	-	-	-	-	-	-	-
Pain	128	144	124	57	73	126	146	166
Palliative care	-	-	-	-	-	-	-	-
Plastic dressings	-	-	-	-	-	-	-	-
Plastic surgery	-	-	-	-	-	-	-	-
Podiatry	12	14	15	24	18	17	10	13
Preadmission	472	488	512	451	450	466	544	457
Radiation oncology	-	-	-	-	-	-	-	-
Radiotherapy	-	-	-	-	-	-	-	-
Rehabilitation medicine	58	59	64	36	50	39	46	34
Renal	-	-	-	-	-	-	-	-
Respiratory medicine	-	-	-	-	-	-	-	-
Rheumatology	81	109	108	81	61	75	100	80
Scoliosis	51	66	39	31	52	41	50	41
Sexual health	-	-	-	-	-	-	-	-
Spinal	257	266	251	242	211	208	220	223
Thoracic surgery	-	-	-	-	-	-	-	-
Ulcer	-	-	-	-	-	-	-	-
Urology	155	173	140	142	158	136	153	125
Vascular surgery	-	-	-	-	-	-	-	-
Total	1,497	1,677	1,678	1,460	1,378	1,485	1,701	1,502

Table A-18: Quarterly new outpatient appointments by specialty, Royal Perth Rehabilitation Hospital, March 2011 quarter - March 2012 quarter

	2011				2012			
	Qtr 1	Qtr 2	Qtr 3	Qtr 4	Qtr 1	Qtr 2	Qtr 3	Qtr 4
Adolescent	-	-	-	-	-			
Amputee	11	16	13	9	11			
Anaesthetic	-	-	-	-	-			
Antenatal	-	-	-	-	-			
Breast clinic	-	-	-	-	-			
Burns	-	-	-	-	-			
Cardiology	-	-	-	-	-			
Cardiothoracic	-	-	-	-	-			
Colorectal	-	-	-	-	-			
Colposcopy	-	-	-	-	-			
Dental	-	-	-	-	-			
Dermatology	-	-	-	-	-			
Developmental	-	-	-	-	-			
Diabetic	-	-	-	-	-			
Diabetic education	-	-	-	-	-			
Endocrinology	-	-	-	-	-			
Endoscopy	-	-	-	-	-			
Ear, nose & throat	-	-	-	-	-			
Family planning	-	-	-	-	-			
Fertility	-	-	-	-	-			
Gastroenterology	-	-	-	-	-			
General medicine	-	-	-	-	-			
General surgery	-	-	-	-	-			
Geriatrics	-	-	-	-	-			
Gynaecology	-	-	-	-	-			
Haematology	-	-	-	-	-			
Hepatology	-	-	-	-	-			
Hyperbaric	-	-	-	-	-			
Hypertension	-	-	-	-	-			
Immunology	-	-	-	-	-			
Infectious diseases	-	-	-	-	-			
Menopause	-	-	-	-	-			
Neurogenetic	-	-	-	-	-			
Neurology	49	52	68	59	52			
Neurosurgery	-	-	-	-	-			
Oncology	-	-	-	-	-			
Ophthalmology	-	-	-	-	-			
Oral surgery	-	-	-	-	-			
Orthopaedics	276	406	499	492	456			
Orthopaedics - trauma	-	-	-	-	-			
Osteoporosis	-	-	-	-	-			

WA Outpatient Quarterly Report, March 2012 Quarter

Table A-18: Quarterly new outpatient appointments by specialty, Royal Perth Rehabilitation Hospital, March 2011 quarter - March 2012 quarter (continued)

	2011				2012			
	Qtr 1	Qtr 2	Qtr 3	Qtr 4	Qtr 1	Qtr 2	Qtr 3	Qtr 4
Paediatric neurology	-	-	-	-	-			
Paediatric surgery	-	-	-	-	-			
Paediatrics	-	-	-	-	-			
Pain	149	161	154	171	177			
Palliative care	-	-	-	-	-			
Plastic dressings	-	-	-	-	-			
Plastic surgery	-	-	-	-	-			
Podiatry	17	14	12	14	5			
Preadmission	503	540	578	542	568			
Radiation oncology	-	-	-	-	-			
Radiotherapy	-	-	-	-	-			
Rehabilitation medicine	36	33	32	26	21			
Renal	-	-	-	-	-			
Respiratory medicine	-	-	-	-	-			
Rheumatology	83	74	127	82	81			
Scoliosis	58	46	83	44	57			
Sexual health	-	-	-	-	-			
Spinal	208	214	283	229	242			
Thoracic surgery	-	-	-	-	-			
Ulcer	-	-	-	-	-			
Urology	119	113	127	140	126			
Vascular surgery	-	-	-	-	-			
Total	1,509	1,669	1,976	1,808	1,796			

Table A-19: Quarterly new outpatient appointments by specialty, Fremantle Hospital, March 2007 quarter - December 2008 quarter

	2007				2008			
	Qtr 1	Qtr 2	Qtr 3	Qtr 4	Qtr 1	Qtr 2	Qtr 3	Qtr 4
Adolescent	-	-	-	-	-	-	-	-
Amputee	18	21	16	4	6	5	8	12
Anaesthetic	1	-	-	131	1,778	1,886	1,886	2,121
Antenatal	241	270	282	254	267	310	311	357
Breast clinic	-	-	-	-	-	-	-	-
Burns	-	-	-	-	-	-	-	-
Cardiology	97	100	89	90	78	101	112	130
Cardiothoracic	52	53	49	56	58	73	67	63
Colorectal	-	-	-	-	-	-	-	-
Colposcopy	-	-	-	-	-	-	-	-
Dental	-	-	-	-	-	-	-	-
Dermatology	144	140	155	145	117	152	221	195
Developmental	-	-	-	-	-	-	-	-
Diabetic	31	32	37	33	19	28	47	38
Diabetic education	181	180	178	151	181	210	227	170
Endocrinology	31	46	50	46	41	50	52	45
Endoscopy	-	-	-	-	-	-	-	-
Ear, nose & throat	282	307	380	272	234	255	420	326
Family planning	-	-	-	-	-	-	-	-
Fertility	-	-	-	-	-	-	-	-
Gastroenterology	206	209	229	193	204	281	260	243
General medicine	63	68	77	68	65	82	62	39
General surgery	272	374	452	405	364	393	385	367
Geriatrics	-	-	-	-	-	-	-	-
Gynaecology	102	98	125	112	144	150	194	146
Haematology	67	54	64	78	62	102	83	84
Hepatology	-	-	-	-	-	-	-	-
Hyperbaric	27	35	28	38	34	33	19	27
Hypertension	-	-	-	-	-	-	-	-
Immunology	100	130	109	91	99	138	121	111
Infectious diseases	352	390	417	374	365	422	374	365
Menopause	-	-	-	-	-	-	-	-
Neurogenetic	-	-	-	-	-	-	-	-
Neurology	274	235	270	184	315	421	447	385
Neurosurgery	-	-	-	-	-	-	-	-
Oncology	83	83	74	82	77	79	61	83
Ophthalmology	301	258	494	358	363	430	436	395
Oral surgery	19	15	14	22	78	74	89	87
Orthopaedics	1,239	1,223	756	514	396	556	606	664
Orthopaedics - trauma	-	-	-	-	-	-	-	-
Osteoporosis	-	-	-	-	-	-	-	-

WA Outpatient Quarterly Report, March 2012 Quarter

Table A-19: Quarterly new outpatient appointments by specialty, Fremantle Hospital, March 2007 quarter - December 2008 quarter (continued)

	2007				2008			
	Qtr 1	Qtr 2	Qtr 3	Qtr 4	Qtr 1	Qtr 2	Qtr 3	Qtr 4
Paediatric neurology	7	6	6	8	7	11	6	5
Paediatric surgery	21	16	14	11	17	22	18	22
Paediatrics	27	37	56	40	40	65	67	67
Pain	27	28	56	328	264	396	377	536
Palliative care	-	-	-	-	-	-	-	-
Plastic dressings	-	-	-	-	-	-	-	-
Plastic surgery	75	78	87	78	72	65	76	162
Podiatry	140	165	138	128	133	163	165	119
Preadmission	-	-	-	-	-	-	-	-
Radiation oncology	75	86	61	35	61	61	70	75
Radiotherapy	-	-	-	-	-	-	-	-
Rehabilitation medicine	-	-	-	-	-	-	-	-
Renal	89	127	164	169	285	145	203	198
Respiratory medicine	-	-	-	-	-	-	-	-
Rheumatology	60	69	47	40	54	69	73	42
Scoliosis	-	-	-	-	-	-	-	-
Sexual health	-	-	-	-	-	-	-	-
Spinal	-	-	-	-	-	-	-	-
Thoracic surgery	59	92	69	94	64	104	85	103
Ulcer	20	27	26	32	25	32	34	35
Urology	226	219	215	219	207	305	362	302
Vascular surgery	127	109	118	98	99	118	125	123
Total	5,136	5,380	5,402	4,981	6,673	7,787	8,149	8,242

Table A-20: Quarterly new outpatient appointments by specialty, Fremantle Hospital, March 2009 quarter - December 2010 quarter

	2009				2010			
	Qtr 1	Qtr 2	Qtr 3	Qtr 4	Qtr 1	Qtr 2	Qtr 3	Qtr 4
Adolescent	-	-	-	-	-	-	-	-
Amputee	21	10	13	8	4	5	11	5
Anaesthetic	2,150	2,149	1,943	1,833	1,815	1,968	1,989	1,902
Antenatal	433	393	378	413	431	433	465	449
Breast clinic	-	-	-	-	-	-	-	-
Burns	-	-	-	-	-	-	-	-
Cardiology	138	145	144	147	129	167	145	127
Cardiothoracic	58	59	62	56	63	77	62	61
Colorectal	-	-	-	-	-	-	-	-
Colposcopy	-	-	-	-	-	-	-	-
Dental	-	-	-	-	-	-	-	-
Dermatology	188	191	209	193	184	188	278	197
Developmental	-	-	-	-	-	-	-	-
Diabetic	39	42	48	46	44	52	41	52
Diabetic education	165	299	226	176	127	116	72	112
Endocrinology	51	66	57	67	65	78	59	55
Endoscopy	-	-	-	-	-	-	-	-
Ear, nose & throat	397	369	473	329	321	474	518	568
Family planning	-	-	-	-	-	-	-	-
Fertility	-	-	-	-	-	-	-	-
Gastroenterology	220	211	245	205	232	241	234	197
General medicine	68	59	34	54	42	49	48	55
General surgery	441	453	449	452	357	416	371	452
Geriatrics	-	-	-	-	-	-	-	-
Gynaecology	180	154	173	140	153	183	230	179
Haematology	68	103	90	108	99	120	112	103
Hepatology	-	-	-	-	-	-	-	-
Hyperbaric	29	36	33	36	24	15	18	33
Hypertension	-	-	-	-	-	-	-	-
Immunology	122	121	123	124	142	122	140	167
Infectious diseases	456	395	444	420	445	470	487	383
Menopause	-	-	-	-	-	-	-	-
Neurogenetic	-	-	-	-	-	-	-	-
Neurology	396	432	454	381	477	409	434	436
Neurosurgery	-	-	-	-	-	-	-	-
Oncology	77	69	63	79	85	81	86	108
Ophthalmology	402	443	439	449	435	474	523	598
Oral surgery	77	74	64	107	77	93	104	107
Orthopaedics	724	785	528	448	459	629	654	858
Orthopaedics - trauma	-	-	-	-	-	-	-	-
Osteoporosis	-	-	-	-	-	-	-	-

WA Outpatient Quarterly Report, March 2012 Quarter

Table A-20: Quarterly new outpatient appointments by specialty, Fremantle Hospital, March 2009 quarter - December 2010 quarter (continued)

	2009				2010			
	Qtr 1	Qtr 2	Qtr 3	Qtr 4	Qtr 1	Qtr 2	Qtr 3	Qtr 4
Paediatric neurology	8	6	7	6	3	9	12	7
Paediatric surgery	30	23	24	22	24	33	30	32
Paediatrics	92	73	58	71	71	101	100	72
Pain	586	380	199	149	191	209	168	196
Palliative care	-	-	-	-	-	-	-	-
Plastic dressings	-	-	-	-	-	-	-	-
Plastic surgery	125	204	174	216	80	171	225	218
Podiatry	139	81	142	99	121	117	115	120
Preadmission	-	-	-	-	-	-	-	-
Radiation oncology	62	57	69	76	55	60	64	74
Radiotherapy	-	-	-	-	-	-	-	-
Rehabilitation medicine	-	-	-	-	-	-	-	-
Renal	163	120	132	135	126	106	121	117
Respiratory medicine	-	-	-	-	-	-	-	-
Rheumatology	64	65	72	60	64	72	69	69
Scoliosis	-	-	-	-	-	-	-	-
Sexual health	-	-	-	-	-	-	-	-
Spinal	-	-	-	-	-	-	-	-
Thoracic surgery	96	112	146	131	131	126	149	123
Ulcer	32	24	30	21	29	33	54	19
Urology	397	312	298	316	258	348	354	286
Vascular surgery	141	120	158	122	96	133	151	131
Total	8,835	8,635	8,201	7,695	7,459	8,378	8,693	8,668

Table A-21: Quarterly new outpatient appointments by specialty, Fremantle Hospital, March 2011 quarter - March 2012 quarter

	2011				2012			
	Qtr 1	Qtr 2	Qtr 3	Qtr 4	Qtr 1	Qtr 2	Qtr 3	Qtr 4
Adolescent	-	-	-	-	-			
Amputee	12	9	6	22	14			
Anaesthetic	1,739	1,828	1,725	1,405	1,657			
Antenatal	502	497	525	481	503			
Breast clinic	-	-	-	-	-			
Burns	-	-	-	-	-			
Cardiology	149	165	168	145	123			
Cardiothoracic	61	67	69	62	69			
Colorectal	-	-	-	-	-			
Colposcopy	-	-	-	-	-			
Dental	-	-	-	-	-			
Dermatology	228	256	198	214	227			
Developmental	-	-	-	-	-			
Diabetic	57	50	49	41	44			
Diabetic education	131	240	221	203	181			
Endocrinology	58	41	46	45	57			
Endoscopy	-	-	-	-	-			
Ear, nose & throat	531	411	499	361	376			
Family planning	-	-	-	-	-			
Fertility	-	-	-	-	-			
Gastroenterology	244	251	267	240	254			
General medicine	72	65	55	68	38			
General surgery	444	435	391	378	376			
Geriatrics	-	-	-	-	-			
Gynaecology	134	172	164	97	138			
Haematology	100	106	110	88	104			
Hepatology	-	-	-	-	-			
Hyperbaric	19	16	11	22	27			
Hypertension	-	-	-	-	-			
Immunology	138	168	144	139	155			
Infectious diseases	473	435	429	512	521			
Menopause	-	-	-	-	-			
Neurogenetic	-	-	-	-	-			
Neurology	423	479	445	428	421			
Neurosurgery	-	-	-	-	-			
Oncology	68	60	69	74	71			
Ophthalmology	544	578	624	555	616			
Oral surgery	118	141	154	160	134			
Orthopaedics	621	631	700	659	522			
Orthopaedics - trauma	-	-	-	-	-			
Osteoporosis	-	-	-	-	-			

WA Outpatient Quarterly Report, March 2012 Quarter

Table A-21: Quarterly new outpatient appointments by specialty, Fremantle Hospital, March 2011 quarter - March 2012 quarter (continued)

	2011				2012			
	Qtr 1	Qtr 2	Qtr 3	Qtr 4	Qtr 1	Qtr 2	Qtr 3	Qtr 4
Paediatric neurology	11	14	10	18	14			
Paediatric surgery	23	26	37	39	34			
Paediatrics	110	89	95	94	91			
Pain	213	208	201	162	200			
Palliative care	-	-	-	-	-			
Plastic dressings	-	-	-	-	-			
Plastic surgery	206	227	243	226	185			
Podiatry	109	147	144	108	107			
Preadmission	-	-	-	-	-			
Radiation oncology	65	68	88	69	99			
Radiotherapy	-	-	-	-	-			
Rehabilitation medicine	-	-	-	-	-			
Renal	126	122	90	92	94			
Respiratory medicine	-	-	-	-	-			
Rheumatology	70	76	77	70	70			
Scoliosis	-	-	-	-	-			
Sexual health	-	-	-	-	-			
Spinal	-	-	-	-	-			
Thoracic surgery	136	147	116	120	117			
Ulcer	29	29	33	36	30			
Urology	317	330	277	238	310			
Vascular surgery	123	109	135	129	122			
Total	8,404	8,693	8,615	7,800	8,101			

Table A-22: Quarterly new outpatient appointments by specialty, Sir Charles Gairdner Hospital, March 2007 quarter - December 2008 quarter

	2007				2008			
	Qtr 1	Qtr 2	Qtr 3	Qtr 4	Qtr 1	Qtr 2	Qtr 3	Qtr 4
Adolescent	-	-	-	-	-	-	-	-
Amputee	-	-	-	-	-	-	-	-
Anaesthetic	-	-	-	-	-	-	-	-
Antenatal	-	-	-	-	-	-	-	-
Breast clinic	196	244	233	234	225	248	242	288
Burns	-	-	-	-	-	-	-	-
Cardiology	107	124	114	118	101	116	96	113
Cardiothoracic	60	54	65	56	56	72	64	48
Colorectal	-	-	-	-	-	-	-	-
Colposcopy	-	-	-	-	-	-	-	-
Dental	-	-	-	-	-	-	-	-
Dermatology	110	159	109	154	160	214	225	159
Developmental	-	-	-	-	-	-	-	-
Diabetic	97	101	104	105	101	141	180	142
Diabetic education	-	-	-	-	-	-	-	-
Endocrinology	62	80	91	94	68	96	87	80
Endoscopy	-	-	-	-	-	-	-	-
Ear, nose & throat	353	294	325	327	258	276	308	315
Family planning	-	-	-	-	-	-	-	-
Fertility	-	-	-	-	-	-	-	-
Gastroenterology	74	61	55	52	63	98	83	32
General medicine	51	56	42	58	45	54	51	48
General surgery	336	378	374	311	278	357	390	331
Geriatrics	183	179	222	162	200	181	194	155
Gynaecology	-	-	-	-	-	-	-	-
Haematology	116	92	100	133	96	130	122	110
Hepatology	91	94	123	88	114	119	125	99
Hyperbaric	-	-	-	-	-	-	-	-
Hypertension	-	-	-	-	-	-	-	-
Immunology	72	93	99	88	101	125	107	100
Infectious diseases	7	13	15	14	14	16	12	10
Menopause	-	-	-	-	-	-	-	-
Neurogenetic	-	-	-	-	-	-	-	-
Neurology	136	150	163	163	120	178	173	162
Neurosurgery	334	328	418	453	481	645	627	559
Oncology	194	174	445	1,017	982	1,009	882	245
Ophthalmology	304	360	376	268	289	333	340	397
Oral surgery	-	-	-	-	-	-	-	-
Orthopaedics	323	291	352	324	225	294	262	311
Orthopaedics - trauma	-	-	-	-	-	-	-	-
Osteoporosis	-	-	-	-	-	-	-	-

WA Outpatient Quarterly Report, March 2012 Quarter

Table A-22: Quarterly new outpatient appointments by specialty, Sir Charles Gairdner Hospital, March 2007 quarter - December 2008 quarter (continued)

	2007				2008			
	Qtr 1	Qtr 2	Qtr 3	Qtr 4	Qtr 1	Qtr 2	Qtr 3	Qtr 4
Paediatric neurology	-	-	-	-	-	-	-	-
Paediatric surgery	-	-	-	-	-	-	-	-
Paediatrics	-	-	-	-	-	-	-	-
Pain	185	180	148	171	199	251	258	152
Palliative care	18	23	21	31	36	31	31	17
Plastic dressings	923	829	901	884	781	840	857	931
Plastic surgery	265	266	254	250	165	272	261	274
Podiatry	93	81	97	132	98	130	102	67
Preadmission	11	30	16	22	21	25	9	2
Radiation oncology	-	-	-	-	-	-	-	-
Radiotherapy	453	441	490	489	439	489	482	551
Rehabilitation medicine	-	-	-	-	-	-	-	-
Renal	90	88	101	94	82	120	81	101
Respiratory medicine	106	98	101	103	136	153	160	159
Rheumatology	98	78	88	78	81	90	104	114
Scoliosis	-	-	-	-	-	-	-	-
Sexual health	-	-	-	-	-	-	-	-
Spinal	-	-	-	-	-	-	-	-
Thoracic surgery	-	-	-	-	-	-	-	-
Ulcer	-	-	-	-	-	-	-	-
Urology	112	120	128	111	103	252	199	188
Vascular surgery	115	87	103	70	113	106	83	88
Total	5,675	5,646	6,273	6,654	6,231	7,461	7,197	6,348

Table A-23: Quarterly new outpatient appointments by specialty, Sir Charles Gairdner Hospital, March 2009 quarter - December 2010 quarter

	2009				2010			
	Qtr 1	Qtr 2	Qtr 3	Qtr 4	Qtr 1	Qtr 2	Qtr 3	Qtr 4
Adolescent	-	-	-	-	-	-	-	-
Amputee	-	-	-	-	-	-	-	-
Anaesthetic	-	-	-	-	-	-	-	-
Antenatal	-	-	-	-	-	-	-	-
Breast clinic	260	574	720	689	692	721	776	680
Burns	-	-	-	-	-	-	-	-
Cardiology	99	112	158	128	124	136	128	128
Cardiothoracic	54	37	40	51	54	68	63	42
Colorectal	-	-	-	-	-	-	-	-
Colposcopy	-	-	-	-	-	-	-	-
Dental	-	-	-	-	-	-	-	-
Dermatology	214	185	235	209	172	194	194	160
Developmental	-	-	-	-	-	-	-	-
Diabetic	111	121	122	120	108	116	102	119
Diabetic education	-	-	-	-	-	-	-	-
Endocrinology	82	112	100	107	90	122	152	174
Endoscopy	-	-	-	-	-	-	-	-
Ear, nose & throat	407	362	354	331	348	391	384	392
Family planning	-	-	-	-	-	-	-	-
Fertility	-	-	-	-	-	-	-	-
Gastroenterology	40	53	94	57	95	82	105	167
General medicine	42	48	50	35	34	77	95	68
General surgery	322	385	365	354	322	363	287	283
Geriatrics	186	153	206	193	207	262	297	305
Gynaecology	-	-	-	-	-	-	-	-
Haematology	139	134	149	155	143	135	169	141
Hepatology	142	148	128	134	145	122	178	145
Hyperbaric	-	-	-	-	-	-	-	-
Hypertension	-	-	-	-	-	-	-	-
Immunology	112	120	114	87	91	107	114	91
Infectious diseases	3	11	13	10	9	10	16	8
Menopause	-	-	-	-	-	-	-	-
Neurogenetic	-	-	-	-	-	-	-	-
Neurology	118	140	165	180	161	191	232	212
Neurosurgery	486	529	556	585	605	646	676	569
Oncology	292	278	301	270	264	248	302	270
Ophthalmology	342	360	354	374	386	425	474	436
Oral surgery	-	-	-	-	-	-	-	-
Orthopaedics	405	752	650	682	438	333	389	509
Orthopaedics - trauma	-	-	-	-	-	-	-	-
Osteoporosis	-	-	-	-	-	-	-	-

WA Outpatient Quarterly Report, March 2012 Quarter

Table A-23: Quarterly new outpatient appointments by specialty, Sir Charles Gairdner Hospital, March 2009 quarter - December 2010 quarter (continued)

	2009				2010			
	Qtr 1	Qtr 2	Qtr 3	Qtr 4	Qtr 1	Qtr 2	Qtr 3	Qtr 4
Paediatric neurology	-	-	-	-	-	-	-	-
Paediatric surgery	-	-	-	-	-	-	-	-
Paediatrics	-	-	-	-	-	-	-	-
Pain	167	239	357	471	359	442	473	463
Palliative care	43	32	37	41	43	39	25	42
Plastic dressings	796	834	911	944	926	905	893	942
Plastic surgery	263	259	272	241	247	220	253	319
Podiatry	86	128	146	122	119	89	123	116
Preadmission	-	-	-	-	1	-	-	-
Radiation oncology	-	-	-	-	-	-	-	-
Radiotherapy	490	508	481	472	482	485	538	511
Rehabilitation medicine	-	-	-	-	-	-	-	-
Renal	113	95	89	95	118	107	98	94
Respiratory medicine	182	189	241	255	208	249	277	249
Rheumatology	97	105	100	107	110	114	115	105
Scoliosis	-	-	-	-	-	-	-	-
Sexual health	-	-	-	-	-	-	-	-
Spinal	-	-	-	-	-	-	-	-
Thoracic surgery	-	-	-	-	-	-	-	-
Ulcer	-	-	-	-	-	-	-	-
Urology	159	204	191	153	150	202	189	135
Vascular surgery	99	99	117	156	159	105	114	126
Total	6,351	7,306	7,816	7,808	7,410	7,706	8,231	8,001

Table A-24: Quarterly new outpatient appointments by specialty, Sir Charles Gairdner Hospital, March 2011 quarter - March 2012 quarter

	2011				2012			
	Qtr 1	Qtr 2	Qtr 3	Qtr 4	Qtr 1	Qtr 2	Qtr 3	Qtr 4
Adolescent	-	-	-	-	-			
Amputee	-	-	-	-	-			
Anaesthetic	-	-	-	-	-			
Antenatal	-	-	-	-	-			
Breast clinic	624	656	622	596	654			
Burns	-	-	-	-	-			
Cardiology	106	132	136	115	128			
Cardiothoracic	50	64	64	47	59			
Colorectal	-	-	-	-	-			
Colposcopy	-	-	-	-	-			
Dental	-	-	-	-	-			
Dermatology	152	145	191	165	150			
Developmental	-	-	-	-	-			
Diabetic	102	121	126	109	115			
Diabetic education	-	-	-	-	-			
Endocrinology	176	197	188	198	162			
Endoscopy	-	-	-	-	-			
Ear, nose & throat	407	446	640	419	495			
Family planning	-	-	-	-	-			
Fertility	-	-	-	-	-			
Gastroenterology	152	148	171	137	152			
General medicine	81	98	86	60	64			
General surgery	325	269	386	283	256			
Geriatrics	306	257	359	243	318			
Gynaecology	-	-	-	-	-			
Haematology	167	159	184	190	220			
Hepatology	147	118	122	116	139			
Hyperbaric	-	-	-	-	-			
Hypertension	-	-	-	-	-			
Immunology	112	74	91	96	132			
Infectious diseases	12	6	20	17	35			
Menopause	-	-	-	-	-			
Neurogenetic	-	-	-	-	-			
Neurology	207	183	182	201	166			
Neurosurgery	631	611	738	616	560			
Oncology	256	272	255	247	283			
Ophthalmology	355	387	321	477	461			
Oral surgery	-	-	-	-	-			
Orthopaedics	418	549	576	552	522			
Orthopaedics - trauma	-	-	-	-	-			
Osteoporosis	-	-	-	-	-			

WA Outpatient Quarterly Report, March 2012 Quarter

Table A-24: Quarterly new outpatient appointments by specialty, Sir Charles Gairdner Hospital, March 2011 quarter - March 2012 quarter (continued)

	2011				2012			
	Qtr 1	Qtr 2	Qtr 3	Qtr 4	Qtr 1	Qtr 2	Qtr 3	Qtr 4
Paediatric neurology	-	-	-	-	-			
Paediatric surgery	-	-	-	-	-			
Paediatrics	-	-	-	-	-			
Pain	462	498	492	439	403			
Palliative care	26	33	37	45	29			
Plastic dressings	942	992	920	930	882			
Plastic surgery	380	298	322	350	327			
Podiatry	144	79	125	89	134			
Preadmission	2	2	1	7	-			
Radiation oncology	-	-	-	-	-			
Radiotherapy	506	533	497	528	506			
Rehabilitation medicine	-	-	-	-	-			
Renal	109	95	87	103	84			
Respiratory medicine	501	542	601	601	619			
Rheumatology	148	129	133	114	127			
Scoliosis	-	-	-	-	-			
Sexual health	-	-	-	-	-			
Spinal	-	-	-	-	-			
Thoracic surgery	-	-	-	-	-			
Ulcer	-	-	-	-	-			
Urology	123	172	178	143	158			
Vascular surgery	137	132	135	118	104			
Total	8,266	8,397	8,986	8,351	8,444			

Table A-25: Quarterly new outpatient appointments by specialty, Princess Margaret Hospital, March 2007 quarter - December 2008 quarter

	2007				2008			
	Qtr 1	Qtr 2	Qtr 3	Qtr 4	Qtr 1	Qtr 2	Qtr 3	Qtr 4
Adolescent	18	26	27	24	15	26	17	25
Amputee	-	-	-	-	-	-	-	-
Anaesthetic	-	1	-	-	-	-	-	-
Antenatal	-	-	-	-	-	-	-	-
Breast clinic	-	-	-	-	-	-	-	-
Burns	97	76	42	31	37	45	70	43
Cardiology	121	103	115	96	133	107	106	144
Cardiothoracic	-	-	-	-	-	-	-	-
Colorectal	-	-	-	-	-	-	-	-
Colposcopy	-	-	-	-	-	-	-	-
Dental	-	-	-	-	-	-	-	-
Dermatology	141	105	158	114	133	121	132	146
Developmental	82	70	87	63	54	82	107	93
Diabetic	-	-	-	8	-	-	-	1
Diabetic education	-	-	-	-	-	-	-	-
Endocrinology	66	61	62	62	54	69	67	48
Endoscopy	-	-	-	-	-	-	-	-
Ear, nose & throat	380	412	410	458	439	417	427	376
Family planning	-	-	-	-	-	-	-	-
Fertility	-	-	-	-	-	-	-	-
Gastroenterology	94	104	87	76	68	120	91	104
General medicine	322	333	386	315	328	303	294	264
General surgery	317	352	281	302	234	324	315	256
Geriatrics	-	-	-	-	-	-	-	-
Gynaecology	18	19	15	19	20	10	18	8
Haematology	26	21	32	24	31	32	37	35
Hepatology	-	-	-	-	-	-	-	-
Hyperbaric	-	-	-	-	-	-	-	-
Hypertension	-	-	-	-	-	-	-	-
Immunology	162	238	282	222	278	240	197	116
Infectious diseases	-	-	-	-	-	-	-	-
Menopause	-	-	-	-	-	-	-	-
Neurogenetic	-	-	-	-	-	-	-	-
Neurology	77	93	126	93	125	142	131	122
Neurosurgery	10	24	35	33	34	29	27	26
Oncology	39	39	6	17	8	13	11	13
Ophthalmology	141	149	164	157	311	423	388	325
Oral surgery	-	-	-	-	-	-	-	-
Orthopaedics	279	311	337	798	916	1,112	1,043	1,070
Orthopaedics - trauma	-	-	-	-	-	-	-	-
Osteoporosis	-	-	-	-	-	-	-	-

WA Outpatient Quarterly Report, March 2012 Quarter

Table A-25: Quarterly new outpatient appointments by specialty, Princess Margaret Hospital, March 2007 quarter - December 2008 quarter (continued)

	2007				2008			
	Qtr 1	Qtr 2	Qtr 3	Qtr 4	Qtr 1	Qtr 2	Qtr 3	Qtr 4
Paediatric neurology	-	-	-	-	-	-	-	-
Paediatric surgery	-	-	-	-	-	-	-	-
Paediatrics	-	-	-	-	-	-	-	-
Pain	-	-	-	-	-	-	-	-
Palliative care	-	-	-	-	-	-	-	-
Plastic dressings	-	-	-	-	-	-	-	-
Plastic surgery	144	183	152	178	183	705	1,251	1,234
Podiatry	-	-	-	-	-	-	-	-
Preadmission	-	-	-	-	-	-	-	-
Radiation oncology	-	-	-	-	-	-	-	-
Radiotherapy	-	-	-	-	-	-	-	-
Rehabilitation medicine	-	-	-	-	-	-	-	-
Renal	39	62	44	38	37	48	56	31
Respiratory medicine	108	107	142	151	139	125	153	138
Rheumatology	54	40	48	46	42	36	62	50
Scoliosis	-	-	-	-	-	-	-	-
Sexual health	-	-	-	-	-	-	-	-
Spinal	-	-	-	-	-	-	-	-
Thoracic surgery	-	-	-	-	-	-	-	-
Ulcer	-	-	-	-	-	-	-	-
Urology	-	-	-	-	-	-	-	-
Vascular surgery	-	-	-	-	-	-	-	-
Total	2,735	2,929	3,038	3,325	3,619	4,529	5,000	4,668

Table A-26: Quarterly new outpatient appointments by specialty, Princess Margaret Hospital, March 2009 quarter - December 2010 quarter

	2009				2010			
	Qtr 1	Qtr 2	Qtr 3	Qtr 4	Qtr 1	Qtr 2	Qtr 3	Qtr 4
Adolescent	32	30	12	-	-	-	-	-
Amputee	-	-	-	-	-	-	-	-
Anaesthetic	-	-	-	-	-	-	-	-
Antenatal	-	-	-	-	-	-	-	-
Breast clinic	-	-	-	-	-	-	-	-
Burns	62	54	66	65	47	75	60	62
Cardiology	170	174	179	166	164	177	190	192
Cardiothoracic	-	-	20	24	32	33	48	49
Colorectal	-	-	-	-	-	-	-	-
Colposcopy	-	-	-	-	-	-	-	-
Dental	-	-	-	-	-	-	-	-
Dermatology	127	156	186	127	129	112	137	137
Developmental	89	99	96	117	100	103	102	95
Diabetic	-	-	-	-	-	1	-	-
Diabetic education	-	-	-	-	-	-	-	-
Endocrinology	55	63	69	42	50	70	62	41
Endoscopy	-	-	-	-	-	-	-	-
Ear, nose & throat	510	501	466	537	517	523	459	4560
Family planning	-	-	-	-	-	-	-	-
Fertility	-	-	-	-	-	-	-	-
Gastroenterology	97	71	73	67	77	87	71	84
General medicine	310	297	403	315	382	373	368	356
General surgery	298	275	308	267	281	323	331	295
Geriatrics	-	-	-	-	-	-	-	-
Gynaecology	23	36	23	28	26	19	25	21
Haematology	45	43	40	37	49	43	34	34
Hepatology	-	-	-	-	-	-	-	-
Hyperbaric	-	-	-	-	-	-	-	-
Hypertension	-	-	-	-	-	-	-	-
Immunology	226	302	232	203	193	261	295	228
Infectious diseases	-	-	-	-	-	-	-	-
Menopause	-	-	-	-	-	-	-	-
Neurogenetic	-	-	-	-	-	-	-	-
Neurology	160	169	195	131	143	133	133	106
Neurosurgery	31	34	27	21	29	28	31	33
Oncology	12	14	18	10	19	25	11	10
Ophthalmology	372	383	352	327	335	350	377	309
Oral surgery	-	-	-	-	-	-	-	-
Orthopaedics	951	1,243	1,084	1,129	1,181	1,355	1,389	1,208
Orthopaedics - trauma	-	-	-	-	-	-	-	-
Osteoporosis	-	-	-	-	-	-	-	-

WA Outpatient Quarterly Report, March 2012 Quarter

Table A-26: Quarterly new outpatient appointments by specialty, Princess Margaret Hospital, March 2009 quarter - December 2010 quarter (continued)

	2009				2010			
	Qtr 1	Qtr 2	Qtr 3	Qtr 4	Qtr 1	Qtr 2	Qtr 3	Qtr 4
Paediatric neurology	-	-	-	-	-	-	-	-
Paediatric surgery	-	-	-	-	-	-	-	-
Paediatrics	-	-	-	-	-	-	-	-
Pain	-	-	-	-	-	-	-	-
Palliative care	-	-	-	-	-	-	-	-
Plastic dressings	-	-	-	-	-	-	-	-
Plastic surgery	1,100	1,592	1,578	1,432	1,334	1,560	1,727	1,409
Podiatry	-	-	-	-	-	-	-	-
Preadmission	-	-	-	-	-	-	-	-
Radiation oncology	-	-	-	-	-	-	-	-
Radiotherapy	-	-	-	-	-	-	-	-
Rehabilitation medicine	-	-	-	-	-	-	-	-
Renal	34	33	50	57	39	60	42	58
Respiratory medicine	139	148	142	152	123	180	229	203
Rheumatology	70	67	56	73	75	53	104	94
Scoliosis	-	-	-	-	-	-	-	-
Sexual health	-	-	-	-	-	-	-	-
Spinal	-	-	-	-	-	-	-	-
Thoracic surgery	-	-	-	-	-	-	-	-
Ulcer	-	-	-	-	-	-	-	-
Urology	-	-	-	-	-	-	-	-
Vascular surgery	-	-	-	-	-	-	-	-
Total	4,913	5,784	5,675	5,327	5,325	5,944	6,225	5,488

Table A-27: Quarterly new outpatient appointments by specialty, Princess Margaret Hospital, March 2011 quarter - March 2012 quarter

	2011				2012			
	Qtr 1	Qtr 2	Qtr 3	Qtr 4	Qtr 1	Qtr 2	Qtr 3	Qtr 4
Adolescent	-	-	-	-	-			
Amputee	-	-	-	-	-			
Anaesthetic	-	-	-	-	-			
Antenatal	-	-	-	-	-			
Breast clinic	-	-	-	-	-			
Burns	49	51	62	42	36			
Cardiology	174	185	171	169	230			
Cardiothoracic	39	67	40	36	46			
Colorectal	-	-	-	-	-			
Colposcopy	-	-	-	-	-			
Dental	-	-	-	-	-			
Dermatology	179	186	261	219	261			
Developmental	84	92	73	90	64			
Diabetic	1	-	-	1	4			
Diabetic education	-	-	-	-	-			
Endocrinology	74	127	149	132	140			
Endoscopy	-	-	-	-	-			
Ear, nose & throat	417	455	434	426	442			
Family planning	-	-	-	-	-			
Fertility	-	-	-	-	-			
Gastroenterology	72	122	61	57	129			
General medicine	391	390	415	384	431			
General surgery	299	286	318	264	275			
Geriatrics	-	-	-	-	-			
Gynaecology	21	22	21	23	27			
Haematology	48	36	32	48	34			
Hepatology	-	-	-	-	-			
Hyperbaric	-	-	-	-	-			
Hypertension	-	-	-	-	-			
Immunology	302	300	220	239	288			
Infectious diseases	-	-	-	-	-			
Menopause	-	-	-	-	-			
Neurogenetic	-	-	-	-	-			
Neurology	105	132	174	169	234			
Neurosurgery	28	27	30	18	25			
Oncology	6	5	18	15	11			
Ophthalmology	362	343	328	382	392			
Oral surgery	-	-	-	-	-			
Orthopaedics	1,238	1,618	1,314	1,283	1,219			
Orthopaedics - trauma	-	-	-	-	-			
Osteoporosis	-	-	-	-	-			

WA Outpatient Quarterly Report, March 2012 Quarter

Table A-27: Quarterly new outpatient appointments by specialty, Princess Margaret Hospital, March 2011 quarter - March 2012 quarter (continued)

	2011				2012			
	Qtr 1	Qtr 2	Qtr 3	Qtr 4	Qtr 1	Qtr 2	Qtr 3	Qtr 4
Paediatric neurology	-	-	-	-	-			
Paediatric surgery	-	-	-	-	-			
Paediatrics	-	-	-	-	-			
Pain	-	-	-	-	-			
Palliative care	-	-	-	-	-			
Plastic dressings	-	-	-	-	-			
Plastic surgery	568	575	503	486	497			
Podiatry	-	-	-	-	-			
Preadmission	-	-	-	-	-			
Radiation oncology	-	-	-	-	-			
Radiotherapy	-	-	-	-	-			
Rehabilitation medicine	-	-	-	-	-			
Renal	34	35	50	58	47			
Respiratory medicine	166	147	193	157	193			
Rheumatology	65	67	73	86	73			
Scoliosis	-	-	-	-	-			
Sexual health	-	-	-	-	-			
Spinal	-	-	-	-	-			
Thoracic surgery	-	-	-	-	-			
Ulcer	-	-	-	-	-			
Urology	-	-	-	-	-			
Vascular surgery	-	-	-	-	-			
Total	4,722	5,269	4,940	4,784	5,098			

Table A-28: Quarterly new outpatient appointments by specialty, King Edward Memorial Hospital, March 2007 quarter - December 2008 quarter

	2007				2008			
	Qtr 1	Qtr 2	Qtr 3	Qtr 4	Qtr 1	Qtr 2	Qtr 3	Qtr 4
Adolescent	24	26	33	29	30	27	32	32
Amputee	-	-	-	-	-	-	-	-
Anaesthetic	-	-	-	-	-	-	-	-
Antenatal	1,716	1,714	1,753	1,787	1,836	1,713	1,819	1,639
Breast clinic	-	-	-	-	-	-	-	-
Burns	-	-	-	-	-	-	-	-
Cardiology	-	-	-	-	-	-	-	-
Cardiothoracic	-	-	-	-	-	-	-	-
Colorectal	-	-	-	-	-	-	-	-
Colposcopy	247	254	252	269	186	237	250	255
Dental	-	-	-	-	-	-	-	-
Dermatology	-	-	-	-	-	-	-	-
Developmental	-	-	-	-	-	-	-	-
Diabetic	120	112	129	161	178	172	154	127
Diabetic education	-	-	-	-	-	-	-	-
Endocrinology	-	-	-	-	-	-	-	-
Endoscopy	56	53	51	59	63	56	70	61
Ear, nose & throat	-	-	-	-	-	-	-	-
Family planning	37	48	44	39	37	47	49	41
Fertility	97	84	97	73	67	105	92	82
Gastroenterology	-	-	-	-	-	-	-	-
General medicine	-	-	-	-	-	-	-	-
General surgery	-	-	-	-	-	-	-	-
Geriatrics	-	-	-	-	-	-	-	-
Gynaecology	590	580	541	590	543	580	590	569
Haematology	-	-	-	-	-	-	-	-
Hepatology	-	-	-	-	-	-	-	-
Hyperbaric	-	-	-	-	-	-	-	-
Hypertension	-	-	-	-	-	-	-	-
Immunology	-	-	-	-	-	-	-	-
Infectious diseases	-	-	-	-	-	-	-	-
Menopause	87	64	85	78	76	90	95	101
Neurogenetic	-	-	-	-	-	-	-	-
Neurology	-	-	-	-	-	-	-	-
Neurosurgery	-	-	-	-	-	-	-	-
Oncology	110	93	112	107	79	154	190	172
Ophthalmology	-	-	-	-	-	-	-	-
Oral surgery	-	-	-	-	-	-	-	-
Orthopaedics	-	-	-	-	-	-	-	-
Orthopaedics - trauma	-	-	-	-	-	-	-	-
Osteoporosis	-	-	-	-	-	-	-	-

WA Outpatient Quarterly Report, March 2012 Quarter

Table A-28: Quarterly new outpatient appointments by specialty, King Edward Memorial Hospital, March 2007 quarter - December 2008 quarter (continued)

	2007				2008			
	Qtr 1	Qtr 2	Qtr 3	Qtr 4	Qtr 1	Qtr 2	Qtr 3	Qtr 4
Paediatric neurology	-	-	-	-	-	-	-	-
Paediatric surgery	-	-	-	-	-	-	-	-
Paediatrics	99	105	112	106	119	113	109	123
Pain	-	-	-	-	-	-	-	-
Palliative care	-	-	-	-	-	-	-	-
Plastic dressings	-	-	-	-	-	-	-	-
Plastic surgery	-	-	-	-	-	-	-	-
Podiatry	-	-	-	-	-	-	-	-
Preadmission	-	-	-	-	-	-	-	-
Radiation oncology	-	-	-	-	-	-	-	-
Radiotherapy	-	-	-	-	-	-	-	-
Rehabilitation medicine	-	-	-	-	-	-	-	-
Renal	-	-	-	-	-	-	-	-
Respiratory medicine	-	-	-	-	-	-	-	-
Rheumatology	-	-	-	-	-	-	-	-
Scoliosis	-	-	-	-	-	-	-	-
Sexual health	11	26	24	19	18	22	16	29
Spinal	-	-	-	-	-	-	-	-
Thoracic surgery	-	-	-	-	-	-	-	-
Ulcer	-	-	-	-	-	-	-	-
Urology	93	64	55	63	68	80	63	81
Vascular surgery	-	-	-	-	-	-	-	-
Total	3,287	3,223	3,288	3,380	3,300	3,396	3,529	3,312

Table A-29: Quarterly new outpatient appointments by specialty, King Edward Memorial Hospital, March 2009 quarter - December 2010 quarter

	2009				2010			
	Qtr 1	Qtr 2	Qtr 3	Qtr 4	Qtr 1	Qtr 2	Qtr 3	Qtr 4
Adolescent	-	-	-	-	-	-	-	-
Amputee	-	-	-	-	-	-	-	-
Anaesthetic	-	-	-	-	-	-	-	-
Antenatal	2,383	2,455	2,305	2,212	2,123	1,996	2,176	1,899
Breast clinic	-	-	-	-	-	-	-	-
Burns	-	-	-	-	-	-	-	-
Cardiology	-	-	-	-	-	-	-	-
Cardiothoracic	-	-	-	-	-	-	-	-
Colorectal	-	-	-	-	-	-	-	-
Colposcopy	288	367	407	360	377	313	351	292
Dental	-	-	-	-	-	-	-	-
Dermatology	-	-	-	-	-	-	-	-
Developmental	-	-	-	-	-	-	-	-
Diabetic	1	-	-	-	-	-	-	-
Diabetic education	-	-	-	-	-	-	-	-
Endocrinology	-	-	-	-	-	-	-	-
Endoscopy	66	58	72	80	83	61	77	57
Ear, nose & throat	-	-	-	-	-	-	-	-
Family planning	46	47	60	42	42	53	50	50
Fertility	64	79	111	75	80	53	86	63
Gastroenterology	-	-	-	-	-	-	-	-
General medicine	-	-	-	-	-	-	-	-
General surgery	-	-	-	-	-	-	-	-
Geriatrics	-	-	-	-	-	-	-	-
Gynaecology	600	606	596	661	557	553	596	524
Haematology	-	-	-	-	-	-	-	-
Hepatology	-	-	-	-	-	-	-	-
Hyperbaric	-	-	-	-	-	-	-	-
Hypertension	-	-	-	-	-	-	-	-
Immunology	-	-	-	-	-	-	-	-
Infectious diseases	-	-	-	-	-	-	-	-
Menopause	102	94	117	106	93	106	81	74
Neurogenetic	-	-	-	-	-	-	-	-
Neurology	-	-	-	-	-	-	-	-
Neurosurgery	-	-	-	-	-	-	-	-
Oncology	165	130	171	173	129	133	149	132
Ophthalmology	-	-	-	-	-	-	-	-
Oral surgery	-	-	-	-	-	-	-	-
Orthopaedics	-	-	-	-	-	-	-	-
Orthopaedics - trauma	-	-	-	-	-	-	-	-
Osteoporosis	-	-	-	-	-	-	-	-

WA Outpatient Quarterly Report, March 2012 Quarter

Table A-29: Quarterly new outpatient appointments by specialty, King Edward Memorial Hospital, March 2009 quarter - December 2010 quarter (continued)

	2009				2010			
	Qtr 1	Qtr 2	Qtr 3	Qtr 4	Qtr 1	Qtr 2	Qtr 3	Qtr 4
Paediatric neurology	-	-	-	-	-	-	-	-
Paediatric surgery	-	-	-	-	-	-	-	-
Paediatrics	97	122	102	105	108	122	120	102
Pain	-	-	-	-	-	-	-	-
Palliative care	-	-	-	-	-	-	-	-
Plastic dressings	-	-	-	-	-	-	-	-
Plastic surgery	-	-	-	-	-	-	-	-
Podiatry	-	-	-	-	-	-	-	-
Preadmission	-	-	-	-	-	-	-	-
Radiation oncology	-	-	-	-	-	-	-	-
Radiotherapy	-	-	-	-	-	-	-	-
Rehabilitation medicine	-	-	-	-	-	-	-	-
Renal	-	-	-	-	-	-	-	-
Respiratory medicine	-	-	-	-	-	-	-	-
Rheumatology	-	-	-	-	-	-	-	-
Scoliosis	-	-	-	-	-	-	-	-
Sexual health	13	25	23	15	19	34	27	18
Spinal	-	-	-	-	-	-	-	-
Thoracic surgery	-	-	-	-	-	-	-	-
Ulcer	-	-	-	-	-	-	-	-
Urology	64	68	72	81	78	85	86	88
Vascular surgery	-	-	-	-	-	-	-	-
Total	3,889	4,051	4,036	3,910	3,689	3,509	3,799	3,299

Table A-30: Quarterly new outpatient appointments by specialty, King Edward Memorial Hospital, March 2011 quarter - March 2012 quarter

	2011				2012			
	Qtr 1	Qtr 2	Qtr 3	Qtr 4	Qtr 1	Qtr 2	Qtr 3	Qtr 4
Adolescent	-	-	-	-	-			
Amputee	-	-	-	-	-			
Anaesthetic	-	-	-	-	-			
Antenatal	1,935	1,788	1,737	1,704	1,977			
Breast clinic	-	-	-	-	-			
Burns	-	-	-	-	-			
Cardiology	-	-	-	-	-			
Cardiothoracic	-	-	-	-	-			
Colorectal	-	-	-	-	-			
Colposcopy	293	343	318	239	389			
Dental	-	-	-	-	-			
Dermatology	-	-	-	-	-			
Developmental	-	-	-	-	-			
Diabetic	-	-	-	-	-			
Diabetic education	-	-	-	-	-			
Endocrinology	-	-	-	-	-			
Endoscopy	62	68	57	59	62			
Ear, nose & throat	-	-	-	-	-			
Family planning	37	46	44	45	55			
Fertility	63	79	72	91	42			
Gastroenterology	-	-	-	-	-			
General medicine	-	-	-	-	-			
General surgery	-	-	-	-	-			
Geriatrics	-	-	-	-	-			
Gynaecology	464	504	493	469	502			
Haematology	-	-	-	-	-			
Hepatology	-	-	-	-	-			
Hyperbaric	-	-	-	-	-			
Hypertension	-	-	-	-	-			
Immunology	-	-	-	-	-			
Infectious diseases	-	-	-	-	-			
Menopause	64	99	97	89	97			
Neurogenetic	-	-	-	-	-			
Neurology	-	-	-	-	-			
Neurosurgery	-	-	-	-	-			
Oncology	124	141	138	187	156			
Ophthalmology	-	-	-	-	-			
Oral surgery	-	-	-	-	-			
Orthopaedics	-	-	-	-	-			
Orthopaedics - trauma	-	-	-	-	-			
Osteoporosis	-	-	-	-	-			

WA Outpatient Quarterly Report, March 2012 Quarter

Table A-30: Quarterly new outpatient appointments by specialty, King Edward Memorial Hospital, March 2011 quarter - March 2012 quarter (continued)

	2011				2012			
	Qtr 1	Qtr 2	Qtr 3	Qtr 4	Qtr 1	Qtr 2	Qtr 3	Qtr 4
Paediatric neurology	-	-	-	-	-			
Paediatric surgery	-	-	-	-	-			
Paediatrics	86	138	115	120	141			
Pain	-	-	-	-	-			
Palliative care	-	-	-	-	-			
Plastic dressings	-	-	-	-	-			
Plastic surgery	-	-	-	-	-			
Podiatry	-	-	-	-	-			
Preadmission	-	-	-	-	-			
Radiation oncology	-	-	-	-	-			
Radiotherapy	-	-	-	-	-			
Rehabilitation medicine	-	-	-	-	-			
Renal	-	-	-	-	-			
Respiratory medicine	-	-	-	-	-			
Rheumatology	-	-	-	-	-			
Scoliosis	-	-	-	-	-			
Sexual health	24	18	19	19	15			
Spinal	-	-	-	-	-			
Thoracic surgery	-	-	-	-	-			
Ulcer	-	-	-	-	-			
Urology	93	113	128	67	114			
Vascular surgery	-	-	-	-	-			
Total	3,245	3,337	3,218	3,089	3,550			

Notes

Data extraction date

All data in this report is based on appointments to the end of the last day in each month or quarter extracted from the TOPAS data system, a subset of all outpatient appointments.

Data revision

Minor variations for totals published in previous reports are likely to occur as the outpatient databases are continuously updated. Variations may occur for a number of reasons, such as updates to procedure codes, lags in data processing or other types of errors detected after publication.

There is ongoing revision of the data from January 2007 to the current month. Therefore, the most recent edition of a report should always be consulted, as data is not revised in previously published editions.

Data source

The data source is the Non-Admitted Patient Activity and Wait List Data Collection (NAPAAWLDC).

Data exclusion

Counts are based on comparable specialties for both teaching and non teaching hospitals. This means, for example, that some types of appointments, such as physiotherapy are not counted. As the data in this report refers to only medical and surgical outpatient activity, it does not include data related to allied health and diagnostic outpatient services.

Effects of rounding

Where figures have been rounded, discrepancies may occur between sums of the component items and totals. Published percentages are calculated prior to rounding of the figures and therefore some discrepancy may exist between these percentages and those that could be calculated from the rounded figures.

Metropolitan public hospital

The term 'metropolitan public hospital' refers to the public hospitals which are located in the North Metropolitan, South Metropolitan and Child and Adolescent Health Service Areas.

Booked appointment

Due to inconsistencies in the data system that reports and tracks booked appointments for outpatient services, separate data is provided with respect to both first and new appointments.

First appointment

A first appointment refers to an appointment where a patient has never before attended a clinic of that specialty at that hospital.

New appointment

New appointments can have multiple entries, as the appointment recording system allocates a maximum of 45 minutes per appointment. If a further extended appointment is required, this attendance is also recorded as a 'new' appointment until a follow up session is required.

Follow up appointment

A follow up appointment refers to a subsequent appointment and is typically shorter than a new appointment, eg 15 to 20 mins in duration.

Specialty

Outpatient specialties refers to the clinically related provision of services as defined by each hospital.

Definition of appointment

Attendance at an outpatient appointment is based on counts of medical and surgical appointments, as defined in field SB19 in the Outpatient Database.

Teaching hospital

Encompasses the five adult metropolitan teaching hospitals (ie Royal Perth Hospital, Royal Perth Rehabilitation Hospital, Sir Charles Gairdner Hospital, Fremantle Hospital and King Edward Memorial Hospital) and the metropolitan children's hospital (ie Princess Margaret Hospital).