



Outpatient Activity Western Australian Metropolitan Hospitals September 2009 Quarter

© Department of Health, Western Australia

This work is copyright. Apart from any use as permitted under the *Copyright Act 1968*, no part may be reproduced without prior written permission from the Department of Health, Western Australia.

Requests and enquiries concerning reproduction and rights should be directed to -

Performance Reporting Branch
Information Management & Reporting Directorate
Department of Health, Western Australia
PO Box 8172 Perth Business Centre
Western Australia 6849

A list of the Department's publications concerning outpatient activity is available from -
www.health.wa.gov.au/ElectiveSurgery/waitinglist/

ISSN 1836-9677 (print)

Suggested citation

Department of Health, Western Australia.
Outpatient Activity, WA Metropolitan Hospitals: September 2009 Quarter.
Perth: Performance Reporting Branch, Information Management & Reporting Directorate
Department of Health, 2009.

Report produced by

Performance Reporting Branch, Information Management & Reporting Directorate,
Health Information Network, Department of Health

Copies of this publication available at:

www.health.wa.gov.au/ElectiveSurgery/waitinglist/

Table of Contents

Key points	i
List of tables.....	ii
List of figures	iii
Abbreviations.....	iii
Glossary	iii
Symbols	iii
Introduction.....	1
1. Appointments.....	1
1.1 All appointments.....	1
1.2 First appointments.....	1
1.3 New appointments.....	2
1.4 Did not attend.....	2
1.5 Total appointments.....	3
2. Waiting times.....	4
3. Specialty	4
4. Non teaching hospitals.....	5
Appendix tables	A-1
Notes	A-35

Key Points: March 2007 quarter to September 2009 quarter

All appointments

All (ie new and follow up) appointments grew from 124,531 to 147,933 at all metropolitan teaching hospitals, an increase of 18.8%.

New appointments

New appointments grew from 25,554 to 35,919 at all metropolitan teaching hospitals, an increase of 40.6%.

First appointments

First appointments grew from 23,695 to 31,739 at all metropolitan teaching hospitals, an increase of 33.9%.

Total appointments

Total (ie new, follow up and DNA) appointments grew from 146,437 to 172,530 at all metropolitan teaching hospitals, an increase of 17.8%.

Did not attend appointments

Whilst did not attend (DNA) appointments at all teaching hospitals increased from 21,906 to 24,597 over the period, the proportion of DNA appointments of total appointments declined from 15.0% to 14.3%.

Waiting times

Whereas median waiting times to first appointment at all metropolitan hospitals declined by 17.6% (from 34 to 28 days), mean waiting times declined by 12.1% (from 99 to 87 days).

List of Tables

Table 1:	Counts of new, follow up and first outpatient appointments & waiting times for first appointments at all metropolitan teaching hospitals, WA: March 2007 quarter - September 2009 quarter.....	1
Table 2:	Counts of total (new, follow up and DNA appointments at all metropolitan teaching hospitals, WA: March 2007 quarter - September 2009 quarter.....	3
Table 3:	Outpatient appointments at metropolitan teaching & non teaching teaching hospitals, WA: March 2007 quarter - September 2009 quarter	5

List of Figures

Figure 1:	First time outpatient appointments & waiting time (days) at all metropolitan teaching hospitals, WA, March 2007 quarter - September 2009 quarter.....	2
Figure 2:	Attendances by type of outpatient appointment at all metropolitan teaching hospitals, WA, March 2007 quarter - September 2009 quarter	3
Figure 3:	Proportion (%) of DNA outpatient appointments at all metropolitan teaching hospitals, WA, March 2007 quarter - September 2009 quarter	4

Abbreviations

AHS	Area Health Service
AIHW	Australian Institute of Health and Welfare
CAHS	Child and Adolescent Health Service
DNA	Did not attend
FH	Fremantle Hospital
JHC	Joondalup Health Campus
KEMH	King Edward Memorial Hospital
NA	Not available
NMAHS	North Metropolitan Area Health Service Includes: <i>Kalamunda Hospital, King Edward Memorial Hospital, Osborne Park Hospital, Sir Charles Gairdner Hospital and Swan District Hospital.</i>
PEARLS	Patient Electronic Analysis Referral Liaison System
PHC	Peel Health Campus
PMH	Princess Margaret Hospital for Children
qtr	Quarter
RPH	Royal Perth Hospital
RPH SPC	Royal Perth Hospital Shenton Park Campus (also known as RPH Rehabilitation Hospital)
SCGH	Sir Charles Gairdner Hospital
SMAHS	South Metropolitan Area Health Service Includes: <i>Armada-Kelmscott Memorial Hospital, Bentley Hospital, Fremantle Hospital, Kaleeya Hospital, Rockingham General Hospital, Royal Perth Hospital and Royal Perth Rehabilitation Hospital.</i>
TOPAS	The Open Patient Administration System
WA	Western Australia
WACHS	Western Australian Country Health Service

Glossary

Mean: This refers to the arithmetic mean, being the sum of all values in the list divided by the number of items in the list. The mean is the most commonly-used type of average and can also be referred to simply as the average.

Median: This refers to the value separating the higher half of a sample, a population, or a probability distribution, from the lower half. This statistic is used, in preference to the mean, when the distribution of the values is skewed by a small number of very high values.

90th percentile: This refers to the value in the list below which there are 90 percent of numbers and enables waiting times to be expressed as a percentile rank.

However, as percentile ranks are not on equal interval scales, the difference between any two scores is not the same as between any other two scores. For instance, the difference (25) between 90 and 65 is not the same as the difference (25) between 50 and 25 because of the position rank of a percentile is based on an assumed normal distribution of all values.

Symbols

- nil

Introduction

The purpose of this report is to provide summary quarterly data about attendances at outpatient clinics operating at metropolitan teaching hospitals, including Royal Perth Hospital (RPH), RPH Shenton Park Campus (RPHSPC), Sir Charles Gairdner Hospital (SCGH), Fremantle Hospital (FH), King Edward Memorial Hospital (KEMH) and Princess Margaret Hospital (PMH).

In addition to activity at metropolitan teaching hospitals, which accounts for the greatest proportion of outpatient clinics, information is also presented for outpatient clinics undertaken at metropolitan non teaching hospitals based on matched and non matched specialties.

1. Appointments

1.1 All appointments

Up to present quarter

Table 1 indicates that total new and follow up appointments grew by 18.8% from the March 2007 quarter (124,531) to the September 2009 quarter (147,933).

Over last two years

Table 1 also shows that compared with the same quarter two years ago, total new and follow up

appointments grew by 12.7% from the September 2007 quarter (131,221) to the September 2009 quarter (147,933).

Trends by hospital

Trends in new and follow up appointments for each metropolitan teaching hospital are contained in Table A-1 (page A-1).

1.2 First appointments

Due to differences in definition, as noted in the Glossary of terms, separate counts of new and first appointments are provided in Table 1.

First appointments refer to patients who have not previously attended an outpatient clinic, whereas new appointments may include multiple counts for a patient related to attendance at an outpatient clinic.

Up to present quarter

Table 1 indicates that first appointments grew by 33.9% from the March 2007 quarter (23,695) to the September 2009 quarter (31,739). See also Figure 1 (page 2).

Over last two years

Table 1 also shows that compared with the same quarter two years ago, first appointments grew by 21.7% from the September 2007 quarter (26,070) to the September 2009 quarter (31,739).

Table 1: Counts of new, follow up & first outpatient appointments & waiting times for first appointments at all metropolitan teaching hospitals, WA: March 2007 quarter - September 2009 quarter

	Types of appointments				First appointments			
	Follow up	New		All	Waiting time (days)			Count n
		n	%		Median	Mean	90th percentile	
2007								
March qtr	98,977	25,554	20.5	124,531	34	99	195	23,695
June qtr	101,631	26,070	20.4	127,701	31	97	193	23,972
September qtr	104,004	27,217	20.7	131,221	34	102	207	26,070
December qtr	99,217	27,058	21.4	126,275	29	101	198	24,839
2008								
March qtr	99,320	29,006	22.6	128,326	32	100	201	26,326
June qtr	105,421	32,954	23.8	138,375	30	100	211	29,680
September qtr	107,086	33,786	24.0	140,872	29	97	201	29,990
December qtr	105,476	32,093	23.3	137,569	27	86	179	28,593
2009								
March qtr	105,653	33,880	24.3	139,533	29	87	184	30,304
June qtr	108,249	35,511	24.7	143,760	28	92	188	31,331
September qtr	112,014	35,919	24.3	147,933	28	87	180	31,739
December qtr								

Trends by hospital

Trends in first appointments for each metropolitan teaching hospital are contained in Table A-2 (page A-3).

1.3 New appointments

Up to present quarter

Table 1 (page 1) indicates that total new appointments grew by 40.6% from the March 2007 quarter (25,554) to the September 2009 quarter (35,919).

It can also be seen the proportion of new appointments increased from the March 2007 quarter (20.5%) to the September 2009 quarter (24.3%). See also Figure 2 (page 3).

Over last two years

Table 1 (page 1) also shows that compared with the same quarter two years ago, new appointments grew by 32.0% from the September quarter 2007 (27,217) to the September quarter 2009 (35,919).

Trends by hospital

Trends in new appointments for each metropolitan teaching hospital are contained in Table A-1 (page A-1). This data indicates that, overall,

lower proportions of new appointments were reported by RPH and SCGH compared to the other metropolitan teaching hospitals.

1.4 Did not attend

Up to present quarter

Table 2 (page 3) indicates that did not attend (DNA) appointments grew by 12.3% from the March 2007 quarter (21,906) to the September 2009 quarter (24,597).

Figure 3 (page 4) presents trends in the proportion of did not attend (DNA) appointments and total (ie new, follow up and DNA) appointments.

This figure shows that, overall, there was a downward trend in the proportion of DNA appointments, declining from the March 2007 quarter (15.0%) to the September quarter 2009 (14.3%).

Over last two years

Table 2 (page 3) also shows that compared with the same quarter two years ago, DNA appointments increased by 11.5% from the September quarter 2007 (22,064) to the September quarter 2009 (24,597).

Figure 1: First time outpatient appointments & waiting time (days) at all metropolitan teaching hospitals, WA, March 2007 quarter - September 2009 quarter

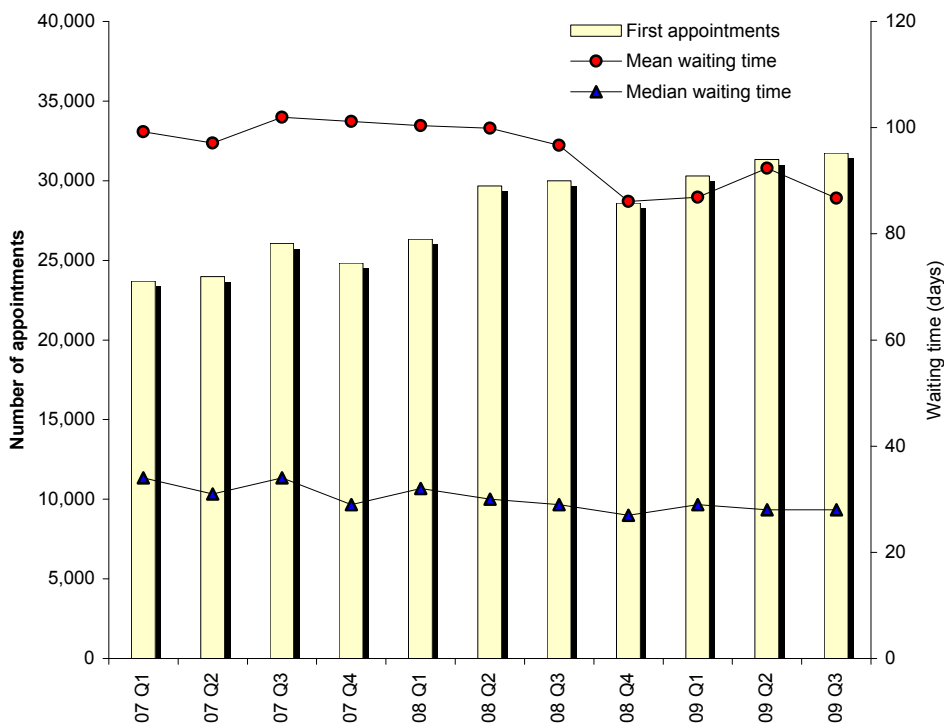


Table 2: Counts of total (new, follow up & DNA) outpatient appointments at all metropolitan teaching hospitals, WA: March 2007 quarter - September 2009 quarter

	Type of appointment		Total appointments
	Did not attend		
	n	%	
2007			
March qtr	21,906	15.0	146,437
June qtr	21,888	14.6	149,589
September qtr	22,064	14.4	153,285
December qtr	21,390	14.5	147,665
2008			
March qtr	21,060	14.1	149,386
June qtr	22,616	14.0	160,991
September qtr	23,398	14.2	164,270
December qtr	22,598	14.1	160,167
2009			
March qtr	23,363	14.3	162,896
June qtr	23,942	14.3	167,702
September qtr	24,597	14.3	172,530
December qtr			

Trends by hospital

Trends in DNA appointments for each metropolitan teaching hospital are contained in Table A-3 (page A-5).

This data indicates that, overall, higher proportions of DNA appointments were reported by RPH, KEMH and PMH compared to the other metropolitan teaching hospitals.

1.5 Total appointments Up to present quarter

Table 2 (page 3) indicates that total (ie new, follow up and DNA) appointments grew by 17.8% from the March 2007 quarter (146,437) to the September 2009 quarter (172,530).

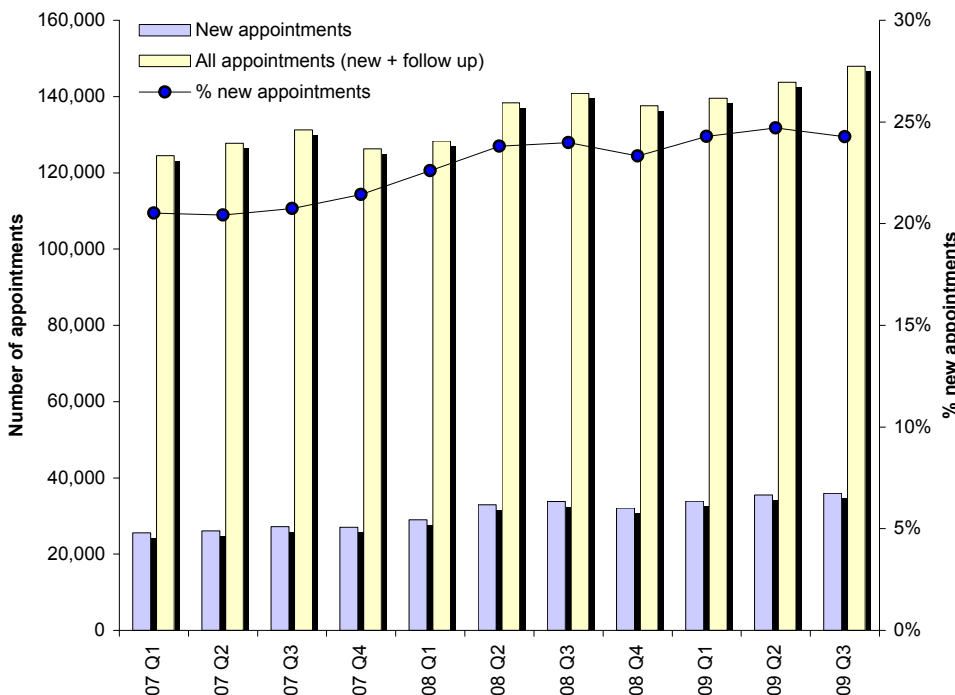
Over last two years

Table 2 also shows that compared with the same quarter two years ago, total appointments grew by 12.6% from the September 2007 quarter (153,285) to the September 2009 quarter (172,530). See also Figure 3 (page 4).

Trends by hospital

Trends in total appointments for each metropolitan teaching hospital are contained in Table A-3 (page A-5).

Figure 2: Attendances by type of outpatient appointment at all metropolitan teaching hospitals, WA, March 2007 quarter - September 2009 quarter



2. Waiting Times

Up to present quarter

Duration of waiting time in days (for median and mean) to first appointment at all metropolitan teaching hospitals are presented in Table 1 (page 1).

Table 1 shows that, overall, median waiting time declined from the March 2007 quarter (34 days) to the September quarter 2009 (28 days). (There was a similar trend in mean waiting time, which decreased from 99 days to 87 days over this period.)

Over last two years

Table 1 (page 1) also shows that compared with the same quarter two years ago, median waiting time decreased by 17.6% from the September 2007 quarter (34 days) to the September 2009 quarter (28 days). See also Figure 1 (page 2).

Trends by hospital

Trends in mean and median waiting time (days) and counts of first appointments for each metropolitan teaching hospital are contained in Table A-2 (page A-3).

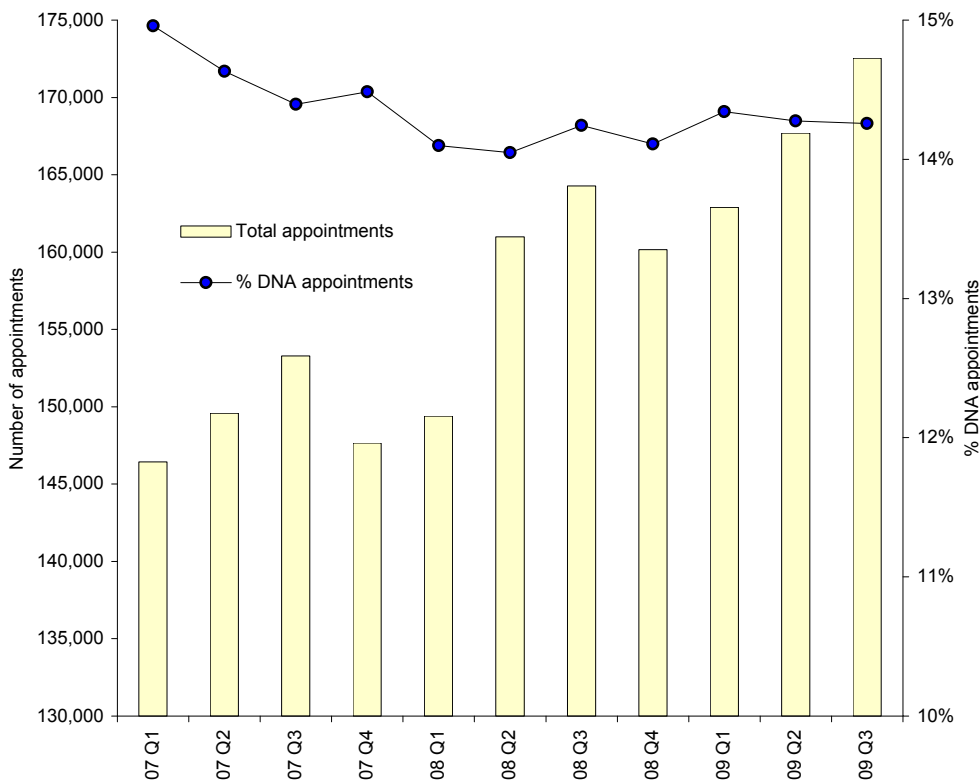
This data indicates that, overall, lower mean and median waiting times were reported by RPH compared to the other metropolitan teaching hospitals.

However, it should be noted that variations between hospitals in waiting times are related to demographic, casemix and other factors.

3. Specialty

A quarterly detailed breakdown of new appointments by specialty for all metropolitan teaching hospitals, as well as for each hospital is contained in Tables A-4 to A-17 (pages A-6 to A-32).

Figure 3: Proportion (%) of DNA outpatient appointments at all metropolitan teaching hospitals, WA, March 2007 quarter- September 2009 quarter



4. Non Teaching Hospitals

The inclusion of data for outpatient clinics at non teaching hospitals involves matching the descriptions of appointments at both teaching and non teaching hospitals.

Separation of matched from non matched outpatient appointments at non teaching hospitals is required to ensure inclusion of comparable data from non teaching hospitals within teaching hospital totals.

Approximately 8% of total outpatient attendances at all metropolitan hospitals occur at non teaching hospitals.

Table 3 (page 5) provides an analysis of outpatient appointments at both teaching and non teaching metropolitan hospitals.

This shows overall at metropolitan non teaching hospitals from the March 2007 quarter to the September 2009 quarter:

- matched appointments grew from 5,082 to 7,504 - an increase of 47.7%;
- non matched appointments increased from 2,373 to 4,884 - a increase of 105.8%; and
- total appointments (ie matched and non matched) grew from 7,455 to 12,388 - an increase of 66.2%.

At teaching and non teaching hospitals from the March 2007 quarter to the September 2009 quarter:

- total matched appointments grew from 129,613 to 155,437 - an increase of 19.9%.

Table 3: Outpatient appointments at metropolitan teaching & non teaching hospitals, WA: March 2007 quarter - September 2009 quarter

	Non teaching hospitals						Teaching hospitals	Total matched appointments
	Matched specialties		Non matched specialties		All specialties			
	New	Total	New	Total	New	Total		
2007								
March qtr	3,464	5,082	1,665	2,373	5,129	7,455	124,531	129,613
June qtr	3,777	5,305	1,349	1,992	5,126	7,297	127,701	133,006
September qtr	4,524	7,580	2,394	3,758	6,918	11,338	131,221	138,801
December qtr	4,444	6,307	2,221	2,868	6,665	9,175	126,275	132,582
2008								
March qtr	4,270	6,355	2,140	2,786	6,410	9,141	128,326	134,681
June qtr	4,753	6,619	2,259	3,031	7,012	9,650	138,375	144,994
September qtr	4,880	6,694	2,328	3,438	7,208	10,132	140,872	147,566
December qtr	4,652	6,541	2,232	3,263	6,884	9,804	137,569	144,110
2009								
March qtr	4,530	6,428	2,952	4,364	7,482	10,792	139,533	145,961
June qtr	4,557	7,012	3,317	4,720	7,874	11,732	143,760	150,772
September qtr	4,697	7,504	3,519	4,884	8,216	12,388	147,933	155,437
December qtr								

Appendix Tables

Table A-1: Attendances by type of outpatient appointment at metropolitan teaching hospitals, WA: March 2007 quarter - September 2009 quarter

	Royal Perth Hospital				Royal Perth Rehabilitation Hospital			
	Follow up	New		Total	Follow up	New		Total
		n	%			n	%	
2007								
March qtr	31,200	7,411	19.2	38,611	3,916	1,538	28.2	5,454
June qtr	30,980	7,523	19.5	38,503	4,014	1,609	28.6	5,623
September qtr	32,515	7,791	19.3	40,306	3,950	1,663	29.6	5,613
December qtr	31,496	7,462	19.2	38,958	3,807	1,547	28.9	5,354
2008								
March qtr	31,980	7,878	19.8	39,858	3,818	1,576	29.2	5,394
June qtr	32,893	8,316	20.2	41,209	3,797	1,749	31.5	5,546
September qtr	33,724	8,543	20.2	42,267	3,564	1,544	30.2	5,108
December qtr	33,658	8,220	19.6	41,878	3,584	1,520	29.8	5,104
2009								
March qtr	34,190	8,439	19.8	42,629	3,765	1,541	29.0	5,306
June qtr	34,565	8,472	19.7	43,037	3,610	1,716	32.2	5,326
September qtr	35,491	8,629	19.6	44,120	3,538	1,708	32.6	5,246
December qtr								

	Sir Charles Gairdner Hospital				Fremantle Hospital			
	Follow up	New		Total	Follow up	New		Total
		n	%			n	%	
2007								
March qtr	25,763	5,808	18.4	31,571	16281	5,003	23.5	21,284
June qtr	27,034	5,797	17.7	32,831	17068	5,238	23.5	22,306
September qtr	27,623	6,416	18.8	34,039	17893	5,281	22.8	23,174
December qtr	25,530	6,716	20.8	32,246	17945	4,885	21.4	22,830
2008								
March qtr	24,775	6,382	20.5	31,157	18078	6,562	26.6	24,640
June qtr	28,284	7,607	21.2	35,891	18911	7,648	28.8	26,559
September qtr	28,833	7,420	20.5	36,253	19018	8,007	29.6	27,025
December qtr	28,953	6,461	18.2	35,414	18724	8,166	30.4	26,890
2009								
March qtr	27,487	6,497	19.1	33,984	19514	8,708	30.9	28,222
June qtr	28,918	7,508	20.6	36,426	20361	8,542	29.6	28,903
September qtr	30,463	8,005	20.8	38,468	20,243	8,009	28.3	28,252
December qtr								

WA Outpatient Quarterly Report, September 2009 Quarter

Table A-1: Attendances by type of outpatient appointment at metropolitan teaching hospitals, WA: March 2007 quarter - September 2009 quarter (continued)

	King Edward Memorial Hospital				Princess Margaret Hospital			
	Follow up	New		Total	Follow up	New		Total
		n	%			n	%	
2007								
March qtr	7,208	3,069	29.9	10,277	14,609	2,725	15.7	17,334
June qtr	7,074	3,006	29.8	10,080	15,461	2,897	15.8	18,358
September qtr	7,000	3,050	30.3	10,050	15,023	3,016	16.7	18,039
December qtr	6,953	3,138	31.1	10,091	13,486	3,310	19.7	16,796
2008								
March qtr	7,098	3,014	29.8	10,112	13,571	3,594	20.9	17,165
June qtr	7,350	3,124	29.8	10,474	14,186	4,510	24.1	18,696
September qtr	7,262	3,283	31.1	10,545	14,685	4,989	25.4	19,674
December qtr	6,888	3,078	30.9	9,966	13,669	4,648	25.4	18,317
2009								
March qtr	6,976	3,809	35.3	10,785	13,721	4,886	26.3	18,607
June qtr	6,861	3,511	33.9	10,372	13,934	5,762	29.3	19,696
September qtr	8,021	3,941	32.9	11,962	14,258	5,627	28.3	19,885
December qtr								

WA Outpatient Quarterly Report, September 2009 Quarter

Table A-2: Waiting times of first time outpatient appointments at metropolitan teaching hospitals, WA: March 2007 quarter - September 2009 quarter

	Royal Perth Hospital				Royal Perth Rehabilitation Hospital			
	First appointments	Waiting time (days)			First time appointments	Waiting time (days)		
		Mean	Median	90th percentile		Mean	Median	90th percentile
2007								
March qtr	6,742	80	18	139	1,392	128	40	299
June qtr	6,743	79	18	143	1,409	116	26	238
September qtr	7,472	78	19	164	1,607	95	26	245
December qtr	6,952	66	14	128	1,424	109	27	246
2008								
March qtr	7,253	68	17	141	1,399	112	38	257
June qtr	7,587	75	18	154	1,556	96	34	238
September qtr	7,777	65	18	141	1,371	86	28	196
December qtr	7,429	59	15	134	1,300	117	37	210
2009								
March qtr	7,604	67	19	153	1,261	107	32	195
June qtr	7,530	67	19	147	1,413	100	35	181
September qtr	7,686	64	17	140	1,395	131	38	237
December qtr								

	Sir Charles Gairdner Hospital				Fremantle Hospital			
	First appointments	Waiting time (days)			First time appointments	Waiting time (days)		
		Mean	Median	90th percentile		Mean	Median	90th percentile
2007								
March qtr	5,397	100	29	224	4,669	102	30	252
June qtr	5,361	99	27	192	4,883	102	30	229
September qtr	6,068	115	28	248	5,039	125	37	293
December qtr	5,739	126	27	275	4,550	125	33	365
2008								
March qtr	5,343	131	33	282	6,050	104	29	241
June qtr	6,468	122	32	274	7,048	109	29	269
September qtr	6,370	126	31	286	7,205	107	31	255
December qtr	5,867	109	28	190	7,266	86	28	178
2009								
March qtr	5,974	100	34	178	7,839	89	28	181
June qtr	6,899	129	31	266	7,625	73	26	148
September qtr	7,353	109	29	241	7,137	71	27	143
December qtr								

WA Outpatient Quarterly Report, September 2009 Quarter

Table A-2: Waiting times of first time outpatient appointments at metropolitan teaching hospitals, WA: March 2007 quarter - September 2009 quarter (continued)

	King Edward Memorial Hospital				Princess Margaret Hospital			
	First time appointments	Waiting time (days)			First time appointments	Waiting time (days)		
		Mean	Median	90th percentile		Mean	Median	90th percentile
2007								
March qtr	2,892	79	57	180	2,603	150	78	219
June qtr	2,815	72	47	166	2,761	145	71	234
September qtr	2,921	74	53	164	2,963	128	78	219
December qtr	2,985	75	49	162	3,189	120	62	206
2008								
March qtr	2,838	79	56	173	3,443	129	73	215
June qtr	2,914	84	55	188	4,107	108	47	208
September qtr	3,083	80	54	173	4,184	109	41	211
December qtr	2,839	82	54	187	3,892	96	36	204
2009								
March qtr	3,494	75	40	191	4,132	105	62	225
June qtr	3,194	82	46	196	4,670	115	43	224
September qtr	3,642	81	50	185	4,526	103	41	223
December qtr								

WA Outpatient Quarterly Report, September 2009 Quarter

Table A-3: Outpatient appointments by type of attendance at metropolitan teaching hospitals, WA: March 2007 quarter - September 2009 quarter

	Royal Perth Hospital			Royal Perth Rehabilitation Hospital		
	Did not attend		Total appointments	Did not attend		Total appointments
	n	%		n	%	
2007						
March qtr	7,923	17.0	46,534	708	11.5	6,162
June qtr	7,956	17.1	46,459	800	12.5	6,423
September qtr	8,133	16.8	48,439	730	11.5	6,343
December qtr	7,464	16.1	46,422	768	12.5	6,122
2008						
March qtr	7,653	16.1	47,511	615	10.2	6,009
June qtr	7,574	15.5	48,783	657	10.6	6,203
September qtr	7,881	15.7	50,148	672	11.6	5,780
December qtr	7,534	15.2	49,412	717	12.3	5,821
2009						
March qtr	7,894	15.6	50,523	719	11.9	6,025
June qtr	7,749	15.3	50,786	714	11.8	6,040
September qtr	7,740	14.9	51,860	724	12.1	5,970
December qtr						

	Sir Charles Gairdner Hospital			Fremantle Hospital		
	Did not attend		Total appointments	Did not attend		Total appointments
	n	%		n	%	
2007						
March qtr	4,509	12.5	36,080	3,442	13.9	24,726
June qtr	4,769	12.7	37,600	3,533	13.7	25,839
September qtr	4,534	11.8	38,573	3,727	13.9	26,901
December qtr	4,493	12.2	36,739	3,505	13.3	26,335
2008						
March qtr	3,982	11.3	35,139	3,651	12.9	28,291
June qtr	4,935	12.1	40,826	4,003	13.1	30,562
September qtr	5,100	12.3	41,353	4,164	13.4	31,189
December qtr	4,822	12.0	40,236	3,902	12.7	30,792
2009						
March qtr	4,586	11.9	38,570	4,018	12.5	32,240
June qtr	4,892	11.8	41,318	4,415	13.3	33,318
September qtr	5,158	11.8	43,626	4,512	13.8	32,764
December qtr						

WA Outpatient Quarterly Report, September 2009 Quarter

Table A-3: Outpatient appointments by type of attendance at metropolitan teaching hospitals, WA: March 2007 quarter - September 2009 quarter (continued)

	King Edward Memorial Hospital			Princess Margaret Hospital		
	Did not attend		Total appointments	Did not attend		Total appointments
	n	%		n	%	
2007						
March qtr	2,265	18.1	12,542	3,059	15.0	20,393
June qtr	2,112	17.3	12,192	2,718	12.9	21,076
September qtr	2,146	17.6	12,196	2,794	13.4	20,833
December qtr	2,096	17.2	12,187	3,064	15.4	19,860
2008						
March qtr	2,065	17.0	12,177	3,094	15.3	20,259
June qtr	2,003	16.1	12,477	3,444	15.6	22,140
September qtr	1,921	15.4	12,466	3,660	15.7	23,334
December qtr	2,046	17.0	12,012	3,577	16.3	21,894
2009						
March qtr	1,807	14.4	12,592	4,339	18.9	22,946
June qtr	1,872	15.3	12,244	4,300	17.9	23,996
September qtr	2,173	15.4	14,135	4,290	17.7	24,175
December qtr						

WA Outpatient Quarterly Report, September 2009 Quarter

Table A-4: Quarterly new outpatient appointments by specialty, WA, Metropolitan summary, March 2007 quarter - December 2008 quarter

	2007				2008			
	Qtr 1	Qtr 2	Qtr 3	Qtr 4	Qtr 1	Qtr 2	Qtr 3	Qtr 4
Adolescent	20	20	29	26	24	23	31	28
Amputee	30	30	29	14	17	16	20	19
Anaesthetic	1	1	0	132	1,682	1,679	1,585	1,768
Antenatal	1,842	1,884	1,923	1,948	1,966	1,858	1,990	1,831
Breast clinic	226	264	311	320	300	310	313	383
Burns	207	199	114	148	161	90	100	52
Cardiology	573	640	584	564	533	555	605	663
Cardiothoracic	52	52	49	56	65	77	65	63
Colorectal	61	70	85	77	65	90	101	96
Colposcopy	226	217	238	244	185	230	237	224
Dental	296	265	265	251	242	231	232	231
Dermatology	549	585	656	576	579	664	776	665
Developmental	77	63	84	61	50	72	98	92
Diabetic	316	319	306	333	309	320	367	352
Diabetic education	264	282	308	237	237	270	241	255
Endocrinology	223	258	283	273	231	290	273	263
Endoscopy	55	48	51	57	61	53	69	61
ENT	1,328	1,255	1,481	1,360	1,255	1,244	1,512	1,282
Family planning	34	45	44	38	31	42	48	39
Fertility	98	83	99	73	69	108	91	78
Gastroenterology	640	643	719	697	709	859	818	722
General medicine	468	478	554	460	473	457	435	370
General surgery	1,027	1,234	1,275	1,167	1,025	1,248	1,289	1,110
Geriatrics	146	138	192	126	146	135	156	118
Gynaecology	673	652	678	703	677	716	771	698
Haematology	409	316	373	409	372	487	445	434
Hepatology	135	132	162	121	147	170	167	146
Hyperbaric	27	32	28	36	32	30	18	26
Immunology	415	507	571	477	543	582	494	402
Infectious diseases	336	363	419	372	349	393	325	328
Menopause	82	62	84	76	75	89	91	98
Neurogenetic	39	37	38	27	38	39	32	32
Neurology	876	806	1,001	775	924	1,109	1,178	1,015
Neurosurgery	357	361	455	477	507	665	642	562
Oncology	629	544	750	789	728	814	922	736
Ophthalmology	1,264	1,408	1,738	1,421	1,618	1,874	1,998	1,907
Oral surgery	19	15	12	22	75	71	85	78
Orthopaedics - trauma	531	569	538	575	603	590	635	681
Orthopaedics	2,134	2,168	1,839	1,982	1,845	2,297	2,209	2,255
Osteoporosis	15	15	14	17	24	27	39	35

WA Outpatient Quarterly Report, September 2009 Quarter

Table A-4: Quarterly new outpatient appointments by specialty, WA, Metropolitan summary, March 2007 quarter - December 2008 quarter (continued)

	2007				2008			
	Qtr 1	Qtr 2	Qtr 3	Qtr 4	Qtr 1	Qtr 2	Qtr 3	Qtr 4
Paediatric neurology	7	5	6	8	7	10	5	5
Paediatric surgery	19	14	14	11	15	20	17	21
Paediatrics	26	37	55	39	37	62	62	66
Pain	280	295	309	566	588	758	709	777
Palliative care	32	36	32	50	52	45	44	32
Plastic dressings	739	670	797	748	613	662	672	710
Plastic surgery	1,162	1,142	1,204	1,131	1,191	1,696	1,794	1,852
Podiatry	259	215	228	191	238	353	209	140
Preadmission	1,217	1,273	1,417	1,227	1,219	1,333	1,328	1,054
Radiation oncology	209	220	248	240	222	223	211	229
Radiotherapy	444	441	492	489	434	482	477	543
Rehabilitation engineering	0	0	3	3	0	0	0	0
Rehabilitation medicine	82	83	90	55	69	62	43	30
Renal	252	306	339	313	324	319	290	275
Respiratory medicine	204	198	236	247	264	263	299	282
Rheumatology	352	294	401	315	298	310	372	367
Scoliosis	19	32	36	57	51	58	54	36
Sexual health	351	320	334	281	404	370	341	349
Spinal	137	135	163	196	206	230	227	204
Thoracic medicine	113	141	130	141	111	166	138	149
Ulcer	39	49	54	55	49	51	53	45
Urology	669	691	717	671	589	954	816	853
Vascular surgery	383	315	386	288	373	379	326	376
Total	23,695	23,972	26,070	24,839	26,326	29,680	29,990	28,593

WA Outpatient Quarterly Report, September 2009 Quarter

Table A-5: Quarterly new outpatient appointments by specialty, WA, Metropolitan summary, March 2009 quarter - September 2009 quarter

	2009				2010			
	Qtr 1	Qtr 2	Qtr 3	Qtr 4	Qtr 1	Qtr 2	Qtr 3	Qtr 4
Adolescent	0	0	0					
Amputee	29	20	23					
Anaesthetic	1,841	1,816	1634					
Antenatal	2,581	2,196	2446					
Breast clinic	331	619	784					
Burns	76	78	175					
Cardiology	693	718	769					
Cardiothoracic	57	57	88					
Colorectal	82	75	74					
Colposcopy	257	313	372					
Dental	259	232	214					
Dermatology	744	712	835					
Developmental	79	87	83					
Diabetic	288	292	347					
Diabetic education	242	305	234					
Endocrinology	258	301	309					
Endoscopy	66	56	71					
ENT	1,576	1,419	1541					
Family planning	44	48	56					
Fertility	63	77	109					
Gastroenterology	763	675	791					
General medicine	436	420	514					
General surgery	1,234	1,224	1237					
Geriatrics	144	117	142					
Gynaecology	769	751	756					
Haematology	464	517	490					
Hepatology	184	196	176					
Hyperbaric	26	30	29					
Immunology	530	605	523					
Infectious diseases	390	350	376					
Menopause	100	88	107					
Neurogenetic	32	57	35					
Neurology	1,082	1,142	1110					
Neurosurgery	520	573	579					
Oncology	705	687	749					
Ophthalmology	1,897	1,906	1880					
Oral surgery	73	69	63					
Orthopaedics - trauma	687	697	723					
Orthopaedics	2,211	2,921	2478					
Osteoporosis	26	21	42					

WA Outpatient Quarterly Report, September 2009 Quarter

Table A-5: Quarterly new outpatient appointments by specialty, WA, Metropolitan summary, March 2009 quarter - September 2009 quarter (continued)

	2009				2010			
	Qtr 1	Qtr 2	Qtr 3	Qtr 4	Qtr 1	Qtr 2	Qtr 3	Qtr 4
Paediatric neurology	8	6	4					
Paediatric surgery	29	20	21					
Paediatrics	87	69	55					
Pain	852	700	657					
Palliative care	58	44	54					
Plastic dressings	634	717	764					
Plastic surgery	1,646	1,947	1768					
Podiatry	187	205	268					
Preadmission	1,128	1,176	1200					
Radiation oncology	214	262	276					
Radiotherapy	488	492	474					
Rehabilitation engineering	0	0	0					
Rehabilitation medicine	51	53	47					
Renal	298	291	305					
Respiratory medicine	302	308	368					
Rheumatology	350	389	361					
Scoliosis	49	65	38					
Sexual health	374	401	401					
Spinal	242	257	229					
Thoracic medicine	139	142	174					
Ulcer	60	50	56					
Urology	886	907	878					
Vascular surgery	383	363	377					
Total	30,304	31,331	31,739					

WA Outpatient Quarterly Report, September 2009 Quarter

Table A-6: Quarterly new outpatient appointments by specialty, Royal Perth Hospital, March 2007 quarter - December 2008 quarter

	2007				2008			
	Qtr 1	Qtr 2	Qtr 3	Qtr 4	Qtr 1	Qtr 2	Qtr 3	Qtr 4
Adolescent	0	0	0	0	0	0	0	0
Amputee	0	0	0	0	0	0	0	0
Anaesthetic	0	0	0	0	0	0	0	0
Antenatal	0	0	0	0	0	0	0	0
Breast clinic	34	32	82	91	88	70	82	104
Burns	115	125	73	119	124	45	30	13
Cardiology	258	320	270	270	230	239	302	282
Cardiothoracic	0	0	0	0	8	5	0	0
Colorectal	61	70	85	77	65	90	101	96
Colposcopy	0	0	0	0	0	0	0	0
Dental	274	256	254	232	219	204	217	219
Dermatology	175	198	240	170	186	194	216	203
Developmental	0	0	0	0	0	0	0	0
Diabetic	200	199	171	205	201	177	186	209
Diabetic education	102	122	136	100	62	82	63	111
Endocrinology	68	82	81	82	74	85	81	100
Endoscopy	0	0	0	0	0	0	0	0
ENT	341	277	366	332	351	338	400	303
Family planning	0	0	0	0	0	0	0	0
Fertility	0	0	0	0	0	0	0	0
Gastroenterology	283	294	358	383	390	387	397	364
General medicine	40	44	56	36	46	31	39	29
General surgery	148	171	196	205	202	208	263	216
Geriatrics	0	0	0	0	0	0	0	0
Gynaecology	0	0	0	0	0	0	0	0
Haematology	209	153	180	186	183	237	206	207
Hepatology	45	38	40	36	37	55	48	50
Hyperbaric	0	0	0	0	0	0	0	0
Immunology	89	74	86	86	86	101	91	92
Infectious diseases	29	30	23	27	22	20	26	28
Menopause	0	0	0	0	0	0	0	0
Neurogenetic	39	37	38	27	38	39	32	32
Neurology	337	318	385	310	342	348	412	341
Neurosurgery	17	18	3	1	2	6	4	5
Oncology	216	169	209	177	205	220	209	241
Ophthalmology	580	670	716	661	687	732	862	829
Oral surgery	0	0	0	0	0	0	0	0
Orthopaedics - trauma	531	569	538	575	603	590	635	681
Orthopaedics	61	105	114	107	105	153	152	114
Osteoporosis	15	15	14	17	24	27	39	35

WA Outpatient Quarterly Report, September 2009 Quarter

Table A-6: Quarterly new outpatient appointments by specialty, Royal Perth Hospital, March 2007 quarter - December 2008 quarter (continued)

	2007				2008			
	Qtr 1	Qtr 2	Qtr 3	Qtr 4	Qtr 1	Qtr 2	Qtr 3	Qtr 4
Paediatric neurology	0	0	0	0	0	0	0	0
Paediatric surgery	0	0	0	0	0	0	0	0
Paediatrics	0	0	0	0	0	0	0	0
Pain	0	0	0	0	0	0	0	0
Palliative care	13	13	12	19	17	14	14	15
Plastic dressings	0	0	0	0	0	0	0	0
Plastic surgery	701	638	716	640	795	864	782	772
Podiatry	66	54	60	55	35	100	48	57
Preadmission	784	777	904	788	798	870	895	718
Radiation oncology	136	142	191	206	163	163	146	160
Radiotherapy	0	0	0	0	0	0	0	0
Rehabilitation engineering	0	0	0	0	0	0	0	0
Rehabilitation medicine	0	0	0	0	0	0	0	0
Renal	53	60	96	83	61	67	68	59
Respiratory medicine	0	0	0	0	0	0	0	0
Rheumatology	80	59	95	71	80	75	93	75
Scoliosis	0	0	0	0	0	0	0	0
Sexual health	341	296	309	262	387	351	326	325
Spinal	0	0	0	0	0	0	0	0
Thoracic medicine	0	0	0	0	0	0	0	0
Ulcer	19	24	28	23	24	21	20	10
Urology	135	168	178	166	147	215	165	157
Vascular surgery	147	126	169	127	166	164	127	177
Total	6,742	6,743	7,472	6,952	7,253	7,587	7,777	7,429

WA Outpatient Quarterly Report, September 2009 Quarter

Table A-7: Quarterly new outpatient appointments by specialty, Royal Perth Hospital, March 2009 quarter - September 2009 quarter

	2009				2010			
	Qtr 1	Qtr 2	Qtr 3	Qtr 4	Qtr 1	Qtr 2	Qtr 3	Qtr 4
Adolescent	0	0	0					
Amputee	0	0	0					
Anaesthetic	0	0	0					
Antenatal	0	0	0					
Breast clinic	79	59	80					
Burns	14	26	109					
Cardiology	303	311	304					
Cardiothoracic	0	0	12					
Colorectal	82	75	74					
Colposcopy	0	0	0					
Dental	241	216	198					
Dermatology	254	215	253					
Developmental	0	0	0					
Diabetic	162	154	199					
Diabetic education	94	62	50					
Endocrinology	77	69	98					
Endoscopy	0	0	0					
ENT	317	244	319					
Family planning	0	0	0					
Fertility	0	0	0					
Gastroenterology	425	367	407					
General medicine	34	36	49					
General surgery	248	197	219					
Geriatrics	0	0	0					
Gynaecology	0	0	0					
Haematology	218	246	218					
Hepatology	49	53	50					
Hyperbaric	0	0	0					
Immunology	92	105	89					
Infectious diseases	32	31	21					
Menopause	0	0	0					
Neurogenetic	32	57	35					
Neurology	440	422	347					
Neurosurgery	15	21	18					
Oncology	181	203	204					
Ophthalmology	840	778	787					
Oral surgery	0	0	0					
Orthopaedics - trauma	687	697	723					
Orthopaedics	96	105	114					
Osteoporosis	26	21	42					

WA Outpatient Quarterly Report, September 2009 Quarter

Table A-7: Quarterly new outpatient appointments by specialty, Royal Perth Hospital, March 2009 quarter - September 2009 quarter (continued)

	2009				2010			
	Qtr 1	Qtr 2	Qtr 3	Qtr 4	Qtr 1	Qtr 2	Qtr 3	Qtr 4
Paediatric neurology	0	0	0					
Paediatric surgery	0	0	0					
Paediatrics	0	0	0					
Pain	0	0	0					
Palliative care	15	13	18					
Plastic dressings	0	0	0					
Plastic surgery	696	708	604					
Podiatry	50	37	62					
Preadmission	780	815	819					
Radiation oncology	162	211	214					
Radiotherapy	0	0	0					
Rehabilitation engineering	0	0	0					
Rehabilitation medicine	0	0	0					
Renal	61	66	67					
Respiratory medicine	0	0	0					
Rheumatology	73	82	74					
Scoliosis	0	0	0					
Sexual health	361	381	379					
Spinal	0	0	0					
Thoracic medicine	0	0	0					
Ulcer	28	27	30					
Urology	185	267	280					
Vascular surgery	155	153	120					
Total	7,604	7,530	7,686					

WA Outpatient Quarterly Report, September 2009 Quarter

Table A-8: Quarterly new outpatient appointments by specialty, Royal Perth Rehabilitation Hospital, March 2007 quarter - December 2008 quarter

	2007				2008			
	Qtr 1	Qtr 2	Qtr 3	Qtr 4	Qtr 1	Qtr 2	Qtr 3	Qtr 4
Adolescent	0	0	0	0	0	0	0	0
Amputee	13	9	13	10	11	11	12	7
Anaesthetic	0	0	0	0	0	0	0	0
Antenatal	0	0	0	0	0	0	0	0
Breast clinic	0	0	0	0	0	0	0	0
Burns	0	0	0	0	0	0	0	0
Cardiology	0	0	0	0	0	0	0	0
Cardiothoracic	0	0	0	0	0	0	0	0
Colorectal	0	0	0	0	0	0	0	0
Colposcopy	0	0	0	0	0	0	0	0
Dental	22	9	11	19	23	27	15	12
Dermatology	0	0	0	0	0	0	0	0
Developmental	0	0	0	0	0	0	0	0
Diabetic	0	0	0	0	0	0	0	0
Diabetic education	0	0	0	0	0	0	0	0
Endocrinology	0	0	0	0	0	0	0	0
Endoscopy	0	0	0	0	0	0	0	0
ENT	0	0	0	0	0	0	0	0
Family planning	0	0	0	0	0	0	0	0
Fertility	0	0	0	0	0	0	0	0
Gastroenterology	0	0	0	0	0	0	0	0
General medicine	0	0	0	0	0	0	0	0
General surgery	0	0	0	0	0	0	0	0
Geriatrics	0	0	0	0	0	0	0	0
Gynaecology	0	0	0	0	0	0	0	0
Haematology	0	0	0	0	0	0	0	0
Hepatology	0	0	0	0	0	0	0	0
Hyperbaric	0	0	0	0	0	0	0	0
Immunology	0	0	0	0	0	0	0	0
Infectious diseases	0	0	0	0	0	0	0	0
Menopause	0	0	0	0	0	0	0	0
Neurogenetic	0	0	0	0	0	0	0	0
Neurology	79	41	77	45	52	67	61	60
Neurosurgery	0	0	0	0	0	0	0	0
Oncology	0	0	0	0	0	0	0	0
Ophthalmology	0	0	0	0	0	0	0	0
Oral surgery	0	0	0	0	0	0	0	0
Orthopaedics - trauma	0	0	0	0	0	0	0	0
Orthopaedics	312	325	314	287	271	284	273	217
Osteoporosis	0	0	0	0	0	0	0	0

WA Outpatient Quarterly Report, September 2009 Quarter

Table A-8: Quarterly new outpatient appointments by specialty, Royal Perth Rehabilitation Hospital, March 2007 quarter - December 2008 quarter (continued)

	2007				2008			
	Qtr 1	Qtr 2	Qtr 3	Qtr 4	Qtr 1	Qtr 2	Qtr 3	Qtr 4
Paediatric neurology	0	0	0	0	0	0	0	0
Paediatric surgery	0	0	0	0	0	0	0	0
Paediatrics	0	0	0	0	0	0	0	0
Pain	80	96	111	102	156	154	112	127
Palliative care	0	0	0	0	0	0	0	0
Plastic dressings	0	0	0	0	0	0	0	0
Plastic surgery	0	0	0	0	0	0	0	0
Podiatry	17	9	12	11	20	28	13	10
Preadmission	422	465	499	417	401	442	424	334
Radiation oncology	0	0	0	0	0	0	0	0
Radiotherapy	0	0	0	0	0	0	0	0
Rehabilitation engineering	0	0	3	3	0	0	0	0
Rehabilitation medicine	82	83	90	55	69	62	43	30
Renal	0	0	0	0	0	0	0	0
Respiratory medicine	0	0	0	0	0	0	0	0
Rheumatology	76	60	125	91	54	50	61	108
Scoliosis	19	32	36	57	51	58	54	36
Sexual health	0	0	0	0	0	0	0	0
Spinal	137	135	163	196	206	230	227	204
Thoracic medicine	0	0	0	0	0	0	0	0
Ulcer	0	0	0	0	0	0	0	0
Urology	133	145	153	131	85	143	76	155
Vascular surgery	0	0	0	0	0	0	0	0
Total	1,392	1,409	1,607	1,424	1,399	1,556	1,371	1,300

WA Outpatient Quarterly Report, September 2009 Quarter

Table A-9: Quarterly new outpatient appointments by specialty, Royal Perth Rehabilitation Hospital, March 2009 quarter - September 2009 quarter

	2009				2010			
	Qtr 1	Qtr 2	Qtr 3	Qtr 4	Qtr 1	Qtr 2	Qtr 3	Qtr 4
Adolescent	0	0	0					
Amputee	8	10	11					
Anaesthetic	0	0	0					
Antenatal	0	0	0					
Breast clinic	0	0	0					
Burns	0	0	0					
Cardiology	0	0	0					
Cardiothoracic	0	0	0					
Colorectal	0	0	0					
Colposcopy	0	0	0					
Dental	18	16	16					
Dermatology	0	0	0					
Developmental	0	0	0					
Diabetic	0	0	0					
Diabetic education	0	0	0					
Endocrinology	0	0	0					
Endoscopy	0	0	0					
ENT	0	0	0					
Family planning	0	0	0					
Fertility	0	0	0					
Gastroenterology	0	0	0					
General medicine	0	0	0					
General surgery	0	0	0					
Geriatrics	0	0	0					
Gynaecology	0	0	0					
Haematology	0	0	0					
Hepatology	0	0	0					
Hyperbaric	0	0	0					
Immunology	0	0	0					
Infectious diseases	0	0	0					
Menopause	0	0	0					
Neurogenetic	0	0	0					
Neurology	52	61	74					
Neurosurgery	0	0	0					
Oncology	0	0	0					
Ophthalmology	0	0	0					
Oral surgery	0	0	0					
Orthopaedics - trauma	0	0	0					
Orthopaedics	174	231	283					
Osteoporosis	0	0	0					

WA Outpatient Quarterly Report, September 2009 Quarter

Table A-9: Quarterly new outpatient appointments by specialty, Royal Perth Rehabilitation Hospital, March 2009 quarter - September 2009 quarter (continued)

	2009				2010			
	Qtr 1	Qtr 2	Qtr 3	Qtr 4	Qtr 1	Qtr 2	Qtr 3	Qtr 4
Paediatric neurology	0	0	0					
Paediatric surgery	0	0	0					
Paediatrics	0	0	0					
Pain	124	136	121					
Palliative care	0	0	0					
Plastic dressings	0	0	0					
Plastic surgery	0	0	0					
Podiatry	11	11	11					
Preadmission	348	361	381					
Radiation oncology	0	0	0					
Radiotherapy	0	0	0					
Rehabilitation engineering	0	0	0					
Rehabilitation medicine	51	53	47					
Renal	0	0	0					
Respiratory medicine	0	0	0					
Rheumatology	55	87	89					
Scoliosis	49	65	38					
Sexual health	0	0	0					
Spinal	242	257	229					
Thoracic medicine	0	0	0					
Ulcer	0	0	0					
Urology	129	125	95					
Vascular surgery	0	0	0					
Total	1,261	1,413	1,395					

WA Outpatient Quarterly Report, September 2009 Quarter

Table A-10: Quarterly new outpatient appointments by specialty, Fremantle Hospital, March 2007 quarter - December 2008 quarter

	2007				2008			
	Qtr 1	Qtr 2	Qtr 3	Qtr 4	Qtr 1	Qtr 2	Qtr 3	Qtr 4
Adolescent	0	0	0	0	0	0	0	0
Amputee	17	21	16	4	6	5	8	12
Anaesthetic	1	0	0	132	1682	1679	1585	1768
Antenatal	239	266	278	250	263	304	308	349
Breast clinic	0	0	0	0	0	0	0	0
Burns	0	0	0	0	0	0	0	0
Cardiology	95	100	88	87	74	99	110	125
Cardiothoracic	52	52	49	56	57	72	65	63
Colorectal	0	0	0	0	0	0	0	0
Colposcopy	0	0	0	0	0	0	0	0
Dental	0	0	0	0	0	0	0	0
Dermatology	137	135	154	139	116	148	215	179
Developmental	0	0	0	0	0	0	0	0
Diabetic	27	28	35	29	18	25	45	36
Diabetic education	162	160	172	137	175	188	178	144
Endocrinology	28	44	49	45	37	48	49	42
Endoscopy	0	0	0	0	0	0	0	0
ENT	262	300	368	263	227	244	407	314
Family planning	0	0	0	0	0	0	0	0
Fertility	0	0	0	0	0	0	0	0
Gastroenterology	195	196	220	188	190	263	250	226
General medicine	61	64	77	67	61	78	62	38
General surgery	255	356	434	378	333	379	367	349
Geriatrics	0	0	0	0	0	0	0	0
Gynaecology	89	84	120	97	132	139	182	134
Haematology	62	50	61	73	61	95	83	82
Hepatology	0	0	0	0	0	0	0	0
Hyperbaric	27	32	28	36	32	30	18	26
Immunology	97	121	107	87	93	131	117	105
Infectious diseases	300	320	382	331	314	358	287	291
Menopause	0	0	0	0	0	0	0	0
Neurogenetic	0	0	0	0	0	0	0	0
Neurology	251	209	256	171	288	389	417	342
Neurosurgery	0	0	0	0	0	0	0	0
Oncology	82	82	74	82	77	77	60	78
Ophthalmology	263	242	475	336	345	410	418	359
Oral surgery	19	15	12	22	75	71	85	78
Orthopaedics - trauma	0	0	0	0	0	0	0	0
Orthopaedics	1180	1173	741	504	390	545	585	629
Osteoporosis	0	0	0	0	0	0	0	0

WA Outpatient Quarterly Report, September 2009 Quarter

Table A-10: Quarterly new outpatient appointments by specialty, Fremantle Hospital, March 2007 quarter - December 2008 quarter (continued)

	2007				2008			
	Qtr 1	Qtr 2	Qtr 3	Qtr 4	Qtr 1	Qtr 2	Qtr 3	Qtr 4
Paediatric neurology	7	5	6	8	7	10	5	5
Paediatric surgery	19	14	14	11	15	20	17	21
Paediatrics	26	37	55	39	37	62	62	66
Pain	26	28	55	307	247	367	364	514
Palliative care	0	0	0	0	0	0	0	0
Plastic dressings	0	0	0	0	0	0	0	0
Plastic surgery	71	73	87	75	68	59	70	150
Podiatry	0	0	0	0	0	0	0	0
Preadmission	0	0	0	0	0	0	0	0
Radiation oncology	73	78	57	34	59	60	65	69
Radiotherapy	0	0	0	0	0	0	0	0
Rehabilitation engineering	0	0	0	0	0	0	0	0
Rehabilitation medicine	0	0	0	0	0	0	0	0
Renal	84	112	107	106	144	93	94	91
Respiratory medicine	0	0	0	0	0	0	0	0
Rheumatology	55	62	46	37	47	66	61	39
Scoliosis	0	0	0	0	0	0	0	0
Sexual health	0	0	0	0	0	0	0	0
Spinal	0	0	0	0	0	0	0	0
Thoracic medicine	57	89	68	90	63	98	81	102
Ulcer	20	25	26	32	25	30	33	35
Urology	205	204	205	204	195	291	335	287
Vascular surgery	125	106	117	93	97	115	117	118
Total	4,669	4,883	5,039	4,550	6,050	7,048	7,205	7,266

WA Outpatient Quarterly Report, September 2009 Quarter

Table A-11: Quarterly new outpatient appointments by specialty, Fremantle Hospital, March 2009 quarter - September 2009 quarter

	2009				2010			
	Qtr 1	Qtr 2	Qtr 3	Qtr 4	Qtr 1	Qtr 2	Qtr 3	Qtr 4
Adolescent	0	0	0					
Amputee	21	10	12					
Anaesthetic	1841	1816	1634					
Antenatal	421	376	358					
Breast clinic	0	0	0					
Burns	0	0	0					
Cardiology	131	136	141					
Cardiothoracic	57	57	57					
Colorectal	0	0	0					
Colposcopy	0	0	0					
Dental	0	0	0					
Dermatology	175	177	197					
Developmental	0	0	0					
Diabetic	37	36	44					
Diabetic education	148	243	184					
Endocrinology	50	63	53					
Endoscopy	0	0	0					
ENT	380	357	444					
Family planning	0	0	0					
Fertility	0	0	0					
Gastroenterology	207	187	220					
General medicine	66	52	34					
General surgery	415	417	421					
Geriatrics	0	0	0					
Gynaecology	172	139	154					
Haematology	67	99	85					
Hepatology	0	0	0					
Hyperbaric	26	30	29					
Immunology	115	111	116					
Infectious diseases	355	309	342					
Menopause	0	0	0					
Neurogenetic	0	0	0					
Neurology	329	368	365					
Neurosurgery	0	0	0					
Oncology	71	68	61					
Ophthalmology	353	406	399					
Oral surgery	73	69	63					
Orthopaedics - trauma	0	0	0					
Orthopaedics	687	742	490					
Osteoporosis	0	0	0					

WA Outpatient Quarterly Report, September 2009 Quarter

Table A-11: Quarterly new outpatient appointments by specialty, Fremantle Hospital, March 2009 quarter - September 2009 quarter (continued)

	2009				2010			
	Qtr 1	Qtr 2	Qtr 3	Qtr 4	Qtr 1	Qtr 2	Qtr 3	Qtr 4
Paediatric neurology	8	6	4					
Paediatric surgery	29	20	21					
Paediatrics	87	69	55					
Pain	567	333	184					
Palliative care	0	0	0					
Plastic dressings	0	0	0					
Plastic surgery	118	194	157					
Podiatry	0	0	0					
Preadmission	0	0	0					
Radiation oncology	52	51	62					
Radiotherapy	0	0	0					
Rehabilitation engineering	0	0	0					
Rehabilitation medicine	0	0	0					
Renal	102	111	105					
Respiratory medicine	0	0	0					
Rheumatology	61	60	56					
Scoliosis	0	0	0					
Sexual health	0	0	0					
Spinal	0	0	0					
Thoracic medicine	89	110	140					
Ulcer	32	23	26					
Urology	362	264	273					
Vascular surgery	135	116	151					
Total	7,839	7,625	7,137					

WA Outpatient Quarterly Report, September 2009 Quarter

Table A-12: Quarterly new outpatient appointments by specialty, Sir Charles Gairdner Hospital, March 2007 quarter - December 2008 quarter

	2007				2008			
	Qtr 1	Qtr 2	Qtr 3	Qtr 4	Qtr 1	Qtr 2	Qtr 3	Qtr 4
Adolescent	0	0	0	0	0	0	0	0
Amputee	0	0	0	0	0	0	0	0
Anaesthetic	0	0	0	0	0	0	0	0
Antenatal	0	0	0	0	0	0	0	0
Breast clinic	192	232	229	229	212	240	231	279
Burns	0	0	0	0	0	0	0	0
Cardiology	100	119	112	116	97	111	91	112
Cardiothoracic	0	0	0	0	0	0	0	0
Colorectal	0	0	0	0	0	0	0	0
Colposcopy	0	0	0	0	0	0	0	0
Dental	0	0	0	0	0	0	0	0
Dermatology	103	153	107	156	151	207	216	144
Developmental	0	0	0	0	0	0	0	0
Diabetic	89	92	100	99	90	118	136	107
Diabetic education	0	0	0	0	0	0	0	0
Endocrinology	63	75	91	87	70	91	81	75
Endoscopy	0	0	0	0	0	0	0	0
ENT	354	291	344	317	256	268	314	323
Family planning	0	0	0	0	0	0	0	0
Fertility	0	0	0	0	0	0	0	0
Gastroenterology	72	54	56	51	63	95	81	32
General medicine	51	54	41	57	44	53	49	47
General surgery	323	367	372	298	272	352	366	318
Geriatrics	146	138	192	126	146	135	156	118
Gynaecology	0	0	0	0	0	0	0	0
Haematology	113	91	100	127	97	124	120	109
Hepatology	90	94	122	85	110	115	119	96
Hyperbaric	0	0	0	0	0	0	0	0
Immunology	71	86	98	86	97	120	97	91
Infectious diseases	7	13	14	14	13	15	12	9
Menopause	0	0	0	0	0	0	0	0
Neurogenetic	0	0	0	0	0	0	0	0
Neurology	136	144	157	156	118	167	169	158
Neurosurgery	330	319	417	445	471	632	611	535
Oncology	190	172	353	407	358	353	459	234
Ophthalmology	290	353	382	270	288	334	350	401
Oral surgery	0	0	0	0	0	0	0	0
Orthopaedics - trauma	0	0	0	0	0	0	0	0
Orthopaedics	310	272	343	310	217	279	249	296
Osteoporosis	0	0	0	0	0	0	0	0

WA Outpatient Quarterly Report, September 2009 Quarter

Table A-12: Quarterly new outpatient appointments by specialty, Sir Charles Gairdner Hospital, March 2007 quarter - December 2008 quarter (continued)

	2007				2008			
	Qtr 1	Qtr 2	Qtr 3	Qtr 4	Qtr 1	Qtr 2	Qtr 3	Qtr 4
Paediatric neurology	0	0	0	0	0	0	0	0
Paediatric surgery	0	0	0	0	0	0	0	0
Paediatrics	0	0	0	0	0	0	0	0
Pain	174	171	143	157	185	237	233	136
Palliative care	19	23	20	31	35	31	30	17
Plastic dressings	739	670	797	748	613	662	672	710
Plastic surgery	255	259	252	242	158	260	256	251
Podiatry	176	152	156	125	183	225	148	73
Preadmission	11	31	14	22	20	21	9	2
Radiation oncology	0	0	0	0	0	0	0	0
Radiotherapy	444	441	492	489	434	482	477	543
Rehabilitation engineering	0	0	0	0	0	0	0	0
Rehabilitation medicine	0	0	0	0	0	0	0	0
Renal	77	75	92	87	82	112	73	95
Respiratory medicine	104	93	97	102	132	147	154	151
Rheumatology	92	76	87	73	78	85	96	100
Scoliosis	0	0	0	0	0	0	0	0
Sexual health	0	0	0	0	0	0	0	0
Spinal	0	0	0	0	0	0	0	0
Thoracic medicine	56	52	62	51	48	68	57	47
Ulcer	0	0	0	0	0	0	0	0
Urology	109	116	126	108	95	229	176	177
Vascular surgery	111	83	100	68	110	100	82	81
Total	5,397	5,361	6,068	5,739	5,343	6,468	6,370	5,867

WA Outpatient Quarterly Report, September 2009 Quarter

Table A-13: Quarterly new outpatient appointments by specialty, Sir Charles Gairdner Hospital, March 2009 quarter - September 2009 quarter

	2009				2010			
	Qtr 1	Qtr 2	Qtr 3	Qtr 4	Qtr 1	Qtr 2	Qtr 3	Qtr 4
Adolescent	0	0	0					
Amputee	0	0	0					
Anaesthetic	0	0	0					
Antenatal	0	0	0					
Breast clinic	252	560	704					
Burns	0	0	0					
Cardiology	93	104	149					
Cardiothoracic	0	0	0					
Colorectal	0	0	0					
Colposcopy	0	0	0					
Dental	0	0	0					
Dermatology	191	170	212					
Developmental	0	0	0					
Diabetic	89	102	104					
Diabetic education	0	0	0					
Endocrinology	79	108	98					
Endoscopy	0	0	0					
ENT	390	345	348					
Family planning	0	0	0					
Fertility	0	0	0					
Gastroenterology	36	52	92					
General medicine	40	45	45					
General surgery	303	360	337					
Geriatrics	144	117	142					
Gynaecology	0	0	0					
Haematology	136	132	150					
Hepatology	135	143	126					
Hyperbaric	0	0	0					
Immunology	103	106	104					
Infectious diseases	3	10	13					
Menopause	0	0	0					
Neurogenetic	0	0	0					
Neurology	112	137	147					
Neurosurgery	474	520	538					
Oncology	281	275	299					
Ophthalmology	350	359	359					
Oral surgery	0	0	0					
Orthopaedics - trauma	0	0	0					
Orthopaedics	388	714	597					
Osteoporosis	0	0	0					

WA Outpatient Quarterly Report, September 2009 Quarter

Table A-13: Quarterly new outpatient appointments by specialty, Sir Charles Gairdner Hospital, March 2009 quarter - September 2009 quarter (continued)

	2009				2010			
	Qtr 1	Qtr 2	Qtr 3	Qtr 4	Qtr 1	Qtr 2	Qtr 3	Qtr 4
Paediatric neurology	0	0	0					
Paediatric surgery	0	0	0					
Paediatrics	0	0	0					
Pain	161	231	352					
Palliative care	43	31	36					
Plastic dressings	634	717	764					
Plastic surgery	253	243	255					
Podiatry	126	157	195					
Preadmission	0	0	0					
Radiation oncology	0	0	0					
Radiotherapy	488	492	474					
Rehabilitation engineering	0	0	0					
Rehabilitation medicine	0	0	0					
Renal	103	84	86					
Respiratory medicine	176	173	235					
Rheumatology	93	98	91					
Scoliosis	0	0	0					
Sexual health	0	0	0					
Spinal	0	0	0					
Thoracic medicine	50	32	34					
Ulcer	0	0	0					
Urology	155	188	161					
Vascular surgery	93	94	106					
Total	5,974	6,899	7,353					

WA Outpatient Quarterly Report, September 2009 Quarter

Table A-14: Quarterly new outpatient appointments by specialty, Princess Margaret Hospital, March 2007 quarter - December 2008 quarter

	2007				2008			
	Qtr 1	Qtr 2	Qtr 3	Qtr 4	Qtr 1	Qtr 2	Qtr 3	Qtr 4
Adolescent	0	0	0	0	0	0	0	0
Amputee	0	0	0	0	0	0	0	0
Anaesthetic	0	1	0	0	0	0	0	0
Antenatal	0	0	0	0	0	0	0	0
Breast clinic	0	0	0	0	0	0	0	0
Burns	92	74	41	29	37	45	70	39
Cardiology	120	101	114	91	132	106	102	144
Cardiothoracic	0	0	0	0	0	0	0	0
Colorectal	0	0	0	0	0	0	0	0
Colposcopy	0	0	0	0	0	0	0	0
Dental	0	0	0	0	0	0	0	0
Dermatology	134	99	155	111	126	115	129	139
Developmental	77	63	84	61	50	72	98	92
Diabetic	0	0	0	0	0	0	0	0
Diabetic education	0	0	0	0	0	0	0	0
Endocrinology	64	57	62	59	50	66	62	46
Endoscopy	0	0	0	0	0	0	0	0
ENT	371	387	403	448	421	394	391	342
Family planning	0	0	0	0	0	0	0	0
Fertility	0	0	0	0	0	0	0	0
Gastroenterology	90	99	85	75	66	114	90	100
General medicine	316	316	380	300	322	295	285	256
General surgery	301	340	273	286	218	309	293	227
Geriatrics	0	0	0	0	0	0	0	0
Gynaecology	17	19	15	19	19	8	17	8
Haematology	25	22	32	23	31	31	36	36
Hepatology	0	0	0	0	0	0	0	0
Hyperbaric	0	0	0	0	0	0	0	0
Immunology	158	226	280	218	267	230	189	114
Infectious diseases	0	0	0	0	0	0	0	0
Menopause	0	0	0	0	0	0	0	0
Neurogenetic	0	0	0	0	0	0	0	0
Neurology	73	94	126	93	124	138	119	114
Neurosurgery	10	24	35	31	34	27	27	22
Oncology	31	30	6	18	8	13	11	11
Ophthalmology	131	143	165	154	298	398	368	318
Oral surgery	0	0	0	0	0	0	0	0
Orthopaedics - trauma	0	0	0	0	0	0	0	0
Orthopaedics	271	293	327	774	862	1036	950	999
Osteoporosis	0	0	0	0	0	0	0	0

Table A-14: Quarterly new outpatient appointments by specialty, Princess Margaret Hospital, March 2007 quarter - December 2008 quarter (continued)

	2007				2008			
	Qtr 1	Qtr 2	Qtr 3	Qtr 4	Qtr 1	Qtr 2	Qtr 3	Qtr 4
Paediatric neurology	0	0	0	0	0	0	0	0
Paediatric surgery	0	0	0	0	0	0	0	0
Paediatrics	0	0	0	0	0	0	0	0
Pain	0	0	0	0	0	0	0	0
Palliative care	0	0	0	0	0	0	0	0
Plastic dressings	0	0	0	0	0	0	0	0
Plastic surgery	135	172	149	174	170	513	686	679
Podiatry	0	0	0	0	0	0	0	0
Preadmission	0	0	0	0	0	0	0	0
Radiation oncology	0	0	0	0	0	0	0	0
Radiotherapy	0	0	0	0	0	0	0	0
Rehabilitation engineering	0	0	0	0	0	0	0	0
Rehabilitation medicine	0	0	0	0	0	0	0	0
Renal	38	59	44	37	37	47	55	30
Respiratory medicine	100	105	139	145	132	116	145	131
Rheumatology	49	37	48	43	39	34	61	45
Scoliosis	0	0	0	0	0	0	0	0
Sexual health	0	0	0	0	0	0	0	0
Spinal	0	0	0	0	0	0	0	0
Thoracic medicine	0	0	0	0	0	0	0	0
Ulcer	0	0	0	0	0	0	0	0
Urology	0	0	0	0	0	0	0	0
Vascular surgery	0	0	0	0	0	0	0	0
Total	2,603	2,761	2,963	3,189	3,443	4,107	4,184	3,892

WA Outpatient Quarterly Report, September 2009 Quarter

Table A-15: Quarterly new outpatient appointments by specialty, Princess Margaret Hospital, March 2009 quarter - September 2009 quarter

	2009				2010			
	Qtr 1	Qtr 2	Qtr 3	Qtr 4	Qtr 1	Qtr 2	Qtr 3	Qtr 4
Adolescent	0	0	0					
Amputee	0	0	0					
Anaesthetic	0	0	0					
Antenatal	0	0	0					
Breast clinic	0	0	0					
Burns	62	52	66					
Cardiology	166	167	175					
Cardiothoracic	0	0	19					
Colorectal	0	0	0					
Colposcopy	0	0	0					
Dental	0	0	0					
Dermatology	124	150	173					
Developmental	79	87	83					
Diabetic	0	0	0					
Diabetic education	0	0	0					
Endocrinology	52	61	60					
Endoscopy	0	0	0					
ENT	489	473	430					
Family planning	0	0	0					
Fertility	0	0	0					
Gastroenterology	95	69	72					
General medicine	296	287	386					
General surgery	268	250	260					
Geriatrics	0	0	0					
Gynaecology	21	31	21					
Haematology	43	40	37					
Hepatology	0	0	0					
Hyperbaric	0	0	0					
Immunology	220	283	214					
Infectious diseases	0	0	0					
Menopause	0	0	0					
Neurogenetic	0	0	0					
Neurology	149	154	177					
Neurosurgery	31	32	23					
Oncology	12	13	18					
Ophthalmology	354	363	335					
Oral surgery	0	0	0					
Orthopaedics - trauma	0	0	0					
Orthopaedics	866	1129	994					
Osteoporosis	0	0	0					

WA Outpatient Quarterly Report, September 2009 Quarter

Table A-15: Quarterly new outpatient appointments by specialty, Princess Margaret Hospital, March 2009 quarter - September 2009 quarter (continued)

	2009				2010			
	Qtr 1	Qtr 2	Qtr 3	Qtr 4	Qtr 1	Qtr 2	Qtr 3	Qtr 4
Paediatric neurology	0	0	0					
Paediatric surgery	0	0	0					
Paediatrics	0	0	0					
Pain	0	0	0					
Palliative care	0	0	0					
Plastic dressings	0	0	0					
Plastic surgery	579	802	752					
Podiatry	0	0	0					
Preadmission	0	0	0					
Radiation oncology	0	0	0					
Radiotherapy	0	0	0					
Rehabilitation engineering	0	0	0					
Rehabilitation medicine	0	0	0					
Renal	32	30	47					
Respiratory medicine	126	135	133					
Rheumatology	68	62	51					
Scoliosis	0	0	0					
Sexual health	0	0	0					
Spinal	0	0	0					
Thoracic medicine	0	0	0					
Ulcer	0	0	0					
Urology	0	0	0					
Vascular surgery	0	0	0					
Total	4,132	4,670	4,526					

WA Outpatient Quarterly Report, September 2009 Quarter

Table A-16: Quarterly new outpatient appointments by specialty, King Edward Memorial Hospital, March 2007 quarter - December 2008 quarter

	2007				2008			
	Qtr 1	Qtr 2	Qtr 3	Qtr 4	Qtr 1	Qtr 2	Qtr 3	Qtr 4
Adolescent	20	20	29	26	24	23	31	28
Amputee	0	0	0	0	0	0	0	0
Anaesthetic	0	0	0	0	0	0	0	0
Antenatal	1603	1618	1645	1698	1703	1554	1682	1482
Breast clinic	0	0	0	0	0	0	0	0
Burns	0	0	0	0	0	0	0	0
Cardiology	0	0	0	0	0	0	0	0
Cardiothoracic	0	0	0	0	0	0	0	0
Colorectal	0	0	0	0	0	0	0	0
Colposcopy	226	217	238	244	185	230	237	224
Dental	0	0	0	0	0	0	0	0
Dermatology	0	0	0	0	0	0	0	0
Developmental	0	0	0	0	0	0	0	0
Diabetic	0	0	0	0	0	0	0	0
Diabetic education	0	0	0	0	0	0	0	0
Endocrinology	0	0	0	0	0	0	0	0
Endoscopy	55	48	51	57	61	53	69	61
ENT	0	0	0	0	0	0	0	0
Family planning	34	45	44	38	31	42	48	39
Fertility	98	83	99	73	69	108	91	78
Gastroenterology	0	0	0	0	0	0	0	0
General medicine	0	0	0	0	0	0	0	0
General surgery	0	0	0	0	0	0	0	0
Geriatrics	0	0	0	0	0	0	0	0
Gynaecology	567	549	543	587	526	569	572	556
Haematology	0	0	0	0	0	0	0	0
Hepatology	0	0	0	0	0	0	0	0
Hyperbaric	0	0	0	0	0	0	0	0
Immunology	0	0	0	0	0	0	0	0
Infectious diseases	0	0	0	0	0	0	0	0
Menopause	82	62	84	76	75	89	91	98
Neurogenetic	0	0	0	0	0	0	0	0
Neurology	0	0	0	0	0	0	0	0
Neurosurgery	0	0	0	0	0	0	0	0
Oncology	110	91	108	105	80	151	183	172
Ophthalmology	0	0	0	0	0	0	0	0
Oral surgery	0	0	0	0	0	0	0	0
Orthopaedics - trauma	0	0	0	0	0	0	0	0
Orthopaedics	0	0	0	0	0	0	0	0
Osteoporosis	0	0	0	0	0	0	0	0

Table A-16: Quarterly new outpatient appointments by specialty, King Edward Memorial Hospital, March 2007 quarter - December 2008 quarter (continued)

	2007				2008			
	Qtr 1	Qtr 2	Qtr 3	Qtr 4	Qtr 1	Qtr 2	Qtr 3	Qtr 4
Paediatric neurology	0	0	0	0	0	0	0	0
Paediatric surgery	0	0	0	0	0	0	0	0
Paediatrics	0	0	0	0	0	0	0	0
Pain	0	0	0	0	0	0	0	0
Palliative care	0	0	0	0	0	0	0	0
Plastic dressings	0	0	0	0	0	0	0	0
Plastic surgery	0	0	0	0	0	0	0	0
Podiatry	0	0	0	0	0	0	0	0
Preadmission	0	0	0	0	0	0	0	0
Radiation oncology	0	0	0	0	0	0	0	0
Radiotherapy	0	0	0	0	0	0	0	0
Rehabilitation engineering	0	0	0	0	0	0	0	0
Rehabilitation medicine	0	0	0	0	0	0	0	0
Renal	0	0	0	0	0	0	0	0
Respiratory medicine	0	0	0	0	0	0	0	0
Rheumatology	0	0	0	0	0	0	0	0
Scoliosis	0	0	0	0	0	0	0	0
Sexual health	10	24	25	19	17	19	15	24
Spinal	0	0	0	0	0	0	0	0
Thoracic medicine	0	0	0	0	0	0	0	0
Ulcer	0	0	0	0	0	0	0	0
Urology	87	58	55	62	67	76	64	77
Vascular surgery	0	0	0	0	0	0	0	0
Total	2,892	2,815	2,921	2,985	2,838	2,914	3,083	2,839

WA Outpatient Quarterly Report, September 2009 Quarter

Table A-17: Quarterly new outpatient appointments by specialty, King Edward Memorial Hospital, March 2009 quarter - September 2009 quarter

	2009				2010			
	Qtr 1	Qtr 2	Qtr 3	Qtr 4	Qtr 1	Qtr 2	Qtr 3	Qtr 4
Adolescent	0	0	0					
Amputee	0	0	0					
Anaesthetic	0	0	0					
Antenatal	2160	1820	2088					
Breast clinic	0	0	0					
Burns	0	0	0					
Cardiology	0	0	0					
Cardiothoracic	0	0	0					
Colorectal	0	0	0					
Colposcopy	257	313	372					
Dental	0	0	0					
Dermatology	0	0	0					
Developmental	0	0	0					
Diabetic	0	0	0					
Diabetic education	0	0	0					
Endocrinology	0	0	0					
Endoscopy	66	56	71					
ENT	0	0	0					
Family planning	44	48	56					
Fertility	63	77	109					
Gastroenterology	0	0	0					
General medicine	0	0	0					
General surgery	0	0	0					
Geriatrics	0	0	0					
Gynaecology	576	581	581					
Haematology	0	0	0					
Hepatology	0	0	0					
Hyperbaric	0	0	0					
Immunology	0	0	0					
Infectious diseases	0	0	0					
Menopause	100	88	107					
Neurogenetic	0	0	0					
Neurology	0	0	0					
Neurosurgery	0	0	0					
Oncology	160	128	167					
Ophthalmology	0	0	0					
Oral surgery	0	0	0					
Orthopaedics - trauma	0	0	0					
Orthopaedics	0	0	0					
Osteoporosis	0	0	0					

WA Outpatient Quarterly Report, September 2009 Quarter

Table A-17: Quarterly new outpatient appointments by specialty, King Edward Memorial Hospital, March 2009 quarter - September 2009 quarter (continued)

	2009				2010			
	Qtr 1	Qtr 2	Qtr 3	Qtr 4	Qtr 1	Qtr 2	Qtr 3	Qtr 4
Paediatric neurology	0	0	0					
Paediatric surgery	0	0	0					
Paediatrics	0	0	0					
Pain	0	0	0					
Palliative care	0	0	0					
Plastic dressings	0	0	0					
Plastic surgery	0	0	0					
Podiatry	0	0	0					
Preadmission	0	0	0					
Radiation oncology	0	0	0					
Radiotherapy	0	0	0					
Rehabilitation engineering	0	0	0					
Rehabilitation medicine	0	0	0					
Renal	0	0	0					
Respiratory medicine	0	0	0					
Rheumatology	0	0	0					
Scoliosis	0	0	0					
Sexual health	13	20	22					
Spinal	0	0	0					
Thoracic medicine	0	0	0					
Ulcer	0	0	0					
Urology	55	63	69					
Vascular surgery	0	0	0					
Total	3,494	3,194	3,642					

Notes

Data extraction date

All data in this report is based on appointments to the end of the last day in each month or quarter extracted from the TOPAS data system, a subset of all outpatient appointments.

Data revision

Minor variations for totals published in previous reports are likely to occur as the outpatient databases are continuously updated. Variations may occur for a number of reasons, such as updates to procedure codes, lags in data processing or other types of errors detected after publication.

Therefore, the most recent edition of a report should always be consulted, as data is not revised in previously published editions of a report.

Data exclusion

Counts are based on comparable specialties for both teaching and non teaching hospitals. This means, for example, that some types of appointments, such as physiotherapy are not counted. As the data in this report refers to only medical and surgical outpatient activity, it does not include data related to allied health and diagnostic outpatient services.

Metropolitan public hospitals

The term 'metropolitan public hospital' refers to the public hospitals which are located in the North Metropolitan and South Metropolitan Area Health Services.

Booked appointments

Due to inconsistencies in the data system that reports and tracks booked appointments for outpatient services, separate data is provided with respect to both first and new appointments.

First appointment

A first appointment refers to an appointment where a patient has never before attended a clinic of that specialty at that hospital.

New appointment

New appointments can have multiple entries, as the appointment recording system allocates a maximum of 45 minutes per appointment. If a further extended appointment is required, this attendance is also recorded as a 'new' appointment until a follow up session is required.

Follow up appointment

A follow up appointment refers to a subsequent appointment and is typically shorter than a new appointment, eg 15 to 20 mins in duration.

Specialty

The list of outpatient specialties refers to clinically related provision of services as defined by each hospital.

Definition of appointment

Attendance at an outpatient appointment is based on counts of medical and surgical appointments, as defined in field SB19 in the Outpatient Database.

Teaching hospital

Encompasses the five adult metropolitan teaching hospitals (ie Royal Perth Hospital, Royal Perth Hospital Shenton Campus, Sir Charles Gairdner Hospital, Fremantle Hospital and King Edward Memorial Hospital) and the metropolitan children's hospital (ie Princess Margaret Hospital).