



# Outpatient Activity Western Australian Metropolitan Hospitals June 2009 Quarter

© Department of Health, Western Australia

This work is copyright. Apart from any use as permitted under the *Copyright Act 1968*, no part may be reproduced without prior written permission from the Department of Health, Western Australia.

Requests and enquiries concerning reproduction and rights should be directed to -

Performance Reporting Branch  
Information Management & Reporting Directorate  
Department of Health, Western Australia  
PO Box 8172 Perth Business Centre  
Western Australia 6849

A list of the Department's publications concerning outpatient activity is available from -  
[www.health.wa.gov.au/ElectiveSurgery/waitinglist/](http://www.health.wa.gov.au/ElectiveSurgery/waitinglist/)

ISSN 1836-9677 (print)

#### **Suggested citation**

Department of Health, Western Australia.  
*Outpatient Activity, WA Metropolitan Hospitals: June 2009 Quarter.*  
Perth: Performance Reporting Branch, Information Management & Reporting Directorate  
Department of Health, 2009.

#### **Report produced by**

Performance Reporting Branch, Information Management & Reporting Directorate,  
Health Information Network, Department of Health

Copies of this publication available at:

[www.health.wa.gov.au/ElectiveSurgery/waitinglist/](http://www.health.wa.gov.au/ElectiveSurgery/waitinglist/)

---

# Table of Contents

Key Points .....	i
List of tables.....	ii
List of figures .....	ii
Abbreviations .....	iii
Glossary .....	iii
Symbols .....	iii
Introduction.....	1
1. Appointments.....	1
2. Waiting times.....	1
3. New appointments.....	2
4. Did Not Attend .....	3
5. Specialty .....	4
6. Non teaching hospitals.....	4
Appendix tables .....	A-1
Notes .....	A-25

## Key Points: March 2007 quarter to June 2009 quarter

### Activity

Quarterly attendances grew from 124,531 to 142,624 at all metropolitan teaching hospitals, an increase of 14.5%.

### Waiting times

Overall, mean quarterly waiting times at all metropolitan hospitals for first appointments declined from 99 days to 92 days, a reduction of 7.1%.

Over this period, mean quarterly waiting times for first appointments:

- increased by 27.0% at Sir Charles Gairdner Hospital - from 100 days to 127 days;
- decreased by 17.5% at Royal Perth Hospital - from 80 to 66 days;
- decreased by 29.4% at Fremantle Hospital - from 102 to 72 days.
- decreased by 22.7% at Royal Perth Rehabilitation Hospital - from 128 to 99 days;
- decreased by 24.0% at Princess Margaret Hospital - from 150 days to 114 days; and
- increased by 10.1% at King Edward Memorial Hospital - from 79 to 87 days.

### New appointments

Quarterly new appointments grew from 25,554 to 35,143 at all metropolitan teaching hospitals, an increase of 37.5%.

The quarterly proportion of all appointments that were new increased from 20.5% to 24.6%.

### Did not attend appointments

The quarterly proportion of did not attend (DNA) appointments at all teaching hospitals declined from 15.0% to 14.3%.

---

## List of Tables

Table 1:	Types of outpatient appointments & waiting times for first appointments at all metropolitan teaching hospitals, WA: March 2007 quarter - June 2009 quarter .....	1
Table 2:	Attendances by type of outpatient appointment at all metropolitan teaching hospitals, WA: March 2007 quarter - June 2009 quarter .....	3
Table 3:	Outpatient appointments by type of attendance at all metropolitan teaching hospitals, WA: March 2007 quarter - June 2009 quarter .....	4
Table 4:	Outpatient attendances at metropolitan teaching & non teaching teaching hospitals, WA: March 2007 quarter - June 2009 quarter .....	5

## List of Figures

Figure 1:	First time monthly outpatient appointments & waiting time (days) at all metropolitan teaching hospitals, WA, January 2007 - June 2009 .....	2
Figure 2:	Attendances by type of outpatient appointment at all metropolitan teaching hospitals, WA, March 2007 quarter - June 2009 quarter .....	3
Figure 3:	Proportion (%) of DNA outpatient appointments at all metropolitan teaching hospitals, WA, March 2007 quarter- June 2009 quarter .....	4

---

## Abbreviations

AHS	Area Health Service
AIHW	Australian Institute of Health and Welfare
CAHS	Child and Adolescent Health Service
DNA	Did not attend
FH	Fremantle Hospital
JHC	Joondalup Health Campus
KEMH	King Edward Memorial Hospital
NA	Not available
NMAHS	North Metropolitan Area Health Service Includes: <i>Kalamunda Hospital, King Edward Memorial Hospital, Osborne Park Hospital, Sir Charles Gairdner Hospital and Swan District Hospital.</i>
PEARLS	Patient Electronic Analysis Referral Liaison System
PHC	Peel Health Campus
PMH	Princess Margaret Hospital for Children
qtr	Quarter
RPH	Royal Perth Hospital
RPH SPC	Royal Perth Hospital Shenton Park Campus (also known as RPH Rehabilitation Hospital)
SCGH	Sir Charles Gairdner Hospital
SMAHS	South Metropolitan Area Health Service Includes: <i>Armada-Kelmscott Memorial Hospital, Bentley Hospital, Fremantle Hospital, Kaleeya Hospital, Rockingham General Hospital, Royal Perth Hospital and Royal Perth Rehabilitation Hospital.</i>
TOPAS	The Open Patient Administration System
WA	Western Australia
WACHS	Western Australian Country Health Service

## Glossary

**Mean:** This refers to the arithmetic mean, being the sum of all values in the list divided by the number of items in the list. The mean is the most commonly-used type of average and can also be referred to simply as the average.

**Median:** This refers to the value separating the higher half of a sample, a population, or a probability distribution, from the lower half. This statistic is used, in preference to the mean, when the distribution of the values is skewed by a small number of very high values.

**90th percentile:** This refers to the value in the list below which there are 90 percent of numbers and enables waiting times to be expressed as a percentile rank.

However, as percentile ranks are not on equal interval scales, the difference between any two scores is not the same as between any other two scores. For instance, the difference (25) between 90 and 65 is not the same as the difference (25) between 50 and 25 because of the position rank of a percentile is based on an assumed normal distribution of all values.

## Symbols

- nil

## Introduction

The main purpose of this report is to provide summary information about attendances at outpatient clinics operating at metropolitan teaching hospitals, including Royal Perth Hospital (RPH), RPH Shenton Park Campus (RPHSPC), Sir Charles Gairdner Hospital (SCGH), Fremantle Hospital (FH), King Edward Memorial Hospital (KEMH) and Princess Margaret Hospital (PMH).

In addition to activity at metropolitan teaching hospitals, which accounts for the greatest proportion of outpatient clinics, information is also presented for outpatient clinics undertaken at metropolitan non teaching hospitals.

## 1. Appointments

Table 1 indicates that the total number of all quarterly appointments grew by 14.5% from the March 2007 quarter (124,531) to the June 2009 quarter (142,624).

Due to differences in definition, as noted in the Glossary of terms, separate counts of new and first appointments are provided in Table 1.

First appointments refer to patients who have not previously attended an outpatient clinic, whereas

new appointments may include multiple counts for a patient related to attendance at an outpatient clinic.

Table 1 also shows that compared with the same quarter two years ago, quarterly first appointments grew, from 23,972 (June 2007 quarter) to 30,693 - an increase of 28.0%.

## 2. Waiting Times

Monthly attendances and duration of waiting time in days (for median and mean) for first appointments at all metropolitan teaching hospitals are presented in Figure 1 (page 2). See Table A-1, page A-1.

Figure 1 shows that, overall, median monthly waiting time declined from January 2007 (36 days) to June 2009 (27 days). There was a similar trend in mean waiting time, which fell from 100 days to 88 days over this period.

Figure 1 also shows the impact of the Christmas holiday period in December and January on appointments and waiting times.

Table 1 (page 1) provides a quarterly breakdown of duration of waiting time from the March 2007 quarter up to the present for first appointments.

**Table 1: Types of outpatient appointments & waiting times for first appointments at all metropolitan teaching hospitals, WA: March 2007 quarter - June 2009 quarter**

	All types of appointments			First appointments			
	Follow up	New	Total	Waiting time (days)			Count
				Mean	Median	90th percentile	n
<b>2007</b>							
March qtr	98,977	25,554	124,531	99	34	195	23,695
June qtr	101,631	26,070	127,701	97	31	193	23,972
September qtr	104,007	27,216	131,223	94	32	184	24,708
December qtr	99,223	27,058	126,281	97	29	184	24,161
<b>2008</b>							
March qtr	99,322	29,000	128,322	98	31	193	25,870
June qtr	105,412	32,950	138,362	98	29	206	29,161
September qtr	107,048	33,778	140,826	96	29	198	29,597
December qtr	105,352	32,075	137,427	85	27	178	28,179
<b>2009</b>							
March qtr	105,321	33,317	138,638	86	30	185	29,410
June qtr	107,481	35,143	142,624	92	28	188	30,693
September qtr							
December qtr							

Trends in monthly mean and median waiting time (days) for each metropolitan teaching hospital are contained in Table A-2 (page A-2).

This data indicates that, overall, both lower mean and median waiting times were reported by RPH compared to the other metropolitan teaching hospitals.

However, it should be noted that variations between hospitals in waiting times are related to demographic, casemix and other factors.

Table A-3 (pages A-3 to A-4) provides a quarterly breakdown by each hospital for:

- number of first appointments; and
- duration of waiting time for the mean, median and 90th percentile number of days to first appointment.

### 3. New Appointments

Figure 2 (page 3) presents trends in quarterly attendances for both new and all appointments (ie new plus follow up appointments) at all metropolitan teaching hospitals.

This shows that the proportion of attendances that were new appointments increased from the March 2007 quarter (20.5%) to the June 2009 quarter (24.6%).

Table 2 (page 3) shows that compared with the same quarter two years ago, total new appointments grew from 26,070 (June 2007 quarter) to 35,143 - an increase of 34.8%.

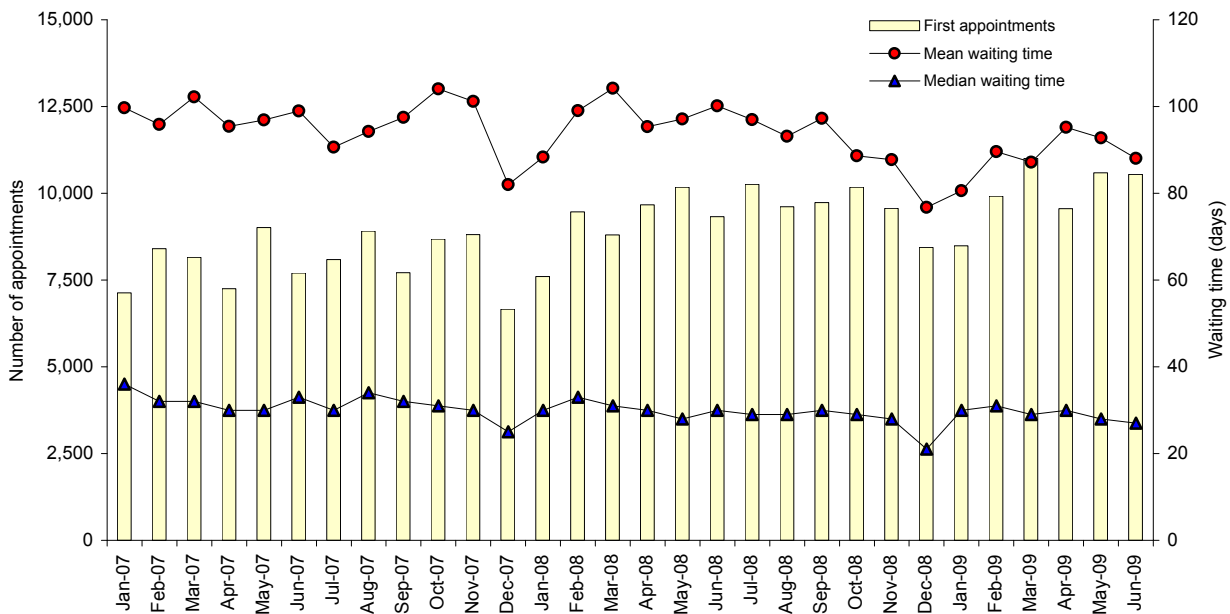
Trends in monthly proportions of new appointments for each metropolitan teaching hospital are contained in Table A-4 (page A-5).

This data indicates that, overall, lower proportions of new appointments were reported by RPH and SCGH compared to the other metropolitan teaching hospitals.

As already noted, variations between hospitals in waiting times are related to demographic, casemix and other factors.

Table A-5 (pages A-6 to A-7) provides a quarterly breakdown by each hospital for the number of follow up and new appointments.

**Figure 1: First time monthly outpatient appointments & waiting time (days) at all metropolitan teaching hospitals, WA, January 2007 - June 2009**



## 4. Did Not Attend

Figure 3 (page 4) presents quarterly trends for all appointments (ie new and follow up) and those recorded as a did not attend (DNA) appointment.

**Table 2: Attendances by type of outpatient appointment at all metropolitan teaching hospitals, WA: March 2007 quarter - June 2009 quarter**

	Type of appointment			Total
	Follow up	New		
		n	%	
<b>2007</b>				
March qtr	98,977	25,554	20.5	124,531
June qtr	101,631	26,070	20.4	127,701
September qtr	104,007	27,216	20.7	131,223
December qtr	99,223	27,058	21.4	126,281
<b>2008</b>				
March qtr	99,322	29,000	22.6	128,322
June qtr	105,412	32,950	23.8	138,362
September qtr	107,048	33,778	24.0	140,826
December qtr	105,352	32,075	23.3	137,427
<b>2009</b>				
March qtr	105,321	33,317	24.0	138,638
June qtr	107,481	35,143	24.6	142,624
September qtr				
December qtr				

Figure 3 shows that, overall, there was a downward trend in the proportion of all appointments that were a DNA appointment, declining from the March 2007 quarter (15.0%) to the June quarter 2009 (14.3%).

Table 3 (page 4) shows that compared with the same quarter two years ago, all appointments, including DNA appointments, grew from 149,589 (June 2007 quarter) to 166,345 - an increase of 11.2%.

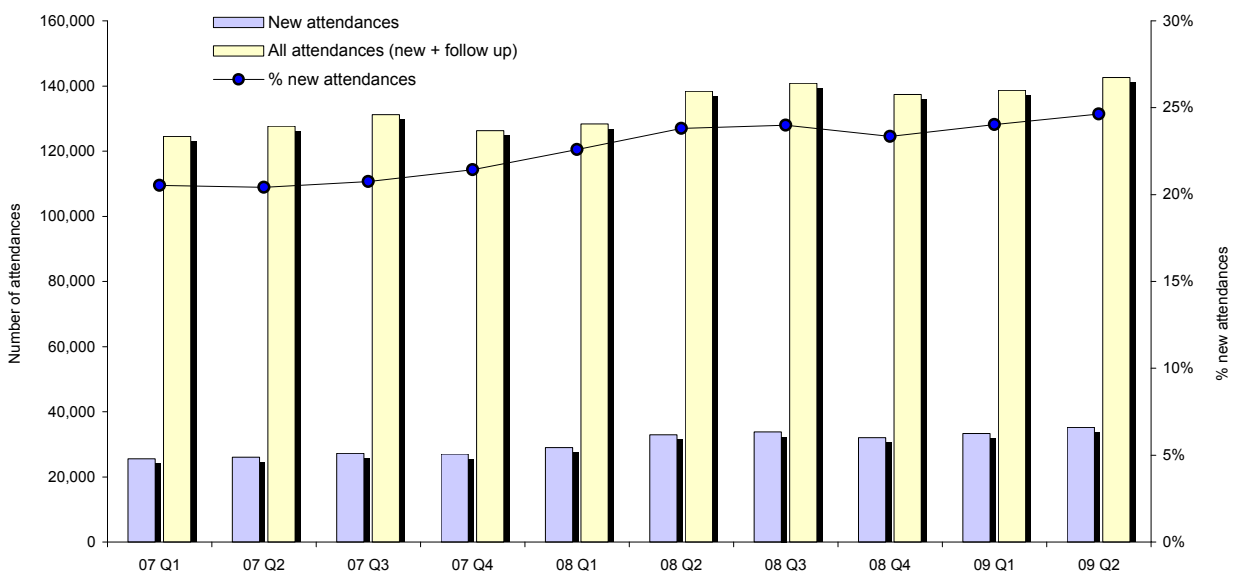
Trends in monthly proportions of DNA appointments for each metropolitan teaching hospital are contained in Table A-6 (page A-8).

This data indicates that, overall, higher proportions of DNA appointments were reported by RPH, KEMH and PMH compared to the other metropolitan teaching hospitals.

As already noted, variations between hospitals in waiting times are related to demographic, casemix and other factors.

Table A-7 (pages A-9 to A-10) provides a quarterly breakdown by each hospital for the number of follow up and new appointments.

**Figure 2: Attendances by type of outpatient appointment at all metropolitan teaching hospitals, WA, March 2007 quarter - June 2009 quarter**



**Table 3: Outpatient appointments by type of attendance at all metropolitan teaching hospitals, WA: March 2007 quarter - June 2009 quarter**

	Type of appointment			Total
	Did not attend		Attended (new + follow up)	
	n	%		
<b>2007</b>				
March qtr	21,906	15.0	124,531	146,437
June qtr	21,888	14.6	127,701	149,589
September qtr	22,063	14.4	131,223	153,286
December qtr	21,388	14.5	126,281	147,669
<b>2008</b>				
March qtr	21,053	14.1	128,322	149,375
June qtr	22,582	14.0	138,362	160,944
September qtr	23,366	14.2	140,826	164,192
December qtr	22,524	14.1	137,427	159,951
<b>2009</b>				
March qtr	23,224	14.3	138,638	161,862
June qtr	23,721	14.3	142,624	166,345
September qtr				
December qtr				

## 5. Specialty

A quarterly detailed breakdown of new appointments by specialty for all metropolitan teaching hospitals, as well as for each hospital is contained in Tables A-8 to A-21 (pages A-11 to A-38).

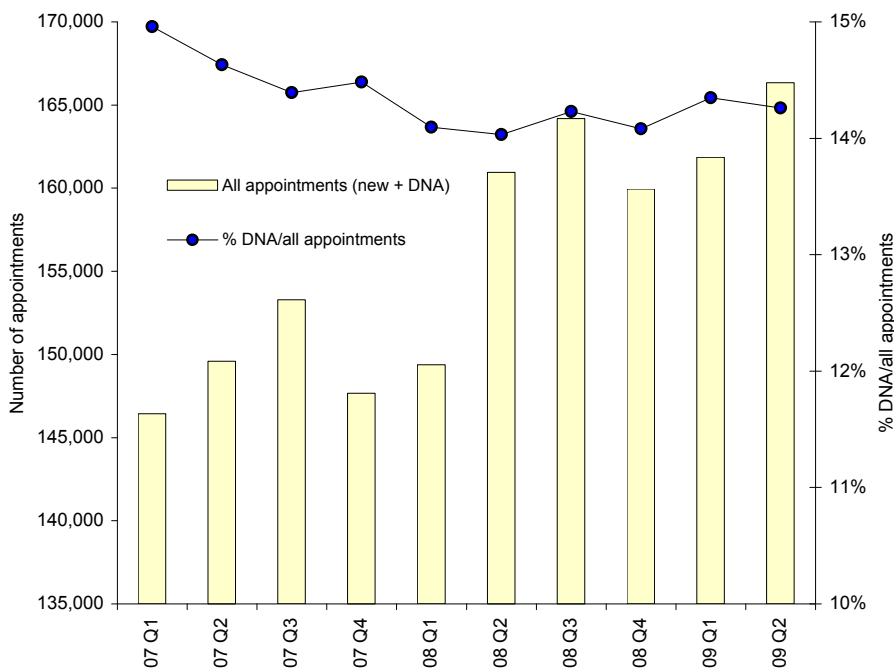
## 6. Non Teaching Hospitals

The inclusion of data for outpatient clinics at non teaching hospitals involves matching the descriptions of appointments at both teaching and non teaching hospitals.

Separation of matched from non matched outpatient appointments at non teaching hospitals is required to ensure inclusion of comparable data from non teaching hospitals within teaching hospital totals.

Approximately 6% of total outpatient attendances at all metropolitan hospitals occur at non teaching hospitals.

**Figure 3: Proportion (%) of DNA outpatient appointments at all metropolitan teaching hospitals, WA, March 2007 quarter- June 2009 quarter**



## WA Outpatient Quarterly Report, June 2009 Quarter

Table 4 provides an analysis of quarterly outpatient attendances (ie new and follow up appointments) at both teaching and non teaching metropolitan hospitals.

This shows compared that at metropolitan non teaching hospitals from the March 2007 quarter to the June 2009 quarter:

- total matched attendances grew from 5,082 to 6,835 - an increase of 34.5%;
- total non matched attendances declined from 2,373 to 1,878 - a decrease of 20.9%; and
- total attendances (ie matched and non matched) grew from 7,455 to 8,713 - an increase of 16.9%.

At metropolitan teaching hospitals from the March 2007 quarter to the June 2009 quarter:

- all attendances grew from 124,531 to 142,624 - an increase of 14.5%.

At teaching and non teaching hospitals from the March 2007 quarter to the June 2009 quarter:

- total attendances grew from 129,613 to 149,459 - an increase of 15.3%.

**Table 4: Outpatient attendances at metropolitan teaching & non teaching hospitals, WA: March 2007 quarter - June 2009 quarter**

	Non teaching hospitals						Teaching hospitals	Total matched attendances
	Matched specialties		Non matched specialties		All specialties			
	New	Total	New	Total	New	Total		
<b>2007</b>								
March qtr	3,464	5,082	1,665	2,373	5,129	7,455	124,531	129,613
June qtr	3,777	5,305	1,349	1,992	5,126	7,297	127,701	133,006
September qtr	4,320	5,875	1,377	2,045	5,697	7,920	131,223	137,098
December qtr	4,285	5,928	1,243	1,896	5,528	7,824	126,281	132,209
<b>2008</b>								
March qtr	4,121	6,113	1,330	2,069	5,451	8,182	128,322	134,435
June qtr	4,605	6,366	1,368	2,048	5,973	8,414	138,362	144,728
September qtr	4,727	6,464	1,284	1,823	6,011	8,287	140,826	147,290
December qtr	4,516	6,322	1,160	1,777	5,676	8,099	137,427	143,749
<b>2009</b>								
March qtr	4,421	6,240	1,252	1,830	5,673	8,070	138,638	144,878
June qtr	4,445	6,835	1,267	1,878	5,712	8,713	142,624	149,459
September qtr								
December qtr								

# Appendix Tables

**Table A-1: First time outpatient appointments & waiting time (days) at all metropolitan teaching hospitals, WA, January 2007 - June 2009**

	First appointments	Waiting time (days)				First appointments	Waiting time (days)		
		Mean	Median	90th percentile			Mean	Median	90th percentile
<b>2007</b>					<b>2009</b>				
January	7,134	100	36	192	January	8,485	81	30	170
February	8,404	96	32	193	February	9,920	90	31	189
March	8,157	102	32	203	March	11,005	87	29	190
April	7,254	95	30	186	April	9,553	95	30	182
May	9,016	97	30	189	May	10,593	93	28	194
June	7,702	99	33	202	June	10,547	88	27	187
July	8,093	91	30	180	July				
August	8,907	94	34	189	August				
September	7,708	98	32	180	September				
October	8,684	104	31	207	October				
November	8,814	101	30	190	November				
December	6,663	82	25	154	December				
<b>2008</b>									
January	7,599	88	30	169					
February	9,469	99	33	199					
March	8,802	104	31	210					
April	9,665	95	30	207					
May	10,173	97	28	201					
June	9,323	100	30	209					
July	10,256	97	29	202					
August	9,608	93	29	203					
September	9,733	97	30	193					
October	10,174	89	29	181					
November	9,566	88	28	182					
December	8,439	77	21	166					

WA Outpatient Quarterly Report, June 2009 Quarter

**Table A-2: Median & mean waiting time (days) of first time outpatient appointments at selected metropolitan teaching hospitals, WA, January 2007 - June 2009**

	Royal Perth Hospital		Fremantle Hospital		Sir Charles Gairdner Hospital		King Edward Memorial Hospital		Princess Margaret Hospital	
	Mean	Median	Mean	Median	Mean	Median	Mean	Median	Mean	Median
<b>2007</b>										
January	94	21	96	28	89	29	86	63	155	76
February	73	17	111	31	95	27	78	58	141	77
March	73	16	97	30	114	29	72	48	154	80
April	71	16	92	30	102	28	75	45	148	67
May	83	19	94	28	97	25	73	47	148	70
June	81	20	120	34	99	26	69	47	139	79
July	64	17	100	28	100	22	73	54	134	77
August	65	19	120	39	107	28	70	49	125	82
September	71	15	130	36	116	28	71	55	112	72
October	62	15	138	35	139	29	78	50	109	62
November	58	14	130	36	129	28	80	50	121	57
December	64	13	85	24	92	20	65	46	118	59
<b>2008</b>										
January	65	16	89	29	104	21	72	49	131	69
February	68	18	110	30	114	34	81	62	132	85
March	67	15	101	27	154	43	80	56	117	62
April	59	19	109	30	111	32	80	56	131	59
May	83	16	102	28	123	29	84	55	89	43
June	76	17	105	30	129	34	85	53	99	36
July	63	19	113	30	127	31	77	50	102	40
August	62	18	103	29	123	31	83	59	103	48
September	66	16	102	33	126	31	81	51	120	38
October	57	15	87	32	120	31	82	56	97	36
November	64	16	84	29	113	30	83	55	97	42
December	49	13	80	21	91	23	82	49	90	29
<b>2009</b>										
January	64	20	85	29	84	26	82	56	94	58
February	66	18	98	27	97	39	89	58	102	73
March	60	16	81	29	110	35	86	62	106	56
April	65	19	77	28	138	34	84	57	117	50
May	70	20	75	25	127	31	90	55	106	40
June	64	18	65	24	118	28	87	49	120	41
July										
August										
September										
October										
November										
December										

WA Outpatient Quarterly Report, June 2009 Quarter

**Table A-3: Waiting times of first time outpatient appointments at metropolitan teaching hospitals, WA: March 2007 quarter - June 2009 quarter**

	Royal Perth Hospital				Royal Perth Rehabilitation Hospital			
	First appointments	Waiting time (days)			First time appointments	Waiting time (days)		
		Mean	Median	90th percentile		Mean	Median	90th percentile
<b>2007</b>								
March qtr	6,742	80	18	139	1,392	128	40	299
June qtr	6,743	79	18	143	1,409	116	26	238
September qtr	7,017	67	17	140	1,419	83	23	197
December qtr	6,712	61	14	121	1,295	97	26	201
<b>2008</b>								
March qtr	7,106	67	16	140	1,299	106	38	235
June qtr	7,435	73	17	147	1,464	93	33	228
September qtr	7,641	63	18	140	1,326	84	28	189
December qtr	7,260	57	15	133	1,241	116	37	200
<b>2009</b>								
March qtr	7,434	63	18	152	1,205	101	32	184
June qtr	7,357	66	19	147	1,382	99	35	175
September qtr								
December qtr								

	Sir Charles Gairdner Hospital				Fremantle Hospital			
	First appointments	Waiting time (days)			First time appointments	Waiting time (days)		
		Mean	Median	90th percentile		Mean	Median	90th percentile
<b>2007</b>								
March qtr	5,397	100	29	224	4,669	102	30	252
June qtr	5,361	99	27	192	4,883	102	30	229
September qtr	5,719	108	26	197	4,837	116	34	277
December qtr	5,579	122	26	240	4,466	120	33	342
<b>2008</b>								
March qtr	5,255	127	32	260	5,989	100	28	224
June qtr	6,361	121	32	267	6,951	105	29	257
September qtr	6,291	126	31	279	7,141	106	31	254
December qtr	5,791	109	28	188	7,204	84	27	176
<b>2009</b>								
March qtr	5,884	99	34	177	7,764	88	28	177
June qtr	6,790	127	31	264	7,568	72	26	147
September qtr								
December qtr								

WA Outpatient Quarterly Report, June 2009 Quarter

**Table A-3: Waiting times of first time outpatient appointments at metropolitan teaching hospitals, WA: March 2007 quarter - June 2009 quarter (continued)**

	King Edward Memorial Hospital				Princess Margaret Hospital			
	First time appointments	Waiting time (days)			First time appointments	Waiting time (days)		
		Mean	Median	90th percentile		Mean	Median	90th percentile
<b>2007</b>								
March qtr	2,892	79	57	180	2,603	150	78	219
June qtr	2,815	72	47	166	2,761	145	71	234
September qtr	2,849	71	52	161	2,867	124	77	209
December qtr	2,963	75	49	160	3,146	116	60	197
<b>2008</b>								
March qtr	2,808	78	56	171	3,413	126	73	210
June qtr	2,862	83	54	188	4,088	105	47	207
September qtr	3,042	80	54	173	4,156	108	41	210
December qtr	2,806	82	54	187	3,877	95	36	203
<b>2009</b>								
March qtr	3,016	86	59	196	4,107	101	62	222
June qtr	2,954	87	53	200	4,642	114	43	223
September qtr								
December qtr								

WA Outpatient Quarterly Report, June 2009 Quarter

**Table A-4: Proportion (%) of new outpatient appointments at metropolitan teaching hospitals, WA, January 2007 - June 2009**

	Royal Perth Hospital	Fremantle Hospital	Sir Charles Gairdner Hospital	RPH Rehabilitation Hospital	King Edward Memorial Hospital	Princess Margaret Hospital	Total
<b>2007</b>							
January	18.6	22.9	16.5	28.0	31.1	14.8	19.8
February	19.9	24.7	19.1	28.1	30.5	16.7	21.3
March	19.1	22.8	19.2	28.5	28.0	15.6	20.4
April	19.4	22.6	17.3	27.7	30.9	14.8	20.0
May	19.2	23.9	17.5	30.4	29.2	16.2	20.4
June	20.0	23.8	18.2	27.4	29.5	16.2	20.7
July	19.1	23.6	17.7	28.9	30.1	16.2	20.4
August	19.8	22.4	18.2	30.5	31.1	16.9	20.8
September	19.0	22.4	20.9	29.3	29.8	17.1	21.1
October	18.9	22.1	20.6	29.8	31.2	19.3	21.4
November	19.6	21.2	20.8	28.9	30.5	21.0	21.6
December	18.9	20.8	21.2	27.5	31.6	18.5	21.2
<b>2008</b>							
January	19.1	25.1	18.1	29.5	30.3	18.9	21.5
February	20.1	26.9	21.2	28.1	29.3	21.5	22.9
March	20.1	28.0	21.6	30.1	29.7	22.1	23.4
April	19.7	29.2	21.5	32.4	30.4	21.2	23.5
May	20.3	28.9	20.7	31.3	29.1	23.3	23.6
June	20.5	28.3	21.5	30.9	30.0	27.7	24.4
July	20.4	28.7	21.6	29.1	31.6	26.4	24.2
August	20.7	29.1	20.6	29.6	30.9	25.0	24.0
September	19.6	31.1	19.0	32.0	30.8	24.7	23.7
October	19.4	30.8	17.7	31.5	30.9	24.5	23.2
November	20.1	31.4	18.2	31.2	31.2	25.8	23.8
December	19.4	28.6	19.1	25.3	30.6	26.1	23.0
<b>2009</b>							
January	18.8	29.6	17.5	30.2	32.6	24.5	23.0
February	20.2	30.5	19.2	27.3	32.8	26.4	24.0
March	20.3	32.3	20.2	29.9	31.8	27.8	24.9
April	19.2	29.4	20.0	31.2	31.3	29.3	24.1
May	20.6	29.5	20.8	32.3	32.2	29.2	24.9
June	19.3	30.0	21.4	33.0	33.3	29.6	24.9
July							
August							
September							
October							
November							
December							

WA Outpatient Quarterly Report, June 2009 Quarter

**Table A-5: Attendances by type of outpatient appointment at metropolitan teaching hospitals, WA: March 2007 quarter - June 2009 quarter**

	Royal Perth Hospital				Royal Perth Rehabilitation Hospital			
	Follow up	New		Total	Follow up	New		Total
		n	%			n	%	
<b>2007</b>								
March qtr	31,200	7,411	19.2	38,611	3,916	1,538	28.2	5,454
June qtr	30,980	7,523	19.5	38,503	4,014	1,609	28.6	5,623
September qtr	32,517	7,790	19.3	40,307	3,952	1,663	29.6	5,615
December qtr	31,500	7,462	19.2	38,962	3,809	1,547	28.9	5,356
<b>2008</b>								
March qtr	31,983	7,878	19.8	39,861	3,821	1,576	29.2	5,397
June qtr	32,896	8,316	20.2	41,212	3,797	1,749	31.5	5,546
September qtr	33,717	8,542	20.2	42,259	3,565	1,544	30.2	5,109
December qtr	33,649	8,216	19.6	41,865	3,586	1,520	29.8	5,106
<b>2009</b>								
March qtr	34,126	8,423	19.8	42,549	3,765	1,541	29.0	5,306
June qtr	34,378	8,424	19.7	42,802	3,607	1,715	32.2	5,322
September qtr								
December qtr								

	Sir Charles Gairdner Hospital				Fremantle Hospital			
	Follow up	New		Total	Follow up	New		Total
		n	%			n	%	
<b>2007</b>								
March qtr	25,763	5,808	18.4	31,571	16,281	5,003	23.5	21,284
June qtr	27,034	5,797	17.7	32,831	17,068	5,238	23.5	22,306
September qtr	27,624	6,416	18.8	34,040	17,893	5,281	22.8	23,174
December qtr	25,530	6,716	20.8	32,246	17,945	4,885	21.4	22,830
<b>2008</b>								
March qtr	24,775	6,382	20.5	31,157	18,077	6,562	26.6	24,639
June qtr	28,284	7,607	21.2	35,891	18,910	7,648	28.8	26,558
September qtr	28,833	7,420	20.5	36,253	19,017	8,007	29.6	27,024
December qtr	28,894	6,456	18.3	35,350	18,723	8,166	30.4	26,889
<b>2009</b>								
March qtr	27,386	6,471	19.1	33,857	19,508	8,708	30.9	28,216
June qtr	28,533	7,461	20.7	35,994	20,297	8,537	29.6	28,834
September qtr								
December qtr								

WA Outpatient Quarterly Report, June 2009 Quarter

**Table A-5: Attendances by type of outpatient appointment at metropolitan teaching hospitals, WA: March 2007 quarter - June 2009 quarter (continued)**

	King Edward Memorial Hospital				Princess Margaret Hospital			
	Follow up	New		Total	Follow up	New		Total
		n	%			n	%	
<b>2007</b>								
March qtr	7,208	3,069	29.9	10,277	14,609	2,725	15.7	17,334
June qtr	7,074	3,006	29.8	10,080	15,461	2,897	15.8	18,358
September qtr	7,000	3,050	30.3	10,050	15,021	3,016	16.7	18,037
December qtr	6,953	3,138	31.1	10,091	13,486	3,310	19.7	16,796
<b>2008</b>								
March qtr	7,098	3,014	29.8	10,112	13,568	3,588	20.9	17,156
June qtr	7,350	3,124	29.8	10,474	14,175	4,506	24.1	18,681
September qtr	7,262	3,283	31.1	10,545	14,654	4,982	25.4	19,636
December qtr	6,888	3,078	30.9	9,966	13,612	4,639	25.4	18,251
<b>2009</b>								
March qtr	6,891	3,296	32.4	10,187	13,645	4,878	26.3	18,523
June qtr	6,828	3,258	32.3	10,086	13,838	5,748	29.3	19,586
September qtr								
December qtr								

WA Outpatient Quarterly Report, June 2009 Quarter

**Table A-6: Proportion (%) of did not attend outpatient appointments at metropolitan teaching hospitals, WA, January 2007 - June 2009**

	Royal Perth Hospital	Fremantle Hospital	Sir Charles Gairdner Hospital	RPH Rehabilitation Hospital	King Edward Memorial Hospital	Princess Margaret Hospital	Total
<b>2007</b>							
January	16.8	13.9	12.0	10.1	16.7	15.2	14.7
February	17.5	14.1	12.5	10.3	18.0	15.7	15.2
March	16.8	13.8	12.8	13.7	19.4	14.2	15.0
April	17.2	13.2	12.5	10.7	18.7	13.7	14.7
May	16.6	13.7	12.7	13.1	16.9	12.2	14.3
June	17.7	14.0	12.8	13.3	16.5	13.0	14.9
July	16.9	14.3	12.1	11.0	17.5	12.9	14.5
August	16.7	12.7	11.4	11.8	18.1	13.8	14.2
September	16.8	14.8	11.8	11.7	17.2	13.5	14.6
October	16.2	13.4	12.3	13.0	16.2	14.8	14.4
November	16.1	13.9	12.4	13.1	17.7	15.3	14.7
December	15.8	12.4	12.0	10.9	17.8	16.4	14.4
<b>2008</b>							
January	16.2	12.2	10.9	10.9	16.5	15.3	14.0
February	16.4	12.6	10.7	9.9	17.6	15.2	13.9
March	15.7	13.9	12.3	9.9	16.7	15.3	14.3
April	15.8	12.7	13.0	9.5	16.1	15.1	14.2
May	15.0	12.9	11.1	11.1	15.6	15.5	13.6
June	15.8	13.8	12.2	11.2	16.5	15.7	14.4
July	15.8	13.9	12.1	11.2	14.9	16.4	14.3
August	15.4	12.4	11.9	12.7	16.0	15.6	14.0
September	15.9	13.7	13.0	11.0	15.3	14.7	14.4
October	15.4	13.1	12.3	12.5	16.9	16.1	14.3
November	15.2	12.7	12.0	12.6	17.1	15.3	13.9
December	15.2	12.1	11.6	11.6	17.1	17.2	14.0
<b>2009</b>							
January	16.2	12.7	11.6	12.6	14.8	19.4	14.7
February	15.1	12.4	11.8	11.3	15.4	18.3	14.1
March	15.6	12.3	12.2	12.0	14.4	18.6	14.3
April	15.4	13.2	12.1	13.0	15.5	18.2	14.5
May	15.5	13.5	11.6	10.6	15.6	17.9	14.3
June	15.0	13.0	11.9	12.1	14.7	17.1	14.0
July							
August							
September							
October							
November							
December							

WA Outpatient Quarterly Report, June 2009 Quarter

Table A-7: Outpatient appointments by type of attendance at metropolitan teaching hospitals, WA: March 2007 quarter - June 2009 quarter

	Royal Perth Hospital				Royal Perth Rehabilitation Hospital			
	Did not attend		Attended	Total (DNA + at- tended)	Did not attend		Attended	Total (DNA + at- tended)
	n	%	(new + follow up)		n	%	(new + follow up)	
<b>2007</b>								
March qtr	7,923	17.0	38,611	46,534	708	11.5	5,454	6,162
June qtr	7,956	17.1	38,503	46,459	800	12.5	5,623	6,423
September qtr	8,134	16.8	40,307	48,441	730	11.5	5,615	6,345
December qtr	7,463	16.1	38,962	46,425	768	12.5	5,356	6,124
<b>2008</b>								
March qtr	7,653	16.1	39,861	47,514	615	10.2	5,397	6,012
June qtr	7,577	15.5	41,212	48,789	657	10.6	5,546	6,203
September qtr	7,880	15.7	42,259	50,139	672	11.6	5,109	5,781
December qtr	7,534	15.3	41,865	49,399	717	12.3	5,106	5,823
<b>2009</b>								
March qtr	7,888	15.6	42,549	50,437	719	11.9	5,306	6,025
June qtr	7,721	15.3	42,802	50,523	715	11.8	5,322	6,037
September qtr								
December qtr								

	Sir Charles Gairdner Hospital				Fremantle Hospital			
	Did not attend		Attended	Total (DNA + at- tended)	Did not attend		Attended	Total (DNA + at- tended)
	n	%	(new + follow up)		n	%	(new + follow up)	
<b>2007</b>								
March qtr	4,509	12.5	31,571	36,080	3,442	13.9	21,284	24,726
June qtr	4,769	12.7	32,831	37,600	3,533	13.7	22,306	25,839
September qtr	4,533	11.8	34,040	38,573	3,727	13.9	23,174	26,901
December qtr	4,493	12.2	32,246	36,739	3,505	13.3	22,830	26,335
<b>2008</b>								
March qtr	3,982	11.3	31,157	35,139	3,651	12.9	24,639	28,290
June qtr	4,935	12.1	35,891	40,826	4,001	13.1	26,558	30,559
September qtr	5,099	12.3	36,253	41,352	4,164	13.4	27,024	31,188
December qtr	4,812	12.0	35,350	40,162	3,902	12.7	26,889	30,791
<b>2009</b>								
March qtr	4,555	11.9	33,857	38,412	4,018	12.5	28,216	32,234
June qtr	4,843	11.9	35,994	40,837	4,397	13.2	28,834	33,231
September qtr								
December qtr								

WA Outpatient Quarterly Report, June 2009 Quarter

Table A-7: Outpatient appointments by type of attendance at metropolitan teaching hospitals, WA: March 2007 quarter - June 2009 quarter (continued)

	King Edward Memorial Hospital				Princess Margaret Hospital			
	Did not attend		Attended	Total	Did not attend		Attended	Total
	n	%	(new + follow up)	(DNA + attended)	n	%	(new + follow up)	(DNA + attended)
<b>2007</b>								
March qtr	2,265	18.1	10,277	12,542	3,059	15.0	17,334	20,393
June qtr	2,112	17.3	10,080	12,192	2,718	12.9	18,358	21,076
September qtr	2,146	17.6	10,050	12,196	2,793	13.4	18,037	20,830
December qtr	2,096	17.2	10,091	12,187	3,063	15.4	16,796	19,859
<b>2008</b>								
March qtr	2,065	17.0	10,112	12,177	3,087	15.2	17,156	20,243
June qtr	2,003	16.1	10,474	12,477	3,409	15.4	18,681	22,090
September qtr	1,921	15.4	10,545	12,466	3,630	15.6	19,636	23,266
December qtr	2,046	17.0	9,966	12,012	3,513	16.1	18,251	21,764
<b>2009</b>								
March qtr	1,777	14.9	10,187	11,964	4,267	18.7	18,523	22,790
June qtr	1,821	15.3	10,086	11,907	4,224	17.7	19,586	23,810
September qtr								
December qtr								

WA Outpatient Quarterly Report, June 2009 Quarter

**Table A-8: Quarterly new outpatient appointments by specialty, WA, Metropolitan summary, March 2007 quarter - December 2008 quarter**

	2007				2008			
	Qtr 1	Qtr 2	Qtr 3	Qtr 4	Qtr 1	Qtr 2	Qtr 3	Qtr 4
Adolescent	20	20	27	26	24	21	30	27
Amputee	30	30	28	14	17	15	20	19
Anaesthetic	1	1	0	132	1,682	1,679	1,580	1,766
Antenatal	1,842	1,884	1,887	1,930	1,943	1,815	1,949	1,794
Breast clinic	226	264	299	315	297	309	310	380
Burns	207	199	110	147	161	90	100	51
Cardiology	573	640	569	555	529	549	593	657
Cardiothoracic	52	52	49	55	65	77	65	61
Colorectal	61	70	81	76	64	87	100	96
Colposcopy	226	217	218	242	182	228	236	224
Dental	296	265	260	247	237	227	230	229
Dermatology	549	585	623	565	575	654	767	651
Developmental	77	63	80	60	50	71	97	89
Diabetic	316	319	280	325	303	314	361	277
Diabetic education	264	282	260	216	229	253	232	243
Endocrinology	223	258	273	270	228	286	271	261
Endoscopy	55	48	50	57	59	51	68	61
ENT	1,328	1,255	1,414	1,342	1,243	1,235	1,504	1,275
Family planning	34	45	42	38	31	42	47	39
Fertility	98	83	99	72	67	107	91	77
Gastroenterology	640	643	682	682	698	853	808	720
General medicine	468	478	547	454	472	456	433	365
General surgery	1,027	1,234	1,238	1,150	1,013	1,234	1,274	1,098
Geriatrics	146	138	164	112	135	121	144	109
Gynaecology	673	652	655	699	671	705	763	693
Haematology	409	316	362	406	367	486	439	428
Hepatology	135	132	157	120	144	170	165	145
Hyperbaric	27	32	28	35	29	29	16	26
Immunology	415	507	547	472	541	579	490	402
Infectious diseases	336	363	381	338	330	372	321	321
Menopause	82	62	82	76	74	89	91	98
Neurogenetic	39	37	38	27	38	39	32	32
Neurology	876	806	949	761	905	1,084	1,166	1,002
Neurosurgery	357	361	447	473	506	663	639	561
Oncology	629	544	706	757	711	801	919	732
Ophthalmology	1,264	1,408	1,677	1,403	1,608	1,862	1,979	1,895
Oral surgery	19	15	9	22	74	71	85	78
Orthopaedics - trauma	531	569	520	569	596	584	630	678
Orthopaedics	2,134	2,168	1,746	1,943	1,813	2,273	2,189	2,239
Osteoporosis	15	15	13	17	23	27	39	35

WA Outpatient Quarterly Report, June 2009 Quarter

**Table A-8: Quarterly new outpatient appointments by specialty, WA, Metropolitan summary, March 2007 quarter - December 2008 quarter (continued)**

	2007				2008			
	Qtr 1	Qtr 2	Qtr 3	Qtr 4	Qtr 1	Qtr 2	Qtr 3	Qtr 4
Paediatric neurology	7	5	6	7	7	9	5	5
Paediatric surgery	19	14	14	11	15	20	17	21
Paediatrics	26	37	55	39	37	62	61	66
Pain	280	295	299	560	581	754	707	773
Palliative care	32	36	32	50	52	45	44	32
Plastic dressings	739	670	700	691	596	629	650	694
Plastic surgery	1,162	1,142	1,163	1,115	1,185	1,690	1,789	1,848
Podiatry	259	215	208	180	229	339	203	138
Preadmission	1,217	1,273	1,202	1,072	1,109	1,221	1,261	1,002
Radiation oncology	209	220	219	225	215	213	209	224
Radiotherapy	444	441	489	488	433	478	475	541
Rehabilitation engineering	0	0	3	3	0	0	0	0
Rehabilitation medicine	82	83	84	55	69	61	42	28
Renal	252	306	307	300	315	311	285	270
Respiratory medicine	204	198	226	242	262	261	294	279
Rheumatology	352	294	372	307	293	303	367	361
Scoliosis	19	32	35	56	47	57	54	36
Sexual health	351	320	328	272	399	366	330	341
Spinal	137	135	154	189	198	229	223	196
Thoracic medicine	113	141	123	139	108	164	138	147
Ulcer	39	49	42	52	49	49	50	44
Urology	669	691	673	622	569	917	801	836
Vascular surgery	383	315	377	286	368	375	319	363
<b>Total</b>	<b>23,695</b>	<b>23,972</b>	<b>24,708</b>	<b>24,161</b>	<b>25,870</b>	<b>29,161</b>	<b>29,597</b>	<b>28,179</b>

WA Outpatient Quarterly Report, June 2009 Quarter

**Table A-9: Quarterly new outpatient appointments by specialty, WA, Metropolitan summary, March 2009 quarter - June 2009 quarter**

	2009				2010			
	Qtr 1	Qtr 2	Qtr 3	Qtr 4	Qtr 1	Qtr 2	Qtr 3	Qtr 4
Adolescent	0	0						
Amputee	29	19						
Anaesthetic	1,841	1,815						
Antenatal	2,096	1,952						
Breast clinic	326	615						
Burns	74	72						
Cardiology	685	704						
Cardiothoracic	57	57						
Colorectal	82	75						
Colposcopy	256	312						
Dental	256	229						
Dermatology	734	709						
Developmental	78	85						
Diabetic	225	243						
Diabetic education	226	298						
Endocrinology	255	298						
Endoscopy	66	56						
ENT	1,565	1,416						
Family planning	44	48						
Fertility	62	76						
Gastroenterology	757	666						
General medicine	433	418						
General surgery	1,227	1,212						
Geriatrics	139	112						
Gynaecology	764	745						
Haematology	458	498						
Hepatology	183	195						
Hyperbaric	25	29						
Immunology	525	604						
Infectious diseases	373	342						
Menopause	100	88						
Neurogenetic	32	57						
Neurology	1,073	1,132						
Neurosurgery	520	561						
Oncology	702	681						
Ophthalmology	1,882	1,890						
Oral surgery	73	69						
Orthopaedics - trauma	679	694						
Orthopaedics	2,184	2,896						
Osteoporosis	26	22						

WA Outpatient Quarterly Report, June 2009 Quarter

Table A-9: Quarterly new outpatient appointments by specialty, WA, Metropolitan summary, March 2009 quarter - June 2009 quarter (continued)

	2009				2010			
	Qtr 1	Qtr 2	Qtr 3	Qtr 4	Qtr 1	Qtr 2	Qtr 3	Qtr 4
Paediatric neurology	7	6						
Paediatric surgery	29	20						
Paediatrics	87	69						
Pain	851	697						
Palliative care	57	44						
Plastic dressings	617	703						
Plastic surgery	1,642	1,936						
Podiatry	187	205						
Preadmission	1,085	1,131						
Radiation oncology	209	258						
Radiotherapy	482	487						
Rehabilitation engineering	0	0						
Rehabilitation medicine	48	52						
Renal	294	280						
Respiratory medicine	297	306						
Rheumatology	348	383						
Scoliosis	49	64						
Sexual health	365	390						
Spinal	240	254						
Thoracic medicine	140	142						
Ulcer	60	50						
Urology	858	893						
Vascular surgery	346	333						
<b>Total</b>	<b>29,410</b>	<b>30,693</b>						

WA Outpatient Quarterly Report, June 2009 Quarter

Table A-10: Quarterly new outpatient appointments by specialty, Royal Perth Hospital, March 2007 quarter - December 2008 quarter

	2007				2008			
	Qtr 1	Qtr 2	Qtr 3	Qtr 4	Qtr 1	Qtr 2	Qtr 3	Qtr 4
Adolescent	0	0	0	0	0	0	0	0
Amputee	0	0	0	0	0	0	0	0
Anaesthetic	0	0	0	0	0	0	0	0
Antenatal	0	0	0	0	0	0	0	0
Breast clinic	34	32	79	91	88	70	82	104
Burns	115	125	70	119	124	45	30	13
Cardiology	258	320	264	263	226	234	292	278
Cardiothoracic	0	0	0	0	8	5	0	0
Colorectal	61	70	81	76	64	87	100	96
Colposcopy	0	0	0	0	0	0	0	0
Dental	274	256	249	228	216	201	215	218
Dermatology	175	198	224	167	185	190	215	201
Developmental	0	0	0	0	0	0	0	0
Diabetic	200	199	164	202	196	174	181	136
Diabetic education	102	122	97	83	57	75	58	101
Endocrinology	68	82	79	81	74	84	81	99
Endoscopy	0	0	0	0	0	0	0	0
ENT	341	277	352	326	347	336	396	299
Family planning	0	0	0	0	0	0	0	0
Fertility	0	0	0	0	0	0	0	0
Gastroenterology	283	294	332	372	382	384	389	363
General medicine	40	44	53	36	46	31	39	28
General surgery	148	171	188	198	200	206	258	213
Geriatrics	0	0	0	0	0	0	0	0
Gynaecology	0	0	0	0	0	0	0	0
Haematology	209	153	171	184	181	236	201	204
Hepatology	45	38	36	36	37	55	47	49
Hyperbaric	0	0	0	0	0	0	0	0
Immunology	89	74	78	86	86	101	91	92
Infectious diseases	29	30	20	25	21	20	26	28
Menopause	0	0	0	0	0	0	0	0
Neurogenetic	39	37	38	27	38	39	32	32
Neurology	337	318	369	304	336	343	409	337
Neurosurgery	17	18	3	1	2	6	4	5
Oncology	216	169	207	177	205	218	208	240
Ophthalmology	580	670	689	652	683	727	853	823
Oral surgery	0	0	0	0	0	0	0	0
Orthopaedics - trauma	531	569	520	569	596	584	630	678
Orthopaedics	61	105	110	105	105	153	152	113
Osteoporosis	15	15	13	17	23	27	39	35

WA Outpatient Quarterly Report, June 2009 Quarter

**Table A-10: Quarterly new outpatient appointments by specialty, Royal Perth Hospital, March 2007 quarter - December 2008 quarter (continued)**

	2007				2008			
	Qtr 1	Qtr 2	Qtr 3	Qtr 4	Qtr 1	Qtr 2	Qtr 3	Qtr 4
Paediatric neurology	0	0	0	0	0	0	0	0
Paediatric surgery	0	0	0	0	0	0	0	0
Paediatrics	0	0	0	0	0	0	0	0
Pain	0	0	0	0	0	0	0	0
Palliative care	13	13	12	19	17	14	14	15
Plastic dressings	0	0	0	0	0	0	0	0
Plastic surgery	701	638	698	630	790	863	782	772
Podiatry	66	54	50	48	32	91	46	56
Preadmission	784	777	775	684	734	794	848	687
Radiation oncology	136	142	165	191	157	159	144	158
Radiotherapy	0	0	0	0	0	0	0	0
Rehabilitation engineering	0	0	0	0	0	0	0	0
Rehabilitation medicine	0	0	0	0	0	0	0	0
Renal	53	60	91	83	61	67	68	59
Respiratory medicine	0	0	0	0	0	0	0	0
Rheumatology	80	59	89	70	78	74	90	73
Scoliosis	0	0	0	0	0	0	0	0
Sexual health	341	296	305	253	382	347	315	317
Spinal	0	0	0	0	0	0	0	0
Thoracic medicine	0	0	0	0	0	0	0	0
Ulcer	19	24	16	20	24	19	18	9
Urology	135	168	168	163	144	214	165	157
Vascular surgery	147	126	162	126	161	162	123	172
<b>Total</b>	<b>6,742</b>	<b>6,743</b>	<b>7,017</b>	<b>6,712</b>	<b>7,106</b>	<b>7,435</b>	<b>7,641</b>	<b>7,260</b>

WA Outpatient Quarterly Report, June 2009 Quarter

**Table A-11: Quarterly new outpatient appointments by specialty, Royal Perth Hospital, March 2009 quarter - June 2009 quarter**

	2009				2010			
	Qtr 1	Qtr 2	Qtr 3	Qtr 4	Qtr 1	Qtr 2	Qtr 3	Qtr 4
Adolescent	0	0						
Amputee	0	0						
Anaesthetic	0	0						
Antenatal	0	0						
Breast clinic	79	58						
Burns	12	21						
Cardiology	295	300						
Cardiothoracic	0	0						
Colorectal	82	75						
Colposcopy	0	0						
Dental	239	214						
Dermatology	251	213						
Developmental	0	0						
Diabetic	101	109						
Diabetic education	85	58						
Endocrinology	76	69						
Endoscopy	0	0						
ENT	313	244						
Family planning	0	0						
Fertility	0	0						
Gastroenterology	422	364						
General medicine	34	35						
General surgery	246	195						
Geriatrics	0	0						
Gynaecology	0	0						
Haematology	213	229						
Hepatology	49	53						
Hyperbaric	0	0						
Immunology	89	105						
Infectious diseases	31	31						
Menopause	0	0						
Neurogenetic	32	57						
Neurology	440	415						
Neurosurgery	15	21						
Oncology	180	200						
Ophthalmology	832	771						
Oral surgery	0	0						
Orthopaedics - trauma	679	694						
Orthopaedics	96	105						
Osteoporosis	26	22						

WA Outpatient Quarterly Report, June 2009 Quarter

Table A-11: Quarterly new outpatient appointments by specialty, Royal Perth Hospital, March 2009 quarter - June 2009 quarter (continued)

	2009				2010			
	Qtr 1	Qtr 2	Qtr 3	Qtr 4	Qtr 1	Qtr 2	Qtr 3	Qtr 4
Paediatric neurology	0	0						
Paediatric surgery	0	0						
Paediatrics	0	0						
Pain	0	0						
Palliative care	15	13						
Plastic dressings	0	0						
Plastic surgery	696	705						
Podiatry	50	37						
Preadmission	756	780						
Radiation oncology	159	208						
Radiotherapy	0	0						
Rehabilitation engineering	0	0						
Rehabilitation medicine	0	0						
Renal	61	65						
Respiratory medicine	0	0						
Rheumatology	73	79						
Scoliosis	0	0						
Sexual health	352	370						
Spinal	0	0						
Thoracic medicine	0	0						
Ulcer	28	27						
Urology	184	265						
Vascular surgery	143	150						
<b>Total</b>	<b>7,434</b>	<b>7,357</b>						

WA Outpatient Quarterly Report, June 2009 Quarter

Table A-12: Quarterly new outpatient appointments by specialty, Royal Perth Rehabilitation Hospital, March 2007 quarter - December 2008 quarter

	2007				2008			
	Qtr 1	Qtr 2	Qtr 3	Qtr 4	Qtr 1	Qtr 2	Qtr 3	Qtr 4
Adolescent	0	0	0	0	0	0	0	0
Amputee	13	9	13	10	11	10	12	7
Anaesthetic	0	0	0	0	0	0	0	0
Antenatal	0	0	0	0	0	0	0	0
Breast clinic	0	0	0	0	0	0	0	0
Burns	0	0	0	0	0	0	0	0
Cardiology	0	0	0	0	0	0	0	0
Cardiothoracic	0	0	0	0	0	0	0	0
Colorectal	0	0	0	0	0	0	0	0
Colposcopy	0	0	0	0	0	0	0	0
Dental	22	9	11	19	21	26	15	11
Dermatology	0	0	0	0	0	0	0	0
Developmental	0	0	0	0	0	0	0	0
Diabetic	0	0	0	0	0	0	0	0
Diabetic education	0	0	0	0	0	0	0	0
Endocrinology	0	0	0	0	0	0	0	0
Endoscopy	0	0	0	0	0	0	0	0
ENT	0	0	0	0	0	0	0	0
Family planning	0	0	0	0	0	0	0	0
Fertility	0	0	0	0	0	0	0	0
Gastroenterology	0	0	0	0	0	0	0	0
General medicine	0	0	0	0	0	0	0	0
General surgery	0	0	0	0	0	0	0	0
Geriatrics	0	0	0	0	0	0	0	0
Gynaecology	0	0	0	0	0	0	0	0
Haematology	0	0	0	0	0	0	0	0
Hepatology	0	0	0	0	0	0	0	0
Hyperbaric	0	0	0	0	0	0	0	0
Immunology	0	0	0	0	0	0	0	0
Infectious diseases	0	0	0	0	0	0	0	0
Menopause	0	0	0	0	0	0	0	0
Neurogenetic	0	0	0	0	0	0	0	0
Neurology	79	41	74	43	50	66	59	59
Neurosurgery	0	0	0	0	0	0	0	0
Oncology	0	0	0	0	0	0	0	0
Ophthalmology	0	0	0	0	0	0	0	0
Oral surgery	0	0	0	0	0	0	0	0
Orthopaedics - trauma	0	0	0	0	0	0	0	0
Orthopaedics	312	325	270	265	251	275	266	211
Osteoporosis	0	0	0	0	0	0	0	0

**Table A-12: Quarterly new outpatient appointments by specialty, Royal Perth Rehabilitation Hospital, March 2007 quarter - December 2008 quarter (continued)**

	2007				2008			
	Qtr 1	Qtr 2	Qtr 3	Qtr 4	Qtr 1	Qtr 2	Qtr 3	Qtr 4
Paediatric neurology	0	0	0	0	0	0	0	0
Paediatric surgery	0	0	0	0	0	0	0	0
Paediatrics	0	0	0	0	0	0	0	0
Pain	80	96	110	101	156	153	112	126
Palliative care	0	0	0	0	0	0	0	0
Plastic dressings	0	0	0	0	0	0	0	0
Plastic surgery	0	0	0	0	0	0	0	0
Podiatry	17	9	12	11	20	27	12	9
Preadmission	422	465	414	367	355	406	404	313
Radiation oncology	0	0	0	0	0	0	0	0
Radiotherapy	0	0	0	0	0	0	0	0
Rehabilitation engineering	0	0	3	3	0	0	0	0
Rehabilitation medicine	82	83	84	55	69	61	42	28
Renal	0	0	0	0	0	0	0	0
Respiratory medicine	0	0	0	0	0	0	0	0
Rheumatology	76	60	112	85	52	45	61	106
Scoliosis	19	32	35	56	47	57	54	36
Sexual health	0	0	0	0	0	0	0	0
Spinal	137	135	154	189	198	229	223	196
Thoracic medicine	0	0	0	0	0	0	0	0
Ulcer	0	0	0	0	0	0	0	0
Urology	133	145	127	91	69	109	66	139
Vascular surgery	0	0	0	0	0	0	0	0
<b>Total</b>	<b>1,392</b>	<b>1,409</b>	<b>1,419</b>	<b>1,295</b>	<b>1,299</b>	<b>1,464</b>	<b>1,326</b>	<b>1,241</b>

WA Outpatient Quarterly Report, June 2009 Quarter

**Table A-13: Quarterly new outpatient appointments by specialty, Royal Perth Rehabilitation Hospital, March 2009 quarter - June 2009 quarter**

	2009				2010			
	Qtr 1	Qtr 2	Qtr 3	Qtr 4	Qtr 1	Qtr 2	Qtr 3	Qtr 4
Adolescent	0	0						
Amputee	8	9						
Anaesthetic	0	0						
Antenatal	0	0						
Breast clinic	0	0						
Burns	0	0						
Cardiology	0	0						
Cardiothoracic	0	0						
Colorectal	0	0						
Colposcopy	0	0						
Dental	17	15						
Dermatology	0	0						
Developmental	0	0						
Diabetic	0	0						
Diabetic education	0	0						
Endocrinology	0	0						
Endoscopy	0	0						
ENT	0	0						
Family planning	0	0						
Fertility	0	0						
Gastroenterology	0	0						
General medicine	0	0						
General surgery	0	0						
Geriatrics	0	0						
Gynaecology	0	0						
Haematology	0	0						
Hepatology	0	0						
Hyperbaric	0	0						
Immunology	0	0						
Infectious diseases	0	0						
Menopause	0	0						
Neurogenetic	0	0						
Neurology	52	61						
Neurosurgery	0	0						
Oncology	0	0						
Ophthalmology	0	0						
Oral surgery	0	0						
Orthopaedics - trauma	0	0						
Orthopaedics	163	228						
Osteoporosis	0	0						

WA Outpatient Quarterly Report, June 2009 Quarter

**Table A-13: Quarterly new outpatient appointments by specialty, Royal Perth Rehabilitation Hospital, March 2009 quarter - June 2009 quarter (continued)**

	2009				2010			
	Qtr 1	Qtr 2	Qtr 3	Qtr 4	Qtr 1	Qtr 2	Qtr 3	Qtr 4
Paediatric neurology	0	0						
Paediatric surgery	0	0						
Paediatrics	0	0						
Pain	124	135						
Palliative care	0	0						
Plastic dressings	0	0						
Plastic surgery	0	0						
Podiatry	11	11						
Preadmission	329	351						
Radiation oncology	0	0						
Radiotherapy	0	0						
Rehabilitation engineering	0	0						
Rehabilitation medicine	48	52						
Renal	0	0						
Respiratory medicine	0	0						
Rheumatology	55	87						
Scoliosis	49	64						
Sexual health	0	0						
Spinal	240	254						
Thoracic medicine	0	0						
Ulcer	0	0						
Urology	109	115						
Vascular surgery	0	0						
<b>Total</b>	<b>1,205</b>	<b>1,382</b>						

WA Outpatient Quarterly Report, June 2009 Quarter

Table A-14: Quarterly new outpatient appointments by specialty, Fremantle Hospital, March 2007 quarter - December 2008 quarter

	2007				2008			
	Qtr 1	Qtr 2	Qtr 3	Qtr 4	Qtr 1	Qtr 2	Qtr 3	Qtr 4
Adolescent	0	0	0	0	0	0	0	0
Amputee	17	21	15	4	6	5	8	12
Anaesthetic	1	0	0	132	1682	1679	1580	1766
Antenatal	239	266	274	246	258	295	296	338
Breast clinic	0	0	0	0	0	0	0	0
Burns	0	0	0	0	0	0	0	0
Cardiology	95	100	87	87	74	98	108	123
Cardiothoracic	52	52	49	55	57	72	65	61
Colorectal	0	0	0	0	0	0	0	0
Colposcopy	0	0	0	0	0	0	0	0
Dental	0	0	0	0	0	0	0	0
Dermatology	137	135	148	137	116	146	213	173
Developmental	0	0	0	0	0	0	0	0
Diabetic	27	28	29	28	18	25	45	36
Diabetic education	162	160	163	133	172	178	174	142
Endocrinology	28	44	45	44	37	48	49	42
Endoscopy	0	0	0	0	0	0	0	0
ENT	262	300	356	262	226	242	407	312
Family planning	0	0	0	0	0	0	0	0
Fertility	0	0	0	0	0	0	0	0
Gastroenterology	195	196	217	185	188	262	249	225
General medicine	61	64	76	66	61	78	62	36
General surgery	255	356	427	376	329	376	363	345
Geriatrics	0	0	0	0	0	0	0	0
Gynaecology	89	84	108	96	129	137	181	132
Haematology	62	50	60	72	61	95	82	82
Hepatology	0	0	0	0	0	0	0	0
Hyperbaric	27	32	28	35	29	29	16	26
Immunology	97	121	100	87	93	130	117	105
Infectious diseases	300	320	347	299	296	337	283	284
Menopause	0	0	0	0	0	0	0	0
Neurogenetic	0	0	0	0	0	0	0	0
Neurology	251	209	239	167	281	373	412	335
Neurosurgery	0	0	0	0	0	0	0	0
Oncology	82	82	74	82	77	77	60	78
Ophthalmology	263	242	457	333	343	407	414	357
Oral surgery	19	15	9	22	74	71	85	78
Orthopaedics - trauma	0	0	0	0	0	0	0	0
Orthopaedics	1180	1173	713	497	386	539	581	627
Osteoporosis	0	0	0	0	0	0	0	0

WA Outpatient Quarterly Report, June 2009 Quarter

**Table A-14: Quarterly new outpatient appointments by specialty, Fremantle Hospital, March 2007 quarter - December 2008 quarter (continued)**

	2007				2008			
	Qtr 1	Qtr 2	Qtr 3	Qtr 4	Qtr 1	Qtr 2	Qtr 3	Qtr 4
Paediatric neurology	7	5	6	7	7	9	5	5
Paediatric surgery	19	14	14	11	15	20	17	21
Paediatrics	26	37	55	39	37	62	61	66
Pain	26	28	55	307	247	366	364	514
Palliative care	0	0	0	0	0	0	0	0
Plastic dressings	0	0	0	0	0	0	0	0
Plastic surgery	71	73	85	75	68	56	67	150
Podiatry	0	0	0	0	0	0	0	0
Preadmission	0	0	0	0	0	0	0	0
Radiation oncology	73	78	54	34	58	54	65	66
Radiotherapy	0	0	0	0	0	0	0	0
Rehabilitation engineering	0	0	0	0	0	0	0	0
Rehabilitation medicine	0	0	0	0	0	0	0	0
Renal	84	112	94	97	139	90	91	90
Respiratory medicine	0	0	0	0	0	0	0	0
Rheumatology	55	62	43	37	46	66	60	38
Scoliosis	0	0	0	0	0	0	0	0
Sexual health	0	0	0	0	0	0	0	0
Spinal	0	0	0	0	0	0	0	0
Thoracic medicine	57	89	67	90	63	97	81	101
Ulcer	20	25	26	32	25	30	32	35
Urology	205	204	202	200	194	289	333	287
Vascular surgery	125	106	115	92	97	113	115	116
<b>Total</b>	<b>4,669</b>	<b>4,883</b>	<b>4,837</b>	<b>4,466</b>	<b>5,989</b>	<b>6,951</b>	<b>7,141</b>	<b>7,204</b>

WA Outpatient Quarterly Report, June 2009 Quarter

**Table A-15: Quarterly new outpatient appointments by specialty, Fremantle Hospital, March 2009 quarter - June 2009 quarter**

	2009				2010			
	Qtr 1	Qtr 2	Qtr 3	Qtr 4	Qtr 1	Qtr 2	Qtr 3	Qtr 4
Adolescent	0	0						
Amputee	21	10						
Anaesthetic	1841	1815						
Antenatal	408	362						
Breast clinic	0	0						
Burns	0	0						
Cardiology	131	135						
Cardiothoracic	57	57						
Colorectal	0	0						
Colposcopy	0	0						
Dental	0	0						
Dermatology	174	177						
Developmental	0	0						
Diabetic	37	35						
Diabetic education	141	240						
Endocrinology	50	63						
Endoscopy	0	0						
ENT	379	357						
Family planning	0	0						
Fertility	0	0						
Gastroenterology	204	183						
General medicine	64	52						
General surgery	414	414						
Geriatrics	0	0						
Gynaecology	170	139						
Haematology	67	98						
Hepatology	0	0						
Hyperbaric	25	29						
Immunology	114	110						
Infectious diseases	339	301						
Menopause	0	0						
Neurogenetic	0	0						
Neurology	321	367						
Neurosurgery	0	0						
Oncology	71	68						
Ophthalmology	351	402						
Oral surgery	73	69						
Orthopaedics - trauma	0	0						
Orthopaedics	679	736						
Osteoporosis	0	0						

WA Outpatient Quarterly Report, June 2009 Quarter

**Table A-15: Quarterly new outpatient appointments by specialty, Fremantle Hospital, March 2009 quarter - June 2009 quarter (continued)**

	2009				2010			
	Qtr 1	Qtr 2	Qtr 3	Qtr 4	Qtr 1	Qtr 2	Qtr 3	Qtr 4
Paediatric neurology	7	6						
Paediatric surgery	29	20						
Paediatrics	87	69						
Pain	567	332						
Palliative care	0	0						
Plastic dressings	0	0						
Plastic surgery	118	192						
Podiatry	0	0						
Preadmission	0	0						
Radiation oncology	50	50						
Radiotherapy	0	0						
Rehabilitation engineering	0	0						
Rehabilitation medicine	0	0						
Renal	101	109						
Respiratory medicine	0	0						
Rheumatology	61	59						
Scoliosis	0	0						
Sexual health	0	0						
Spinal	0	0						
Thoracic medicine	90	110						
Ulcer	32	23						
Urology	360	263						
Vascular surgery	131	116						
<b>Total</b>	<b>7,764</b>	<b>7,568</b>						

WA Outpatient Quarterly Report, June 2009 Quarter

Table A-16: Quarterly new outpatient appointments by specialty, Sir Charles Gairdner Hospital, March 2007 quarter - December 2008 quarter

	2007				2008			
	Qtr 1	Qtr 2	Qtr 3	Qtr 4	Qtr 1	Qtr 2	Qtr 3	Qtr 4
Adolescent	0	0	0	0	0	0	0	0
Amputee	0	0	0	0	0	0	0	0
Anaesthetic	0	0	0	0	0	0	0	0
Antenatal	0	0	0	0	0	0	0	0
Breast clinic	192	232	220	224	209	239	228	276
Burns	0	0	0	0	0	0	0	0
Cardiology	100	119	104	114	97	111	91	112
Cardiothoracic	0	0	0	0	0	0	0	0
Colorectal	0	0	0	0	0	0	0	0
Colposcopy	0	0	0	0	0	0	0	0
Dental	0	0	0	0	0	0	0	0
Dermatology	103	153	99	153	149	204	213	138
Developmental	0	0	0	0	0	0	0	0
Diabetic	89	92	87	95	89	115	135	105
Diabetic education	0	0	0	0	0	0	0	0
Endocrinology	63	75	88	87	68	89	80	75
Endoscopy	0	0	0	0	0	0	0	0
ENT	354	291	330	313	255	264	314	323
Family planning	0	0	0	0	0	0	0	0
Fertility	0	0	0	0	0	0	0	0
Gastroenterology	72	54	52	51	63	94	81	32
General medicine	51	54	40	55	44	53	49	46
General surgery	323	367	359	297	270	347	363	314
Geriatrics	146	138	164	112	135	121	144	109
Gynaecology	0	0	0	0	0	0	0	0
Haematology	113	91	100	127	97	124	120	106
Hepatology	90	94	121	84	107	115	118	96
Hyperbaric	0	0	0	0	0	0	0	0
Immunology	71	86	96	85	96	119	93	91
Infectious diseases	7	13	14	14	13	15	12	9
Menopause	0	0	0	0	0	0	0	0
Neurogenetic	0	0	0	0	0	0	0	0
Neurology	136	144	147	155	116	164	167	157
Neurosurgery	330	319	409	441	470	630	608	535
Oncology	190	172	311	376	342	344	457	232
Ophthalmology	290	353	371	266	286	332	346	397
Oral surgery	0	0	0	0	0	0	0	0
Orthopaedics - trauma	0	0	0	0	0	0	0	0
Orthopaedics	310	272	332	307	214	274	245	292
Osteoporosis	0	0	0	0	0	0	0	0

WA Outpatient Quarterly Report, June 2009 Quarter

**Table A-16: Quarterly new outpatient appointments by specialty, Sir Charles Gairdner Hospital, March 2007 quarter - December 2008 quarter (continued)**

	2007				2008			
	Qtr 1	Qtr 2	Qtr 3	Qtr 4	Qtr 1	Qtr 2	Qtr 3	Qtr 4
Paediatric neurology	0	0	0	0	0	0	0	0
Paediatric surgery	0	0	0	0	0	0	0	0
Paediatrics	0	0	0	0	0	0	0	0
Pain	174	171	134	152	178	235	231	133
Palliative care	19	23	20	31	35	31	30	17
Plastic dressings	739	670	700	691	596	629	650	694
Plastic surgery	255	259	240	236	157	258	254	247
Podiatry	176	152	146	121	177	221	145	73
Preadmission	11	31	13	21	20	21	9	2
Radiation oncology	0	0	0	0	0	0	0	0
Radiotherapy	444	441	489	488	433	478	475	541
Rehabilitation engineering	0	0	0	0	0	0	0	0
Rehabilitation medicine	0	0	0	0	0	0	0	0
Renal	77	75	80	84	79	107	71	92
Respiratory medicine	104	93	93	101	132	146	154	150
Rheumatology	92	76	82	73	78	85	96	99
Scoliosis	0	0	0	0	0	0	0	0
Sexual health	0	0	0	0	0	0	0	0
Spinal	0	0	0	0	0	0	0	0
Thoracic medicine	56	52	56	49	45	67	57	46
Ulcer	0	0	0	0	0	0	0	0
Urology	109	116	122	108	95	229	174	177
Vascular surgery	111	83	100	68	110	100	81	75
<b>Total</b>	<b>5,397</b>	<b>5,361</b>	<b>5,719</b>	<b>5,579</b>	<b>5,255</b>	<b>6,361</b>	<b>6,291</b>	<b>5,791</b>

WA Outpatient Quarterly Report, June 2009 Quarter

**Table A-17: Quarterly new outpatient appointments by specialty, Sir Charles Gairdner Hospital, March 2009 quarter - June 2009 quarter**

	2009				2010			
	Qtr 1	Qtr 2	Qtr 3	Qtr 4	Qtr 1	Qtr 2	Qtr 3	Qtr 4
Adolescent	0	0						
Amputee	0	0						
Anaesthetic	0	0						
Antenatal	0	0						
Breast clinic	247	557						
Burns	0	0						
Cardiology	93	102						
Cardiothoracic	0	0						
Colorectal	0	0						
Colposcopy	0	0						
Dental	0	0						
Dermatology	188	169						
Developmental	0	0						
Diabetic	87	99						
Diabetic education	0	0						
Endocrinology	78	107						
Endoscopy	0	0						
ENT	388	345						
Family planning	0	0						
Fertility	0	0						
Gastroenterology	36	52						
General medicine	40	45						
General surgery	300	355						
Geriatrics	139	112						
Gynaecology	0	0						
Haematology	135	131						
Hepatology	134	142						
Hyperbaric	0	0						
Immunology	102	106						
Infectious diseases	3	10						
Menopause	0	0						
Neurogenetic	0	0						
Neurology	111	135						
Neurosurgery	474	508						
Oncology	279	273						
Ophthalmology	345	355						
Oral surgery	0	0						
Orthopaedics - trauma	0	0						
Orthopaedics	385	707						
Osteoporosis	0	0						

WA Outpatient Quarterly Report, June 2009 Quarter

Table A-17: Quarterly new outpatient appointments by specialty, Sir Charles Gairdner Hospital, March 2009 quarter - June 2009 quarter (continued)

	2009				2010			
	Qtr 1	Qtr 2	Qtr 3	Qtr 4	Qtr 1	Qtr 2	Qtr 3	Qtr 4
Paediatric neurology	0	0						
Paediatric surgery	0	0						
Paediatrics	0	0						
Pain	160	230						
Palliative care	42	31						
Plastic dressings	617	703						
Plastic surgery	250	240						
Podiatry	126	157						
Preadmission	0	0						
Radiation oncology	0	0						
Radiotherapy	482	487						
Rehabilitation engineering	0	0						
Rehabilitation medicine	0	0						
Renal	101	76						
Respiratory medicine	175	172						
Rheumatology	92	97						
Scoliosis	0	0						
Sexual health	0	0						
Spinal	0	0						
Thoracic medicine	50	32						
Ulcer	0	0						
Urology	153	188						
Vascular surgery	72	67						
<b>Total</b>	<b>5,884</b>	<b>6,790</b>						

WA Outpatient Quarterly Report, June 2009 Quarter

Table A-18: Quarterly new outpatient appointments by specialty, Princess Margaret Hospital, March 2007 quarter - December 2008 quarter

	2007				2008			
	Qtr 1	Qtr 2	Qtr 3	Qtr 4	Qtr 1	Qtr 2	Qtr 3	Qtr 4
Adolescent	0	0	0	0	0	0	0	0
Amputee	0	0	0	0	0	0	0	0
Anaesthetic	0	1	0	0	0	0	0	0
Antenatal	0	0	0	0	0	0	0	0
Breast clinic	0	0	0	0	0	0	0	0
Burns	92	74	40	28	37	45	70	38
Cardiology	120	101	114	91	132	106	102	144
Cardiothoracic	0	0	0	0	0	0	0	0
Colorectal	0	0	0	0	0	0	0	0
Colposcopy	0	0	0	0	0	0	0	0
Dental	0	0	0	0	0	0	0	0
Dermatology	134	99	152	108	125	114	126	139
Developmental	77	63	80	60	50	71	97	89
Diabetic	0	0	0	0	0	0	0	0
Diabetic education	0	0	0	0	0	0	0	0
Endocrinology	64	57	61	58	49	65	61	45
Endoscopy	0	0	0	0	0	0	0	0
ENT	371	387	376	441	415	393	387	341
Family planning	0	0	0	0	0	0	0	0
Fertility	0	0	0	0	0	0	0	0
Gastroenterology	90	99	81	74	65	113	89	100
General medicine	316	316	378	297	321	294	283	255
General surgery	301	340	264	279	214	305	290	226
Geriatrics	0	0	0	0	0	0	0	0
Gynaecology	17	19	14	18	19	8	17	8
Haematology	25	22	31	23	28	31	36	36
Hepatology	0	0	0	0	0	0	0	0
Hyperbaric	0	0	0	0	0	0	0	0
Immunology	158	226	273	214	266	229	189	114
Infectious diseases	0	0	0	0	0	0	0	0
Menopause	0	0	0	0	0	0	0	0
Neurogenetic	0	0	0	0	0	0	0	0
Neurology	73	94	120	92	122	138	119	114
Neurosurgery	10	24	35	31	34	27	27	21
Oncology	31	30	6	18	8	13	11	11
Ophthalmology	131	143	160	152	296	396	366	318
Oral surgery	0	0	0	0	0	0	0	0
Orthopaedics - trauma	0	0	0	0	0	0	0	0
Orthopaedics	271	293	321	769	857	1032	945	996
Osteoporosis	0	0	0	0	0	0	0	0

**Table A-18: Quarterly new outpatient appointments by specialty, Princess Margaret Hospital, March 2007 quarter - December 2008 quarter (continued)**

	2007				2008			
	Qtr 1	Qtr 2	Qtr 3	Qtr 4	Qtr 1	Qtr 2	Qtr 3	Qtr 4
Paediatric neurology	0	0	0	0	0	0	0	0
Paediatric surgery	0	0	0	0	0	0	0	0
Paediatrics	0	0	0	0	0	0	0	0
Pain	0	0	0	0	0	0	0	0
Palliative care	0	0	0	0	0	0	0	0
Plastic dressings	0	0	0	0	0	0	0	0
Plastic surgery	135	172	140	174	170	513	686	679
Podiatry	0	0	0	0	0	0	0	0
Preadmission	0	0	0	0	0	0	0	0
Radiation oncology	0	0	0	0	0	0	0	0
Radiotherapy	0	0	0	0	0	0	0	0
Rehabilitation engineering	0	0	0	0	0	0	0	0
Rehabilitation medicine	0	0	0	0	0	0	0	0
Renal	38	59	42	36	36	47	55	29
Respiratory medicine	100	105	133	141	130	115	140	129
Rheumatology	49	37	46	42	39	33	60	45
Scoliosis	0	0	0	0	0	0	0	0
Sexual health	0	0	0	0	0	0	0	0
Spinal	0	0	0	0	0	0	0	0
Thoracic medicine	0	0	0	0	0	0	0	0
Ulcer	0	0	0	0	0	0	0	0
Urology	0	0	0	0	0	0	0	0
Vascular surgery	0	0	0	0	0	0	0	0
<b>Total</b>	<b>2,603</b>	<b>2,761</b>	<b>2,867</b>	<b>3,146</b>	<b>3,413</b>	<b>4,088</b>	<b>4,156</b>	<b>3,877</b>

WA Outpatient Quarterly Report, June 2009 Quarter

**Table A-19: Quarterly new outpatient appointments by specialty, Princess Margaret Hospital, March 2009 quarter - June 2009 quarter**

	2009				2010			
	Qtr 1	Qtr 2	Qtr 3	Qtr 4	Qtr 1	Qtr 2	Qtr 3	Qtr 4
Adolescent	0	0						
Amputee	0	0						
Anaesthetic	0	0						
Antenatal	0	0						
Breast clinic	0	0						
Burns	62	51						
Cardiology	166	167						
Cardiothoracic	0	0						
Colorectal	0	0						
Colposcopy	0	0						
Dental	0	0						
Dermatology	121	150						
Developmental	78	85						
Diabetic	0	0						
Diabetic education	0	0						
Endocrinology	51	59						
Endoscopy	0	0						
ENT	485	470						
Family planning	0	0						
Fertility	0	0						
Gastroenterology	95	67						
General medicine	295	286						
General surgery	267	248						
Geriatrics	0	0						
Gynaecology	19	31						
Haematology	43	40						
Hepatology	0	0						
Hyperbaric	0	0						
Immunology	220	283						
Infectious diseases	0	0						
Menopause	0	0						
Neurogenetic	0	0						
Neurology	149	154						
Neurosurgery	31	32						
Oncology	12	13						
Ophthalmology	354	362						
Oral surgery	0	0						
Orthopaedics - trauma	0	0						
Orthopaedics	861	1120						
Osteoporosis	0	0						

WA Outpatient Quarterly Report, June 2009 Quarter

Table A-19: Quarterly new outpatient appointments by specialty, Princess Margaret Hospital, March 2009 quarter - June 2009 quarter (continued)

	2009				2010			
	Qtr 1	Qtr 2	Qtr 3	Qtr 4	Qtr 1	Qtr 2	Qtr 3	Qtr 4
Paediatric neurology	0	0						
Paediatric surgery	0	0						
Paediatrics	0	0						
Pain	0	0						
Palliative care	0	0						
Plastic dressings	0	0						
Plastic surgery	578	799						
Podiatry	0	0						
Preadmission	0	0						
Radiation oncology	0	0						
Radiotherapy	0	0						
Rehabilitation engineering	0	0						
Rehabilitation medicine	0	0						
Renal	31	30						
Respiratory medicine	122	134						
Rheumatology	67	61						
Scoliosis	0	0						
Sexual health	0	0						
Spinal	0	0						
Thoracic medicine	0	0						
Ulcer	0	0						
Urology	0	0						
Vascular surgery	0	0						
<b>Total</b>	<b>4,107</b>	<b>4,642</b>						

WA Outpatient Quarterly Report, June 2009 Quarter

Table A-20: Quarterly new outpatient appointments by specialty, King Edward Memorial Hospital, March 2007 quarter - December 2008 quarter

	2007				2008			
	Qtr 1	Qtr 2	Qtr 3	Qtr 4	Qtr 1	Qtr 2	Qtr 3	Qtr 4
Adolescent	20	20	27	26	24	21	30	27
Amputee	0	0	0	0	0	0	0	0
Anaesthetic	0	0	0	0	0	0	0	0
Antenatal	1603	1618	1613	1684	1685	1520	1653	1456
Breast clinic	0	0	0	0	0	0	0	0
Burns	0	0	0	0	0	0	0	0
Cardiology	0	0	0	0	0	0	0	0
Cardiothoracic	0	0	0	0	0	0	0	0
Colorectal	0	0	0	0	0	0	0	0
Colposcopy	226	217	218	242	182	228	236	224
Dental	0	0	0	0	0	0	0	0
Dermatology	0	0	0	0	0	0	0	0
Developmental	0	0	0	0	0	0	0	0
Diabetic	0	0	0	0	0	0	0	0
Diabetic education	0	0	0	0	0	0	0	0
Endocrinology	0	0	0	0	0	0	0	0
Endoscopy	55	48	50	57	59	51	68	61
ENT	0	0	0	0	0	0	0	0
Family planning	34	45	42	38	31	42	47	39
Fertility	98	83	99	72	67	107	91	77
Gastroenterology	0	0	0	0	0	0	0	0
General medicine	0	0	0	0	0	0	0	0
General surgery	0	0	0	0	0	0	0	0
Geriatrics	0	0	0	0	0	0	0	0
Gynaecology	567	549	533	585	523	560	565	553
Haematology	0	0	0	0	0	0	0	0
Hepatology	0	0	0	0	0	0	0	0
Hyperbaric	0	0	0	0	0	0	0	0
Immunology	0	0	0	0	0	0	0	0
Infectious diseases	0	0	0	0	0	0	0	0
Menopause	82	62	<b>82</b>	<b>76</b>	<b>74</b>	<b>89</b>	<b>91</b>	<b>98</b>
Neurogenetic	0	0	0	0	0	0	0	0
Neurology	0	0	0	0	0	0	0	0
Neurosurgery	0	0	0	0	0	0	0	0
Oncology	110	91	108	104	79	149	183	171
Ophthalmology	0	0	0	0	0	0	0	0
Oral surgery	0	0	0	0	0	0	0	0
Orthopaedics - trauma	0	0	0	0	0	0	0	0
Orthopaedics	0	0	0	0	0	0	0	0
Osteoporosis	0	0	0	0	0	0	0	0

WA Outpatient Quarterly Report, June 2009 Quarter

Table A-20: Quarterly new outpatient appointments by specialty, King Edward Memorial Hospital, March 2007 quarter - December 2008 quarter (continued)

	2007				2008			
	Qtr 1	Qtr 2	Qtr 3	Qtr 4	Qtr 1	Qtr 2	Qtr 3	Qtr 4
Paediatric neurology	0	0	0	0	0	0	0	0
Paediatric surgery	0	0	0	0	0	0	0	0
Paediatrics	0	0	0	0	0	0	0	0
Pain	0	0	0	0	0	0	0	0
Palliative care	0	0	0	0	0	0	0	0
Plastic dressings	0	0	0	0	0	0	0	0
Plastic surgery	0	0	0	0	0	0	0	0
Podiatry	0	0	0	0	0	0	0	0
Preadmission	0	0	0	0	0	0	0	0
Radiation oncology	0	0	0	0	0	0	0	0
Radiotherapy	0	0	0	0	0	0	0	0
Rehabilitation engineering	0	0	0	0	0	0	0	0
Rehabilitation medicine	0	0	0	0	0	0	0	0
Renal	0	0	0	0	0	0	0	0
Respiratory medicine	0	0	0	0	0	0	0	0
Rheumatology	0	0	0	0	0	0	0	0
Scoliosis	0	0	0	0	0	0	0	0
Sexual health	10	24	23	19	17	19	15	24
Spinal	0	0	0	0	0	0	0	0
Thoracic medicine	0	0	0	0	0	0	0	0
Ulcer	0	0	0	0	0	0	0	0
Urology	87	58	54	60	67	76	63	76
Vascular surgery	0	0	0	0	0	0	0	0
<b>Total</b>	<b>2,892</b>	<b>2,815</b>	<b>2,849</b>	<b>2,963</b>	<b>2,808</b>	<b>2,862</b>	<b>3,042</b>	<b>2,806</b>

WA Outpatient Quarterly Report, June 2009 Quarter

Table A-21: Quarterly new outpatient appointments by specialty, King Edward Memorial Hospital, March 2009 quarter - June 2009 quarter

	2009				2010			
	Qtr 1	Qtr 2	Qtr 3	Qtr 4	Qtr 1	Qtr 2	Qtr 3	Qtr 4
Adolescent	0	0						
Amputee	0	0						
Anaesthetic	0	0						
Antenatal	1688	1590						
Breast clinic	0	0						
Burns	0	0						
Cardiology	0	0						
Cardiothoracic	0	0						
Colorectal	0	0						
Colposcopy	256	312						
Dental	0	0						
Dermatology	0	0						
Developmental	0	0						
Diabetic	0	0						
Diabetic education	0	0						
Endocrinology	0	0						
Endoscopy	66	56						
ENT	0	0						
Family planning	44	48						
Fertility	62	76						
Gastroenterology	0	0						
General medicine	0	0						
General surgery	0	0						
Geriatrics	0	0						
Gynaecology	575	575						
Haematology	0	0						
Hepatology	0	0						
Hyperbaric	0	0						
Immunology	0	0						
Infectious diseases	0	0						
Menopause	100	88						
Neurogenetic	0	0						
Neurology	0	0						
Neurosurgery	0	0						
Oncology	160	127						
Ophthalmology	0	0						
Oral surgery	0	0						
Orthopaedics - trauma	0	0						
Orthopaedics	0	0						
Osteoporosis	0	0						

WA Outpatient Quarterly Report, June 2009 Quarter

Table A-21: Quarterly new outpatient appointments by specialty, King Edward Memorial Hospital, March 2009 quarter - June 2009 quarter (continued)

	2009				2010			
	Qtr 1	Qtr 2	Qtr 3	Qtr 4	Qtr 1	Qtr 2	Qtr 3	Qtr 4
Paediatric neurology	0	0						
Paediatric surgery	0	0						
Paediatrics	0	0						
Pain	0	0						
Palliative care	0	0						
Plastic dressings	0	0						
Plastic surgery	0	0						
Podiatry	0	0						
Preadmission	0	0						
Radiation oncology	0	0						
Radiotherapy	0	0						
Rehabilitation engineering	0	0						
Rehabilitation medicine	0	0						
Renal	0	0						
Respiratory medicine	0	0						
Rheumatology	0	0						
Scoliosis	0	0						
Sexual health	13	20						
Spinal	0	0						
Thoracic medicine	0	0						
Ulcer	0	0						
Urology	52	62						
Vascular surgery	0	0						
<b>Total</b>	<b>3,016</b>	<b>2,954</b>						

## Notes

### Data extraction date

All data in this report is based on appointments to the end of the last day in each month or quarter extracted from the TOPAS data system, a subset of all outpatient appointments.

### Data revision

Minor variations for totals published in previous reports are likely to occur as the outpatient databases are continuously updated. Variations may occur for a number of reasons, such as updates to procedure codes, lags in data processing or other types of errors detected after publication.

Therefore, the most recent edition of a report should always be consulted, as data is not revised in previously published editions of a report.

### Data exclusion

Counts are based on comparable specialties for both teaching and non teaching hospitals. This means, for example, that some types of appointments, such as physiotherapy are not counted. As the data in this report refers to only medical and surgical outpatient activity, it does not include data related to allied health and diagnostic outpatient services.

### Metropolitan public hospitals

The term 'metropolitan public hospital' refers to the public hospitals which are located in the North Metropolitan and South Metropolitan Area Health Services.

### Booked appointments

Due to inconsistencies in the data system that reports and tracks booked appointments for outpatient services, separate data is provided with respect to both first and new appointments.

### First appointment

A first appointment refers to an appointment where a patient has never before attended a clinic of that specialty at that hospital.

### New appointment

New appointments can have multiple entries, as the appointment recording system allocates a maximum of 45 minutes per appointment. If a further extended appointment is required, this attendance is also recorded as a 'new' appointment until a follow up session is required.

### Follow up appointment

A follow up appointment refers to a subsequent appointment and is typically shorter than a new appointment, eg 15 to 20 mins in duration.

### Specialty

The list of outpatient specialties refers to clinically related provision of services as defined by each hospital.

### Definition of appointment

Attendance at an outpatient appointment is based on counts of medical and surgical appointments, as defined in field SB19 in the Outpatient Database.

### Teaching hospital

Encompasses the five adult metropolitan teaching hospitals (ie Royal Perth Hospital, Royal Perth Hospital Shenton Campus, Sir Charles Gairdner Hospital, Fremantle Hospital and King Edward Memorial Hospital) and the metropolitan children's hospital (ie Princess Margaret Hospital).