



Outpatient Monthly Activity Western Australian Metropolitan Hospitals September 2009

© Department of Health, Western Australia

This work is copyright. Apart from any use as permitted under the *Copyright Act 1968*, no part may be reproduced without prior written permission from the Department of Health, Western Australia.

Requests and enquiries concerning reproduction and rights should be directed to -

Performance Reporting Branch
Information Management & Reporting Directorate
Department of Health, Western Australia
PO Box 8172 Perth Business Centre
Western Australia 6849

A list of the Department's publications concerning outpatient activity is available from -
www.health.wa.gov.au/ElectiveSurgery/waitinglist/

ISSN 1836-9677 (print)

Suggested citation

Department of Health, Western Australia.
Outpatient Monthly Activity, WA Metropolitan Hospitals: September 2009.
Perth: Performance Reporting Branch, Information Management & Reporting Directorate
Department of Health, 2009.

Report produced by

Performance Reporting Branch, Information Management & Reporting Directorate,
Health Information Network, Department of Health

Copies of this publication available at:

www.health.wa.gov.au/ElectiveSurgery/waitinglist/

Table of Contents

| | |
|-----------------------------------|-----|
| Introduction..... | 1 |
| 1. All Hospitals | |
| 1.1 Types of appointments | |
| New appointments..... | 1 |
| Follow up appointments | 1 |
| First appointments | 1 |
| Did not attend appointments | 2 |
| Total appointments..... | 2 |
| 1.2 Waiting times | 2 |
| 2. Specific Hospitals | |
| 2.1 Appointments | |
| All appointments..... | 3 |
| First appointments | 3 |
| Did not attend appointments | 3 |
| New appointments..... | 3 |
| 2.1 Waiting times | 4 |
| Appendix tables | A-1 |

Key Points: September 2008 to September 2009

Activity

At all metropolitan teaching hospitals, total appointments (ie did not attend (DNA), new and follow up) grew from 54,041 to 57,735, an increase of 6.8%.

Waiting times

For first time appointments at all metropolitan teaching hospitals:

- median waiting time declined by 2 days from 27 to 25 days, a reduction of 7.4%;
- mean waiting time declined by 13 days from 96 to 83 days, a reduction of 13.5%; and
- waiting time at 90th percentile declined by 26 days from 189 to 163 days, a reduction of 13.8%.

Appointments

At all metropolitan teaching hospitals:

- new appointments grew by 967, from 10,975 to 11,942, an increase of 8.8%;
- follow up appointments grew by 2,154, from 35,281 to 37,435, an increase of 6.1%; and
- DNA appointments grew by 573, from 7,785 to 8,358, an increase of 7.4%.

List of Tables

| | | |
|----------|---|---|
| Table 1: | Counts of new, follow up & first outpatient appointments & waiting times for first appointments at all metropolitan teaching hospitals, WA: September 2008, August 2009 & September 2009..... | 1 |
| Table 2: | Counts of total (new, follow up & DNA) outpatient appointments at all metropolitan teaching hospitals, WA: September 2008, August 2009 & September 2009 | 2 |

List of Appendix Tables

| | | |
|-------------|---|------|
| Table A-1: | All (new & follow up) outpatient appointments at metropolitan teaching hospitals, WA, January 2007 - September 2009..... | A-1 |
| Table A-2: | New outpatient appointments at metropolitan teaching hospitals, WA, January 2007 - September 2009 | A-2 |
| Table A-3: | Follow up outpatient appointments at metropolitan teaching hospitals, WA, January 2007 - September 2009 | A-3 |
| Table A-4: | First outpatient appointments at metropolitan teaching hospitals, WA, January 2007 - September 2009 | A-4 |
| Table A-5: | Did not attend outpatient appointments at metropolitan teaching hospitals, WA, January 2007 - September 2009 | A-5 |
| Table A-6: | Proportion (%) of all appointments that were new outpatient appointments at metropolitan teaching hospitals, WA, January 2007 - September 2009..... | A-6 |
| Table A-7: | Proportion (%) of total appointments that were DNA outpatient appointments at metropolitan teaching hospitals, WA, January 2007 - September 2009..... | A-7 |
| Table A-8: | Median waiting time (days) of first time outpatient appointments at metropolitan teaching hospitals, WA, January 2007 - September 2009..... | A-8 |
| Table A-9: | Mean waiting time (days) of first time outpatient appointments at metropolitan teaching hospitals, WA, January 2007 - September 2009..... | A-9 |
| Table A-10: | 90th percentile waiting time (days) of first time outpatient appointments at metropolitan teaching hospitals, WA, January 2007 - September 2009..... | A-10 |
| Table A-11: | Total (DNA, new & follow up) outpatient appointments at metropolitan teaching hospitals, WA, January 2007 - September 2009..... | A-11 |

List of Figures

| | | |
|-----------|--|---|
| Figure 1: | All & new outpatient appointments & % new appointments at all metropolitan teaching hospitals, WA, January 2008 - September 2009..... | 2 |
| Figure 2: | First time outpatient appointments & waiting time (days) at all metropolitan teaching hospitals, WA, January 2008 - September 2009..... | 3 |
| Figure 3: | Number & proportion (%) of DNA outpatient appointments at all metropolitan teaching hospitals, WA, January 2008 - September 2009..... | 4 |
| Figure 4: | All outpatient appointments for selected metropolitan teaching hospitals, WA, January 2008 - September 2009 | 4 |
| Figure 5: | First time outpatient appointments for selected metropolitan teaching hospitals, WA, January 2008 - September 2009..... | 5 |
| Figure 6: | Proportion (%) of DNA outpatient appointments for selected metropolitan teaching hospitals, WA, January 2008 - September 2009..... | 5 |
| Figure 7: | Proportion (%) of new appointments for selected metropolitan teaching hospitals, WA, July 2007 - September 2009 | 6 |
| Figure 8: | Median waiting time (days) of first time outpatient appointments for selected metropolitan teaching hospitals, WA, January 2008 - September 2009 | 6 |

Abbreviations

| | |
|---------|---|
| AHS | Area Health Service |
| AIHW | Australian Institute of Health and Welfare |
| CAHS | Child and Adolescent Health Service |
| DNA | Did not attend |
| FH | Fremantle Hospital |
| JHC | Joondalup Health Campus |
| KEMH | King Edward Memorial Hospital |
| NA | Not available |
| NMAHS | North Metropolitan Area Health Service Includes: <i>Kalamunda Hospital, King Edward Memorial Hospital, Osborne Park Hospital, Sir Charles Gairdner Hospital and Swan District Hospital.</i> |
| PEARLS | Patient Electronic Analysis Referral Liaison System |
| PHC | Peel Health Campus |
| PMH | Princess Margaret Hospital for Children |
| qtr | Quarter |
| RPH | Royal Perth Hospital |
| RPH SPC | Royal Perth Hospital Shenton Park Campus (also known as RPH Rehabilitation Hospital) |
| SCGH | Sir Charles Gairdner Hospital |
| SMAHS | South Metropolitan Area Health Service Includes: <i>Armadale-Kelmscott Memorial Hospital, Bentley Hospital, Fremantle Hospital, Kaleeya Hospital, Rockingham General Hospital, Royal Perth Hospital and Royal Perth Rehabilitation Hospital.</i> |
| TOPAS | The Open Patient Administration System |
| WA | Western Australia |
| WACHS | Western Australian Country Health Service |

Glossary

Mean: This refers to the arithmetic mean, being the sum of all values in the list divided by the number of items in the list. The mean is the most commonly-used type of average and can also be referred to simply as the average.

Median: This refers to the value separating the higher half of a sample, a population, or a probability distribution, from the lower half. This statistic is used, in preference to the mean, when the distribution of the values is skewed by a small number of very high values.

90th percentile: This refers to the value in the list below which there are 90 percent of numbers and enables waiting times to be expressed as a percentile rank.

However, as percentile ranks are not on equal interval scales, the difference between any two scores is not the same as between any other two scores. For instance, the difference (25) between 90 and 65 is not the same as the difference (25) between 50 and 25 because of the position rank of a percentile is based on an assumed normal distribution of all values.

Symbols

- nil

Introduction

The main purpose of this report is to provide information about monthly attendances at outpatient clinics operating at the following metropolitan teaching hospitals:

- Royal Perth Hospital (RPH);
- RPH Shenton Park Campus (RPH SPC) - also known as the Royal Perth Rehabilitation Hospital;
- Sir Charles Gairdner Hospital (SCGH);
- Fremantle Hospital (FH);
- King Edward Memorial Hospital (KEMH); and
- Princess Margaret Hospital (PMH).

1. All Hospitals

This section provides a breakdown of data for number of outpatient appointments at all metropolitan teaching hospitals for the current reporting month compared to the previous month and the same month last year.

Time series data from January 2007 up to the current reporting month is provided in appendix data tables to identify and highlight longer term trends over the period.

1.1 Types of appointments

Table 1 shows that in September 2009 there were 49,377 follow up and new appointments - an increase of 700 compared to the previous month (48,677) and an increase of 3,121 over the same month last year (46,256).

See Table A-1 (page A-1) for a breakdown of all appointments by hospital.

New appointments

Table 1 shows in September 2009 there was a total of 11,942 new appointments - a decrease of

71 compared to the previous month (12,013) and an increase of 967 over the same month last year (10,975).

This table also shows the proportion of new appointments of all appointments was relatively constant over this period.

See Table A-2 (page A-2) for a breakdown of new appointments by hospital.

Figure 1 (page 2) provides an overview of trends in new and all appointments at all metropolitan teaching hospitals. This figure shows an overall upward trend in the proportion of new appointments - increasing from January 2008 (21.5%) to September 2009 (24.2%). See also Table A-6 (page A-6).

Follow up appointments

Table 1 shows that in September 2009 there was a total of 37,435 follow up appointments - an increase of 771 compared to the previous month (36,664) and an increase of 2,154 for the same month last year (35,281).

See Table A-3 (page A-3) for a breakdown of follow up appointments by hospital.

First appointments

Table 1 shows that in September 2009 there was a total of 10,563 first appointments - an increase of 3 compared to the previous month (10,560) and an increase 699 over the same month last year (9,864).

See Table A-4 (page A-4) for a breakdown of first appointments by hospital.

Figure 2 (page 3) provides an overview of trends in first appointments at all metropolitan teaching hospitals. This figure shows a pattern of seasonal variations in monthly appointments associated with the December and January holiday period in particular.

Table 1: Counts of new, follow up & first outpatient appointments & waiting times for first appointments at all metropolitan teaching hospitals, WA: September 2008, August 2009 & September 2009

| | Type of appointments | | | | First appointments | | | |
|----------------|----------------------|--------|------|--------|---------------------|------|-----------------|------------|
| | Follow up | New | | All | Waiting time (days) | | | Count n |
| | | n | % | | Median | Mean | 90th percentile | |
| September 2008 | 35,281 | 10,975 | 23.7 | 46,256 | 27 | 96 | 189 | 9,864 |
| August 2009 | 36,664 | 12,013 | 24.7 | 48,677 | 26 | 90 | 174 | 10,560 |
| September 2009 | 37,435 | 11,942 | 24.2 | 49,377 | 25 | 83 | 163 | 10,563 |

Did not attend appointments

Table 2 shows in September 2009 there were 8,358 DNA appointments - an increase of 510 compared to the previous month (7,848) and an increase of 573 over the same month last year (7,785).

See Table A-5 (page A-5) for a breakdown of DNA appointments by hospital.

Figure 3 (page 4) shows whilst there were short term fluctuations, overall the proportion of DNA appointments of total (ie new, follow up and DNA) appointments remained relatively constant over the period.

See also Table A-7 (page A-7) for a breakdown of the proportion of total appointments that were DNA appointments by hospital.

Table 2: Counts of total (new, follow up & DNA) outpatient appointments at all metropolitan teaching hospitals, WA: September 2008, August 2009 & September 2009

| | Type of appointment | | Total appointments |
|----------------|---------------------|------|--------------------|
| | Did not attend | | |
| | n | % | |
| September 2008 | 7,785 | 14.4 | 54,041 |
| August 2009 | 7,848 | 13.9 | 56,525 |
| September 2009 | 8,358 | 14.5 | 57,735 |

Total appointments

Table 2 contains a summation of total (ie new, follow up and DNA) appointments and shows that in September 2009 there was a total of 57,735 appointments - an increase of 1,210 compared to the previous month (56,525) and an increase of 3,694 over the same month last year (54,041).

See also Table A-11 (page A-11) for a breakdown of total appointments by hospital.

1.2 Waiting times

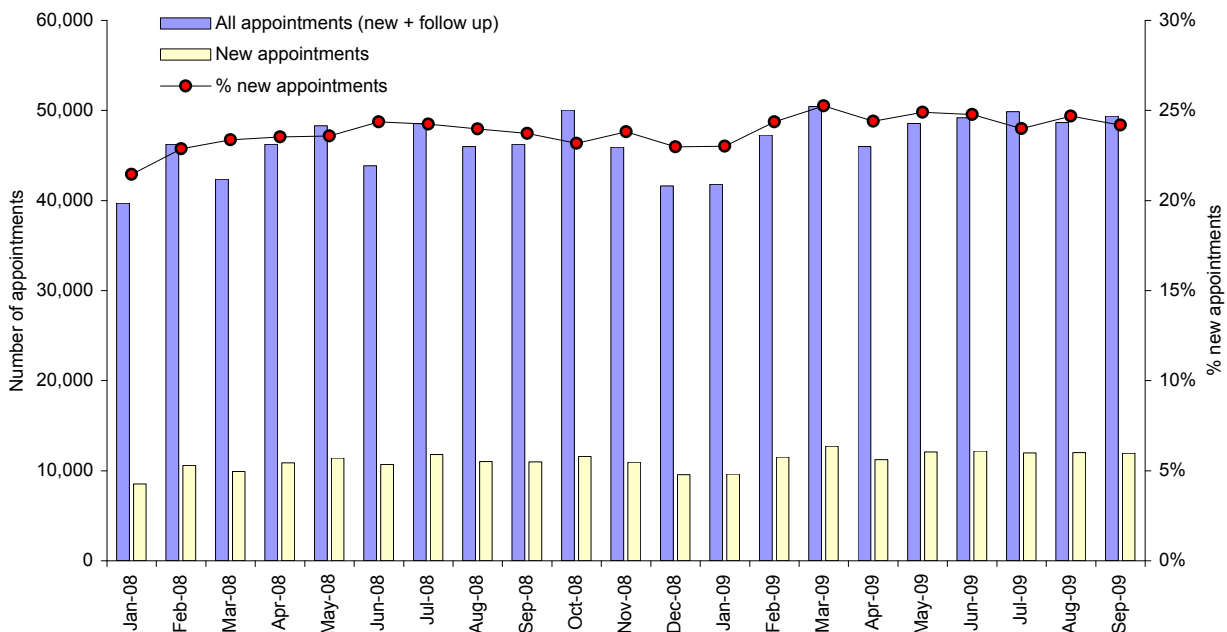
Table 1 (page 1) provides data on the median, mean and 90th percentile waiting time to first appointment at all metropolitan teaching hospitals.

See Figure 2 (page 3) for trends in the duration of waiting time in median and mean days to first appointment.

This figure shows that small reductions in waiting times are mostly associated with declines in first appointments, as previously noted, in the December and January holiday period.

See Tables A-8 to A-10 (pages A-8 to A-10) for a breakdown of waiting time to first appointment at the median, mean and 90th percentile by hospital.

Figure 1: All & new outpatient appointments & % new appointments at all metropolitan teaching hospitals, WA, January 2008 - September 2009



2. Specific Hospitals

This section provides a breakdown of outpatient appointments at RPH, SCGH, FH, KEMH and PMH up to the current reporting month.

It should be noted that some of the variation between hospitals is likely to be related to demographic, casemix and other factors.

2.1 Appointments

All appointments

Figure 4 (page 4) provides an overview of trends in all appointments for the five hospitals.

See also Table A-1 (page A-1) for a breakdown of data for each hospital.

First appointments

Figure 5 (page 5) provides an overview of trends in the number of first appointments for RPH, SCGH, FH, KEMH and PMH.

See also Table A-4 (page A-4) for a breakdown of first appointments for each hospital.

This data indicates marked increases occurred from January 2007 up to the present at PMH (from 772 to 1,509), SCGH (from 1,380 to 2,513) and FH (from 1,435 to 2,357), compared with the growth of 48.0% in appointments for all teaching hospitals (from 7,135 to 10,563).

Did not attend appointments

Figure 6 (page 5) provides an overview of trends in the proportion of DNA appointments of total (ie new, follow up and DNA) appointments for the five hospitals.

This figure indicates that, overall, higher proportions of DNA appointments were reported by RPH, KEMH and PMH compared to the rates for FH and SCGH.

See Table A-5 (page A-5) and Table A-7 (page A-7) for a breakdown of the number and proportion of DNA appointments by hospital.

New appointments

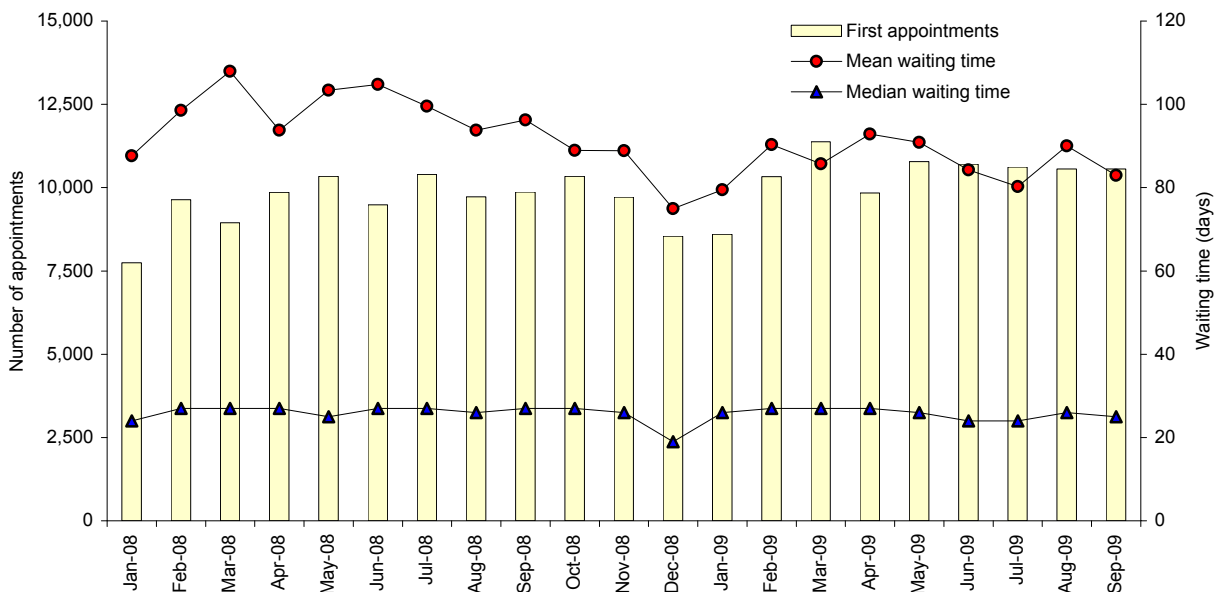
Figure 7 (page 6) provides an overview of trends in the proportion of new appointments of all (ie follow up and new) appointments for the five hospitals.

This figure shows that, overall, lower proportions of new appointments were reported by RPH and SCGH compared to the three other metropolitan teaching hospitals.

It can also be seen in Figure 7 that compared to the other teaching hospitals, the proportion of new appointments at PMH in particular has steadily increased up to the present.

See Table A-2 (page A-2) and Table A-6 (page A-6) for a breakdown of monthly number and proportion of new appointments by hospital.

Figure 2: First time outpatient appointments & waiting time (days) at all metropolitan teaching hospitals, WA, January 2008 - September 2009



2.1 Waiting times

Figure 8 (page 6) provides an overview of trends in median waiting time (days) to first appointment for RPH, SCGH, FH, KEMH and PMH.

Overall, the lowest median waiting times were reported by RPH compared to the other hospitals.

It can be seen whilst there was some convergence in median waiting time in the latter part of the period, somewhat higher waiting times were reported by KEMH and PMH.

See Table A-8 (page A-8) for a breakdown of median wait times for first appointments by hospital.

Figure 3: Number & proportion (%) of DNA outpatient appointments at all metropolitan teaching hospitals, WA, January 2008 - September 2009

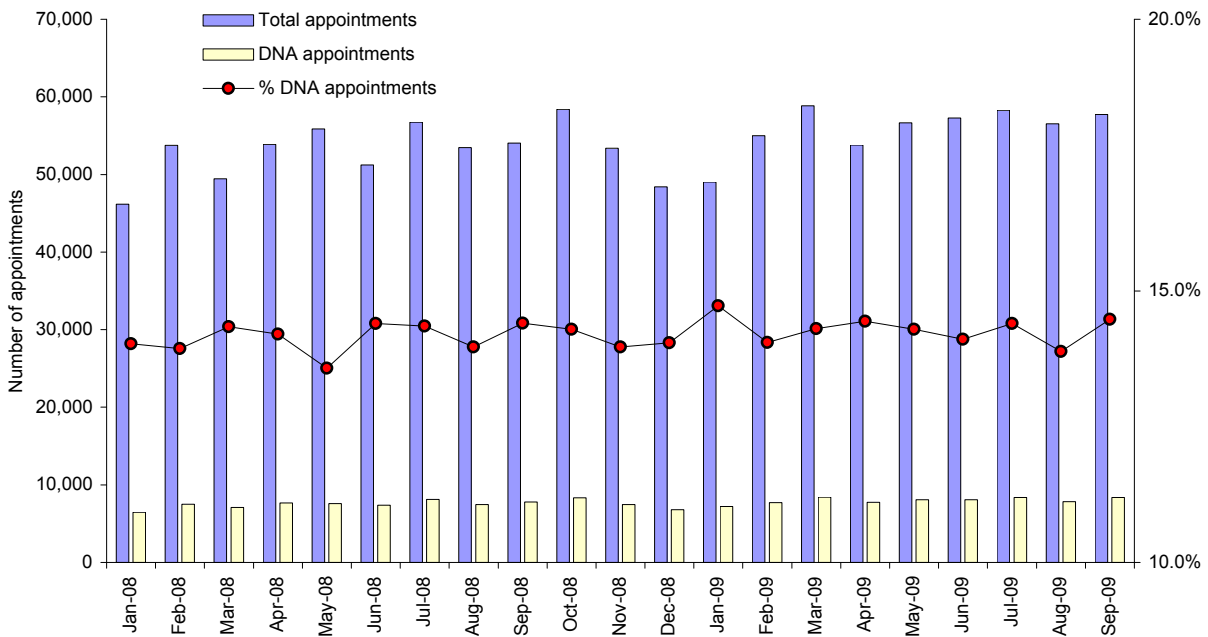


Figure 4: All outpatient appointments for selected metropolitan teaching hospitals, WA, January 2008 - September 2009

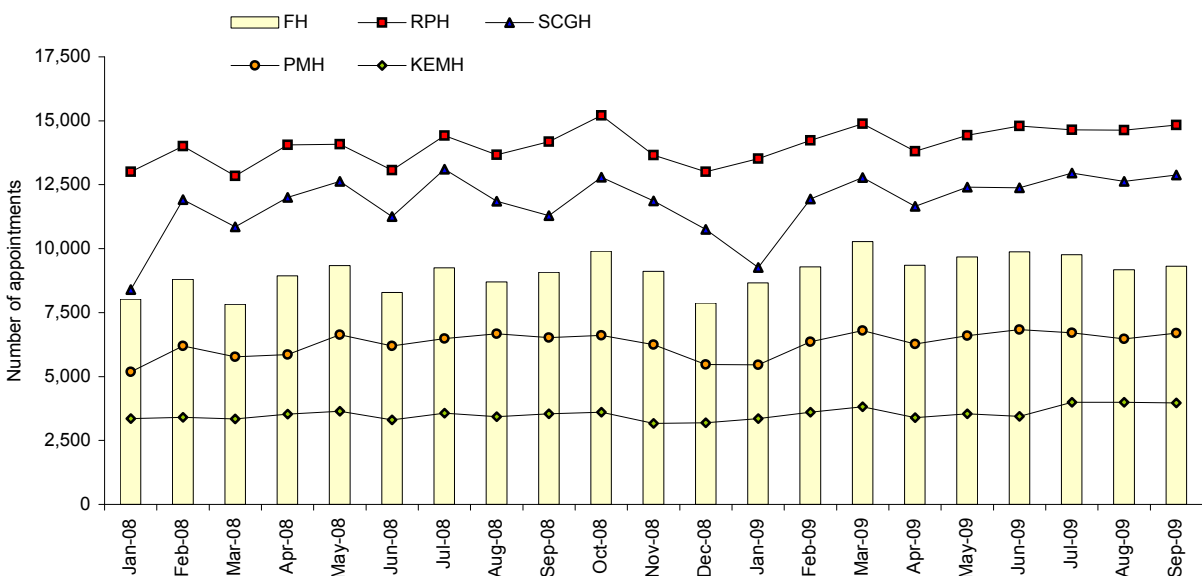


Figure 5: First time outpatient appointments for selected metropolitan teaching hospitals, WA, January 2008 - September 2009

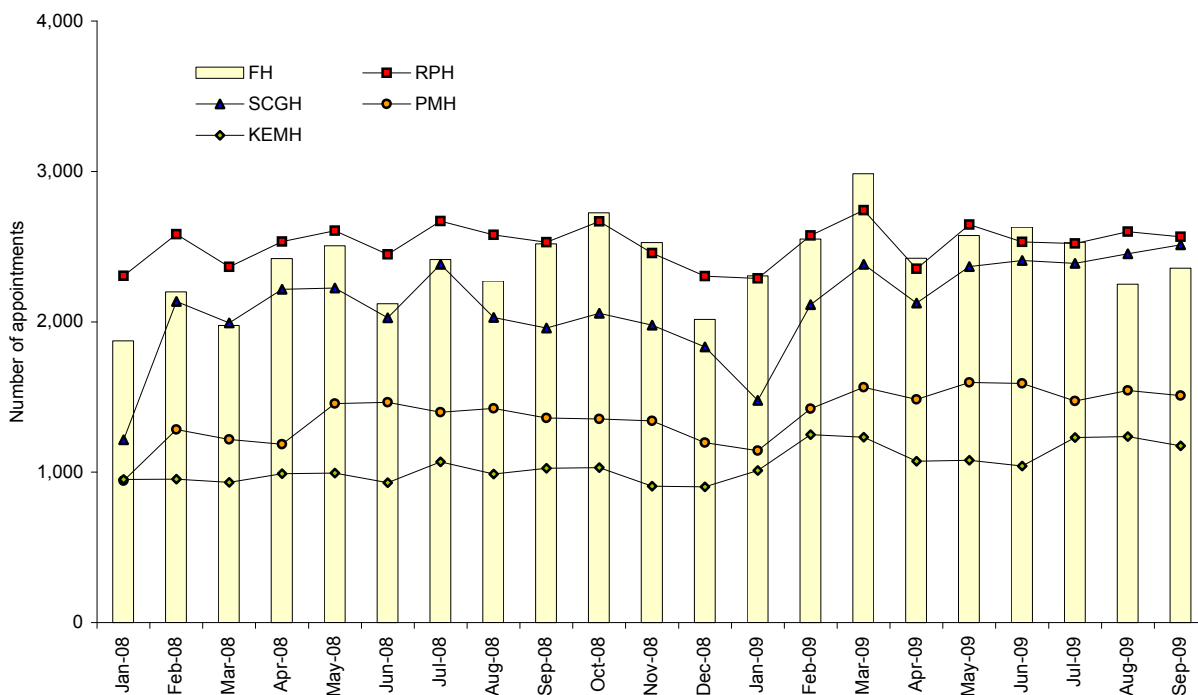


Figure 6: Proportion (%) of DNA outpatient appointments for selected metropolitan teaching hospitals, WA, January 2008 - September 2009

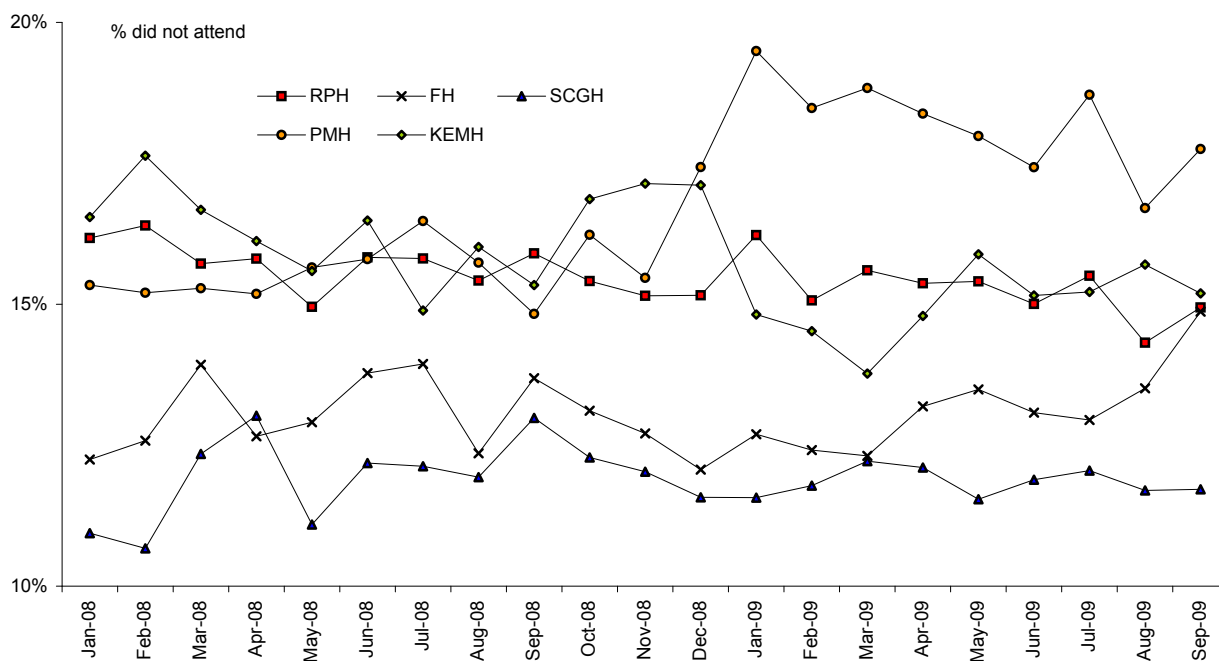


Figure 7: Proportion (%) of new appointments for selected metropolitan teaching hospitals, WA, January 2008 - September 2009

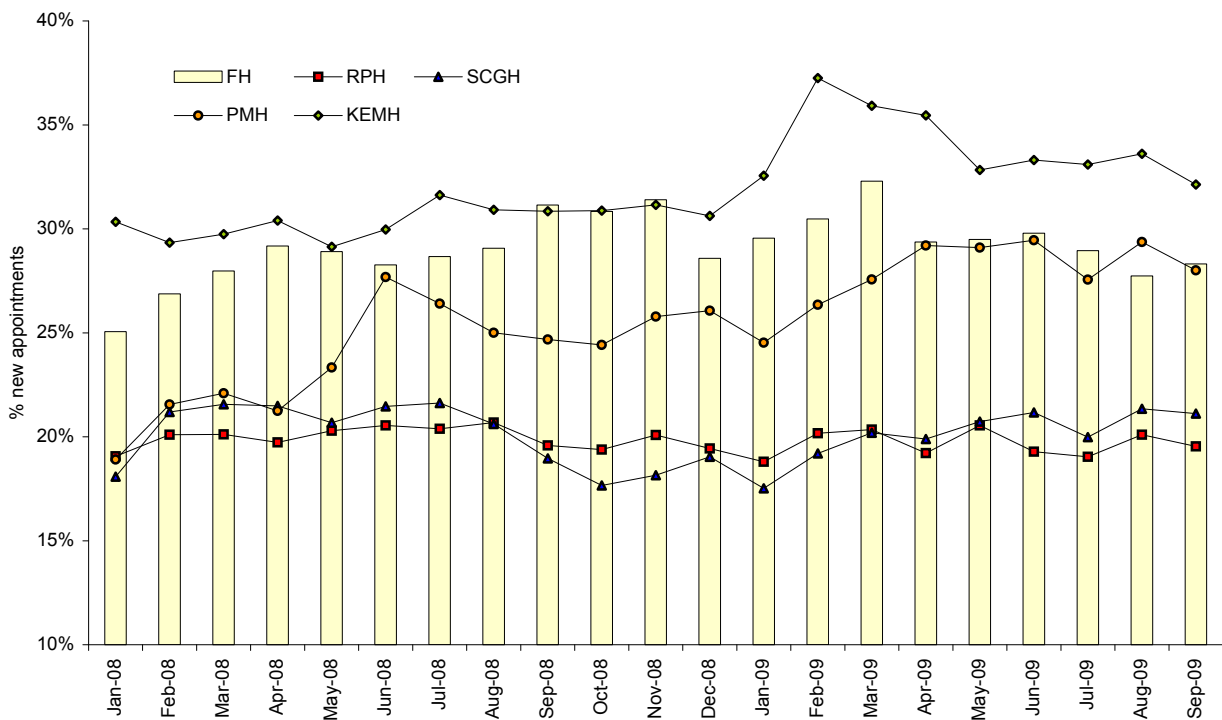
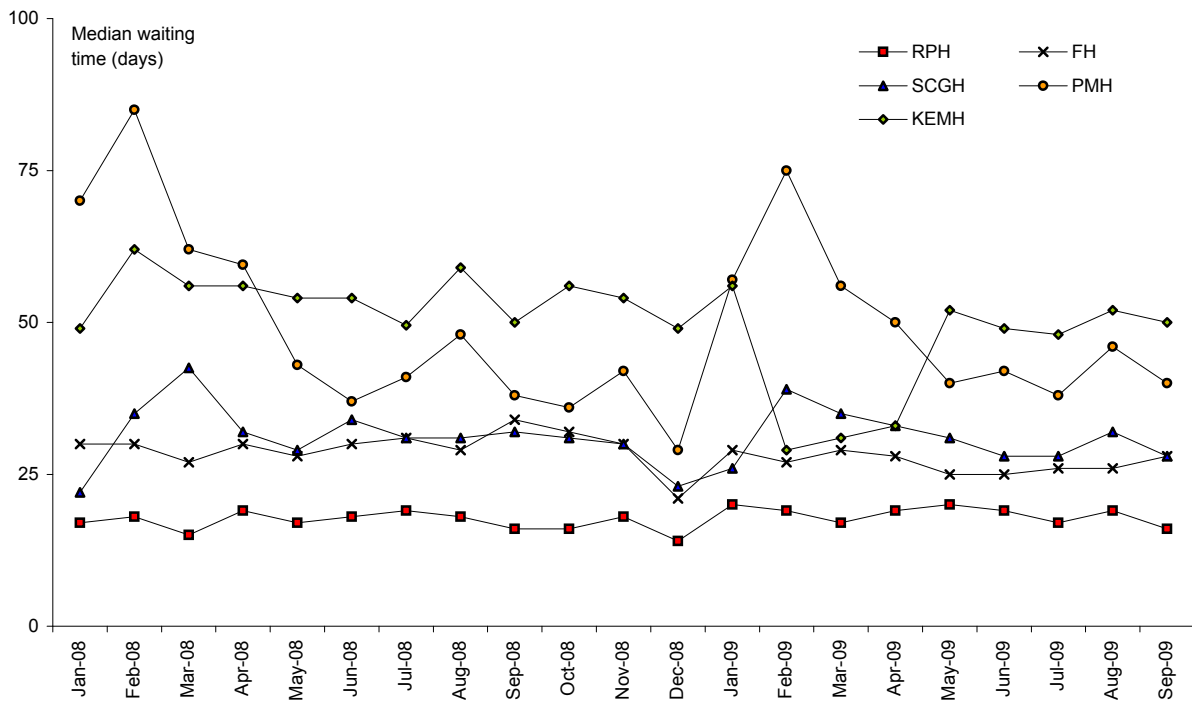


Figure 8: Median waiting time (days) of first time outpatient appointments for selected metropolitan teaching hospitals, WA, January 2008 - September 2009



Appendix Tables

Table A-1: All (new & follow up) outpatient appointments at metropolitan teaching hospitals, WA, January 2007 - September 2009

| | Adult teaching hospitals | | | | | Princess Margaret Hospital | King Edward Memorial Hospital | Total |
|-------------|-----------------------------|----------------------|--------------------|-------------------------------|-----------|----------------------------|-------------------------------|--------|
| | RPH Rehabilitation Hospital | Royal Perth Hospital | Fremantle Hospital | Sir Charles Gairdner Hospital | Sub total | | | |
| 2007 | | | | | | | | |
| January | 1,663 | 12,424 | 6,665 | 8,999 | 29,751 | 5,493 | 3,459 | 38,703 |
| February | 1,834 | 13,022 | 7,289 | 11,179 | 33,324 | 5,684 | 3,360 | 42,368 |
| March | 1,954 | 13,150 | 7,330 | 11,392 | 33,826 | 6,158 | 3,458 | 43,442 |
| April | 1,727 | 12,041 | 6,710 | 10,079 | 30,557 | 5,392 | 3,001 | 38,950 |
| May | 2,094 | 14,210 | 8,319 | 12,644 | 37,267 | 6,854 | 3,869 | 47,990 |
| June | 1,801 | 12,247 | 7,277 | 10,108 | 31,433 | 6,117 | 3,210 | 40,760 |
| July | 1,806 | 13,263 | 7,612 | 11,311 | 33,992 | 6,012 | 3,301 | 43,305 |
| August | 2,069 | 14,389 | 8,413 | 12,251 | 37,122 | 6,491 | 3,590 | 47,203 |
| September | 1,738 | 12,654 | 7,149 | 10,477 | 32,018 | 5,536 | 3,159 | 40,713 |
| October | 2,015 | 14,004 | 8,112 | 11,457 | 35,588 | 5,890 | 3,660 | 45,138 |
| November | 1,986 | 13,885 | 8,124 | 12,022 | 36,017 | 6,201 | 3,413 | 45,631 |
| December | 1,353 | 11,069 | 6,594 | 8,767 | 27,783 | 4,705 | 3,018 | 35,506 |
| 2008 | | | | | | | | |
| January | 1,740 | 13,006 | 8,018 | 8,394 | 31,158 | 5,188 | 3,359 | 39,705 |
| February | 1,924 | 14,007 | 8,804 | 11,915 | 36,650 | 6,202 | 3,405 | 46,257 |
| March | 1,730 | 12,845 | 7,818 | 10,848 | 33,241 | 5,775 | 3,348 | 42,364 |
| April | 1,837 | 14,060 | 8,936 | 12,007 | 36,840 | 5,859 | 3,533 | 46,232 |
| May | 1,969 | 14,081 | 9,338 | 12,632 | 38,020 | 6,639 | 3,638 | 48,297 |
| June | 1,740 | 13,068 | 8,285 | 11,252 | 34,345 | 6,198 | 3,303 | 43,846 |
| July | 1,775 | 14,419 | 9,248 | 13,108 | 38,550 | 6,484 | 3,573 | 48,607 |
| August | 1,679 | 13,669 | 8,703 | 11,858 | 35,909 | 6,671 | 3,429 | 46,009 |
| September | 1,654 | 14,179 | 9,074 | 11,287 | 36,194 | 6,519 | 3,543 | 46,256 |
| October | 1,912 | 15,209 | 9,906 | 12,796 | 39,823 | 6,606 | 3,608 | 50,037 |
| November | 1,863 | 13,661 | 9,115 | 11,862 | 36,501 | 6,241 | 3,171 | 45,913 |
| December | 1,329 | 13,008 | 7,869 | 10,756 | 32,962 | 5,470 | 3,187 | 41,619 |
| 2009 | | | | | | | | |
| January | 1,566 | 13,516 | 8,658 | 9,262 | 33,002 | 5,456 | 3,357 | 41,815 |
| February | 1,853 | 14,231 | 9,292 | 11,941 | 37,317 | 6,356 | 3,608 | 47,281 |
| March | 1,887 | 14,882 | 10,272 | 12,781 | 39,822 | 6,795 | 3,820 | 50,437 |
| April | 1,545 | 13,806 | 9,354 | 11,649 | 36,354 | 6,270 | 3,387 | 46,011 |
| May | 1,926 | 14,436 | 9,671 | 12,400 | 38,433 | 6,595 | 3,542 | 48,570 |
| June | 1,855 | 14,795 | 9,878 | 12,377 | 38,905 | 6,831 | 3,443 | 49,179 |
| July | 1,811 | 14,644 | 9,763 | 12,962 | 39,180 | 6,710 | 3,989 | 49,879 |
| August | 1,761 | 14,637 | 9,175 | 12,629 | 38,202 | 6,476 | 3,999 | 48,677 |
| September | 1,674 | 14,839 | 9,314 | 12,877 | 38,704 | 6,699 | 3,974 | 49,377 |
| October | | | | | | | | |
| November | | | | | | | | |
| December | | | | | | | | |

WA Outpatient Monthly Report, September 2009

Table A-2: New outpatient appointments at metropolitan teaching hospitals, WA, January 2007 - September 2009

| | Adult teaching hospitals | | | | | Princess Margaret Hospital | King Edward Memorial Hospital | Total |
|-------------|-----------------------------|----------------------|--------------------|-------------------------------|-----------|----------------------------|-------------------------------|--------|
| | RPH Rehabilitation Hospital | Royal Perth Hospital | Fremantle Hospital | Sir Charles Gairdner Hospital | Sub total | | | |
| 2007 | | | | | | | | |
| January | 466 | 2,312 | 1,525 | 1,483 | 5,786 | 813 | 1,075 | 7,674 |
| February | 516 | 2,592 | 1,804 | 2,137 | 7,049 | 950 | 1,026 | 9,025 |
| March | 556 | 2,507 | 1,674 | 2,188 | 6,925 | 962 | 968 | 8,855 |
| April | 479 | 2,337 | 1,519 | 1,748 | 6,083 | 798 | 927 | 7,808 |
| May | 637 | 2,734 | 1,987 | 2,214 | 7,572 | 1,112 | 1,131 | 9,815 |
| June | 493 | 2,453 | 1,732 | 1,835 | 6,513 | 988 | 948 | 8,449 |
| July | 522 | 2,538 | 1,794 | 2,004 | 6,858 | 976 | 992 | 8,826 |
| August | 632 | 2,845 | 1,883 | 2,227 | 7,587 | 1,095 | 1,117 | 9,799 |
| September | 509 | 2,408 | 1,604 | 2,185 | 6,706 | 945 | 941 | 8,592 |
| October | 602 | 2,650 | 1,789 | 2,361 | 7,402 | 1,138 | 1,142 | 9,682 |
| November | 573 | 2,725 | 1,726 | 2,495 | 7,519 | 1,300 | 1,042 | 9,861 |
| December | 372 | 2,087 | 1,370 | 1,860 | 5,689 | 872 | 954 | 7,515 |
| 2008 | | | | | | | | |
| January | 513 | 2,479 | 2,009 | 1,518 | 6,519 | 981 | 1,019 | 8,519 |
| February | 541 | 2,815 | 2,366 | 2,525 | 8,247 | 1,337 | 999 | 10,583 |
| March | 522 | 2,584 | 2,187 | 2,339 | 7,632 | 1,276 | 996 | 9,904 |
| April | 595 | 2,774 | 2,607 | 2,580 | 8,556 | 1,245 | 1,074 | 10,875 |
| May | 617 | 2,857 | 2,699 | 2,612 | 8,785 | 1,549 | 1,060 | 11,394 |
| June | 537 | 2,685 | 2,342 | 2,415 | 7,979 | 1,716 | 990 | 10,685 |
| July | 517 | 2,939 | 2,651 | 2,835 | 8,942 | 1,712 | 1,130 | 11,784 |
| August | 497 | 2,827 | 2,530 | 2,445 | 8,299 | 1,668 | 1,060 | 11,027 |
| September | 530 | 2,777 | 2,826 | 2,140 | 8,273 | 1,609 | 1,093 | 10,975 |
| October | 603 | 2,948 | 3,055 | 2,260 | 8,866 | 1,613 | 1,114 | 11,593 |
| November | 581 | 2,744 | 2,862 | 2,153 | 8,340 | 1,609 | 988 | 10,937 |
| December | 336 | 2,528 | 2,249 | 2,048 | 7,161 | 1,426 | 976 | 9,563 |
| 2009 | | | | | | | | |
| January | 472 | 2,541 | 2,559 | 1,623 | 7,195 | 1,338 | 1,093 | 9,626 |
| February | 505 | 2,870 | 2,832 | 2,293 | 8,500 | 1,675 | 1,344 | 11,519 |
| March | 564 | 3,028 | 3,317 | 2,581 | 9,490 | 1,873 | 1,372 | 12,735 |
| April | 482 | 2,653 | 2,747 | 2,317 | 8,199 | 1,831 | 1,201 | 11,231 |
| May | 622 | 2,966 | 2,852 | 2,571 | 9,011 | 1,919 | 1,163 | 12,093 |
| June | 612 | 2,853 | 2,943 | 2,620 | 9,028 | 2,012 | 1,147 | 12,187 |
| July | 590 | 2,788 | 2,827 | 2,590 | 8,795 | 1,849 | 1,320 | 11,964 |
| August | 584 | 2,942 | 2,545 | 2,696 | 8,767 | 1,902 | 1,344 | 12,013 |
| September | 534 | 2,899 | 2,637 | 2,719 | 8,789 | 1,876 | 1,277 | 11,942 |
| October | | | | | | | | |
| November | | | | | | | | |
| December | | | | | | | | |

WA Outpatient Monthly Report, September 2009

Table A-3: Follow up outpatient appointments at metropolitan teaching hospitals, WA, January 2007 - September 2009

| | Adult teaching hospitals | | | | | Princess Margaret Hospital | King Edward Memorial Hospital | Total |
|-------------|-----------------------------|----------------------|--------------------|-------------------------------|-----------|----------------------------|-------------------------------|--------|
| | RPH Rehabilitation Hospital | Royal Perth Hospital | Fremantle Hospital | Sir Charles Gairdner Hospital | Sub total | | | |
| 2007 | | | | | | | | |
| January | 1,197 | 10,112 | 5,140 | 7,516 | 23,965 | 4,680 | 2,384 | 31,029 |
| February | 1,318 | 10,430 | 5,485 | 9,042 | 26,275 | 4,734 | 2,334 | 33,343 |
| March | 1,398 | 10,643 | 5,656 | 9,204 | 26,901 | 5,196 | 2,490 | 34,587 |
| April | 1,248 | 9,704 | 5,191 | 8,331 | 24,474 | 4,594 | 2,074 | 31,142 |
| May | 1,457 | 11,476 | 6,332 | 10,430 | 29,695 | 5,742 | 2,738 | 38,175 |
| June | 1,308 | 9,794 | 5,545 | 8,273 | 24,920 | 5,129 | 2,262 | 32,311 |
| July | 1,284 | 10,725 | 5,818 | 9,307 | 27,134 | 5,036 | 2,309 | 34,479 |
| August | 1,437 | 11,544 | 6,530 | 10,024 | 29,535 | 5,396 | 2,473 | 37,404 |
| September | 1,229 | 10,246 | 5,545 | 8,292 | 25,312 | 4,591 | 2,218 | 32,121 |
| October | 1,413 | 11,354 | 6,323 | 9,096 | 28,186 | 4,752 | 2,518 | 35,456 |
| November | 1,413 | 11,160 | 6,398 | 9,527 | 28,498 | 4,901 | 2,371 | 35,770 |
| December | 981 | 8,982 | 5,224 | 6,907 | 22,094 | 3,833 | 2,064 | 27,991 |
| 2008 | | | | | | | | |
| January | 1,227 | 10,527 | 6,009 | 6,876 | 24,639 | 4,207 | 2,340 | 31,186 |
| February | 1,383 | 11,192 | 6,438 | 9,390 | 28,403 | 4,865 | 2,406 | 35,674 |
| March | 1,208 | 10,261 | 5,631 | 8,509 | 25,609 | 4,499 | 2,352 | 32,460 |
| April | 1,242 | 11,286 | 6,329 | 9,427 | 28,284 | 4,614 | 2,459 | 35,357 |
| May | 1,352 | 11,224 | 6,639 | 10,020 | 29,235 | 5,090 | 2,578 | 36,903 |
| June | 1,203 | 10,383 | 5,943 | 8,837 | 26,366 | 4,482 | 2,313 | 33,161 |
| July | 1,258 | 11,480 | 6,597 | 10,273 | 29,608 | 4,772 | 2,443 | 36,823 |
| August | 1,182 | 10,842 | 6,173 | 9,413 | 27,610 | 5,003 | 2,369 | 34,982 |
| September | 1,124 | 11,402 | 6,248 | 9,147 | 27,921 | 4,910 | 2,450 | 35,281 |
| October | 1,309 | 12,261 | 6,851 | 10,536 | 30,957 | 4,993 | 2,494 | 38,444 |
| November | 1,282 | 10,917 | 6,253 | 9,709 | 28,161 | 4,632 | 2,183 | 34,976 |
| December | 993 | 10,480 | 5,620 | 8,708 | 25,801 | 4,044 | 2,211 | 32,056 |
| 2009 | | | | | | | | |
| January | 1,094 | 10,975 | 6,099 | 7,639 | 25,807 | 4,118 | 2,264 | 32,189 |
| February | 1,348 | 11,361 | 6,460 | 9,648 | 28,817 | 4,681 | 2,264 | 35,762 |
| March | 1,323 | 11,854 | 6,955 | 10,200 | 30,332 | 4,922 | 2,448 | 37,702 |
| April | 1,063 | 11,153 | 6,607 | 9,332 | 28,155 | 4,439 | 2,186 | 34,780 |
| May | 1,304 | 11,470 | 6,819 | 9,829 | 29,422 | 4,676 | 2,379 | 36,477 |
| June | 1,243 | 11,942 | 6,935 | 9,757 | 29,877 | 4,819 | 2,296 | 36,992 |
| July | 1,221 | 11,856 | 6,936 | 10,372 | 30,385 | 4,861 | 2,669 | 37,915 |
| August | 1,177 | 11,695 | 6,630 | 9,933 | 29,435 | 4,574 | 2,655 | 36,664 |
| September | 1,140 | 11,940 | 6,677 | 10,158 | 29,915 | 4,823 | 2,697 | 37,435 |
| October | | | | | | | | |
| November | | | | | | | | |
| December | | | | | | | | |

WA Outpatient Monthly Report, September 2009

Table A-4: First outpatient appointments at metropolitan teaching hospitals, WA, January 2007 - September 2009

| | Adult teaching hospitals | | | | | Princess Margaret Hospital | King Edward Memorial Hospital | Total |
|-------------|-----------------------------|----------------------|--------------------|-------------------------------|-----------|----------------------------|-------------------------------|--------|
| | RPH Rehabilitation Hospital | Royal Perth Hospital | Fremantle Hospital | Sir Charles Gairdner Hospital | Sub total | | | |
| 2007 | | | | | | | | |
| January | 418 | 2,116 | 1,435 | 1,380 | 5,349 | 772 | 1,014 | 7,135 |
| February | 472 | 2,377 | 1,674 | 1,992 | 6,515 | 913 | 976 | 8,404 |
| March | 502 | 2,251 | 1,560 | 2,025 | 6,338 | 918 | 902 | 8,158 |
| April | 426 | 2,111 | 1,437 | 1,631 | 5,605 | 774 | 876 | 7,255 |
| May | 552 | 2,458 | 1,833 | 2,054 | 6,897 | 1,058 | 1,062 | 9,017 |
| June | 431 | 2,175 | 1,613 | 1,677 | 5,896 | 929 | 877 | 7,702 |
| July | 515 | 2,477 | 1,757 | 1,959 | 6,708 | 971 | 977 | 8,656 |
| August | 608 | 2,706 | 1,799 | 2,122 | 7,235 | 1,077 | 1,052 | 9,364 |
| September | 484 | 2,289 | 1,483 | 1,987 | 6,243 | 915 | 892 | 8,050 |
| October | 553 | 2,493 | 1,667 | 2,058 | 6,771 | 1,105 | 1,088 | 8,964 |
| November | 533 | 2,523 | 1,612 | 2,135 | 6,803 | 1,259 | 994 | 9,056 |
| December | 338 | 1,936 | 1,271 | 1,546 | 5,091 | 825 | 903 | 6,819 |
| 2008 | | | | | | | | |
| January | 457 | 2,305 | 1,874 | 1,216 | 5,852 | 942 | 951 | 7,745 |
| February | 483 | 2,582 | 2,200 | 2,135 | 7,400 | 1,283 | 954 | 9,637 |
| March | 459 | 2,366 | 1,976 | 1,992 | 6,793 | 1,218 | 933 | 8,944 |
| April | 516 | 2,533 | 2,421 | 2,216 | 7,686 | 1,186 | 989 | 9,861 |
| May | 552 | 2,606 | 2,506 | 2,225 | 7,889 | 1,456 | 994 | 10,339 |
| June | 488 | 2,448 | 2,121 | 2,027 | 7,084 | 1,465 | 931 | 9,480 |
| July | 466 | 2,669 | 2,415 | 2,382 | 7,932 | 1,398 | 1,068 | 10,398 |
| August | 436 | 2,579 | 2,271 | 2,029 | 7,315 | 1,425 | 988 | 9,728 |
| September | 469 | 2,529 | 2,519 | 1,959 | 7,476 | 1,361 | 1,027 | 9,864 |
| October | 505 | 2,668 | 2,724 | 2,057 | 7,954 | 1,353 | 1,030 | 10,337 |
| November | 506 | 2,457 | 2,527 | 1,978 | 7,468 | 1,342 | 906 | 9,716 |
| December | 289 | 2,304 | 2,015 | 1,832 | 6,440 | 1,197 | 903 | 8,540 |
| 2009 | | | | | | | | |
| January | 372 | 2,289 | 2,305 | 1,477 | 6,443 | 1,144 | 1,012 | 8,599 |
| February | 418 | 2,574 | 2,550 | 2,114 | 7,656 | 1,423 | 1,250 | 10,329 |
| March | 471 | 2,741 | 2,984 | 2,383 | 8,579 | 1,565 | 1,232 | 11,376 |
| April | 386 | 2,352 | 2,423 | 2,125 | 7,286 | 1,483 | 1,072 | 9,841 |
| May | 518 | 2,647 | 2,574 | 2,367 | 8,106 | 1,596 | 1,080 | 10,782 |
| June | 509 | 2,531 | 2,628 | 2,407 | 8,075 | 1,591 | 1,042 | 10,708 |
| July | 474 | 2,520 | 2,530 | 2,388 | 7,912 | 1,474 | 1,230 | 10,616 |
| August | 479 | 2,600 | 2,250 | 2,452 | 7,781 | 1,543 | 1,236 | 10,560 |
| September | 442 | 2,566 | 2,357 | 2,513 | 7,878 | 1,509 | 1,176 | 10,563 |
| October | | | | | | | | |
| November | | | | | | | | |
| December | | | | | | | | |

WA Outpatient Monthly Report, September 2009

Table A-5: Did not attend outpatient appointments at metropolitan teaching hospitals, WA, January 2007 - September 2009

| | Adult teaching hospitals | | | | | Princess Margaret Hospital | King Edward Memorial Hospital | Total |
|-------------|-----------------------------|----------------------|--------------------|-------------------------------|-----------|----------------------------|-------------------------------|-------|
| | RPH Rehabilitation Hospital | Royal Perth Hospital | Fremantle Hospital | Sir Charles Gairdner Hospital | Sub total | | | |
| 2007 | | | | | | | | |
| January | 188 | 2,513 | 1,074 | 1,226 | 5,001 | 985 | 694 | 6,680 |
| February | 211 | 2,761 | 1,199 | 1,604 | 5,775 | 1,058 | 738 | 7,571 |
| March | 309 | 2,650 | 1,169 | 1,679 | 5,807 | 1,017 | 833 | 7,657 |
| April | 208 | 2,494 | 1,024 | 1,437 | 5,163 | 855 | 689 | 6,707 |
| May | 316 | 2,822 | 1,320 | 1,843 | 6,301 | 949 | 787 | 8,037 |
| June | 276 | 2,640 | 1,189 | 1,489 | 5,594 | 914 | 636 | 7,144 |
| July | 223 | 2,693 | 1,268 | 1,551 | 5,735 | 894 | 698 | 7,327 |
| August | 276 | 2,892 | 1,219 | 1,574 | 5,961 | 1,037 | 791 | 7,789 |
| September | 231 | 2,548 | 1,240 | 1,409 | 5,428 | 863 | 657 | 6,948 |
| October | 302 | 2,708 | 1,254 | 1,601 | 5,865 | 1,020 | 705 | 7,590 |
| November | 300 | 2,673 | 1,314 | 1,700 | 5,987 | 1,119 | 736 | 7,842 |
| December | 166 | 2,083 | 937 | 1,192 | 4,378 | 925 | 655 | 5,958 |
| 2008 | | | | | | | | |
| January | 213 | 2,510 | 1,119 | 1,031 | 4,873 | 940 | 666 | 6,479 |
| February | 212 | 2,747 | 1,267 | 1,423 | 5,649 | 1,112 | 729 | 7,490 |
| March | 190 | 2,396 | 1,265 | 1,528 | 5,379 | 1,042 | 670 | 7,091 |
| April | 192 | 2,640 | 1,295 | 1,798 | 5,925 | 1,049 | 679 | 7,653 |
| May | 246 | 2,476 | 1,384 | 1,576 | 5,682 | 1,232 | 672 | 7,586 |
| June | 219 | 2,458 | 1,324 | 1,561 | 5,562 | 1,163 | 652 | 7,377 |
| July | 224 | 2,708 | 1,498 | 1,809 | 6,239 | 1,279 | 625 | 8,143 |
| August | 244 | 2,492 | 1,227 | 1,607 | 5,570 | 1,246 | 654 | 7,470 |
| September | 204 | 2,681 | 1,439 | 1,684 | 6,008 | 1,135 | 642 | 7,785 |
| October | 274 | 2,771 | 1,495 | 1,792 | 6,332 | 1,280 | 732 | 8,344 |
| November | 268 | 2,439 | 1,327 | 1,622 | 5,656 | 1,142 | 656 | 7,454 |
| December | 175 | 2,324 | 1,080 | 1,408 | 4,987 | 1,155 | 658 | 6,800 |
| 2009 | | | | | | | | |
| January | 225 | 2,618 | 1,259 | 1,212 | 5,314 | 1,321 | 584 | 7,219 |
| February | 236 | 2,525 | 1,317 | 1,595 | 5,673 | 1,441 | 613 | 7,727 |
| March | 258 | 2,751 | 1,442 | 1,779 | 6,230 | 1,577 | 610 | 8,417 |
| April | 231 | 2,508 | 1,421 | 1,604 | 5,764 | 1,412 | 588 | 7,764 |
| May | 228 | 2,629 | 1,508 | 1,618 | 5,983 | 1,446 | 669 | 8,098 |
| June | 255 | 2,612 | 1,486 | 1,670 | 6,023 | 1,442 | 615 | 8,080 |
| July | 215 | 2,687 | 1,452 | 1,776 | 6,130 | 1,545 | 716 | 8,391 |
| August | 252 | 2,446 | 1,433 | 1,673 | 5,804 | 1,299 | 745 | 7,848 |
| September | 257 | 2,607 | 1,627 | 1,709 | 6,200 | 1,446 | 712 | 8,358 |
| October | | | | | | | | |
| November | | | | | | | | |
| December | | | | | | | | |

WA Outpatient Monthly Report, September 2009

Table A-6: Proportion (%) of all appointments that were new outpatient appointments at metropolitan teaching hospitals, WA, January 2007 - September 2009

| | Adult teaching hospitals | | | | | Princess Margaret Hospital | King Edward Memorial Hospital | Total |
|-------------|-----------------------------|----------------------|--------------------|-------------------------------|-----------|----------------------------|-------------------------------|-------|
| | RPH Rehabilitation Hospital | Royal Perth Hospital | Fremantle Hospital | Sir Charles Gairdner Hospital | Sub total | | | |
| 2007 | | | | | | | | |
| January | 28.0% | 18.6% | 22.9% | 16.5% | 19.4% | 14.8% | 31.1% | 19.8% |
| February | 28.1% | 19.9% | 24.7% | 19.1% | 21.2% | 16.7% | 30.5% | 21.3% |
| March | 28.5% | 19.1% | 22.8% | 19.2% | 20.5% | 15.6% | 28.0% | 20.4% |
| April | 27.7% | 19.4% | 22.6% | 17.3% | 19.9% | 14.8% | 30.9% | 20.0% |
| May | 30.4% | 19.2% | 23.9% | 17.5% | 20.3% | 16.2% | 29.2% | 20.5% |
| June | 27.4% | 20.0% | 23.8% | 18.2% | 20.7% | 16.2% | 29.5% | 20.7% |
| July | 28.9% | 19.1% | 23.6% | 17.7% | 20.2% | 16.2% | 30.1% | 20.4% |
| August | 30.5% | 19.8% | 22.4% | 18.2% | 20.4% | 16.9% | 31.1% | 20.8% |
| September | 29.3% | 19.0% | 22.4% | 20.9% | 20.9% | 17.1% | 29.8% | 21.1% |
| October | 29.9% | 18.9% | 22.1% | 20.6% | 20.8% | 19.3% | 31.2% | 21.4% |
| November | 28.9% | 19.6% | 21.2% | 20.8% | 20.9% | 21.0% | 30.5% | 21.6% |
| December | 27.5% | 18.9% | 20.8% | 21.2% | 20.5% | 18.5% | 31.6% | 21.2% |
| 2008 | | | | | | | | |
| January | 29.5% | 19.1% | 25.1% | 18.1% | 20.9% | 18.9% | 30.3% | 21.5% |
| February | 28.1% | 20.1% | 26.9% | 21.2% | 22.5% | 21.6% | 29.3% | 22.9% |
| March | 30.2% | 20.1% | 28.0% | 21.6% | 23.0% | 22.1% | 29.7% | 23.4% |
| April | 32.4% | 19.7% | 29.2% | 21.5% | 23.2% | 21.2% | 30.4% | 23.5% |
| May | 31.3% | 20.3% | 28.9% | 20.7% | 23.1% | 23.3% | 29.1% | 23.6% |
| June | 30.9% | 20.5% | 28.3% | 21.5% | 23.2% | 27.7% | 30.0% | 24.4% |
| July | 29.1% | 20.4% | 28.7% | 21.6% | 23.2% | 26.4% | 31.6% | 24.2% |
| August | 29.6% | 20.7% | 29.1% | 20.6% | 23.1% | 25.0% | 30.9% | 24.0% |
| September | 32.0% | 19.6% | 31.1% | 19.0% | 22.9% | 24.7% | 30.8% | 23.7% |
| October | 31.5% | 19.4% | 30.8% | 17.7% | 22.3% | 24.4% | 30.9% | 23.2% |
| November | 31.2% | 20.1% | 31.4% | 18.2% | 22.8% | 25.8% | 31.2% | 23.8% |
| December | 25.3% | 19.4% | 28.6% | 19.0% | 21.7% | 26.1% | 30.6% | 23.0% |
| 2009 | | | | | | | | |
| January | 30.1% | 18.8% | 29.6% | 17.5% | 21.8% | 24.5% | 32.6% | 23.0% |
| February | 27.3% | 20.2% | 30.5% | 19.2% | 22.8% | 26.4% | 37.3% | 24.4% |
| March | 29.9% | 20.3% | 32.3% | 20.2% | 23.8% | 27.6% | 35.9% | 25.2% |
| April | 31.2% | 19.2% | 29.4% | 19.9% | 22.6% | 29.2% | 35.5% | 24.4% |
| May | 32.3% | 20.5% | 29.5% | 20.7% | 23.4% | 29.1% | 32.8% | 24.9% |
| June | 33.0% | 19.3% | 29.8% | 21.2% | 23.2% | 29.5% | 33.3% | 24.8% |
| July | 32.6% | 19.0% | 29.0% | 20.0% | 22.4% | 27.6% | 33.1% | 24.0% |
| August | 33.2% | 20.1% | 27.7% | 21.3% | 22.9% | 29.4% | 33.6% | 24.7% |
| September | 31.9% | 19.5% | 28.3% | 21.1% | 22.7% | 28.0% | 32.1% | 24.2% |
| October | | | | | | | | |
| November | | | | | | | | |
| December | | | | | | | | |

WA Outpatient Monthly Report, September 2009

Table A-7: Proportion (%) of total appointments that were DNA outpatient appointments at metropolitan teaching hospitals, WA, January 2007 - September 2009

| | Adult teaching hospitals | | | | | Princess Margaret Hospital | King Edward Memorial Hospital | Total |
|-------------|-----------------------------|----------------------|--------------------|-------------------------------|-----------|----------------------------|-------------------------------|-------|
| | RPH Rehabilitation Hospital | Royal Perth Hospital | Fremantle Hospital | Sir Charles Gairdner Hospital | Sub total | | | |
| 2007 | | | | | | | | |
| January | 10.2% | 16.8% | 13.9% | 12.0% | 14.4% | 15.2% | 16.7% | 14.7% |
| February | 10.3% | 17.5% | 14.1% | 12.5% | 14.8% | 15.7% | 18.0% | 15.2% |
| March | 13.7% | 16.8% | 13.8% | 12.8% | 14.7% | 14.2% | 19.4% | 15.0% |
| April | 10.7% | 17.2% | 13.2% | 12.5% | 14.5% | 13.7% | 18.7% | 14.7% |
| May | 13.1% | 16.6% | 13.7% | 12.7% | 14.5% | 12.2% | 16.9% | 14.3% |
| June | 13.3% | 17.7% | 14.0% | 12.8% | 15.1% | 13.0% | 16.5% | 14.9% |
| July | 11.0% | 16.9% | 14.3% | 12.1% | 14.4% | 12.9% | 17.5% | 14.5% |
| August | 11.8% | 16.7% | 12.7% | 11.4% | 13.8% | 13.8% | 18.1% | 14.2% |
| September | 11.7% | 16.8% | 14.8% | 11.9% | 14.5% | 13.5% | 17.2% | 14.6% |
| October | 13.0% | 16.2% | 13.4% | 12.3% | 14.1% | 14.8% | 16.2% | 14.4% |
| November | 13.1% | 16.1% | 13.9% | 12.4% | 14.3% | 15.3% | 17.7% | 14.7% |
| December | 10.9% | 15.8% | 12.4% | 12.0% | 13.6% | 16.4% | 17.8% | 14.4% |
| 2008 | | | | | | | | |
| January | 10.9% | 16.2% | 12.2% | 10.9% | 13.5% | 15.3% | 16.5% | 14.0% |
| February | 9.9% | 16.4% | 12.6% | 10.7% | 13.4% | 15.2% | 17.6% | 13.9% |
| March | 9.9% | 15.7% | 13.9% | 12.3% | 13.9% | 15.3% | 16.7% | 14.3% |
| April | 9.5% | 15.8% | 12.7% | 13.0% | 13.9% | 15.2% | 16.1% | 14.2% |
| May | 11.1% | 15.0% | 12.9% | 11.1% | 13.0% | 15.7% | 15.6% | 13.6% |
| June | 11.2% | 15.8% | 13.8% | 12.2% | 13.9% | 15.8% | 16.5% | 14.4% |
| July | 11.2% | 15.8% | 13.9% | 12.1% | 13.9% | 16.5% | 14.9% | 14.3% |
| August | 12.7% | 15.4% | 12.4% | 11.9% | 13.4% | 15.7% | 16.0% | 14.0% |
| September | 11.0% | 15.9% | 13.7% | 13.0% | 14.2% | 14.8% | 15.3% | 14.4% |
| October | 12.5% | 15.4% | 13.1% | 12.3% | 13.7% | 16.2% | 16.9% | 14.3% |
| November | 12.6% | 15.1% | 12.7% | 12.0% | 13.4% | 15.5% | 17.1% | 14.0% |
| December | 11.6% | 15.2% | 12.1% | 11.6% | 13.1% | 17.4% | 17.1% | 14.0% |
| 2009 | | | | | | | | |
| January | 12.6% | 16.2% | 12.7% | 11.6% | 13.9% | 19.5% | 14.8% | 14.7% |
| February | 11.3% | 15.1% | 12.4% | 11.8% | 13.2% | 18.5% | 14.5% | 14.0% |
| March | 12.0% | 15.6% | 12.3% | 12.2% | 13.5% | 18.8% | 13.8% | 14.3% |
| April | 13.0% | 15.4% | 13.2% | 12.1% | 13.7% | 18.4% | 14.8% | 14.4% |
| May | 10.6% | 15.4% | 13.5% | 11.5% | 13.5% | 18.0% | 15.9% | 14.3% |
| June | 12.1% | 15.0% | 13.1% | 11.9% | 13.4% | 17.4% | 15.2% | 14.1% |
| July | 10.6% | 15.5% | 12.9% | 12.1% | 13.5% | 18.7% | 15.2% | 14.4% |
| August | 12.5% | 14.3% | 13.5% | 11.7% | 13.2% | 16.7% | 15.7% | 13.9% |
| September | 13.3% | 14.9% | 14.9% | 11.7% | 13.8% | 17.8% | 15.2% | 14.5% |
| October | | | | | | | | |
| November | | | | | | | | |
| December | | | | | | | | |

WA Outpatient Monthly Report, September 2009

Table A-8: Median waiting time (days) of first time outpatient appointments at metropolitan teaching hospitals, WA, January 2007 - September 2009

| | Adult teaching hospitals | | | | | Princess Margaret Hospital | King Edward Memorial Hospital | Total |
|-------------|-----------------------------|----------------------|--------------------|-------------------------------|-----------|----------------------------|-------------------------------|-------|
| | RPH Rehabilitation Hospital | Royal Perth Hospital | Fremantle Hospital | Sir Charles Gairdner Hospital | Sub total | | | |
| 2007 | | | | | | | | |
| January | 43 | 21 | 28 | 29 | 67 | 76 | 63 | 27 |
| February | 34 | 17 | 31 | 27 | 66 | 77 | 58 | 25 |
| March | 40 | 16 | 30 | 29 | 62 | 80 | 48 | 25 |
| April | 27 | 16 | 30 | 28 | 54 | 67 | 45 | 25 |
| May | 24 | 19 | 28 | 25 | 59 | 70 | 47 | 23 |
| June | 28 | 20 | 34 | 26 | 59 | 79 | 47 | 26 |
| July | 28 | 19 | 33 | 25 | 62 | 80 | 55 | 24 |
| August | 22 | 20 | 40 | 30 | 65 | 84 | 49 | 28 |
| September | 23 | 17 | 38 | 30 | 64 | 75 | 56 | 26 |
| October | 24 | 16 | 35 | 30 | 56 | 63 | 51 | 27 |
| November | 29 | 14 | 37 | 29 | 56 | 59 | 51 | 25 |
| December | 28 | 13 | 25 | 20 | 52 | 60 | 47 | 20 |
| 2008 | | | | | | | | |
| January | 42 | 17 | 30 | 22 | 57 | 70 | 49 | 24 |
| February | 35 | 18 | 30 | 35 | 71 | 85 | 62 | 27 |
| March | 37 | 15 | 27 | 43 | 59 | 62 | 56 | 27 |
| April | 34 | 19 | 30 | 32 | 57 | 60 | 56 | 27 |
| May | 34 | 17 | 28 | 29 | 49 | 43 | 54 | 25 |
| June | 33 | 18 | 30 | 34 | 47 | 37 | 54 | 27 |
| July | 26 | 19 | 31 | 31 | 46 | 41 | 50 | 27 |
| August | 28 | 18 | 29 | 31 | 52 | 48 | 59 | 26 |
| September | 33 | 16 | 34 | 32 | 44 | 38 | 50 | 27 |
| October | 37 | 16 | 32 | 31 | 45 | 36 | 56 | 27 |
| November | 38 | 18 | 30 | 30 | 48 | 42 | 54 | 26 |
| December | 32 | 14 | 21 | 23 | 40 | 29 | 49 | 19 |
| 2009 | | | | | | | | |
| January | 32 | 20 | 29 | 26 | 57 | 57 | 56 | 26 |
| February | 36 | 19 | 27 | 39 | 49 | 75 | 29 | 27 |
| March | 31 | 17 | 29 | 35 | 46 | 56 | 31 | 27 |
| April | 36 | 19 | 28 | 33 | 43 | 50 | 33 | 27 |
| May | 37 | 20 | 25 | 31 | 45 | 40 | 52 | 26 |
| June | 32 | 19 | 25 | 28 | 44 | 42 | 49 | 24 |
| July | 38 | 17 | 26 | 28 | 43 | 38 | 48 | 24 |
| August | 38 | 19 | 26 | 32 | 49 | 46 | 52 | 26 |
| September | 38 | 16 | 28 | 28 | 43 | 40 | 50 | 25 |
| October | | | | | | | | |
| November | | | | | | | | |
| December | | | | | | | | |

WA Outpatient Monthly Report, September 2009

Table A-9: Mean waiting time (days) of first time outpatient appointments at metropolitan teaching hospitals, WA, January 2007 - September 2009

| | Adult teaching hospitals | | | | | Princess Margaret Hospital | King Edward Memorial Hospital | Total |
|-------------|-----------------------------|----------------------|--------------------|-------------------------------|-----------|----------------------------|-------------------------------|-------|
| | RPH Rehabilitation Hospital | Royal Perth Hospital | Fremantle Hospital | Sir Charles Gairdner Hospital | Sub total | | | |
| 2007 | | | | | | | | |
| January | 108 | 94 | 96 | 89 | 116 | 155 | 86 | 94 |
| February | 110 | 73 | 111 | 95 | 108 | 141 | 78 | 92 |
| March | 162 | 73 | 97 | 114 | 114 | 154 | 72 | 99 |
| April | 147 | 71 | 92 | 102 | 109 | 148 | 75 | 91 |
| May | 116 | 83 | 94 | 97 | 110 | 148 | 73 | 93 |
| June | 85 | 81 | 120 | 99 | 105 | 139 | 69 | 97 |
| July | 102 | 81 | 114 | 105 | 106 | 138 | 74 | 98 |
| August | 101 | 74 | 124 | 115 | 101 | 128 | 73 | 100 |
| September | 79 | 79 | 140 | 126 | 97 | 118 | 76 | 108 |
| October | 110 | 66 | 143 | 144 | 96 | 112 | 79 | 112 |
| November | 108 | 63 | 136 | 131 | 106 | 126 | 81 | 105 |
| December | 109 | 70 | 88 | 95 | 92 | 121 | 66 | 85 |
| 2008 | | | | | | | | |
| January | 111 | 66 | 93 | 110 | 105 | 138 | 73 | 88 |
| February | 98 | 70 | 112 | 119 | 111 | 134 | 81 | 99 |
| March | 130 | 67 | 104 | 155 | 102 | 117 | 81 | 108 |
| April | 90 | 60 | 113 | 111 | 109 | 132 | 82 | 94 |
| May | 86 | 86 | 106 | 125 | 90 | 95 | 83 | 103 |
| June | 115 | 79 | 108 | 131 | 96 | 101 | 86 | 105 |
| July | 80 | 64 | 114 | 129 | 92 | 103 | 78 | 100 |
| August | 81 | 63 | 104 | 123 | 95 | 104 | 83 | 94 |
| September | 96 | 67 | 102 | 126 | 103 | 121 | 80 | 96 |
| October | 124 | 59 | 88 | 121 | 92 | 99 | 82 | 89 |
| November | 106 | 67 | 88 | 114 | 92 | 98 | 83 | 89 |
| December | 124 | 51 | 80 | 91 | 87 | 90 | 82 | 75 |
| 2009 | | | | | | | | |
| January | 96 | 68 | 85 | 83 | 91 | 99 | 83 | 80 |
| February | 107 | 70 | 102 | 98 | 90 | 106 | 73 | 90 |
| March | 116 | 63 | 82 | 111 | 91 | 108 | 71 | 86 |
| April | 101 | 65 | 79 | 138 | 97 | 117 | 70 | 93 |
| May | 106 | 71 | 75 | 127 | 101 | 110 | 88 | 91 |
| June | 94 | 66 | 66 | 121 | 107 | 120 | 86 | 84 |
| July | 110 | 68 | 71 | 97 | 97 | 110 | 82 | 80 |
| August | 140 | 65 | 77 | 119 | 93 | 102 | 81 | 90 |
| September | 144 | 61 | 66 | 111 | 90 | 98 | 80 | 83 |
| October | | | | | | | | |
| November | | | | | | | | |
| December | | | | | | | | |

WA Outpatient Monthly Report, September 2009

Table A-10: 90th percentile waiting time (days) of first time outpatient appointments at metropolitan teaching hospitals, WA, January 2007 - September 2009

| | Adult teaching hospitals | | | | | Princess Margaret Hospital | King Edward Memorial Hospital | Total |
|-------------|-----------------------------|----------------------|--------------------|-------------------------------|-----------|----------------------------|-------------------------------|-------|
| | RPH Rehabilitation Hospital | Royal Perth Hospital | Fremantle Hospital | Sir Charles Gairdner Hospital | Sub total | | | |
| 2007 | | | | | | | | |
| January | 257 | 154 | 236 | 168 | 196 | 216 | 185 | 187 |
| February | 307 | 140 | 275 | 196 | 192 | 229 | 181 | 193 |
| March | 353 | 129 | 229 | 308 | 192 | 218 | 161 | 211 |
| April | 315 | 137 | 203 | 188 | 204 | 229 | 175 | 170 |
| May | 232 | 153 | 203 | 177 | 208 | 243 | 160 | 179 |
| June | 218 | 144 | 313 | 219 | 201 | 233 | 159 | 203 |
| July | 331 | 161 | 268 | 205 | 200 | 222 | 162 | 215 |
| August | 233 | 171 | 287 | 246 | 198 | 235 | 169 | 217 |
| September | 189 | 160 | 340 | 301 | 178 | 189 | 162 | 231 |
| October | 239 | 126 | 450 | 379 | 188 | 211 | 176 | 267 |
| November | 318 | 132 | 391 | 266 | 190 | 208 | 172 | 218 |
| December | 222 | 128 | 199 | 177 | 166 | 195 | 137 | 163 |
| 2008 | | | | | | | | |
| January | 190 | 131 | 204 | 184 | 187 | 225 | 157 | 171 |
| February | 259 | 147 | 268 | 257 | 198 | 220 | 180 | 215 |
| March | 373 | 146 | 250 | 348 | 194 | 206 | 173 | 233 |
| April | 269 | 140 | 293 | 264 | 203 | 221 | 184 | 217 |
| May | 217 | 155 | 266 | 272 | 189 | 187 | 193 | 222 |
| June | 238 | 161 | 236 | 292 | 207 | 214 | 188 | 218 |
| July | 197 | 141 | 261 | 301 | 176 | 210 | 157 | 222 |
| August | 197 | 133 | 290 | 301 | 196 | 204 | 175 | 210 |
| September | 196 | 145 | 216 | 235 | 198 | 217 | 178 | 189 |
| October | 202 | 139 | 181 | 232 | 195 | 217 | 184 | 173 |
| November | 196 | 145 | 178 | 196 | 192 | 207 | 189 | 174 |
| December | 258 | 120 | 168 | 167 | 187 | 181 | 189 | 152 |
| 2009 | | | | | | | | |
| January | 180 | 152 | 179 | 132 | 192 | 190 | 192 | 157 |
| February | 220 | 166 | 192 | 180 | 199 | 218 | 189 | 180 |
| March | 186 | 147 | 164 | 216 | 208 | 246 | 191 | 171 |
| April | 146 | 144 | 147 | 253 | 204 | 224 | 186 | 164 |
| May | 198 | 160 | 165 | 350 | 207 | 220 | 200 | 183 |
| June | 215 | 142 | 135 | 234 | 216 | 224 | 202 | 161 |
| July | 172 | 137 | 151 | 213 | 211 | 237 | 190 | 156 |
| August | 234 | 146 | 140 | 288 | 196 | 211 | 185 | 174 |
| September | 481 | 133 | 140 | 216 | 190 | 215 | 183 | 163 |
| October | | | | | | | | |
| November | | | | | | | | |
| December | | | | | | | | |

WA Outpatient Monthly Report, September 2009

Table A-11: Total (DNA, new & follow up) outpatient appointments at metropolitan teaching hospitals, WA, January 2007 - September 2009

| | Adult teaching hospitals | | | | | Princess Margaret Hospital | King Edward Memorial Hospital | Total |
|-------------|-----------------------------|----------------------|--------------------|-------------------------------|-----------|----------------------------|-------------------------------|--------|
| | RPH Rehabilitation Hospital | Royal Perth Hospital | Fremantle Hospital | Sir Charles Gairdner Hospital | Sub total | | | |
| 2007 | | | | | | | | |
| January | 1,851 | 14,937 | 7,739 | 10,225 | 34,752 | 6,478 | 4,153 | 45,383 |
| February | 2,045 | 15,783 | 8,488 | 12,783 | 39,099 | 6,742 | 4,098 | 49,939 |
| March | 2,263 | 15,800 | 8,499 | 13,071 | 39,633 | 7,175 | 4,291 | 51,099 |
| April | 1,935 | 14,535 | 7,734 | 11,516 | 35,720 | 6,247 | 3,690 | 45,657 |
| May | 2,410 | 17,032 | 9,639 | 14,487 | 43,568 | 7,803 | 4,656 | 56,027 |
| June | 2,077 | 14,887 | 8,466 | 11,597 | 37,027 | 7,031 | 3,846 | 47,904 |
| July | 2,029 | 15,956 | 8,880 | 12,862 | 39,727 | 6,906 | 3,999 | 50,632 |
| August | 2,345 | 17,281 | 9,632 | 13,825 | 43,083 | 7,528 | 4,381 | 54,992 |
| September | 1,969 | 15,202 | 8,389 | 11,886 | 37,446 | 6,399 | 3,816 | 47,661 |
| October | 2,317 | 16,712 | 9,366 | 13,058 | 41,453 | 6,910 | 4,365 | 52,728 |
| November | 2,286 | 16,558 | 9,438 | 13,722 | 42,004 | 7,320 | 4,149 | 53,473 |
| December | 1,519 | 13,152 | 7,531 | 9,959 | 32,161 | 5,630 | 3,673 | 41,464 |
| 2008 | | | | | | | | |
| January | 1,953 | 15,516 | 9,137 | 9,425 | 36,031 | 6,128 | 4,025 | 46,184 |
| February | 2,136 | 16,754 | 10,071 | 13,338 | 42,299 | 7,314 | 4,134 | 53,747 |
| March | 1,920 | 15,241 | 9,083 | 12,376 | 38,620 | 6,817 | 4,018 | 49,455 |
| April | 2,029 | 16,700 | 10,231 | 13,805 | 42,765 | 6,908 | 4,212 | 53,885 |
| May | 2,215 | 16,557 | 10,722 | 14,208 | 43,702 | 7,871 | 4,310 | 55,883 |
| June | 1,959 | 15,526 | 9,609 | 12,813 | 39,907 | 7,361 | 3,955 | 51,223 |
| July | 1,999 | 17,127 | 10,746 | 14,917 | 44,789 | 7,763 | 4,198 | 56,750 |
| August | 1,923 | 16,161 | 9,930 | 13,465 | 41,479 | 7,917 | 4,083 | 53,479 |
| September | 1,858 | 16,860 | 10,513 | 12,971 | 42,202 | 7,654 | 4,185 | 54,041 |
| October | 2,186 | 17,980 | 11,401 | 14,588 | 46,155 | 7,886 | 4,340 | 58,381 |
| November | 2,131 | 16,100 | 10,442 | 13,484 | 42,157 | 7,383 | 3,827 | 53,367 |
| December | 1,504 | 15,332 | 8,949 | 12,164 | 37,949 | 6,625 | 3,845 | 48,419 |
| 2009 | | | | | | | | |
| January | 1,791 | 16,134 | 9,917 | 10,474 | 38,316 | 6,777 | 3,941 | 49,034 |
| February | 2,089 | 16,756 | 10,609 | 13,536 | 42,990 | 7,797 | 4,221 | 55,008 |
| March | 2,145 | 17,633 | 11,714 | 14,560 | 46,052 | 8,372 | 4,430 | 58,854 |
| April | 1,776 | 16,314 | 10,775 | 13,253 | 42,118 | 7,682 | 3,975 | 53,775 |
| May | 2,154 | 17,065 | 11,179 | 14,018 | 44,416 | 8,041 | 4,211 | 56,668 |
| June | 2,110 | 17,407 | 11,364 | 14,047 | 44,928 | 8,273 | 4,058 | 57,259 |
| July | 2,026 | 17,331 | 11,215 | 14,738 | 45,310 | 8,255 | 4,705 | 58,270 |
| August | 2,013 | 17,083 | 10,608 | 14,302 | 44,006 | 7,775 | 4,744 | 56,525 |
| September | 1,931 | 17,446 | 10,941 | 14,586 | 44,904 | 8,145 | 4,686 | 57,735 |
| October | | | | | | | | |
| November | | | | | | | | |
| December | | | | | | | | |

Notes

Data extraction date

All data in this report is based on appointments to the end of the last day in each month or quarter extracted from the TOPAS data system, a subset of all outpatient appointments.

Data revision

Minor variations for totals published in previous reports are likely to occur as the outpatient databases are continuously updated. Variations may occur for a number of reasons, such as updates to procedure codes, lags in data processing or other types of errors detected after publication.

Therefore, the most recent edition of a report should always be consulted, as data is not revised in previously published editions.

Data exclusion

Counts are based on comparable specialties for both teaching and non teaching hospitals. This means, for example, that some types of appointments, such as physiotherapy are not counted.

Metropolitan public hospitals

The term 'metropolitan public hospital' refers to the public hospitals which are located in the North Metropolitan and South Metropolitan Area Health Services.

Booked appointments

Due to inconsistencies in the data system that reports and tracks booked appointments for outpatient services, separate data is provided with respect to both first and new appointments.

First appointment

A first appointment refers to an appointment where a patient has never before attended a clinic of that specialty at that hospital.

New appointment

New appointments can have multiple entries, as the appointment recording system allocates a maximum of 45 minutes per appointment. If a further extended appointment is required, this attendance is also recorded as a 'new' appointment until a follow up session is required.

Follow up appointment

A follow up appointment refers to a subsequent appointment and is typically shorter than a new appointment, eg 15 to 20 mins in duration.

Waiting time

Calculation of waiting time is based on first appointments, in preference to new appointments, as the latter include multiple counts of attendance at an outpatient clinic.

Specialty

The list of outpatient specialties refers to clinically related provision of services as defined by each hospital.

Definition of appointment

Attendance at an outpatient appointment is based on counts of medical and surgical appointments, as defined in field SB19 in the Outpatient Database.

Teaching hospital

Encompasses the five adult metropolitan teaching hospitals (ie Royal Perth Hospital, Royal Perth Hospital Shenton Park Campus, Sir Charles Gairdner Hospital, Fremantle Hospital and King Edward Memorial Hospital) and the metropolitan children's hospital (ie Princess Margaret Hospital).