



Western Australian Elective Surgery Wait List Report September 2009

© Department of Health, Western Australia

This work is copyright. Apart from any use as permitted under the *Copyright Act 1968*, no part may be reproduced without prior written permission from the Department of Health, Western Australia.

Requests and enquiries concerning reproduction and rights should be directed to -

Performance Reporting Branch
Information Management & Reporting Directorate
Department of Health, Western Australia
PO Box 8172 Perth Business Centre
Western Australia 6849

A list of the Department's publications concerning elective surgery is available from -

www.health.wa.gov.au/ElectiveSurgery/waitinglist/

ISSN 1836-1617 (online)

ISSN 1836-1609 (print)

Suggested citation

Department of Health, Western Australia.

September 2009 Western Australian Elective Surgery Wait List Report.

Perth: Performance Reporting Branch, Information Management & Reporting Directorate
Department of Health, 2009.

Report produced by

Performance Reporting Branch, Information Management & Reporting Directorate,
Health Information Division, Department of Health

Copies of this publication available at:

www.health.wa.gov.au/ElectiveSurgery/waitinglist/

Table of Contents

Key points	i
Abbreviations	ii
Glossary	ii
Symbols	ii
List of Tables	iii
List of Figures	iv
1. On Wait List	
1.1 Number of cases	1
1.2 Waiting times	2
1.3 Long term trends	3
1.4 Specialty	3
2. Admissions	
2.1 Number of cases	3
2.2 Waiting times	3
2.3 Long term trends	3
3. Time on Wait List	
3.1 Category 1 cases	5
3.2 Category 2 cases	5
3.3 Category 3 cases	5
4. ASI	5
5. Combined ESWL	5
Appendices	A-1
Notes	A-25

Key Points

Admissions

There was a total of 6,477 admissions from all Western Australian public hospital wait lists in September 2009. Of these 6,477 admissions, 5,775 (89.2%) were within boundary.

Out of the 6,477 admissions, 5,076 (78.4%) were from metropolitan wait lists and 1,401 (21.6%) were from WACHS wait lists.

The median wait time for all admissions was 28 days, with median wait times of 28 and 24 days for admissions to metropolitan and WACHS hospitals, respectively.

On elective surgery wait list

At the end of the month, there was a total of 14,446 cases on all public hospital wait lists. Of these 14,446 cases, 12,641 (87.5%) were within boundary.

Out of the 14,446 cases, 11,394 (78.9%) were on metropolitan wait lists and 3,052 (21.1%) were on WACHS wait lists.

The median wait time for all cases on all wait lists was 59 days, with a median wait times of 58 and 63 days for wait lists at metropolitan and WACHS hospitals, respectively.

Abbreviations

AHS	Area Health Service
AIHW	Australian Institute of Health and Welfare
CAHS	Child and Adolescent Health Service
DNA	Did not attend
FH	Fremantle Hospital
JHC	Joondalup Health Campus
KEMH	King Edward Memorial Hospital
NA	Not available
NMAHS	North Metropolitan Area Health Service Includes: <i>Kalamunda Hospital, King Edward Memorial Hospital, Osborne Park Hospital, Sir Charles Gairdner Hospital and Swan District Hospital.</i>
PEARLS	Patient Electronic Analysis Referral Liaison System
PHC	Peel Health Campus
PMH	Princess Margaret Hospital for Children
qtr	Quarter
RPH	Royal Perth Hospital
RPH SPC	Royal Perth Hospital Shenton Park Campus (also known as RPH Rehabilitation Hospital)
SCGH	Sir Charles Gairdner Hospital
SMAHS	South Metropolitan Area Health Service Includes: <i>Armadale-Kelmscott Hospital, Bentley Hospital, Fremantle Hospital, Kaleeya Hospital, Rockingham General Hospital, Royal Perth Hospital and Royal Perth Rehabilitation Hospital.</i>
TOPAS	The Open Patient Administration System
WA	Western Australia
WACHS	Western Australian Country Health Service

Glossary

Mean: This refers to the arithmetic mean, being the sum of all values in the list divided by the number of items in the list. The mean is the most commonly-used type of average and can also be referred to simply as the average.

Median: This refers to the value separating the higher half of a sample, a population, or a probability distribution, from the lower half. This statistic is used, in preference to the mean, when the distribution of the values is skewed by a small number of very high values.

90th percentile: This refers to the value in the list below which there are 90 percent of numbers and enables waiting times to be expressed as a percentile rank.

However, as percentile ranks are not on equal interval scales, the difference between any two scores is not the same as between any other two scores. For instance, the difference (25) between 90 and 65 is not the same as the difference (25) between 50 and 25 because of the position rank of a percentile is based on an assumed normal distribution of all values.

Symbols

- nil

List of Tables

Table 1:	Cases on public hospital wait lists & waiting times at 30 September 2008, 31 August 2009 & 30 September 2009	1
Table 2:	Admissions from public hospital wait lists for September 2008, August 2009 & September 2009	3
Table 3:	ASI cases undertaken by public hospital & region, September 2009	9
Table 4:	Annual summary of admissions from public hospital wait lists & completed ASI cases, 2006/2007, 2007/2008, 2008/2009 & 2009/2010	9
Table 5:	Monthly ASI cases undertaken at all public hospitals by region, July 2006 - September 2009	10
Table A-1:	Wait lists & admissions: all WA public hospitals, July 2006 - December 2008	A-1
Table A-2:	Wait lists & admissions: all WA public hospitals, January 2009 - September 2009	A-2
Table A-3:	Wait lists & admissions: public metropolitan hospitals, July 2006 - December 2008	A-3
Table A-4:	Wait lists & admissions: public metropolitan hospitals, January 2009 - September 2009	A-4
Table A-5:	Wait lists & admissions: public WACHS hospitals, July 2006 - December 2008	A-5
Table A-6:	Wait lists & admissions: public WACHS hospitals, January 2009 - September 2009	A-6
Table A-7:	Cases on wait lists by duration: All public hospitals, July 2006 - December 2008	A-7
Table A-8:	Cases on wait lists by duration: All public hospitals, January 2009 - September 2009	A-8
Table A-9:	Cases on wait lists by duration: Metropolitan public hospitals, July 2006 - December 2008	A-9
Table A-10:	Cases on wait lists by duration: Metropolitan public hospitals, January 2009 - September 2009	A-10
Table A-11:	Cases on wait lists by duration: WACHS public hospitals, July 2006 - December 2008	A-11
Table A-12:	Cases on wait lists by duration: WACHS public hospitals, January 2009 - September 2009	A-12
Table A-13:	Category 1 cases on public hospital wait lists by duration, July 2006 - December 2008	A-13
Table A-14:	Category 1 cases on public hospital wait lists by duration, January 2009 - September 2009	A-14
Table A-15:	Category 2 cases on public hospital wait lists by duration, July 2006 - December 2008	A-15
Table A-16:	Category 2 cases on public hospital wait lists by duration, January 2009 - September 2009	A-16
Table A-17:	Category 3 cases on public hospital wait lists by duration, July 2006 - December 2008	A-17
Table A-18:	Category 3 cases on public hospital wait lists by duration, January 2006 - September 2009	A-18

Table A-19: Admissions from wait lists by urgency category: all public hospitals, July 2006 - December 2008	A-19
Table A-20: Admissions from wait lists by urgency category: all public hospitals, January 2009 - September 2009	A-19
Table A-21: Admissions from wait lists by urgency category: metropolitan public hospitals, July 2006 - December 2008.....	A-20
Table A-22: Admissions from wait lists by urgency category: metropolitan public hospitals, January 2009 - September 2009	A-20
Table A-23: Admissions from wait lists by urgency category: WACHS public hospitals, July 2006 - December 2008	A-21
Table A-24: Admissions from wait lists by urgency category: WACHS public hospitals, January 2009 - September 2009.....	A-21
Table A-25: Wait lists & median wait time (months) on public hospital wait lists by urgency category & surgical specialty at 30 September 2009	A-22
Table A-26: Half yearly cases & median wait time on public hospital lists at month ending, July 1999 - June 2009	A-24

List of Figures

Figure 1: Cases at end of month on all public hospital wait lists, July 2007 - September 2009	1
Figure 2: Within boundary cases at end of month on all public hospital wait lists, July 2007 - September 2009	2
Figure 3: Median waiting time (months) of cases at the end of month on public hospital wait lists, July 2007 - September 2009.....	2
Figure 4: Admissions from all public hospital wait lists, July 2007 - September 2009	4
Figure 5: Median waiting time (months) of admissions from all public hospital wait lists, July 2007 - September 2009.....	4
Figure 6: Category 1 cases & proportion (%) of cases within boundary on all public hospital wait lists at end of month, July 2007 - September 2009.....	6
Figure 7: Category 1 cases over the boundary on all public hospital wait lists at end of month, July 2007 - September 2009	6
Figure 8: Category 2 cases & proportion (%) of cases within boundary on all public hospital wait lists at end of month, July 2007 - September 2009	7
Figure 9: Category 2 cases over the boundary on all public hospital wait lists at end of month, July 2007 - September 2009	7
Figure 10: Category 3 cases & proportion (%) of cases within boundary on all public hospital wait lists at end of month, July 2007 - September 2009	8
Figure 11: Category 3 cases over the boundary on all public hospital wait lists at end of month, July 2007 - September 2009	8

1. On Wait List

1.1 Number of cases

Table 1 provides comparative data on the number of cases on metropolitan, WACHS and all public hospital wait lists for the current reporting month, the previous month and the same month last year.

This table shows that overall at 30 September 2009, of the 14,446 cases on all wait lists, 11,394 (78.9%) were on metropolitan wait lists and 3,052 (21.1%) were on WACHS wait lists.

The total of 14,446 cases on all wait lists was an increase of 222 from the previous month (14,224) and of 429 for the same month last year (14,017). (For longer term monthly trends see Tables A-1 and A-2, pages A-1 and A-2.)

On the metropolitan wait lists, at 30 September 2009, there was a total of 11,394 cases, being an increase of 189 from the previous month (11,205) and of 288 for the same month last year (11,106). (For longer term monthly trends see Tables A-3 and A-4, pages A-3 and A-4.)

On the WACHS wait list, at 30 September 2009, there was a total of 3,052 cases, being an increase of 33 from the previous month

(3,019) and of 141 compared to the same month last year (2,911). (For longer term monthly trends see Tables A-5 and A-6, pages A-5 and A-6.)

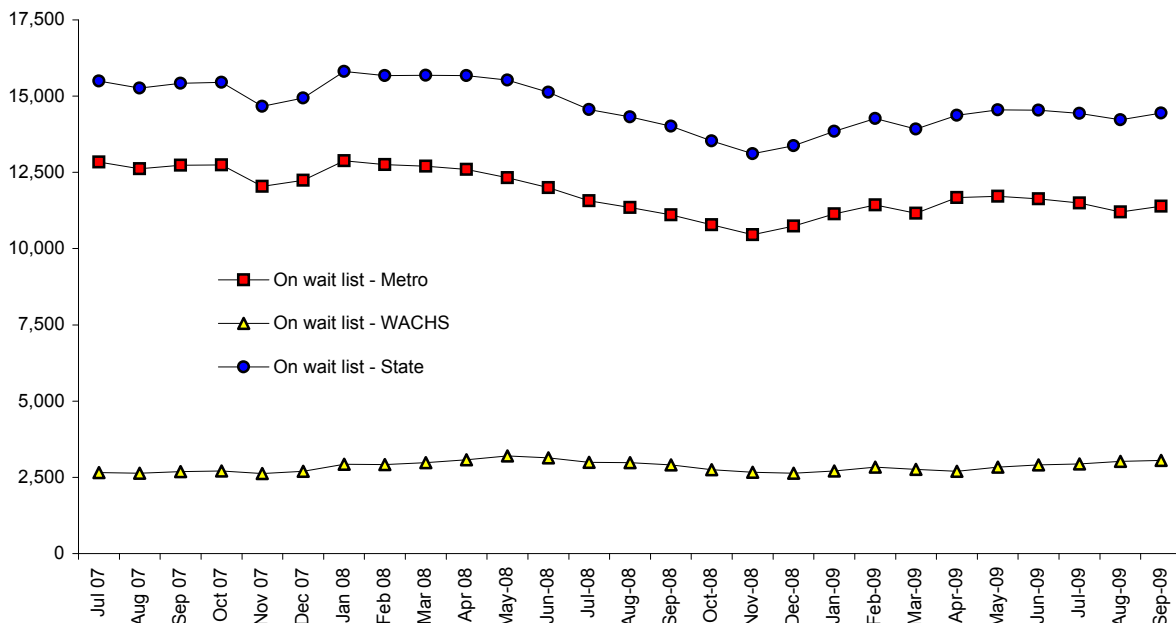
Figure 1 provides an overview of trends in the number of cases at the end of the month from July 2007 up to the present.

Figure 2 (page 2) provides data in relation to the number and proportion of cases on all public hospital wait lists that were within the boundary from July 2007 to the present.

Table 1: Cases on public hospital wait lists & waiting times at 30 September 2008, 31 August 2009 & 30 September 2009

	Cases n	Waiting time (mths)	
		Median	90th percentile
Metropolitan hospitals			
30 September 2008	11,106	2.10	8.28
31 August 2009	11,205	2.04	8.02
30 September 2009	11,394	1.91	7.79
WACHS hospitals			
30 September 2008	2,911	2.43	9.67
31 August 2009	3,019	2.04	8.94
30 September 2009	3,052	2.07	9.60
All hospitals			
30 September 2008	14,017	2.20	8.45
31 August 2009	14,224	2.04	8.38
30 September 2009	14,446	1.94	8.02

Figure 1: Cases at end of month on all public hospital wait lists, July 2007 - September 2009



1.2 Waiting times

Table 1 (page 1) compares the median wait time of cases on metropolitan, WACHS and all public hospital wait lists for the current reporting month, the previous month and the same month last year.

This table shows that the median wait time at the end of September 2009 for all wait lists was 1.94 months, with times of 1.91 months and 2.07 months for the metropolitan and WACHS public hospital wait lists, respectively

Figure 2: Within boundary cases at end of month on all public hospital wait lists, July 2007 - September 2009

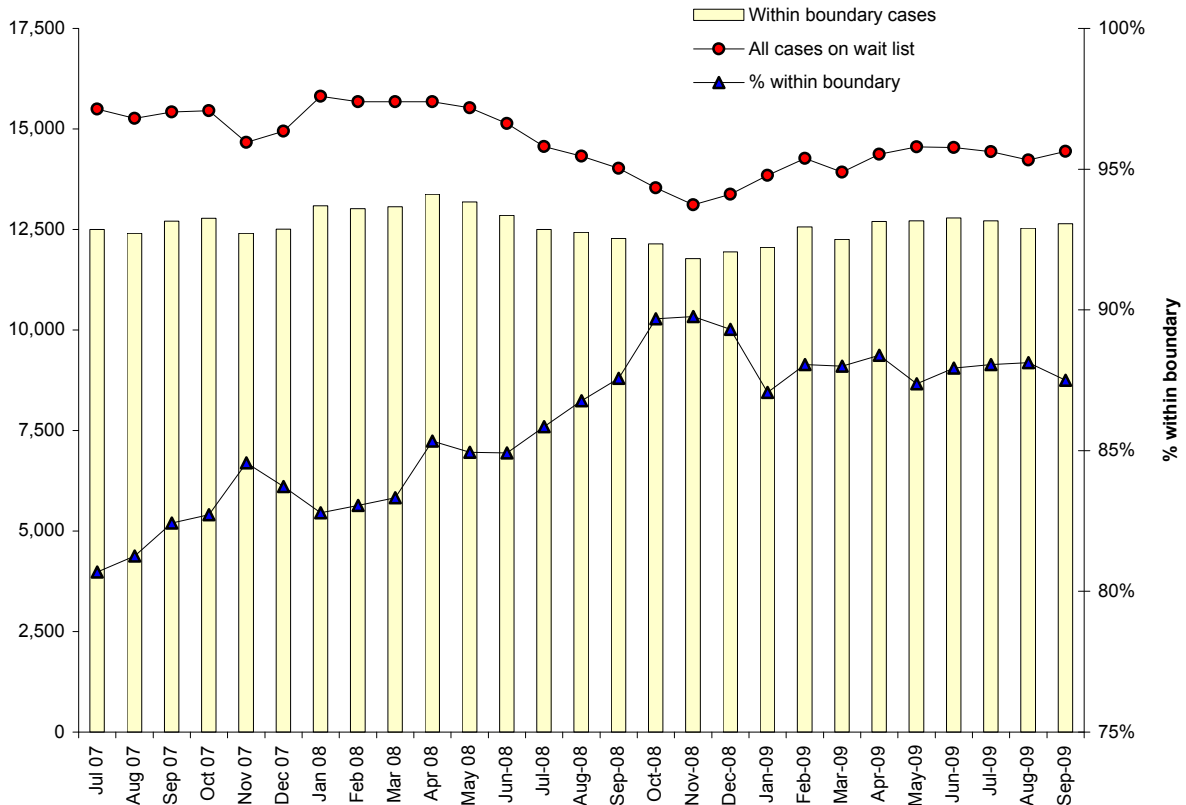


Figure 3: Median waiting time (months) of cases at the end of month on public hospital wait lists, July 2007 - September 2009

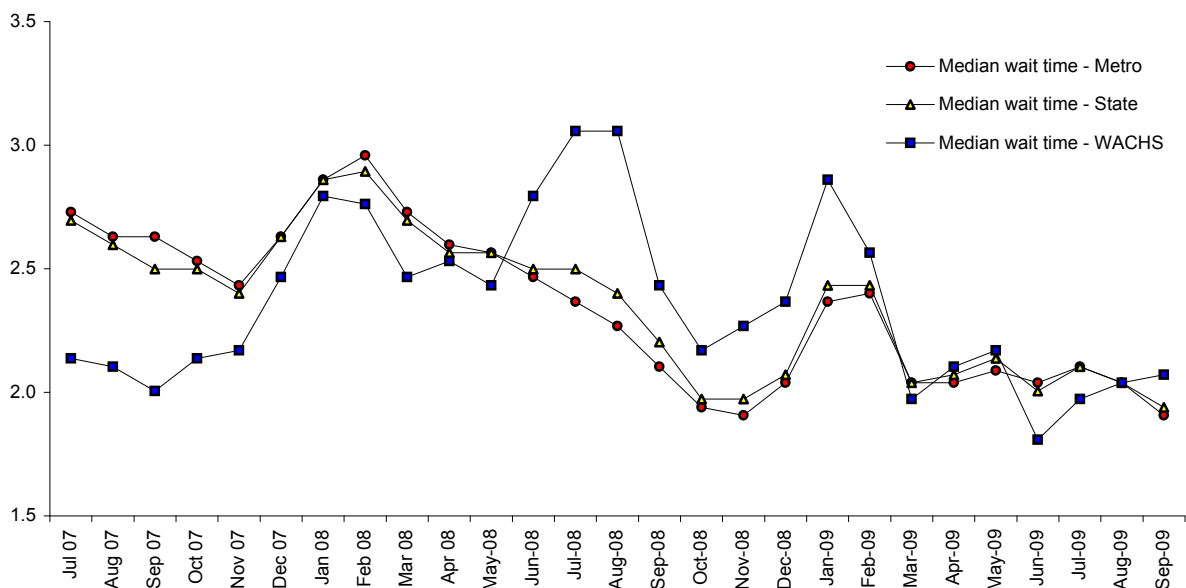


Figure 3 (page 2) provides an overview of trends in median wait times from July 2007 up to the present for metropolitan, WACHS and all public hospital wait lists.

1.3 Long term trends

See Table A-26 (page A-24) for an overview of trends of half yearly cases on wait lists and median wait times from the end of July 1999 to the end of the current reporting month.

1.4 Specialty

See Table A-25 (page A-22) for a breakdown by urgency and surgical specialty of the number of cases and waiting time for the State, metropolitan hospitals and WACHS hospitals.

2. Admissions

2.1 Number of cases

Table 2 compares the number of cases admitted from metropolitan, WACHS and all public hospital wait lists for the current reporting month to the previous month and to the same month last year.

This table shows that overall in September 2009, of the 6,477 admissions from all wait lists, 5,076 (78.4%) were from metropolitan wait lists and 1,401 (21.6%) were from WACHS wait lists.

Table 2: Admissions from public hospital wait lists for September 2008, August 2009 & September 2009

	Cases n	Waiting time (mths)	
		Median	90th percentile
Metropolitan hospitals			
September 2008	5,145	0.99	6.33
August 2009	5,531	1.12	5.29
September 2009	5,076	0.92	5.31
WACHS hospitals			
September 2008	1,286	0.66	6.18
August 2009	1,311	0.85	4.93
September 2009	1,401	0.79	3.68
All hospitals			
September 2008	6,431	0.92	6.28
August 2009	6,842	1.05	5.29
September 2009	6,477	0.92	5.03

The total of 6,477 admissions from all wait lists was 365 fewer than the previous month (6,842) and 46 more than the same month last year (6,431). (For longer term monthly trends see Tables A-1 and A-2, pages A-1 and A-2.)

The number of admissions from the metropolitan wait list in September 2009 was 5,076. This was 455 fewer than the previous month (5,531 admissions) and 69 fewer than same month last year (5,145 admissions). (For longer term monthly trends see Tables A-3 and A-4, pages A-3 and A-4.)

The number of admissions from the WACHS wait list in September 2009 was 1,401. This was 90 more than the previous month (1,311 admissions) and 115 more than same month last year (1,286 admissions). (For longer term monthly trends see Tables A-5 and A-6, pages A-5 and A-6.)

Figure 4 (page 4) provides an overview of trends in the number of monthly cases admitted for surgery from July 2007 up to the present for the metropolitan, WACHS and all public hospital wait lists.

2.2 Waiting times

Table 2 compares the median wait time for cases admitted from metropolitan, WACHS and all public hospital wait lists for the current reporting month, the previous month and the same month last year.

This table shows the median wait time for September 2009 for all admissions was 0.92 months, with median wait times of 0.92 and 0.79 months on metropolitan and WACHS public hospital wait lists, respectively.

Figure 5 (page 4) shows that the median wait time of wait list admitted cases at both WACHS and metropolitan public hospitals has been fairly stable since July 2007, except for some increases from this pattern in the December to January period, which coincides with the holiday period.

2.3 Long term trends

A breakdown of monthly admissions by urgency category from July 2006 up to the present is provided for the whole State (Tables A-19

and A-20, page A-19), for metropolitan hospitals (Tables A-21 and A-22, page A-20) and for WACHS hospitals (Tables A-23 and A-24, page A-21).

ing for more than 365 days, 309 (2.1%) had been waiting between 366 and 500 days and 51 (0.4%) had been waiting for more than 500 days (Tables A-7 and A-8, pages A-7 and A-8).

3. Time on Wait List

As at 30 September 2009 of the 14,446 cases on all wait lists, 360 (2.4%) had been wait-

This means that at the end of the current reporting month, 97.5% of all cases on all public hospital wait lists had been waiting for 365 days or less.

Figure 4: Admissions from all public hospital wait lists, July 2007 - September 2009

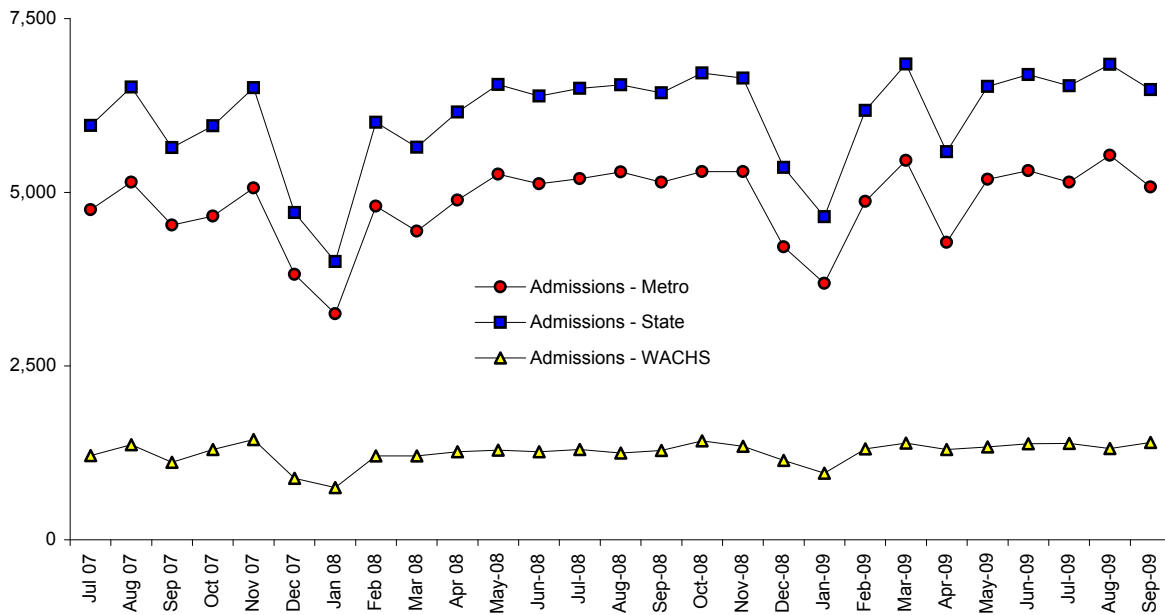
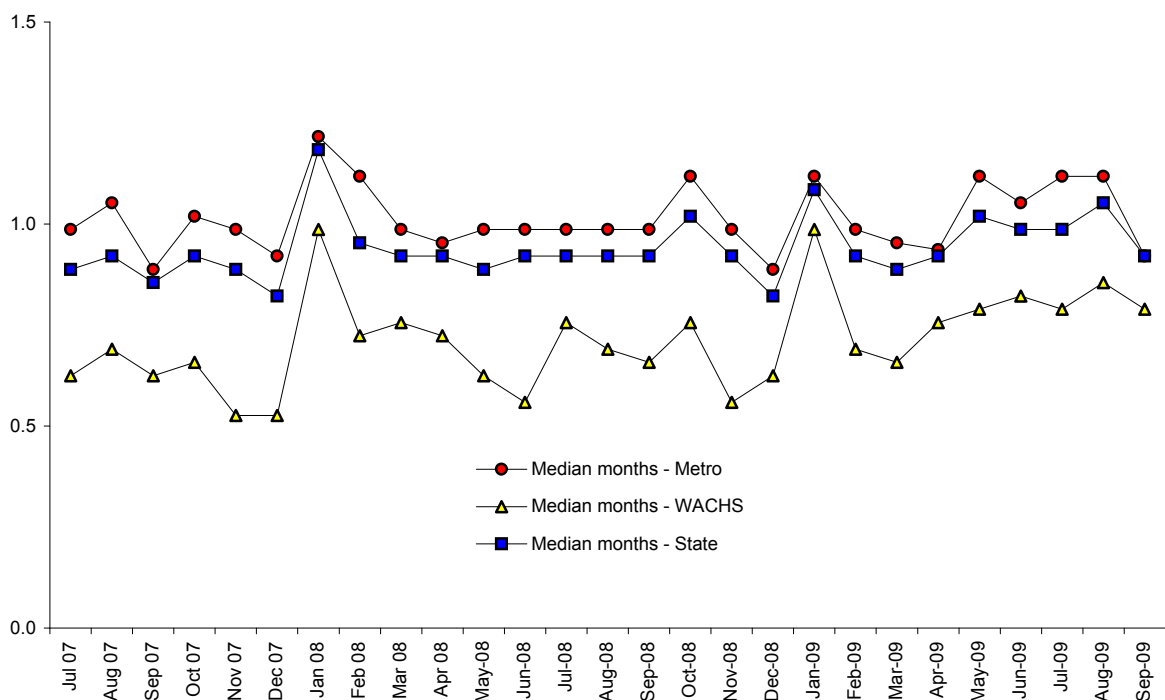


Figure 5: Median waiting time (months) of admissions from all public hospital wait lists, July 2007 - September 2009



See Tables A-9 and A-10 (pages A-9 and A-10) and Tables A-11 and A-12 (pages A-11 and A-12) for more detailed information about the frequency of duration of waiting time cases on metropolitan and WACHS wait lists, respectively.

3.1 Category 1 cases

Tables A-13 and A-14 (pages A-13 and A-14) provide a breakdown of the number and proportion of Category 1 cases waiting within boundary (ie admission desirable within 30 days) for metropolitan, WACHS and all public hospital wait lists.

Figures 6 and 7 (page 6) contain data from July 2007 on the number cases, the proportion of cases within the boundary and the number of cases over the boundary, to provide an overview of trends involving this category.

3.2 Category 2 cases

Tables A-15 and A-16 (pages A-15 and A-16) provide a breakdown of the number and proportion of Category 2 cases waiting within the boundary (ie admission desirable within 90 days) for metropolitan, WACHS and all public hospital wait lists.

Figures 8 and 9 (page 7) contain data from July 2007 on the number of cases, the proportion of cases within the boundary and the number of cases over the boundary, to provide an overview of trends involving this category.

3.3 Category 3 cases

Tables A-17 and A-18 (pages A-17 and A-18) provide a breakdown of the number and proportion of Category 3 cases waiting within boundary (ie admission desirable within 365 days) for metropolitan, WACHS and all public hospital wait lists.

Figures 10 and 11 (page 8) contain data from July 2007 on the number of cases, the proportion of cases within the boundary and the number of cases over the boundary, to provide an overview of trends involving this category.

4. ASI

Table 3 (page 9) shows that in September 2009 a total of 920 cases were undertaken at public hospitals which participated in the Ambulatory Surgery Initiative (ASI).

The majority of these cases were at metropolitan hospitals, which accounted for 849 (92.3%) of all cases, with the remaining 71 (7.7%) cases at WACHS hospitals.

See Table 5 (page 10) for a break down of data for an overview of trends in monthly ASI cases for the metropolitan area, WACHS and the whole state.

5. Combined ESWL

Table 4 (page 9) provides an overview of the outcomes from both the elective surgery and the ASI in enabling patients to receive medical services for both major and minor elective surgery in WA from the 2006/2007 financial year to the present.

In 2006/2007, there was a total of 69,347 admissions from waiting lists. With the inclusion of the 8,629 ASI cases, this meant that in 2006/2007 there was a combined total of 77,976 cases of elective surgery (including completed ASI cases) undertaken in WA.

In 2007/2008, there was a total of 70,039 admissions from waiting lists. With the inclusion of the 10,543 ASI cases, this meant that in 2007/2008 there was a combined total of 80,582 cases of elective surgery (including completed ASI cases) undertaken in WA.

In 2008/2009, there was a total of 74,671 admissions from waiting lists. With the inclusion of the 9,849 ASI cases, this meant that in 2008/2009 there was a combined total of 84,520 cases of elective surgery (including completed ASI cases) undertaken in WA.

Compared to 2006/2007, when there was a total of 77,976 combined elective surgery cases, in 2007/2008 and 2008/2009 there was an additional 2,606 and 6,544 cases, respectively.

Western Australian Elective Surgery Wait List Report, September 2009

Over the three year period from 2006/2007 (77,976 cases) to 2008/2009 (84,520 cases), there was an overall growth of 8.4% in the total number of combined elective surgery cases.

Figure 6: Category 1 cases & proportion (%) of cases within boundary on all public hospital wait lists at end of month, July 2007 - September 2009

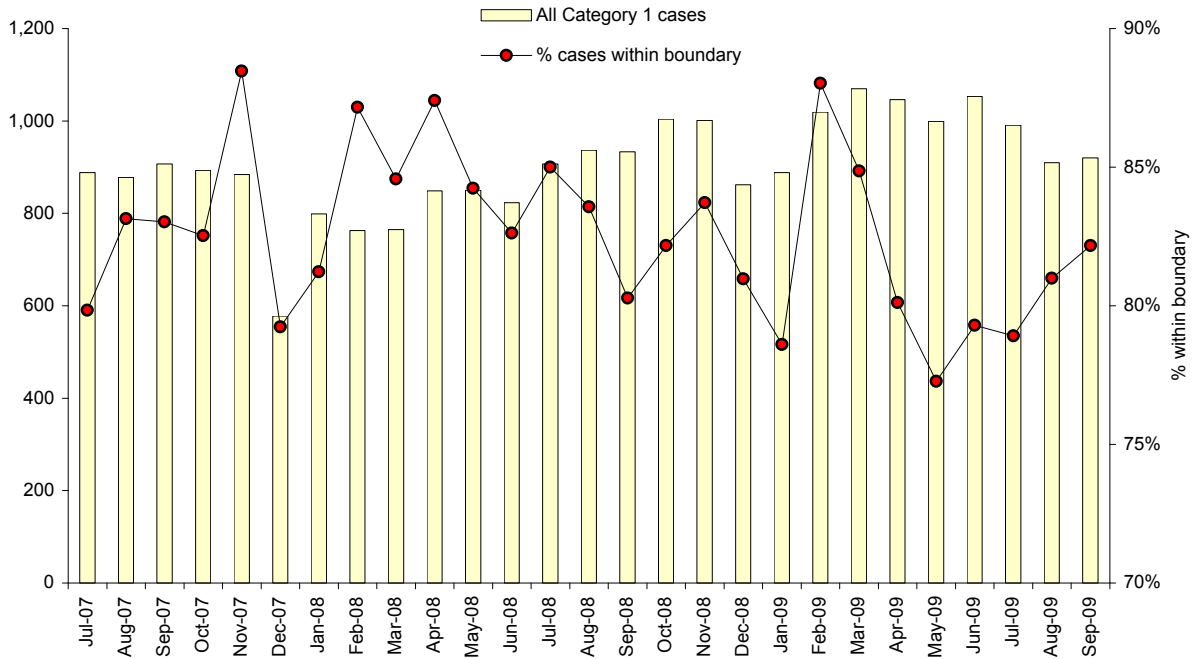


Figure 7: Category 1 cases over the boundary on all public hospital wait lists at end of month, July 2007 - September 2009

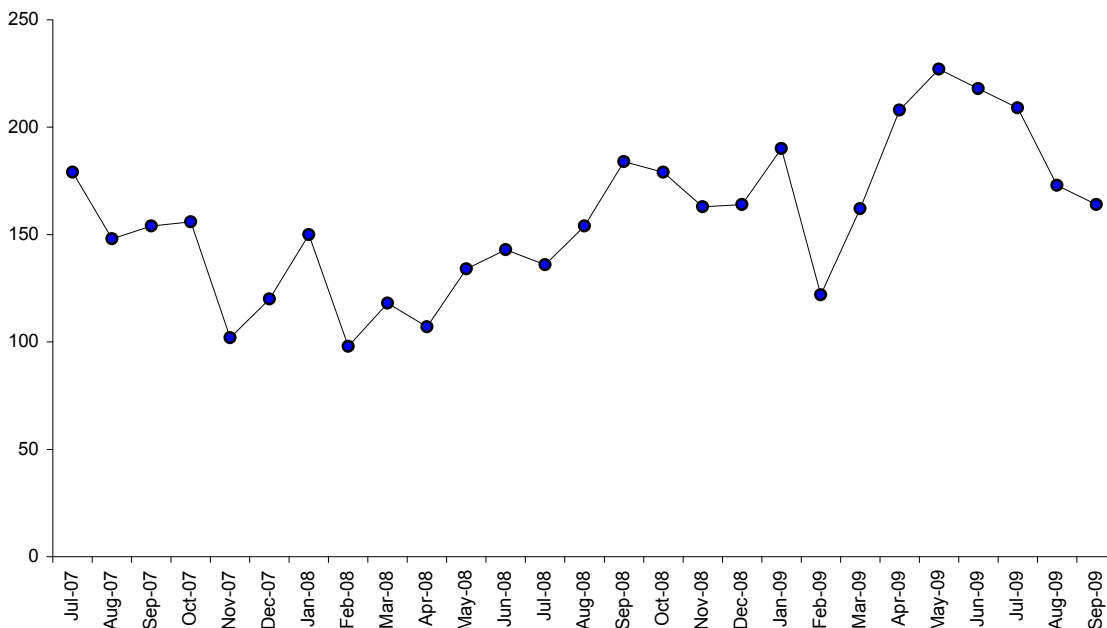


Figure 8: Category 2 cases & proportion (%) of cases within boundary on all public hospital wait lists at end of month, July 2007 - September 2009

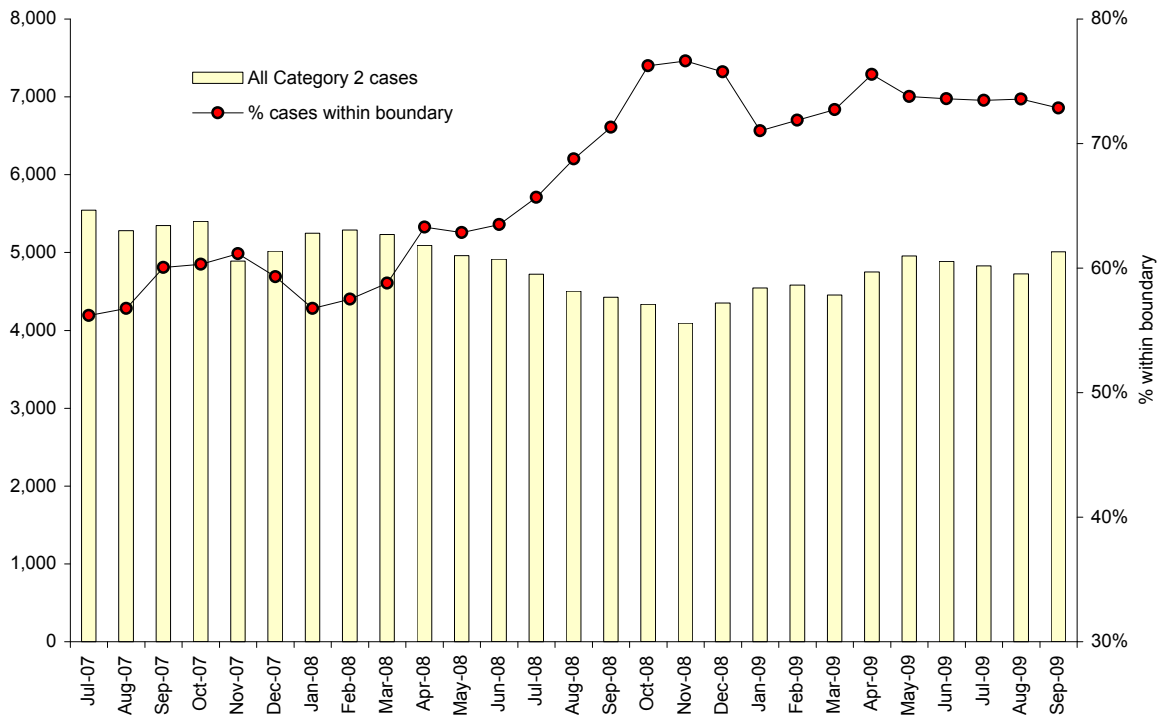
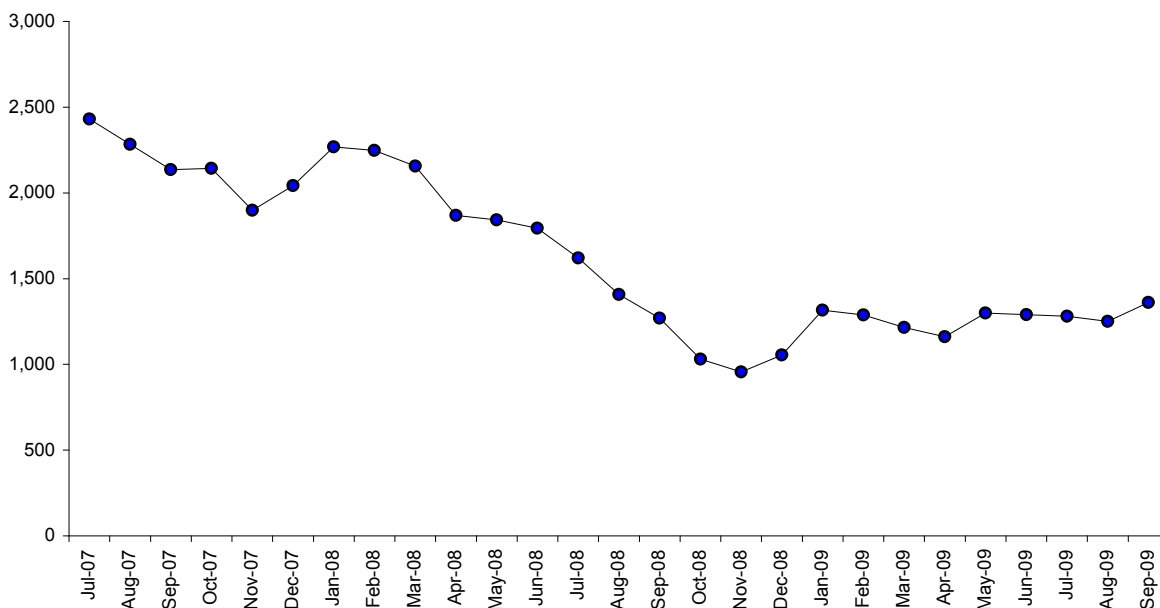


Figure 9: Category 2 cases over the boundary on all public hospital wait lists at end of month, July 2007 - September 2009



Western Australian Elective Surgery Wait List Report, September 2009

Figure 10: Category 3 cases & proportion (%) of cases within boundary on all public hospital wait lists at end of month, July 2007 - September 2009

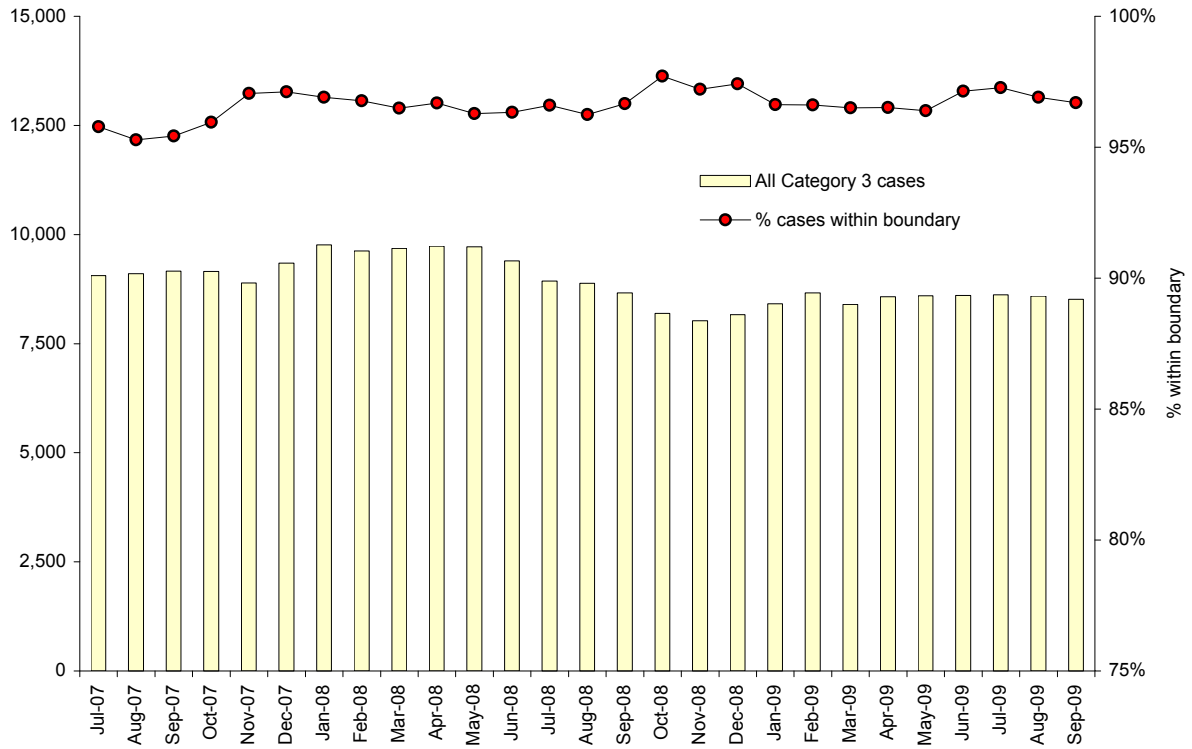


Figure 11: Category 3 cases over the boundary on all public hospital wait lists at end of month, July 2007 - September 2009

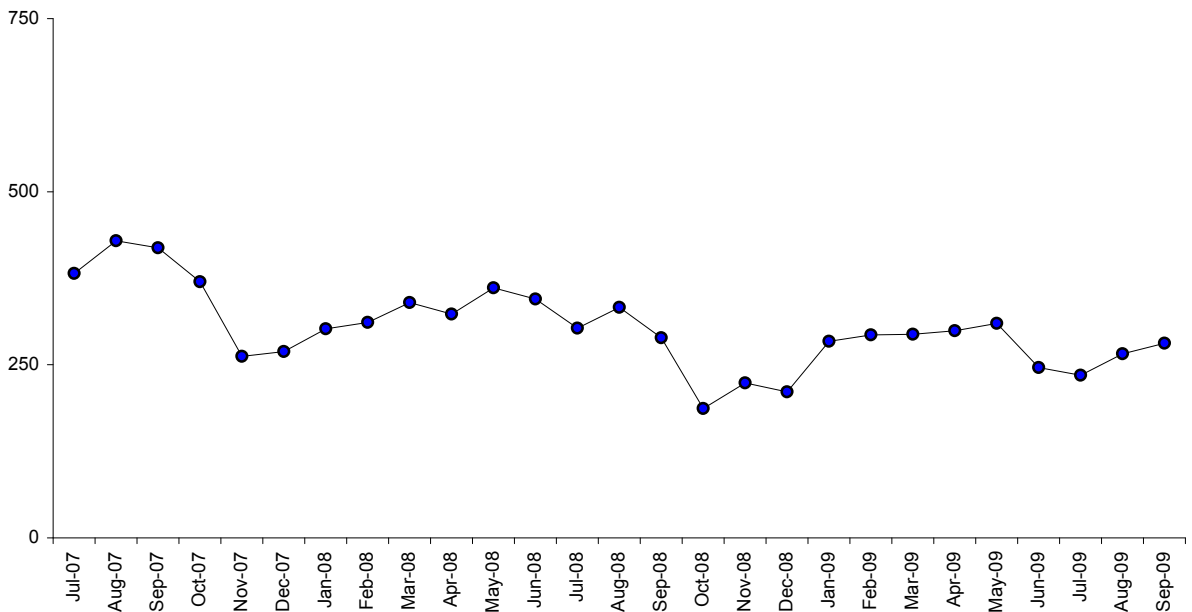


Table 3: ASI cases undertaken by public hospital & region, September 2009

Metropolitan region		Non metropolitan region	
Armadale	70	Albany	66
Bentley	56	Broome	5
Joondalup Health Campus	-	<i>Sub total</i>	71
Kalamunda	-	Total	920
Kaleeya	290		
Osborne Park	313		
Peel Health Campus	-		
Rockingham	44		
Swan District	76		
<i>Sub total</i>	849		

Table 4: Annual summary of admissions from public hospital wait lists & completed ASI cases, 2006/2007, 2007/2008, 2008/2009 & 2009/2010

	Metropolitan	WACHS	Total
Waiting list admissions			
2006/2007	55,498	13,849	69,347
2007/2008	55,678	14,304	69,982
2008/2009	59,248	15,423	74,671
2009/2010 (progressive)	15,755	4,098	19,853
ASI completed cases			
2006/2007	8,384	245	8,629
2007/2008	9,301	1,242	10,543
2008/2009	9,071	778	9,849
2009/2010 (progressive)	2,578	172	2,750
Total (admissions & ASI completed cases)			
2006/2007	63,882	14,094	77,976
2007/2008	64,979	15,546	80,525
2008/2009	68,319	16,201	84,520
2009/2010 (progressive)	18,333	4,270	22,603

Western Australian Elective Surgery Wait List Report, September 2009

Table 5: Monthly ASI cases undertaken at all public hospitals by region, July 2006 - September 2009

	Metro	WACHS	State		Metro	WACHS	State
2006				2009			
July	518	10	528	January	587	74	661
August	645	11	656	February	836	75	911
September	642	22	664	March	869	96	965
October	640	11	651	April	687	57	744
November	736	12	748	May	894	55	949
December	529	13	542	June	797	66	863
2007				July	905	65	970
January	557	-	557	August	824	36	860
February	782	22	804	September	849	71	920
March	801	22	823	October			
April	746	12	758	November			
May	971	-	971	December			
June	817	110	927				
July	871	105	976				
August	946	88	1,034				
September	761	90	851				
October	866	109	975				
November	892	131	1,023				
December	604	80	684				
2008							
January	590	111	701				
February	842	116	958				
March	692	114	806				
April	793	85	878				
May	751	134	885				
June	693	79	772				
July	786	67	853				
August	742	10	752				
September	786	66	852				
October	744	69	813				
November	694	73	767				
December	649	70	719				

Appendices

Table A-1: Wait lists & admissions: all WA public hospitals, July 2006 - December 2008

	Cases on wait lists at end of month								Admissions from wait lists in month							
	Total	Within boundary		Waiting time				Total	Within boundary		Waiting time					
		n	%	Median		90th percentile			n	%	Median		90th percentile			
	Days			Mths	Days	Mths	Days	Mths			Days	Mths				
2006																
Jul	19,978	13,490	67.5	116	3.81	444	14.60	5,820	4,778	82.1	28	0.92	230	7.56		
Aug	19,507	13,133	67.3	108	3.55	444	14.60	6,448	5,288	82.0	28	0.92	212	6.95		
Sep	19,288	13,233	68.6	107	3.52	423	13.91	5,986	4,918	82.2	26	0.85	222	7.28		
Oct	18,949	12,995	68.6	109	3.58	415	13.64	5,858	4,875	83.2	28	0.92	214	7.02		
Nov	18,492	12,918	69.9	104	3.42	391	12.85	6,419	5,368	83.6	26	0.85	196	6.44		
Dec	17,825	12,746	71.5	107	3.52	355	11.67	4,741	3,987	84.1	24	0.79	211	6.92		
2007																
Jan	18,325	12,921	70.5	112	3.68	357	11.74	3,791	3,093	81.6	34	1.12	198	6.49		
Feb	17,895	12,838	71.7	108	3.55	352	11.57	6,088	5,036	82.7	29	0.95	203	6.66		
Mar	17,131	12,510	73.0	110	3.62	336	11.05	6,294	5,205	82.7	27	0.89	239	7.86		
Apr	16,750	12,597	75.2	98	3.22	327	10.75	5,164	4,276	82.8	29	0.95	249	8.19		
May	16,165	12,711	78.6	86	2.83	295	9.70	6,654	5,571	83.7	30	0.97	243	7.99		
Jun	15,583	12,565	80.6	82	2.70	289	9.50	6,084	5,020	82.5	29	0.95	241	7.92		
Jul	15,490	12,499	80.7	82	2.70	291	9.57	5,959	5,089	85.4	27	0.89	216	7.10		
Aug	15,262	12,401	81.3	79	2.60	289	9.50	6,516	5,565	85.4	28	0.92	194	6.38		
Sep	15,419	12,710	82.4	76	2.50	290	9.53	5,645	4,854	86.0	26	0.85	179	5.88		
Oct	15,450	12,780	82.7	76	2.50	273	8.98	5,958	5,148	86.4	28	0.92	187	6.15		
Nov	14,665	12,402	84.6	73	2.40	254	8.35	6,504	5,624	86.5	27	0.89	190	6.23		
Dec	14,941	12,509	83.7	80	2.63	262	8.61	4,706	4,082	86.7	25	0.82	164	5.39		
2008																
Jan	15,809	13,088	82.8	87	2.86	267	8.78	4,004	3,421	85.4	36	1.18	180	5.92		
Feb	15,676	13,019	83.1	88	2.89	267	8.78	6,007	5,139	85.6	29	0.95	188	6.18		
Mar	15,679	13,064	83.3	82	2.70	278	9.14	5,648	4,821	85.4	28	0.92	180	5.90		
Apr	15,675	13,377	85.3	78	2.56	280	9.21	6,154	5,399	87.7	28	0.92	189	6.21		
May	15,526	13,188	84.9	78	2.56	280	9.21	6,551	5,782	88.3	27	0.89	200	6.58		
Jun	15,132	12,850	84.9	76	2.50	284	9.34	6,387	5,622	88.0	28	0.92	185	6.07		
Jul	14,560	12,500	85.9	76	2.50	279	9.17	6,498	5,704	87.8	28	0.92	196	6.44		
Aug	14,324	12,430	86.8	73	2.40	278	9.14	6,545	5,694	87.0	28	0.92	193	6.35		
Sep	14,017	12,275	87.6	67	2.20	257	8.45	6,431	5,656	87.9	28	0.92	191	6.28		
Oct	13,534	12,138	89.7	60	1.97	239	7.86	6,719	5,857	87.2	31	1.02	187	6.15		
Nov	13,115	11,772	89.8	60	1.97	237	7.79	6,643	5,873	88.4	28	0.92	172	5.65		
Dec	13,376	11,946	89.3	63	2.07	243	7.99	5,359	4,748	88.6	25	0.82	157	5.16		

Elective Surgery Wait List Report, September 2009

**Table A-3: Wait lists & admissions: public metropolitan hospitals,
July 2006 - December 2008**

	Cases on wait lists at end of month							Admissions from wait lists in month						
	Total	Within boundary		Waiting time				Total	Within boundary		Waiting time			
		n	%	Median		90th percentile			n	%	Median		90th percentile	
	Days			Mths	Days	Mths	Days	Mths			Days	Mths		
2006														
Jul	16,439	11,111	67.6	112	3.68	419	13.78	4,704	3,731	79.3	32	1.05	230	7.56
Aug	16,007	10,834	67.7	106	3.48	416	13.68	5,180	4,107	79.3	33	1.08	228	7.50
Sep	15,811	10,878	68.8	106	3.48	402	13.22	4,794	3,788	79.0	28	0.92	241	7.91
Oct	15,570	10,698	68.7	108	3.55	389	12.79	4,723	3,814	80.8	31	1.02	230	7.56
Nov	15,364	10,693	69.6	104	3.42	374	12.30	5,101	4,147	81.3	28	0.92	217	7.13
Dec	15,242	10,598	69.5	109	3.58	357	11.74	3,850	3,141	81.6	26	0.85	238	7.81
2007														
Jan	15,583	10,526	67.5	116	3.81	362	11.90	3,171	2,520	79.5	35	1.15	203	6.67
Feb	15,181	10,401	68.5	112	3.68	362	11.90	4,836	3,859	79.8	34	1.12	223	7.32
Mar	14,375	10,038	69.8	114	3.75	346	11.38	4,907	3,907	79.6	31	1.02	260	8.55
Apr	13,936	10,044	72.1	103	3.39	336	11.05	4,221	3,380	80.1	31	1.02	280	9.21
May	13,409	10,170	75.8	91	2.99	299	9.83	5,184	4,163	80.3	34	1.12	276	9.07
Jun	13,037	10,197	78.2	86	2.83	290	9.53	4,827	3,820	79.1	32	1.05	267	8.78
Jul	12,835	10,038	78.2	83	2.73	293	9.63	4,748	3,918	82.5	30	0.99	232	7.63
Aug	12,622	9,892	78.4	80	2.63	292	9.60	5,148	4,250	82.6	32	1.05	215	7.07
Sep	12,736	10,141	79.6	80	2.63	292	9.60	4,529	3,772	83.3	27	0.89	190	6.25
Oct	12,744	10,207	80.1	77	2.53	275	9.04	4,659	3,892	83.5	31	1.02	209	6.87
Nov	12,039	9,887	82.1	74	2.43	256	8.42	5,064	4,225	83.4	30	0.99	221	7.27
Dec	12,241	9,924	81.1	80	2.63	263	8.65	3,821	3,221	84.3	28	0.92	182	5.98
2008														
Jan	12,885	10,319	80.1	87	2.86	267	8.78	3,254	2,700	83.0	37	1.22	198	6.51
Feb	12,757	10,244	80.3	90	2.96	268	8.81	4,799	4,000	83.4	34	1.12	199	6.54
Mar	12,698	10,243	80.7	83	2.73	280	9.21	4,442	3,684	82.9	30	0.99	190	6.25
Apr	12,597	10,478	83.2	79	2.60	281	9.24	4,887	4,182	85.6	29	0.95	200	6.58
May	12,327	10,230	83.0	78	2.56	280	9.21	5,262	4,537	86.2	30	0.99	211	6.94
Jun	11,997	10,006	83.4	75	2.47	284	9.34	5,122	4,414	86.2	30	0.99	196	6.43
Jul	11,567	9,755	84.3	72	2.37	275	9.04	5,198	4,482	86.2	30	0.99	204	6.71
Aug	11,345	9,716	85.6	69	2.27	270	8.88	5,295	4,517	85.3	30	0.99	198	6.49
Sep	11,106	9,592	86.4	64	2.10	252	8.28	5,145	4,442	86.3	30	0.99	193	6.33
Oct	10,786	9,511	88.2	59	1.94	232	7.63	5,297	4,518	85.3	34	1.12	191	6.28
Nov	10,451	9,246	88.5	58	1.91	229	7.53	5,296	4,593	86.7	30	0.99	174	5.70
Dec	10,740	9,465	88.1	62	2.04	233	7.66	4,217	3,667	87.0	27	0.89	163	5.34

Elective Surgery Wait List Report, September 2009

Table A-4: Wait lists & admissions: public metropolitan hospitals, January 2009 - September 2009

	Cases on wait lists at end of month								Admissions from wait lists in month								
	Total	Within boundary		Waiting time				Total	Within boundary		Waiting time						
		n	%	Median		90th percentile			n	%	Median		90th percentile				
	Days			Mths	Days	Mths	Days	Mths			Days	Mths					
2009																	
Jan	11,140	9,568	85.9	72	2.37	244	8.02	3,692	3,164	85.7	34	1.12	149	4.90			
Feb	11,432	9,894	86.5	73	2.40	250	8.20	4,871	4,144	85.1	30	0.99	158	5.19			
Mar	11,163	9,665	86.6	62	2.04	252	8.28	5,457	4,641	85.0	29	0.95	161	5.29			
Apr	11,674	10,167	87.1	62	2.04	247	8.12	4,282	3,687	86.1	29	0.94	170	5.59			
May	11,716	10,072	86.0	64	2.09	246	8.09	5,186	4,418	85.2	34	1.12	168	5.52			
Jun	11,633	10,056	86.4	62	2.04	244	8.02	5,312	4,502	84.8	32	1.05	154	5.06			
Jul	11,494	9,925	86.3	64	2.10	244	8.02	5,148	4,400	85.5	34	1.12	151	4.96			
Aug	11,205	9,706	86.6	62	2.04	244	8.02	5,531	4,744	85.8	34	1.12	161	5.29			
Sep	11,394	9,834	86.3	58	1.91	237	7.79	5,076	4,450	87.7	28	0.92	162	5.31			
Oct																	
Nov																	
Dec																	
2010																	
Jan																	
Feb																	
Mar																	
Apr																	
May																	
Jun																	
Jul																	
Aug																	
Sep																	
Oct																	
Nov																	
Dec																	

Elective Surgery Wait List Report, September 2009

Table A-6: Wait lists & admissions: public WACHS hospitals, January 2009 - September 2009

	Cases on wait lists at end of month							Admissions from wait lists in month						
	Total	Within boundary		Waiting time				Total	Within boundary		Waiting time			
		n	%	Median		90th percentile			n	%	Median		90th percentile	
	Days			Mths	Days	Mths	Days	Mths			Days	Mths		
2009														
Jan	2,707	2,489	91.9	87	2.86	297	9.76	958	882	92.1	30	0.99	111	3.65
Feb	2,836	2,670	94.1	78	2.56	283	9.30	1,307	1,252	95.8	21	0.69	145	4.75
Mar	2,759	2,586	93.7	60	1.97	274	9.01	1,389	1,322	95.2	20	0.66	151	4.96
Apr	2,694	2,533	94.0	64	2.10	267	8.78	1,301	1,240	95.3	23	0.76	149	4.90
May	2,837	2,664	93.2	66	2.17	273	8.98	1,338	1,265	94.5	24	0.79	125	4.11
Jun	2,908	2,731	93.9	55	1.81	268	8.81	1,383	1,283	92.8	25	0.82	145	4.77
Jul	2,944	2,788	94.7	60	1.97	267	8.78	1,386	1,320	95.2	24	0.79	141	4.62
Aug	3,019	2,829	93.7	62	2.04	272	8.94	1,311	1,233	94.1	26	0.85	150	4.93
Sep	3,052	2,807	92.0	63	2.07	292	9.60	1,401	1,325	94.6	24	0.79	112	3.68
Oct														
Nov														
Dec														
2010														
Jan														
Feb														
Mar														
Apr														
May														
Jun														
Jul														
Aug														
Sep														
Oct														
Nov														
Dec														

Elective Surgery Wait List Report, September 2009

Table A-7: Cases on wait lists by duration: all public hospitals, July 2006 - December 2008

	Within 365 days		366 - 500 days		More than 500 days		More than 365 days		Total
	n	%	n	%	n	%	n	%	
2006									
July	17,053	85.4	1,420	7.1	1,505	7.5	2,925	14.6	19,978
August	16,653	85.4	1,381	7.1	1,473	7.6	2,854	14.6	19,507
September	16,591	86.0	1,369	7.1	1,328	6.9	2,697	14.0	19,288
October	16,456	86.8	1,265	6.7	1,228	6.5	2,493	13.2	18,949
November	16,312	88.2	1,282	6.9	898	4.9	2,180	11.8	18,492
December	16,149	90.6	1,357	7.6	319	1.8	1,676	9.4	17,825
2007									
January	16,630	90.8	1,302	7.1	393	2.1	1,695	9.2	18,325
February	16,316	91.2	1,209	6.8	370	2.1	1,579	8.8	17,895
March	15,772	92.1	1,023	6.0	336	2.0	1,359	7.9	17,131
April	15,598	93.1	773	4.6	379	2.3	1,152	6.9	16,750
May	15,332	94.8	611	3.8	222	1.4	833	5.2	16,165
June	15,109	97.0	381	2.4	93	0.6	474	3.0	15,583
July	14,906	96.2	467	3.0	117	0.8	584	3.8	15,490
August	14,623	95.8	542	3.6	97	0.6	639	4.2	15,262
September	14,782	95.9	547	3.5	90	0.6	637	4.1	15,419
October	14,877	96.3	467	3.0	106	0.7	573	3.7	15,450
November	14,301	97.5	305	2.1	59	0.4	364	2.5	14,665
December	14,574	97.5	303	2.0	64	0.4	367	2.5	14,941
2008									
January	15,389	97.3	328	2.1	92	0.6	420	2.7	15,809
February	15,222	97.1	366	2.3	88	0.6	454	2.9	15,676
March	15,166	96.7	437	2.8	76	0.5	513	3.3	15,679
April	15,184	96.9	403	2.6	88	0.6	491	3.1	15,675
May	15,005	96.6	429	2.8	92	0.6	521	3.4	15,526
June	14,642	96.8	420	2.8	70	0.5	490	3.2	15,132
July	14,136	97.1	365	2.5	59	0.4	424	2.9	14,560
August	13,895	97.0	357	2.5	72	0.5	429	3.0	14,324
September	13,649	97.4	313	2.2	55	0.4	368	2.6	14,017
October	13,292	98.2	209	1.5	33	0.2	242	1.8	13,534
November	12,997	99.1	99	0.8	19	0.1	118	0.9	13,115
December	13,127	98.1	226	1.7	23	0.2	249	1.9	13,376

Elective Surgery Wait List Report, September 2009

Table A-8: Cases on wait lists by duration: all public hospitals, January 2009 - September 2009

	Within 365 days		366 - 500 days		More than 500 days		More than 365 days		Total
	n	%	n	%	n	%	n	%	
2009									
January	13,507	97.5	299	2.2	41	0.3	340	2.5	13,847
February	13,919	97.6	298	2.1	51	0.4	349	2.4	14,268
March	13,574	97.5	312	2.2	36	0.3	348	2.5	13,922
April	14,014	97.5	316	2.2	38	0.3	354	2.5	14,368
May	14,173	97.4	338	2.3	42	0.3	380	2.6	14,553
June	14,233	97.9	270	1.9	38	0.3	308	2.1	14,541
July	14,138	97.9	251	1.7	49	0.3	300	2.1	14,438
August	13,881	97.6	287	2.0	56	0.4	343	2.4	14,224
September	14,086	97.5	309	2.1	51	0.4	360	2.5	14,446
October									
November									
December									
2010									
January									
February									
March									
April									
May									
June									
July									
August									
September									
October									
November									
December									

Elective Surgery Wait List Report, September 2009

Table A-9: Cases on wait lists by duration: metropolitan public hospitals, July 2006 - December 2008

	Within 365 days		366 - 500 days		More than 500 days		More than 365 days		Total
	n	%	n	%	n	%	n	%	
2006									
July	14,242	86.6	1,197	7.3	1,000	6.1	2,197	13.4	16,439
August	13,890	86.8	1,128	7.0	989	6.2	2,117	13.2	16,007
September	13,836	87.5	1,107	7.0	868	5.5	1,975	12.5	15,811
October	13,751	88.3	1,049	6.7	770	4.9	1,819	11.7	15,570
November	13,724	89.3	1,093	7.1	547	3.6	1,640	10.7	15,364
December	13,759	90.3	1,201	7.9	282	1.9	1,483	9.7	15,242
2007									
January	14,072	90.3	1,149	7.4	362	2.3	1,511	9.7	15,583
February	13,741	90.5	1,087	7.2	353	2.3	1,440	9.5	15,181
March	13,144	91.4	910	6.3	321	2.2	1,231	8.6	14,375
April	12,908	92.6	665	4.8	363	2.6	1,028	7.4	13,936
May	12,669	94.5	527	3.9	213	1.6	740	5.5	13,409
June	12,635	96.9	316	2.4	86	0.7	402	3.1	13,037
July	12,342	96.2	390	3.0	103	0.8	493	3.8	12,835
August	12,060	95.5	479	3.8	83	0.7	562	4.5	12,622
September	12,179	95.6	488	3.8	69	0.5	557	4.4	12,736
October	12,252	96.1	413	3.2	79	0.6	492	3.9	12,744
November	11,753	97.6	244	2.0	42	0.3	286	2.4	12,039
December	11,942	97.6	256	2.1	43	0.4	299	2.4	12,241
2008									
January	12,544	97.4	275	2.1	66	0.5	341	2.6	12,885
February	12,354	96.8	324	2.5	79	0.6	403	3.2	12,757
March	12,253	96.5	374	2.9	71	0.6	445	3.5	12,698
April	12,175	96.6	343	2.7	79	0.6	422	3.4	12,597
May	11,892	96.5	353	2.9	82	0.7	435	3.5	12,327
June	11,589	96.6	343	2.9	65	0.5	408	3.4	11,997
July	11,244	97.2	277	2.4	46	0.4	323	2.8	11,567
August	11,022	97.2	271	2.4	52	0.5	323	2.8	11,345
September	10,819	97.4	247	2.2	40	0.4	287	2.6	11,106
October	10,590	98.2	178	1.7	18	0.2	196	1.8	10,786
November	10,392	99.4	45	0.4	14	0.1	59	0.6	10,451
December	10,558	98.3	164	1.5	18	0.2	182	1.7	10,740

Elective Surgery Wait List Report, September 2009

Table A-10: Cases on wait lists by duration: metropolitan public hospitals, January 2009 - September 2009

	Within 365 days		366 - 500 days		More than 500 days		More than 365 days		Total
	n	%	n	%	n	%	n	%	
2009									
January	10,897	97.8	212	1.9	31	0.3	243	2.2	11,140
February	11,155	97.6	237	2.1	40	0.3	277	2.4	11,432
March	10,895	97.6	235	2.1	33	0.3	268	2.4	11,163
April	11,385	97.5	258	2.2	31	0.3	289	2.5	11,674
May	11,408	97.4	275	2.3	33	0.3	308	2.6	11,716
June	11,380	97.8	222	1.9	31	0.3	253	2.2	11,633
July	11,251	97.9	201	1.7	42	0.4	243	2.1	11,494
August	10,941	97.6	223	2.0	41	0.4	264	2.4	11,205
September	11,148	97.8	212	1.9	34	0.3	246	2.2	11,394
October									
November									
December									
2010									
January									
February									
March									
April									
May									
June									
July									
August									
September									
October									
November									
December									

Elective Surgery Wait List Report, September 2009

Table A-11: Cases on wait lists by duration: WACHS public hospitals, July 2006 - December 2008

	Within 365 days		366 – 500 days		More than 500 days		More than 365 days		Total
	n	%	n	%	n	%	n	%	
2006									
July	2,811	79.4	223	6.3	505	14.3	728	20.6	3,539
August	2,763	78.9	253	7.2	484	13.8	737	21.1	3,500
September	2,755	79.2	262	7.5	460	13.2	722	20.8	3,477
October	2,705	80.1	216	6.4	458	13.6	674	19.9	3,379
November	2,588	82.7	189	6.0	351	11.2	540	17.3	3,128
December	2,390	92.5	156	6.0	37	1.4	193	7.5	2,583
2007									
January	2,558	93.3	153	5.6	31	1.1	184	6.7	2,742
February	2,575	94.9	122	4.5	17	0.6	139	5.1	2,714
March	2,628	95.4	113	4.1	15	0.5	128	4.6	2,756
April	2,690	95.6	108	3.8	16	0.6	124	4.4	2,814
May	2,663	96.6	84	3.0	9	0.3	93	3.4	2,756
June	2,474	97.2	65	2.6	7	0.3	72	2.8	2,546
July	2,564	96.6	77	2.9	14	0.5	91	3.4	2,655
August	2,563	97.1	63	2.4	14	0.5	77	2.9	2,640
September	2,603	97.0	59	2.2	21	0.8	80	3.0	2,683
October	2,625	97.0	54	2.0	27	1.0	81	3.0	2,706
November	2,548	97.0	61	2.3	17	0.6	78	3.0	2,626
December	2,632	97.5	47	1.7	21	0.8	68	2.5	2,700
2008									
January	2,845	97.3	53	1.8	26	0.9	79	2.7	2,924
February	2,868	98.3	42	1.4	9	0.3	51	1.7	2,919
March	2,913	97.7	63	2.1	5	0.2	68	2.3	2,981
April	3,009	97.8	60	1.9	9	0.3	69	2.2	3,078
May	3,113	97.3	76	2.4	10	0.3	86	2.7	3,199
June	3,053	97.4	77	2.5	5	0.2	82	2.6	3,135
July	2,892	96.6	88	2.9	13	0.4	101	3.4	2,993
August	2,873	96.4	86	2.9	20	0.7	106	3.6	2,979
September	2,830	97.2	66	2.3	15	0.5	81	2.8	2,911
October	2,702	98.3	31	1.1	15	0.5	46	1.7	2,748
November	2,605	97.8	54	2.0	5	0.2	59	2.2	2,664
December	2,569	97.5	62	2.4	5	0.2	67	2.5	2,636

Elective Surgery Wait List Report, September 2009

Table A-12: Cases on wait lists by duration: WACHS public hospitals, January 2009 - September 2009

	Within 365 days		366 – 500 days		More than 500 days		More than 365 days		Total
	n	%	n	%	n	%	n	%	
2009									
January	2,610	96.4	87	3.2	10	0.4	97	3.6	2,707
February	2,764	97.5	61	2.2	11	0.4	72	2.5	2,836
March	2,679	97.1	77	2.8	3	0.1	80	2.9	2,759
April	2,629	97.6	58	2.2	7	0.3	65	2.4	2,694
May	2,765	97.5	63	2.2	9	0.3	72	2.5	2,837
June	2,853	98.1	48	1.7	7	0.2	55	1.9	2,908
July	2,887	98.1	50	1.7	7	0.2	57	1.9	2,944
August	2,940	97.4	64	2.1	15	0.5	79	2.6	3,019
September	2,938	96.3	97	3.2	17	0.6	114	3.7	3,052
October									
November									
December									
2010									
January									
February									
March									
April									
May									
June									
July									
August									
September									
October									
November									
December									

Elective Surgery Wait List Report, September 2009

Table A-13: Category 1 cases on public hospital wait lists by duration, July 2006 - December 2008

	Metropolitan hospitals				WACHS				State			
	Within 30 days		> 30 days	Total	Within 30 days		> 30 days	Total	Within 30 days		> 30 days	Total
	n	%	n		n	%	n		n	%	n	
2006												
July	608	77.7	174	782	122	56.0	96	218	730	73.0	270	1,000
August	689	86.1	111	800	103	48.6	109	212	792	78.3	220	1,012
September	666	88.4	87	753	75	41.7	105	180	741	79.4	192	933
October	682	85.3	118	800	96	47.8	105	201	778	77.7	223	1,001
November	748	86.7	115	863	106	56.7	81	187	854	81.3	196	1,050
December	577	79.8	146	723	39	90.7	4	43	616	80.4	150	766
2007												
January	622	74.5	213	835	44	74.6	15	59	666	74.5	228	894
February	662	82.9	137	799	50	92.6	4	54	712	83.5	141	853
March	615	82.8	128	743	38	67.9	18	56	653	81.7	146	799
April	597	82.0	131	728	34	68.0	16	50	631	81.1	147	778
May	692	84.0	132	824	108	90.0	12	120	800	84.7	144	944
June	707	82.0	155	862	49	66.2	25	74	756	80.8	180	936
July	640	80.8	152	792	69	71.9	27	96	709	79.8	179	888
August	670	83.1	136	806	60	83.3	12	72	730	83.1	148	878
September	691	82.8	144	835	62	86.1	10	72	753	83.0	154	907
October	642	81.8	143	785	95	88.0	13	108	737	82.5	156	893
November	727	89.2	88	815	55	79.7	14	69	782	88.5	102	884
December	430	79.8	109	539	28	71.8	11	39	458	79.2	120	578
2008												
January	594	81.1	138	732	55	82.1	12	67	649	81.2	150	799
February	598	88.1	81	679	67	79.8	17	84	665	87.2	98	763
March	597	86.0	97	694	50	70.4	21	71	647	84.6	118	765
April	671	88.6	86	757	71	77.2	21	92	742	87.4	107	849
May	633	87.0	95	728	83	68.0	39	122	716	84.2	134	850
June	598	87.3	87	685	82	59.4	56	138	680	82.6	143	823
July	664	85.8	110	774	107	80.5	26	133	771	85.0	136	907
August	655	83.5	129	784	128	83.7	25	153	783	83.6	154	937
September	640	80.0	160	800	109	82.0	24	133	749	80.3	184	933
October	727	82.1	159	886	98	83.1	20	118	825	82.2	179	1,004
November	733	83.5	145	878	105	85.4	18	123	838	83.7	163	1,001
December	594	80.7	142	736	104	82.5	22	126	698	81.0	164	862

Elective Surgery Wait List Report, September 2009

Table A-14: Category 1 cases on public hospital wait lists by duration, January 2009 - September 2009

	Metropolitan hospitals				WACHS				State			
	Within 30 days		> 30 days	Total	Within 30 days		> 30 days	Total	Within 30 days		> 30 days	Total
	n	%	n		n	%	n		n	%	n	
2009												
January	653	79.3	170	823	45	69.2	20	65	698	78.6	190	888
February	762	87.4	110	872	135	91.8	12	147	897	88.0	122	1,019
March	755	84.5	138	893	153	86.4	24	177	908	84.9	162	1,070
April	726	80.4	177	903	112	78.3	31	143	838	80.1	208	1,046
May	662	77.5	192	854	110	75.9	35	145	772	77.3	227	999
June	725	79.8	183	908	110	75.9	35	145	835	79.3	218	1,053
July	651	79.2	171	822	131	77.5	38	169	782	78.9	209	991
August	619	81.7	139	758	118	77.6	34	152	737	81.0	173	910
September	630	82.7	132	762	126	79.7	32	158	756	82.2	164	920
October												
November												
December												
2010												
January												
February												
March												
April												
May												
June												
July												
August												
September												
October												
November												
December												

Elective Surgery Wait List Report, September 2009

Table A-15: Category 2 cases on public hospital wait lists by duration, July 2006 - December 2008

	Metropolitan hospitals				WACHS				State			
	Within 90 days		> 90 days	Total	Within 90 days		> 90 days	Total	Within 90 days		> 90 days	Total
	n	%	n		n	%	n		n	%	n	
2006												
July	3,308	47.9	3,591	6,899	468	47.3	521	989	3,776	47.9	4,112	7,888
August	3,025	45.9	3,571	6,596	432	43.9	552	984	3,457	45.6	4,123	7,580
September	3,218	47.9	3,503	6,721	462	48.5	491	953	3,680	48.0	3,994	7,674
October	3,090	46.8	3,512	6,602	418	46.8	476	894	3,508	46.8	3,988	7,496
November	2,958	46.2	3,447	6,405	375	48.0	407	782	3,333	46.4	3,854	7,187
December	2,884	44.9	3,536	6,420	352	56.1	276	628	3,236	45.9	3,812	7,048
2007												
January	2,720	41.1	3,896	6,616	412	72.7	155	567	3,132	43.6	4,051	7,183
February	2,662	41.3	3,781	6,443	420	74.9	141	561	3,082	44.0	3,922	7,004
March	2,591	42.7	3,484	6,075	398	73.2	146	544	2,989	45.2	3,630	6,619
April	2,720	46.6	3,122	5,842	471	78.0	133	604	3,191	49.5	3,255	6,446
May	2,691	50.5	2,639	5,330	459	78.3	127	586	3,150	53.2	2,766	5,916
June	2,689	52.4	2,445	5,134	433	83.4	86	519	3,122	55.2	2,531	5,653
July	2,691	53.4	2,350	5,041	425	84.2	80	505	3,116	56.2	2,430	5,546
August	2,631	54.0	2,240	4,871	367	89.3	44	411	2,998	56.8	2,284	5,282
September	2,862	57.6	2,110	4,972	350	93.1	26	376	3,212	60.1	2,136	5,348
October	2,922	58.1	2,105	5,027	336	89.6	39	375	3,258	60.3	2,144	5,402
November	2,636	58.4	1,880	4,516	355	94.9	19	374	2,991	61.2	1,899	4,890
December	2,689	57.3	2,007	4,696	288	88.9	36	324	2,977	59.3	2,043	5,020
2008												
January	2,642	54.5	2,205	4,847	338	84.1	64	402	2,980	56.8	2,269	5,249
February	2,683	55.3	2,172	4,855	359	82.5	76	435	3,042	57.5	2,248	5,290
March	2,700	56.4	2,085	4,785	376	83.9	72	448	3,076	58.8	2,157	5,233
April	2,817	61.3	1,779	4,596	405	82.0	89	494	3,222	63.3	1,868	5,090
May	2,685	60.9	1,726	4,411	432	78.7	117	549	3,117	62.8	1,843	4,960
June	2,696	62.2	1,638	4,334	424	73.1	156	580	3,120	63.5	1,794	4,914
July	2,675	64.1	1,496	4,171	426	77.3	125	551	3,101	65.7	1,621	4,722
August	2,659	67.8	1,265	3,924	439	75.6	142	581	3,098	68.8	1,407	4,505
September	2,695	70.2	1,142	3,837	460	78.4	127	587	3,155	71.3	1,269	4,424
October	2,801	74.2	973	3,774	503	89.8	57	560	3,304	76.2	1,030	4,334
November	2,691	75.0	895	3,586	445	87.9	61	506	3,136	76.6	956	4,092
December	2,865	74.4	987	3,852	432	86.4	68	500	3,297	75.8	1,055	4,352

Elective Surgery Wait List Report, September 2009

Table A-16: Category 2 cases on public hospital wait lists by duration, January 2009 - September 2009

	Metropolitan hospitals				WACHS				State			
	Within 90 days		> 90 days	Total	Within 90 days		> 90 days	Total	Within 90 days		> 90 days	Total
	n	%	n		n	%	n		n	%	n	
2009												
January	2,735	69.3	1,213	3,948	492	82.7	103	595	3,227	71.0	1,316	4,543
February	2,784	69.8	1,205	3,989	510	85.9	84	594	3,294	71.9	1,289	4,583
March	2,722	70.4	1,146	3,868	519	88.3	69	588	3,241	72.7	1,215	4,456
April	3,038	73.5	1,094	4,132	550	89.1	67	617	3,588	75.6	1,161	4,749
May	3,141	72.1	1,213	4,354	517	85.6	87	604	3,658	73.8	1,300	4,958
June	3,098	72.1	1,201	4,299	499	84.9	89	588	3,597	73.6	1,290	4,887
July	3,045	71.5	1,216	4,261	503	88.6	65	568	3,548	73.5	1,281	4,829
August	2,901	71.2	1,172	4,073	577	88.1	78	655	3,478	73.6	1,250	4,728
September	3,048	70.8	1,258	4,306	601	85.5	102	703	3,649	72.8	1,360	5,009
October												
November												
December												
2010												
January												
February												
March												
April												
May												
June												
July												
August												
September												
October												
November												
December												

Elective Surgery Wait List Report, September 2009

Table A-17: Category 3 cases on public hospital wait lists by duration, July 2006 - December 2008

	Metropolitan hospitals				WACHS				State			
	Within 365 days		> 365 days	Total	Within 365 days		> 365 days	Total	Within 365 days		> 365 days	Total
	n	%	n		n	%	n		n	%	n	
2006												
July	7,195	82.2	1,563	8,758	1,789	76.7	543	2,332	8,984	81.0	2,106	11,090
August	7,120	82.7	1,491	8,611	1,764	76.6	540	2,304	8,884	81.4	2,031	10,915
September	6,994	83.9	1,343	8,337	1,818	77.6	526	2,344	8,812	82.5	1,869	10,681
October	6,926	84.8	1,242	8,168	1,783	78.1	501	2,284	8,709	83.3	1,743	10,452
November	6,987	86.3	1,109	8,096	1,744	80.8	415	2,159	8,731	85.1	1,524	10,255
December	7,137	88.1	962	8,099	1,757	91.9	155	1,912	8,894	88.8	1,117	10,011
2007												
January	7,184	88.3	948	8,132	1,939	91.6	177	2,116	9,123	89.0	1,125	10,248
February	7,077	89.1	862	7,939	1,967	93.7	132	2,099	9,044	90.1	994	10,038
March	6,832	90.4	725	7,557	2,036	94.4	120	2,156	8,868	91.3	845	9,713
April	6,727	91.3	639	7,366	2,048	94.8	112	2,160	8,775	92.1	751	9,526
May	6,787	93.5	468	7,255	1,974	96.3	76	2,050	8,761	94.2	544	9,305
June	6,801	96.6	240	7,041	1,886	96.6	67	1,953	8,687	96.6	307	8,994
July	6,707	95.8	295	7,002	1,967	95.8	87	2,054	8,674	95.8	382	9,056
August	6,591	94.9	354	6,945	2,082	96.5	75	2,157	8,673	95.3	429	9,102
September	6,588	95.1	341	6,929	2,157	96.5	78	2,235	8,745	95.4	419	9,164
October	6,643	95.8	289	6,932	2,142	96.4	81	2,223	8,785	96.0	370	9,155
November	6,524	97.3	184	6,708	2,105	96.4	78	2,183	8,629	97.1	262	8,891
December	6,805	97.1	201	7,006	2,269	97.1	68	2,337	9,074	97.1	269	9,343
2008												
January	7,083	96.9	223	7,306	2,376	96.8	79	2,455	9,459	96.9	302	9,761
February	6,963	96.4	260	7,223	2,349	97.9	51	2,400	9,312	96.8	311	9,623
March	6,946	96.2	273	7,219	2,395	97.3	67	2,462	9,341	96.5	340	9,681
April	6,990	96.5	254	7,244	2,423	97.2	69	2,492	9,413	96.7	323	9,736
May	6,912	96.2	276	7,188	2,443	96.6	85	2,528	9,355	96.3	361	9,716
June	6,712	96.2	266	6,978	2,338	96.7	79	2,417	9,050	96.3	345	9,395
July	6,416	96.9	206	6,622	2,212	95.8	97	2,309	8,628	96.6	303	8,931
August	6,402	96.5	235	6,637	2,147	95.6	98	2,245	8,549	96.3	333	8,882
September	6,257	96.7	212	6,469	2,114	96.5	77	2,191	8,371	96.7	289	8,660
October	5,983	97.7	143	6,126	2,026	97.9	44	2,070	8,009	97.7	187	8,196
November	5,822	97.2	165	5,987	1,976	97.1	59	2,035	7,798	97.2	224	8,022
December	6,006	97.6	146	6,152	1,945	96.8	65	2,010	7,951	97.4	211	8,162

Elective Surgery Wait List Report, September 2009

Table A-18: Category 3 cases on public hospital wait lists by duration, January 2006 - September 2009

	Metropolitan hospitals				WACHS				State			
	Within 365 days		> 365 days	Total	Within 365 days		> 365 days	Total	Within 365 days		> 365 days	Total
	n	%	n		n	%	n		n	%	n	
2009												
January	6,180	97.0	189	6,369	1,952	95.4	95	2,047	8,132	96.6	284	8,416
February	6,348	96.6	223	6,571	2,025	96.7	70	2,095	8,373	96.6	293	8,666
March	6,188	96.7	214	6,402	1,914	96.0	80	1,994	8,102	96.5	294	8,396
April	6,403	96.4	236	6,639	1,871	96.7	63	1,934	8,274	96.5	299	8,573
May	6,269	96.3	239	6,508	2,017	96.6	71	2,088	8,286	96.4	310	8,596
June	6,233	97.0	193	6,426	2,122	97.6	53	2,175	8,355	97.1	246	8,601
July	6,229	97.2	182	6,411	2,154	97.6	53	2,207	8,383	97.3	235	8,618
August	6,186	97.1	188	6,374	2,134	96.5	78	2,212	8,320	96.9	266	8,586
September	6,156	97.3	170	6,326	2,080	94.9	111	2,191	8,236	96.7	281	8,517
October												
November												
December												
2010												
January												
February												
March												
April												
May												
June												
July												
August												
September												
October												
November												
December												

Elective Surgery Wait List Report, September 2009

Table A-19: Admissions from wait lists by urgency category: all public hospitals, July 2006 - December 2008

	Urgency category			Total
	1	2	3	
2006				
July	1,630	2,071	2,119	5,820
August	1,901	2,324	2,223	6,448
September	1,749	2,036	2,201	5,986
October	1,558	2,132	2,163	5,853
November	1,826	2,197	2,396	6,419
December	1,481	1,559	1,701	4,741
2007				
January	1,172	1,116	1,503	3,791
February	1,626	2,082	2,380	6,088
March	1,594	2,207	2,493	6,294
April	1,406	1,686	2,072	5,164
May	1,721	2,302	2,631	6,654
June	1,582	2,142	2,360	6,084
July	1,701	2,012	2,246	5,959
August	1,818	2,244	2,454	6,516
September	1,623	1,890	2,075	5,588
October	1,673	1,924	2,361	5,958
November	1,827	2,259	2,418	6,504
December	1,473	1,558	1,675	4,706
2008				
January	1,226	1,269	1,509	4,004
February	1,567	1,979	2,461	6,007
March	1,556	1,944	2,148	5,648
April	1,691	2,051	2,412	6,154
May	1,754	2,239	2,558	6,551
June	1,719	2,185	2,483	6,387
July	1,846	2,136	2,516	6,498
August	1,845	2,199	2,501	6,545
September	1,841	2,138	2,452	6,431
October	1,809	2,236	2,674	6,719
November	1,869	2,302	2,472	6,643
December	1,726	1,689	1,944	5,359

Table A-20: Admissions from wait lists by urgency category: all public hospitals, January 2009 - September 2009

	Urgency category			Total
	1	2	3	
2009				
January	1,426	1,558	1,666	4,650
February	1,753	2,095	2,330	6,178
March	1,984	2,447	2,415	6,846
April	1,651	1,875	2,057	5,583
May	1,860	2,243	2,421	6,524
June	1,784	2,411	2,500	6,695
July	1,797	2,299	2,438	6,534
August	1,771	2,480	2,591	6,842
September	1,696	2,280	2,501	6,477
October				
November				
December				
2010				
January				
February				
March				
April				
May				
June				
July				
August				
September				
October				
November				
December				

Elective Surgery Wait List Report, September 2009

Table A-21: Admissions from wait lists by urgency category: metropolitan public hospitals, July 2006 - December 2008

	Urgency category			Total
	1	2	3	
2006				
July	1,442	1,679	1,583	4,704
August	1,675	1,869	1,636	5,180
September	1,567	1,628	1,599	4,794
October	1,424	1,712	1,587	4,723
November	1,611	1,734	1,756	5,101
December	1,336	1,256	1,258	3,850
2007				
January	1,094	970	1,107	3,171
February	1,499	1,623	1,714	4,836
March	1,467	1,677	1,763	4,907
April	1,322	1,378	1,521	4,221
May	1,570	1,754	1,860	5,184
June	1,431	1,688	1,708	4,827
July	1,571	1,552	1,625	4,748
August	1,613	1,755	1,780	5,148
September	1,488	1,564	1,477	4,529
October	1,510	1,507	1,642	4,659
November	1,603	1,762	1,699	5,064
December	1,343	1,258	1,220	3,821
2008				
January	1,099	1,053	1,102	3,254
February	1,432	1,606	1,761	4,799
March	1,399	1,571	1,472	4,442
April	1,537	1,653	1,697	4,887
May	1,601	1,806	1,855	5,262
June	1,541	1,708	1,873	5,122
July	1,573	1,709	1,905	5,187
August	1,548	1,836	1,893	5,277
September	1,542	1,718	1,885	5,145
October	1,534	1,752	2,011	5,297
November	1,578	1,855	1,863	5,296
December	1,474	1,318	1,425	4,217

Table A-22: Admissions from wait lists by urgency category: metropolitan public hospitals, January 2009 - September 2009

	Urgency category			Total
	1	2	3	
2009				
January	1,223	1,193	1,276	3,692
February	1,533	1,582	1,756	4,871
March	1,699	1,946	1,812	5,457
April	1,351	1,426	1,505	4,282
May	1,569	1,780	1,837	5,186
June	1,512	1,984	1,816	5,312
July	1,529	1,847	1,772	5,148
August	1,469	2,126	1,936	5,531
September	1,401	1,831	1,844	5,076
October				
November				
December				
2010				
January				
February				
March				
April				
May				
June				
July				
August				
September				
October				
November				
December				

Elective Surgery Wait List Report, September 2009

Table A-23: Admissions from wait lists by urgency category: WACHS public hospitals, July 2006 - December 2008

	Urgency category			Total
	1	2	3	
2006				
July	188	392	536	1,116
August	226	455	587	1,268
September	182	408	602	1,192
October	137	421	577	1,135
November	215	463	640	1,318
December	145	303	443	891
2007				
January	78	146	396	620
February	127	459	666	1,252
March	127	530	730	1,387
April	84	308	551	943
May	151	548	771	1,470
June	151	454	652	1,257
July	130	460	621	1,211
August	205	489	674	1,368
September	149	357	610	1,116
October	163	417	719	1,299
November	224	497	719	1,440
December	130	300	455	885
2008				
January	127	216	407	750
February	135	373	700	1,208
March	157	373	676	1,206
April	154	398	715	1,267
May	153	433	703	1,289
June	178	477	610	1,265
July	273	419	608	1,300
August	297	356	597	1,250
September	299	420	567	1,286
October	275	484	663	1,422
November	291	447	609	1,347
December	252	371	519	1,142

Table A-24: Admissions from wait lists by urgency category: WACHS public hospitals, January 2009 - September 2009

	Urgency category			Total
	1	2	3	
2009				
January	203	365	390	958
February	220	513	574	1,307
March	285	501	603	1,389
April	300	449	552	1,301
May	291	463	584	1,338
June	272	427	684	1,383
July	268	452	666	1,386
August	302	354	655	1,311
September	295	449	657	1,401
October				
November				
December				
2010				
January				
February				
March				
April				
May				
June				
July				
August				
September				
October				
November				
December				

Elective Surgery Wait List Report, September 2009

Table A-25: Wait lists & median wait time (months) on public hospital wait lists by urgency category & surgical specialty at 30 September 2009

	Urgency	Cases on wait list			Median waiting time (months)		
		Metro	WACHS	Total	Metro	WACHS	Total
Cardiothoracic surgery	1	47	0	47	0.66	0.00	0.66
	2	19	0	19	1.12	0.00	1.12
	3	2	0	2	1.12	0.00	1.12
	<i>Sub total</i>	<i>68</i>	<i>0</i>	<i>68</i>	<i>0.76</i>	<i>0.00</i>	<i>0.76</i>
Ear, nose & throat	1	35	5	40	0.49	2.04	0.51
	2	659	53	712	1.32	1.38	1.32
	3	853	368	1,221	2.93	3.88	3.16
	<i>Sub total</i>	<i>1,547</i>	<i>426</i>	<i>1,973</i>	<i>2.07</i>	<i>3.53</i>	<i>2.33</i>
General surgery	1	111	82	193	0.26	0.46	0.30
	2	740	283	1,023	1.64	0.92	1.38
	3	955	380	1,335	3.12	1.38	2.60
	<i>Sub total</i>	<i>1,806</i>	<i>745</i>	<i>2,551</i>	<i>2.22</i>	<i>0.95</i>	<i>1.68</i>
Gynaecology	1	25	25	50	0.20	0.85	0.33
	2	210	69	279	0.89	0.79	0.85
	3	480	146	626	1.45	1.97	1.56
	<i>Sub total</i>	<i>715</i>	<i>240</i>	<i>955</i>	<i>1.18</i>	<i>1.41</i>	<i>1.22</i>
Neurosurgery	1	15	0	15	0.53	0.00	0.53
	2	121	0	121	2.83	0.00	2.83
	3	50	0	50	6.51	0.00	6.51
	<i>Sub total</i>	<i>186</i>	<i>0</i>	<i>186</i>	<i>3.02</i>	<i>0.00</i>	<i>3.02</i>
Ophthalmology	1	32	6	38	0.25	1.02	0.26
	2	436	122	558	1.59	0.92	1.32
	3	1,494	611	2,105	2.70	3.88	3.06
	<i>Sub total</i>	<i>1,962</i>	<i>739</i>	<i>2,701</i>	<i>2.14</i>	<i>3.02</i>	<i>2.47</i>
Orthopaedic surgery	1	44	11	55	0.39	0.26	0.39
	2	1,016	116	1,132	1.87	1.63	1.82
	3	1,218	517	1,735	3.32	4.11	3.52
	<i>Sub total</i>	<i>2,278</i>	<i>644</i>	<i>2,922</i>	<i>2.48</i>	<i>3.22</i>	<i>2.71</i>
Paediatric surgery	1	20	2	22	0.43	1.96	0.46
	2	132	0	132	1.84	0.00	1.84
	3	264	1	265	2.60	0.16	2.60
	<i>Sub total</i>	<i>416</i>	<i>3</i>	<i>419</i>	<i>2.07</i>	<i>0.46</i>	<i>2.07</i>
Plastic surgery	1	123	9	132	0.46	0.72	0.48
	2	316	9	325	2.32	1.38	2.27
	3	290	23	313	3.34	3.09	3.29
	<i>Sub total</i>	<i>729</i>	<i>41</i>	<i>770</i>	<i>2.10</i>	<i>2.07</i>	<i>2.10</i>
Urology	1	138	8	146	0.46	0.18	0.46
	2	395	21	416	1.35	0.30	1.25
	3	244	97	341	1.92	1.38	1.68
	<i>Sub total</i>	<i>777</i>	<i>126</i>	<i>903</i>	<i>1.18</i>	<i>1.18</i>	<i>1.18</i>

Note: Continued next page.

Elective Surgery Wait List Report, September 2009

Table A-25: Wait lists & median wait time (months) on public hospital wait lists by urgency category & surgical specialty at 30 September 2009 (continued)

	Urgency	Cases on wait list			Median waiting time (months)		
		Metro	WACHS	Total	Metro	WACHS	Total
Vascular surgery	1	24	0	24	0.82	0.00	0.82
	2	95	5	100	1.22	4.14	1.22
	3	118	0	118	5.79	0.00	5.79
	<i>Sub total</i>	237	5	242	2.37	4.14	2.38
Other specialty	1	148	10	158	0.46	0.26	0.46
	2	167	25	192	1.12	0.76	1.10
	3	358	48	406	1.18	1.07	1.18
	<i>Sub total</i>	673	83	756	0.89	0.66	0.85
All specialties	1	762	158	920	0.43	0.49	0.43
	2	4,306	703	5,009	1.58	0.99	1.41
	3	6,326	2,191	8,517	2.79	3.16	2.89
Total		11,394	3,052	14,446	1.91	2.07	1.94

Elective Surgery Wait List Report, September 2009

Table A-26: Half yearly cases & median wait time on public hospital lists at month ending, July 1999 - June 2009

	Metro		WACHS		State	
	n	Median wait time (months)	n	Median wait time (months)	n	Median wait time (months)
1999						
31 July	21,546	4.90	NA	NA	NA	NA
31 December	20,288	4.67	NA	NA	NA	NA
2000						
30 June	20,486	4.57	NA	NA	NA	NA
31 December	18,926	4.83	NA	NA	NA	NA
2001						
30 June	19,183	4.96	NA	NA	NA	NA
31 December	17,850	5.88	NA	NA	NA	NA
2002						
30 June	18,533	4.47	NA	NA	NA	NA
31 December	18,341	4.77	NA	NA	NA	NA
2003						
30 June	18,303	4.54	NA	NA	NA	NA
31 December	18,153	4.64	NA	NA	NA	NA
2004						
30 June	16,601	4.57	NA	NA	NA	NA
31 December	17,470	4.01	NA	NA	NA	NA
2005						
30 June	17,775	4.18	NA	NA	NA	NA
31 December	16,802	3.95	3,670	4.80	20,472	4.01
2006						
30 June	16,361	3.65	3,549	4.41	19,910	3.25
31 December	15,242	3.58	2,583	2.93	17,825	3.52
2007						
30 June	13,037	2.83	2,546	2.24	15,583	2.70
31 December	12,241	2.63	2,700	2.47	14,941	2.63
2008						
30 June	11,997	2.47	3,135	2.79	15,132	2.50
31 December	10,740	2.04	2,636	2.37	13,376	2.07
2009						
30 June	11,633	2.04	2,908	1.81	14,541	2.01
31 December						

Notes

Data extraction date

All data in this report is as at the end of the last day of each reported month.

Data revision

The most recent edition of reports should be consulted in case previously published data has been revised. Revisions can be due to updates to procedure codes, lags in data processing or other types of errors detected after publication.

Data source

Wait list extract data in ESWL reports is from the HCARE (Health Care and Related Information System), TOPAS (The Open Patient Administration System) and Joondalup and Peel data systems.

Data definitions

Data in ESWL reports is based on Australian Institute of Health and Welfare (AIHW) reporting guidelines.

Metropolitan public hospitals

The term 'metropolitan public hospital' refers to the following public hospitals - Armadale-Kelmscott Hospital, Bentley Hospital, Fremantle Hospital, Joondalup Health Campus, Kalamunda Hospital, Kaleeya Hospital, King Edward Memorial Hospital, Osborne Park Hospital, Peel Health Campus, Princess Margaret Hospital, Rockingham General Hospital, Royal Perth Hospital, Royal Perth Rehabilitation Hospital, Sir Charles Gairdner Hospital and Swan District Hospital.

Specialty

Specialty is "The area of clinical expertise held by the doctor who will perform the elective surgery". (Source: Australian Hospital Statistics, AIHW.)

Indicator procedure

"An indicator procedure is a procedure which is of high volume and is often associated with long waiting periods. Elective surgery waiting time statistics for indicator procedures give a specific indication of waiting time for these particular areas of elective care provision." (Source: Australian Hospital Statistics, AIHW.)

Cases on the waiting list

Cases on the ESWLs represent the number of people waiting. They are called cases (rather than people) because a person may be on the waiting list more than once. For example, if a person is

on the waiting list twice for two different procedures, then they will be counted as two cases.

Within boundary cases

A patient who has been waiting less than the recommended period in one of the three clinical urgency categories is defined as being within boundary. The clinical urgency categories prioritise patients from least urgent (Category 3) to most urgent (Category 1).

Category 1

Admission within 30 days is desirable for a condition that has the potential to deteriorate quickly to the point that it might become an emergency.

Category 2

Admission within 90 days is desirable for a condition causing pain, dysfunction or disability, which is not likely to deteriorate quickly or become an emergency.

Category 3

Admission at some time in the future is acceptable for a condition causing minimal or no pain, dysfunction or disability, which is unlikely to deteriorate quickly and does not have the potential to become an emergency.

For the purpose of identifying Category 3 patients who are waiting within or over boundary, WA has adopted the AIHW specified boundary used to define an 'extended wait,' ie patients waiting more than 365 days.

Cases admitted from the waiting list

Cases admitted from the waiting list are people admitted from the waiting list to hospital to have their surgery. They are called cases (rather than people) because a person may have been admitted for surgery on more than one occasion. For example, if a person was admitted twice during the reporting period, then they will be counted as two cases.

Other removals from the waiting list

Patients can be removed from the waiting list for a variety of reasons, other than admission to hospital for surgery. Removal reasons include that the procedure was no longer required (eg patient had their procedure in a private hospital), the patient was non-contactable (eg as part of audit procedures to check whether the patient still required their surgery), or that the database entry was incorrect (eg a duplicate case).