



WA Country Health Service Elective Surgery Wait List Report: June 2009

© Department of Health, Western Australia

This work is copyright. Apart from any use as permitted under the *Copyright Act 1968*, no part may be reproduced without prior written permission from the Department of Health, Western Australia.

Requests and enquiries concerning reproduction and rights should be directed to -

Performance Reporting Branch
Information Management & Reporting Directorate
Department of Health, Western Australia
PO Box 8172 Perth Business Centre
Western Australia 6849

A list of the Department's publications concerning elective surgery is available from -

www.health.wa.gov.au/ElectiveSurgery/waitinglist/

ISSN 1836-165X (online)

ISSN 1836-1641 (print)

Suggested citation

Department of Health, Western Australia
WA Country Health Service Elective Surgery Wait List Report: June 2009.
Perth: Performance Reporting Branch, Information Management & Reporting Directorate,
Department of Health, 2009.

Report produced by
Information Management & Reporting Directorate, Health Information Network
Department of Health

Copies of this publication available at:

www.health.wa.gov.au/ElectiveSurgery/waitinglist/

Table of Contents

Key Points	i
Abbreviations	ii
Glossary	ii
Symbols	ii
List of Tables	iii
List of Figures	iii
1. On Wait List	
1.1 Number of cases	1
1.2 Waiting times	1
2. Admissions	
2.1 Number of cases	1
2.2 Waiting times	2
3. Time on Wait List	
3.1 Category 1 cases	3
3.2 Category 2 cases	4
3.3 Category 3 cases: longer than 365 days	4
3.4 Category 3 cases: less than or equal to 180 days	5
Appendices	A-1
Notes	A-5

Key Points

On elective surgery wait list

At the end of the month, there was a total of 2,908 cases on WA Country Health Service (WACHS) public hospital wait lists. The median wait time for these cases was 55 days.

Of the 2,908 cases, 2,731 (93.9%) were within boundary.

Admissions

There was a total of 1,383 admissions from WACHS public hospital wait lists in this month. The median wait time for these admissions was 25 days.

Of the 1,383 admissions, 1,283 (92.8%) were within boundary.

Abbreviations

AHS	Area Health Service
AIHW	Australian Institute of Health and Welfare
CAHS	Child and Adolescent Health Service
DNA	Did not attend
FH	Fremantle Hospital
JHC	Joondalup Health Campus
KEMH	King Edward Memorial Hospital
NA	Not available
NMAHS	North Metropolitan Area Health Service Includes: <i>Kalamunda Hospital, King Edward Memorial Hospital, Osborne Park Hospital, Sir Charles Gairdner Hospital and Swan District Hospital.</i>
PHC	Peel Health Campus
PMH	Princess Margaret Hospital for Children
qtr	Quarter
RPH	Royal Perth Hospital
RPH SPC	Royal Perth Hospital Shenton Park Campus (also known as RPH Rehabilitation Hospital)
SCGH	Sir Charles Gairdner Hospital
SMAHS	South Metropolitan Area Health Service Includes: <i>Armadale-Kelmscott Memorial Hospital, Bentley Hospital, Fremantle Hospital, Kaleeya Hospital, Rockingham General Hospital, Royal Perth Hospital and Royal Perth Rehabilitation Hospital.</i>
TOPAS	The Open Patient Administration System
WA	Western Australia
WACHS	Western Australian Country Health Service

Glossary

Mean: This refers to the arithmetic mean, being the sum of all values in the list divided by the number of items in the list. The mean is the most commonly-used type of average and can also be referred to simply as the average.

Median: This refers to the value separating the higher half of a sample, a population, or a probability distribution, from the lower half. This statistic is used, in preference to the mean, when the distribution of the values is skewed by a small number of very high values.

90th percentile: This refers to the value in the list below which there are 90 percent of numbers and which enables waiting times to be expressed as a percentile rank.

However, as percentile ranks are not on equal interval scales, the difference between any two scores is not the same between any other two scores. For instance, the difference of 25 between percentile ranks of 90 and 65 is not the same as the difference of 25 between 50 and 25 as the position rank of a percentile is based on an assumed normal distribution of all values.

Symbols

- nil

List of Tables

Table 1:	Cases on wait lists at 30 June 2008, 31 May 2009 & 30 June 2009	1
Table 2:	Admissions from wait lists for June 2008, May 2009 & June 2009	2
Table A-1:	Monthly breakdown of number of cases on wait lists & admissions from wait lists, July 2006 - June 2009	A-1
Table A-2:	Monthly cases on wait lists by duration, July 2006 - June 2009.....	A-2
Table A-3:	Monthly Category 1 cases on wait lists by duration, July 2006 - June 2009.....	A-3
Table A-4:	Monthly Category 2 cases on wait lists by duration, July 2006 - June 2009.....	A-3
Table A-5:	Monthly Category 3 cases on wait lists by duration, July 2006 - June 2009.....	A-4

List of Figures

Figure 1:	Cases on wait lists, January 2007 to June 2009	1
Figure 2:	Median waiting time (months) of cases on wait lists, January 2007 to June 2009.....	2
Figure 3:	Admissions from wait lists, January 2007 - June 2009.....	3
Figure 4:	Median wait times of cases admitted, January 2007 - June 2009	3
Figure 5:	Category 1 cases & proportion (%) of cases within boundary on wait lists, January 2007 - June 2009	4
Figure 6:	Category 1 cases waiting over boundary on wait lists, January 2007 - June 2009	4
Figure 7:	Category 2 cases & proportion (%) of cases within boundary on wait lists, January 2007 - June 2009	5
Figure 8:	Category 2 cases waiting over boundary on wait lists, January 2007 - June 2009	5
Figure 9:	Category 3 cases & proportion (%) of cases within boundary on wait lists, January 2007 - June 2009	6
Figure 10:	Category 3 cases waiting over boundary on wait lists, January 2007 - June 2009	6
Figure 11:	Category 3 cases & proportion (%) of cases waiting 180 days or less on wait lists, January 2007 - June 2009	7
Figure 12:	Category 3 cases waiting more than 180 days on wait lists, January 2007 - June 2009	7

1. On Wait List

1.1 Number of cases

Table 1 compares the total number of cases on WACHS public hospital wait lists for the current reporting month to the previous month and to the same month last year.

This table shows there was a total of 2,908 cases on these wait lists at 30 June 2009 - an increase of 71 compared to the previous month and a decrease of 227 compared to the same month last year. (For longer term monthly trends see Table A-1, page A-1.)

See Figure 1 for an overview of trends in the number of cases at the end of the month from January 2007 up to the present.

1.2 Waiting times

Table 1 compares the median and 90th percentile waiting time of cases on WACHS public hospital wait lists for the current reporting month to the previous month and to the same month last year.

This table shows that the median wait time at the end of June 2009 was 1.81 months - a decrease of 11 days compared to the previous month (2.17 months) and a decrease of 30 days compared to the same month last year (2.79 months). (For longer term monthly trends see Table A-1, page A-1.)

See Figure 2 (page 2) for an overview of trends in median wait time at the end of the month since January 2007 up to the present.

Admissions

2.1 Number of cases

Table 2 (page 2) compares the number of cases admitted from WACHS public hospital wait lists for the current reporting month to the previous month and to the same month last year.

Table 2 (page 2) shows that the number of admissions from the wait list in June 2009 was 1,383.

Table 1: Cases on wait lists at 30 June 2008, 31 May 2009 & 30 June 2009

	Total	Waiting time			
		Median		90th percentile	
		Days	Months	Days	Months
30 June 2008	3,135	85	2.79	284	9.34
31 May 2009	2,837	66	2.17	273	8.98
30 June 2009	2,908	55	1.81	268	8.81

Figure 1: Cases on wait lists, January 2007 to June 2009

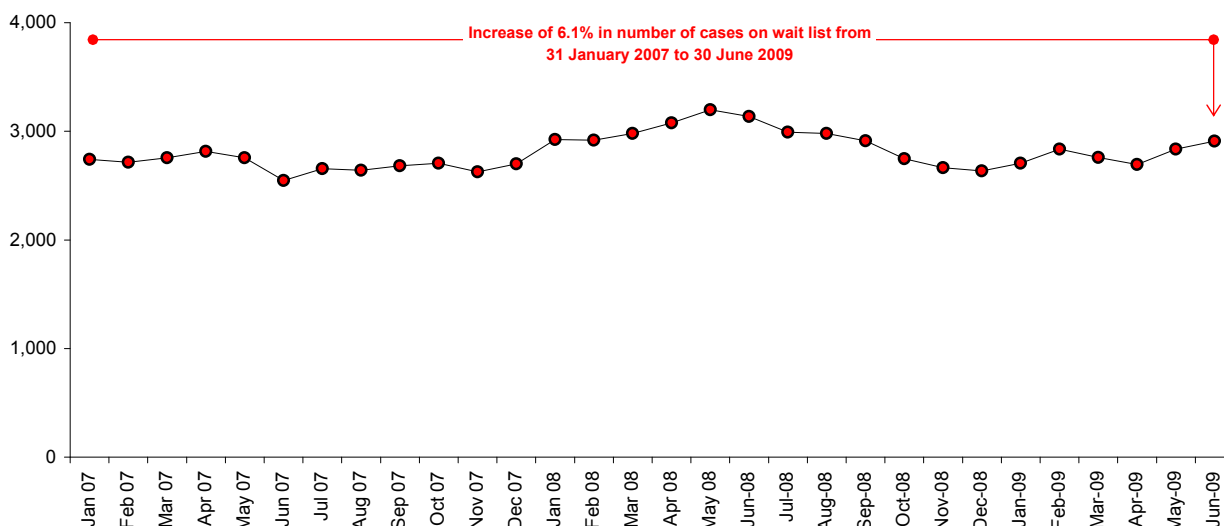
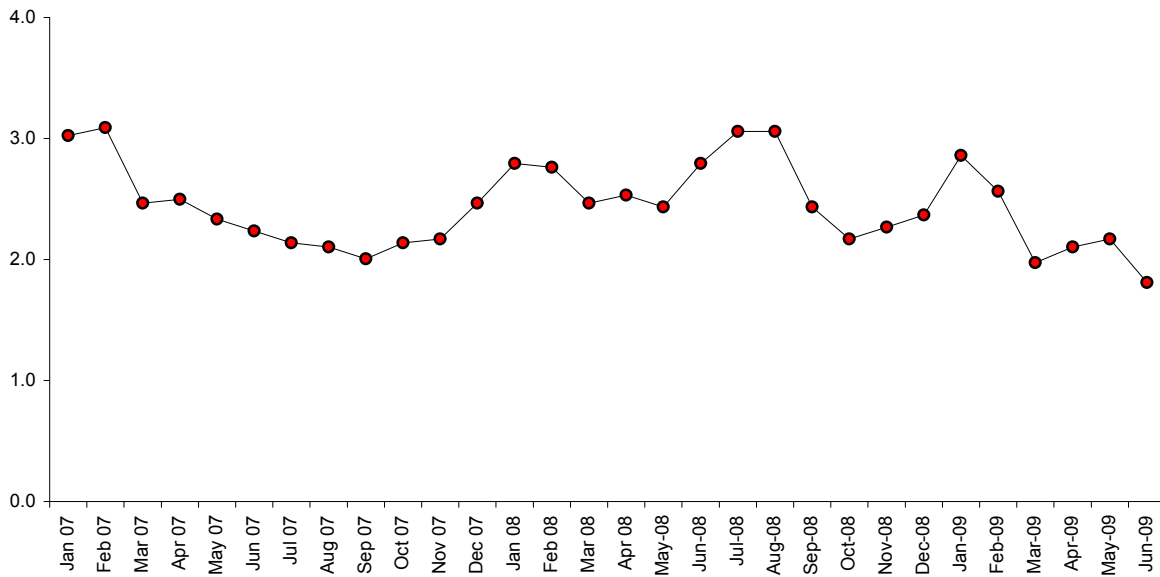


Figure 2: Median waiting time (months) of cases on wait lists, January 2007 to June 2009



This was 45 more than the previous month (1,338 admissions) and 118 more than the same month last year (1,265 admissions). (For longer term monthly trends, see Table A-1, page A-1.)

Figure 3 (page 3) provides an overview of trends in the number of monthly cases admitted for surgery from January 2007 up to the present.

It can be seen that, overall, the number of admissions fluctuate within a relatively well defined range, with the exception of short term reductions that occurred in April 2007 and the holiday periods in December and January 2007, 2008 and 2009.

2.2 Waiting times

Table 2 compares the median and 90th percentile waiting time for cases admitted from WACHS public hospital wait lists in the current reporting month to the previous month and to the same month last year.

Table 2 shows an increase of 1 day in median wait time from the previous month (0.79 months) and 8 days compared to the same month last year (0.56 months).

Figure 4 (page 3) provides an overview of trends in median wait times of admissions from January 2007 up to the present.

Table 2: Admissions from wait lists in June 2008, May 2009 & June 2009

	Total	Waiting time			
		Median		90th percentile	
		Days	Months	Days	Months
June 2008	1,265	17	0.56	118	3.88
May 2009	1,338	24	0.79	125	4.11
June 2009	1,383	25	0.82	145	4.77

3. Time on Wait List

Table A-2 (page A-2) shows the number of cases each month on WACHS public hospital wait lists by duration of time on the list.

This table shows that as at 30 June 2009, of the 2,908 cases on wait lists, 55 (1.9%) had been waiting more than 365 days, and of these, 48 had been waiting between 366 and 500 days and 7 had been waiting for longer than 500 days.

This means that 98.1% of all cases on WACHS public hospital wait lists had been on the lists for 365 days or less.

3.1 Category 1 cases

As at 30 June 2009, the proportion of Category 1 cases waiting within boundary (ie admission desirable within 30 days) was 75.9% (Table A-3, page A-3).

Figures 5 and 6 (page 4) show trends in the number of Category 1 cases, the proportion of cases within boundary and the number of cases over boundary for the period from January 2007 up to the present.

Figure 3: Admissions from wait lists, January 2007 - June 2009

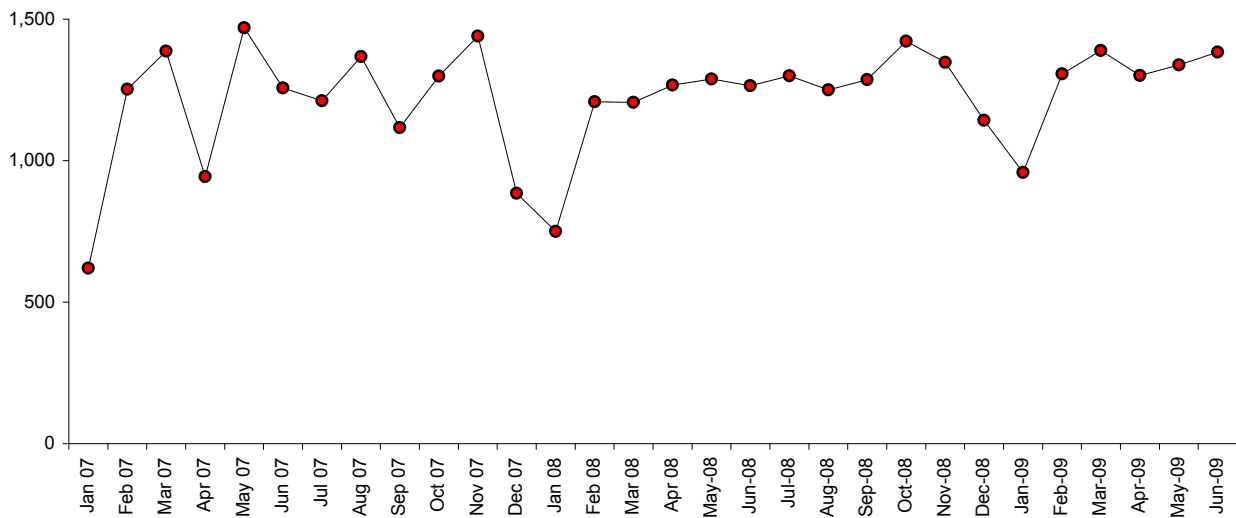
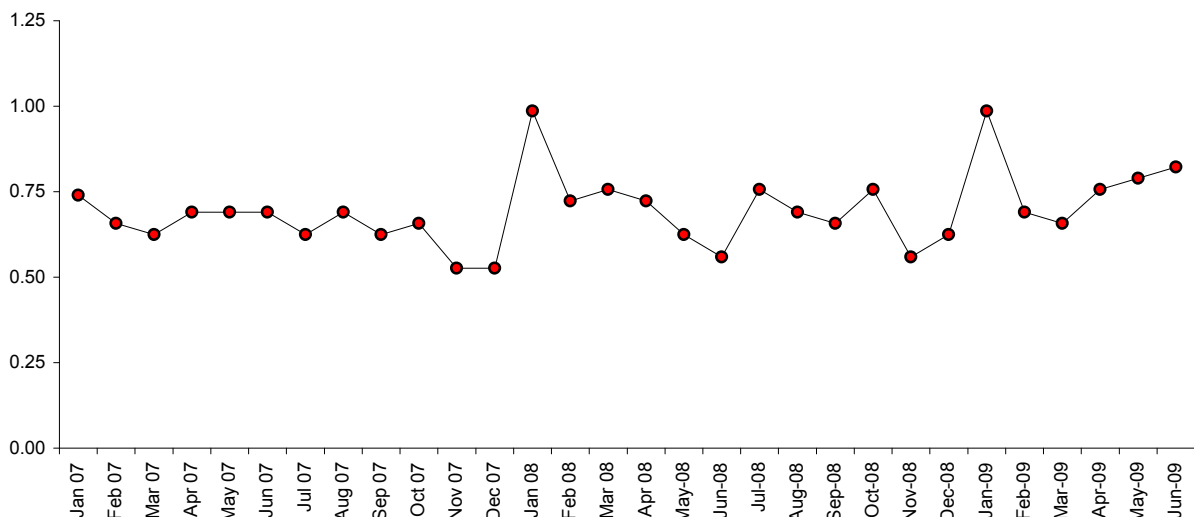


Figure 4: Median wait times of cases admitted, January 2007 - June 2009



3.2 Category 2 cases

As at 30 June 2009, the proportion of Category 2 cases waiting within boundary (ie admission desirable within 90 days) was 84.9% (Table A-4, page A-3).

Figures 7 and 8 (page 5) show trends in the number of Category 2 cases, the proportion of cases within boundary and the number of cases over boundary for the period from January 2007 up to the present.

3.3 Category 3 cases: longer than 365 days

As at 30 June 2009, the proportion of Category 3 cases waiting within boundary (ie admission desirable within 365 days) was 97.6% (Table A-5, page A-4).

Table A-5 also shows that there has been a marked decline in the number of cases out-

Figure 5: Category 1 cases & proportion (%) of cases within boundary on wait lists, January 2007 - June 2009

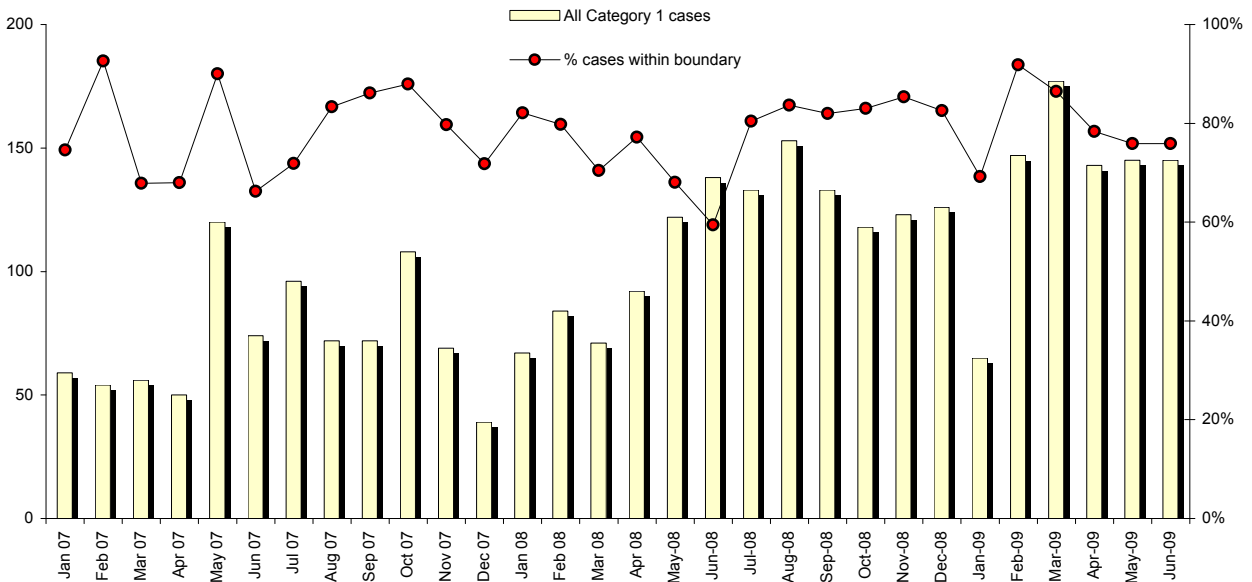
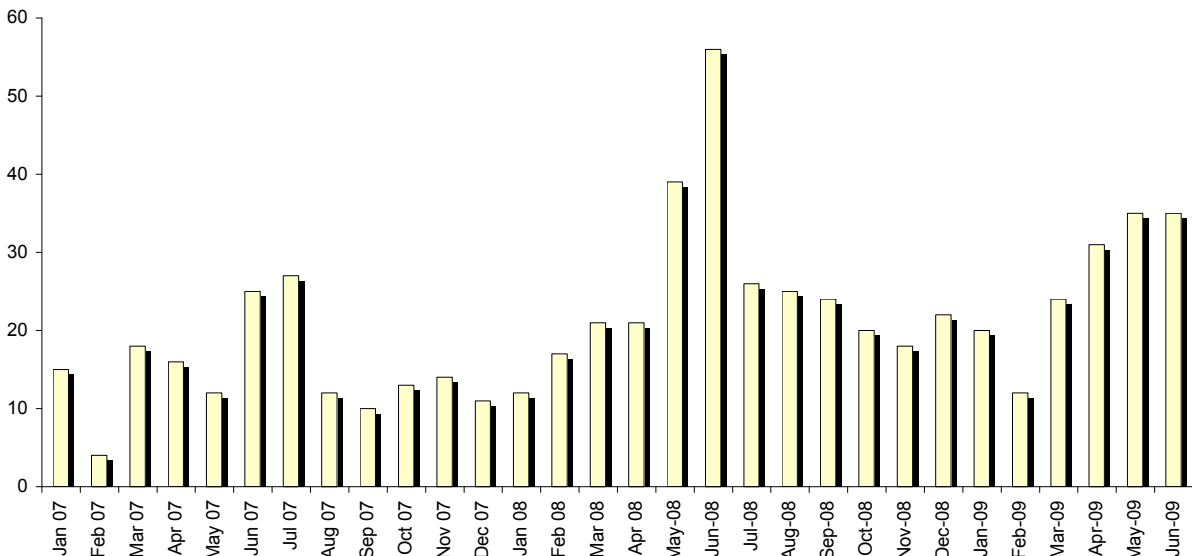


Figure 6: Category 1 cases waiting over boundary on wait lists, January 2007 - June 2009



side the boundary from July 2006 (543 cases) up to the present.

Figures 9 and 10 (page 6) show trends in the number of Category 3 cases, the proportion of cases within boundary and the number of cases over boundary for the period from January 2007 up to the present.

3.4 Category 3 cases: less than or equal to 180 days

As at 30 June 2009, the proportion of Category 3 cases waiting 180 days or less was 71.5% (Table A-5, page A-4).

Table A-5 also shows that over the period the proportion of cases per month waiting 180

Figure 7: Category 2 cases & proportion (%) of cases within boundary on wait lists, January 2007 - June 2009

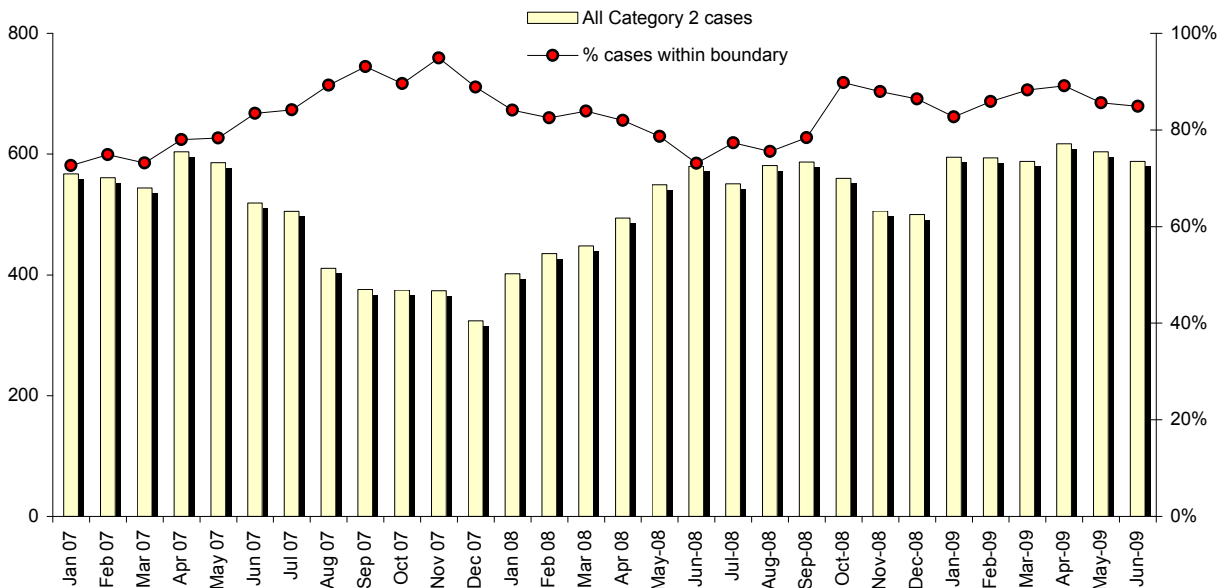
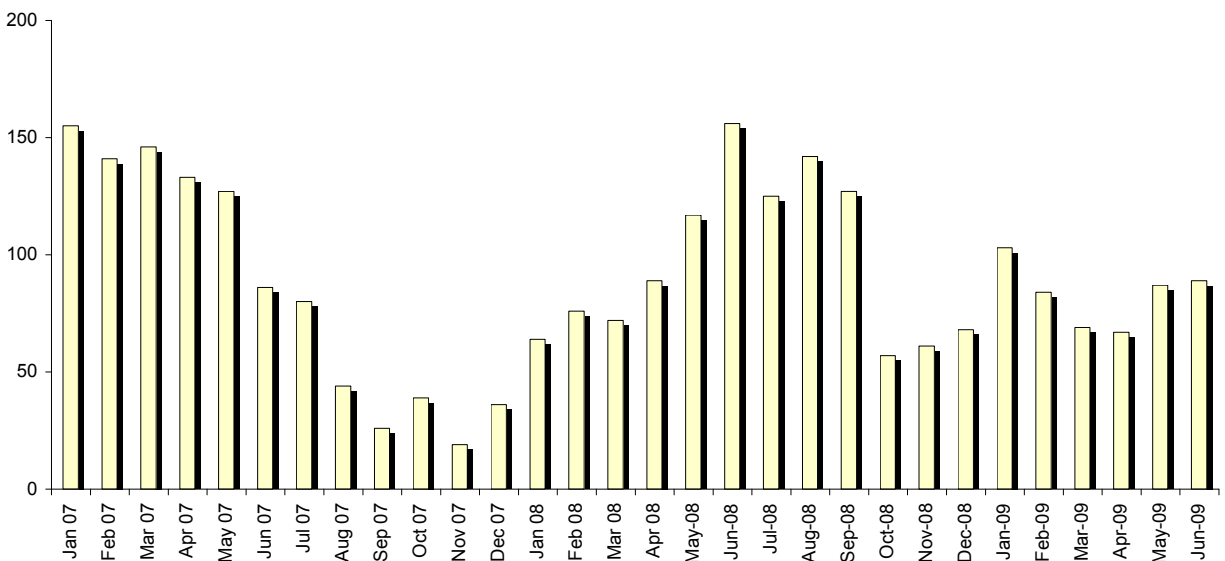


Figure 8: Category 2 cases waiting over boundary on wait lists, January 2007 - June 2009



WACHS Elective Surgery Wait List Report, June 2009

days or less increased from July 2006 (56.1%) up to November 2007 (77.8%) and has since decreased slightly up to the present.

tion of cases waiting 180 days or less and the number of cases waiting more than 180 days since January 2007 up to the present.

Figures 11 and 12 (page 7) show trends in the number of Category 3 cases, the propor-

Figure 9: Category 3 cases & proportion (%) of cases within boundary on wait lists, January 2007 - June 2009

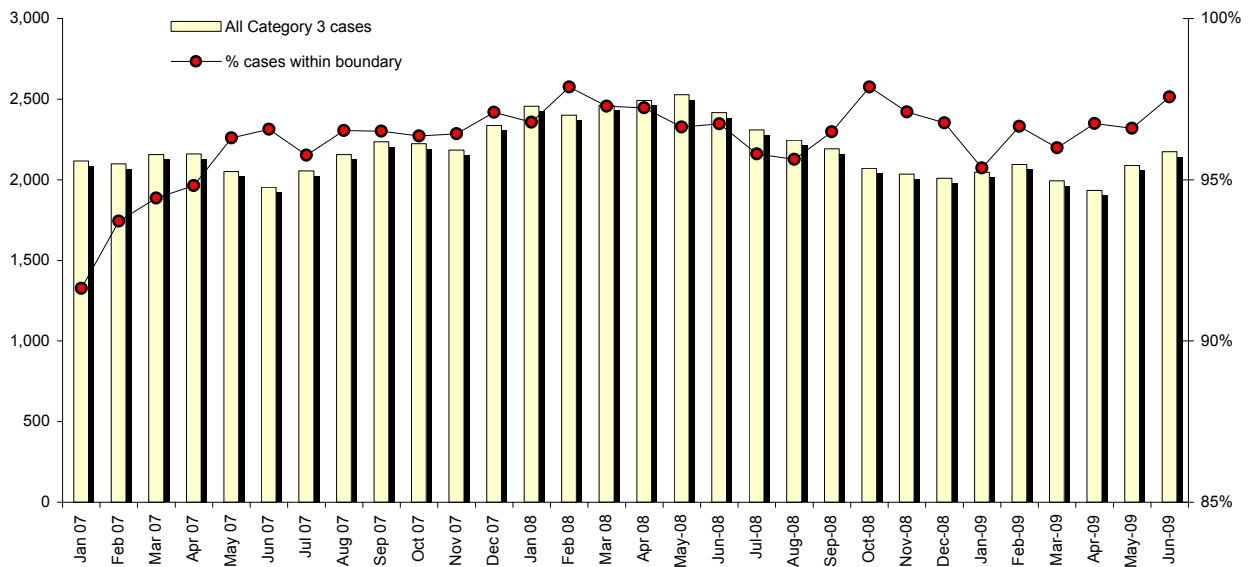
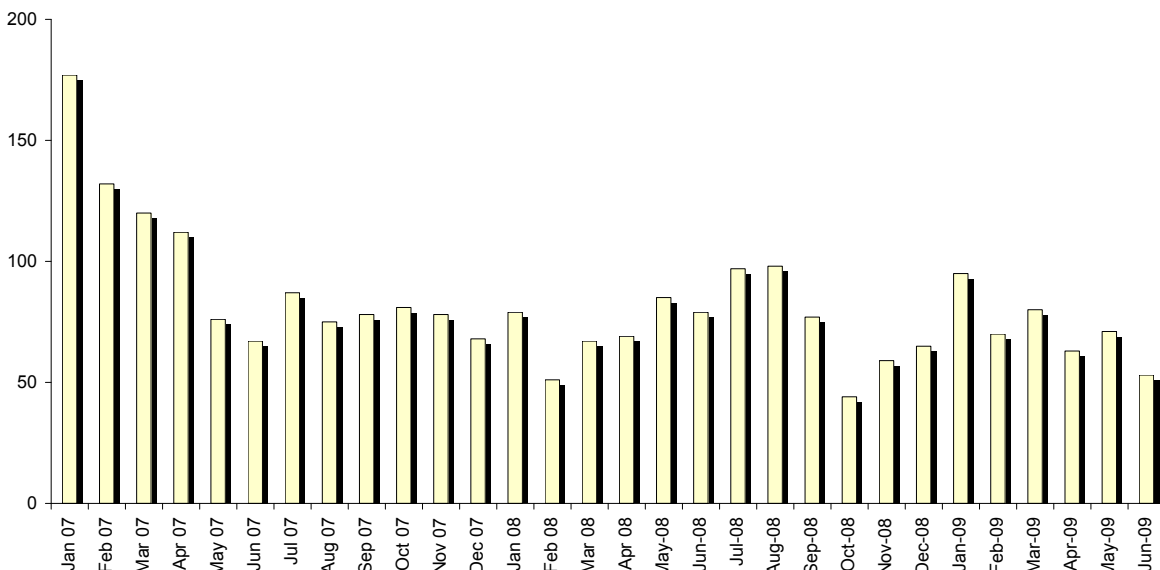


Figure 10: Category 3 cases waiting over boundary on wait lists, January 2007 - June 2009



WACHS Elective Surgery Wait List Report, June 2009

Figure 11: Category 3 cases & proportion (%) of cases waiting 180 days or less on wait lists, January 2007 - June 2009

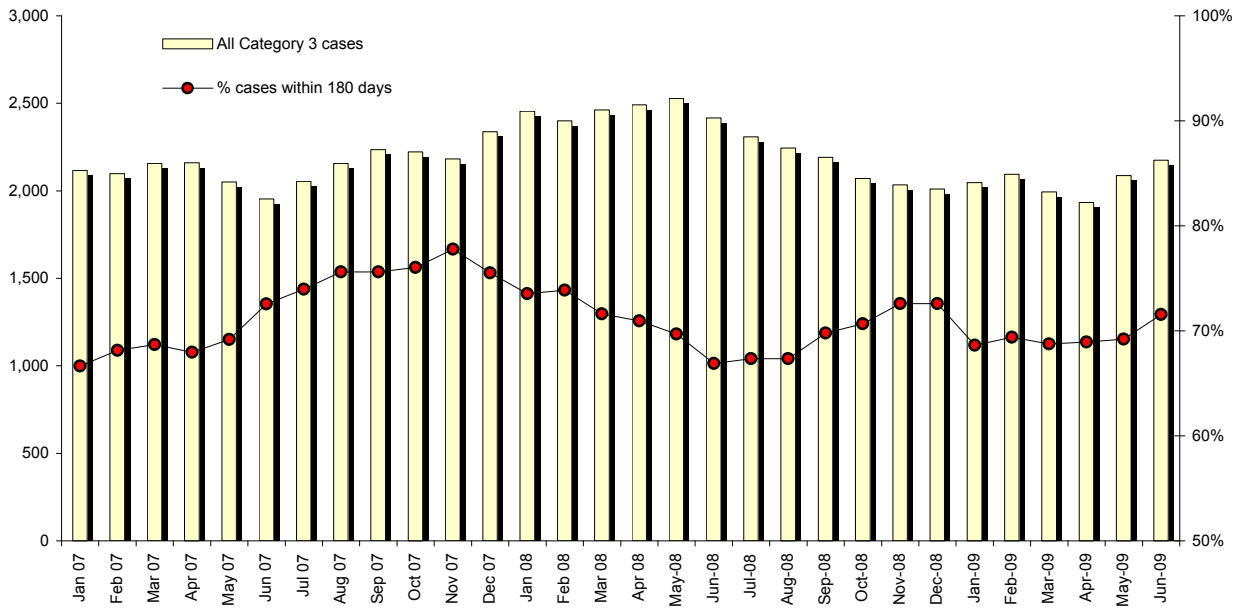
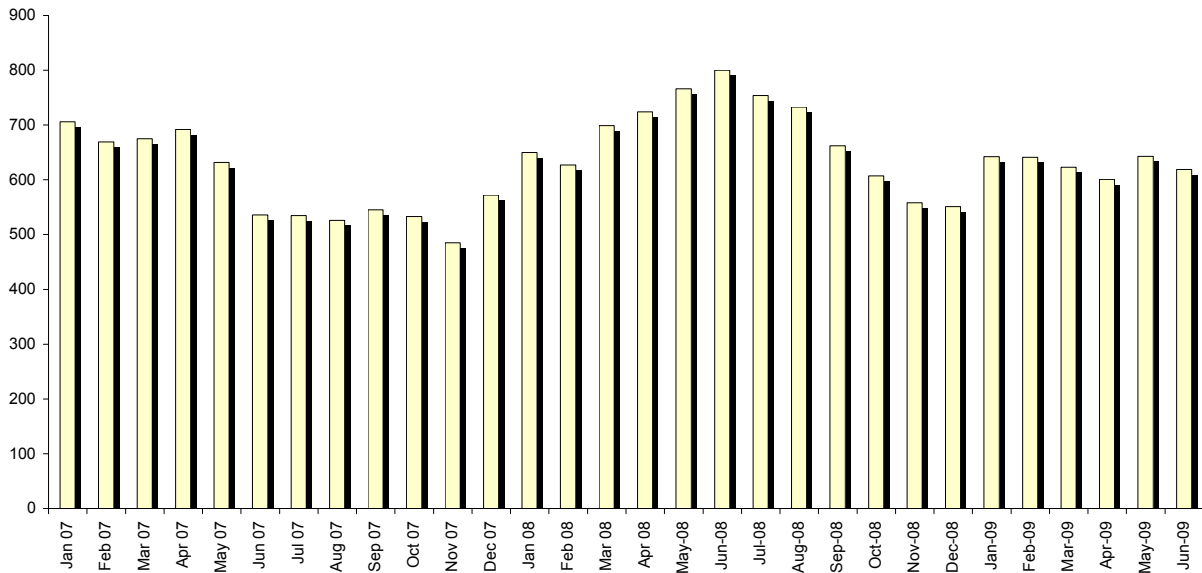


Figure 12: Category 3 cases waiting more than 180 days on wait lists, January 2007 - June 2009



Appendices

Table A-1: Monthly breakdown of number of cases on wait lists & admissions from wait lists, July 2006 - June 2009

	Cases on wait lists at end of month						Admissions from wait lists in month					
	Total	Within bound-ary	Waiting time				Total	Within bound-ary	Waiting time			
			Median		90th percentile				Median		90th percentile	
			Days	Mths	Days	Mths			Days	Mths	Days	Mths
2006												
July	3,539	2,379	131	4.31	629	20.68	1,116	1,047	20	0.64	128	4.21
August	3,500	2,299	126	4.14	631	20.75	1,268	1,181	17	0.56	135	4.44
September	3,477	2,355	117	3.85	596	19.58	1,192	1,130	19	0.61	108	3.55
October	3,379	2,297	117	3.85	615	20.22	1,135	1,061	21	0.69	118	3.88
November	3,128	2,225	107	3.52	541	17.79	1,318	1,221	19	0.62	114	3.75
December	2,583	2,148	89	2.93	333	10.95	891	846	17	0.56	109	3.57
2007												
January	2,742	2,395	92	3.02	323	10.62	620	573	23	0.74	151	4.96
February	2,714	2,437	94	3.09	301	9.90	1,252	1,177	20	0.66	131	4.29
March	2,756	2,472	75	2.47	305	10.03	1,387	1,298	19	0.62	133	4.36
April	2,814	2,553	76	2.50	299	9.81	943	896	21	0.69	138	4.52
May	2,756	2,541	71	2.33	282	9.27	1,470	1,408	21	0.69	144	4.73
June	2,546	2,368	68	2.24	275	9.04	1,257	1,200	21	0.69	120	3.95
July	2,655	2,461	65	2.14	275	9.04	1,211	1,171	19	0.62	118	3.88
August	2,640	2,509	64	2.10	283	9.30	1,368	1,315	21	0.69	112	3.68
September	2,683	2,569	61	2.01	283	9.30	1,116	1,082	19	0.62	127	4.18
October	2,706	2,573	65	2.14	266	8.75	1,299	1,256	20	0.66	119	3.91
November	2,626	2,515	66	2.17	246	8.09	1,440	1,399	16	0.53	99	3.25
December	2,700	2,585	75	2.47	257	8.45	885	861	16	0.53	86	2.83
2008												
January	2,924	2,769	85	2.79	267	8.78	750	721	30	0.99	134	4.41
February	2,919	2,775	84	2.76	254	8.35	1,208	1,139	22	0.72	154	5.06
March	2,981	2,821	75	2.47	268	8.81	1,206	1,137	23	0.76	130	4.27
April	3,078	2,899	77	2.53	272	8.94	1,267	1,217	22	0.72	139	4.57
May	3,199	2,958	74	2.43	271	8.91	1,289	1,245	19	0.62	122	4.01
June	3,135	2,844	85	2.79	284	9.34	1,265	1,208	17	0.56	118	3.88
July	2,993	2,745	93	3.06	296	9.73	1,300	1,222	23	0.76	174	5.72
August	2,979	2,714	93	3.06	299	9.83	1,250	1,177	21	0.69	162	5.33
September	2,911	2,683	74	2.43	294	9.67	1,286	1,214	20	0.66	188	6.18
October	2,748	2,627	66	2.17	267	8.78	1,422	1,339	23	0.76	180	5.92
November	2,664	2,526	69	2.27	257	8.45	1,347	1,280	17	0.56	167	5.49
December	2,636	2,481	72	2.37	270	8.88	1,142	1,081	19	0.62	140	4.59
2009												
January	2,707	2,489	87	2.86	297	9.76	958	882	30	0.99	111	3.65
February	2,836	2,670	78	2.56	283	9.30	1,307	1,252	21	0.69	145	4.75
March	2,759	2,586	60	1.97	274	9.01	1,389	1,322	20	0.66	151	4.96
April	2,694	2,533	64	2.10	267	8.78	1,301	1,240	23	0.76	149	4.90
May	2,837	2,664	66	2.17	273	8.98	1,338	1,265	24	0.79	125	4.11
June	2,908	2,731	55	1.81	268	8.81	1,383	1,283	25	0.82	145	4.77

WACHS Elective Surgery Wait List Report, June 2009

Table A-2: Monthly cases on wait lists by duration, July 2006 - June 2009

	Within 365 days		366 – 500 days		More than 500 days		More than 365 days		Total
	n	%	n	%	n	%	n	%	
2006									
July	2,811	79.4	223	6.3	505	14.3	728	20.6	3,539
August	2,763	78.9	253	7.2	484	13.8	737	21.1	3,500
September	2,755	79.2	262	7.5	460	13.2	722	20.8	3,477
October	2,705	80.1	216	6.4	458	13.6	674	19.9	3,379
November	2,588	82.7	189	6.0	351	11.2	540	17.3	3,128
December	2,390	92.5	156	6.0	37	1.4	193	7.5	2,583
2007									
January	2,558	93.3	153	5.6	31	1.1	184	6.7	2,742
February	2,575	94.9	122	4.5	17	0.6	139	5.1	2,714
March	2,628	95.4	113	4.1	15	0.5	128	4.6	2,756
April	2,690	95.6	108	3.8	16	0.6	124	4.4	2,814
May	2,663	96.6	84	3.0	9	0.3	93	3.4	2,756
June	2,474	97.2	65	2.6	7	0.3	72	2.8	2,546
July	2,564	96.6	77	2.9	14	0.5	91	3.4	2,655
August	2,563	97.1	63	2.4	14	0.5	77	2.9	2,640
September	2,603	97.0	59	2.2	21	0.8	80	3.0	2,683
October	2,625	97.0	54	2.0	27	1.0	81	3.0	2,706
November	2,548	97.0	61	2.3	17	0.6	78	3.0	2,626
December	2,632	97.5	47	1.7	21	0.8	68	2.5	2,700
2008									
January	2,845	97.3	53	1.8	26	0.9	79	2.7	2,924
February	2,868	98.3	42	1.4	9	0.3	51	1.7	2,919
March	2,913	97.7	63	2.1	5	0.2	68	2.3	2,981
April	3,009	97.8	60	1.9	9	0.3	69	2.2	3,078
May	3,113	97.3	76	2.4	10	0.3	86	2.7	3,199
June	3,053	97.4	77	2.5	5	0.2	82	2.6	3,135
July	2,892	96.6	88	2.9	13	0.4	101	3.4	2,993
August	2,873	96.4	86	2.9	20	0.7	106	3.6	2,979
September	2,830	97.2	66	2.3	15	0.5	81	2.8	2,911
October	2,702	98.3	31	1.1	15	0.5	46	1.7	2,748
November	2,605	97.8	54	2.0	5	0.2	59	2.2	2,664
December	2,569	97.5	62	2.4	5	0.2	67	2.5	2,636
2009									
January	2,610	96.4	87	3.2	10	0.4	97	3.6	2,707
February	2,764	97.5	61	2.2	11	0.4	72	2.5	2,836
March	2,679	97.1	77	2.8	3	0.1	80	2.9	2,759
April	2,629	97.6	58	2.2	7	0.3	65	2.4	2,694
May	2,765	97.5	63	2.2	9	0.3	72	2.5	2,837
June	2,853	98.1	48	1.7	7	0.2	55	1.9	2,908

WACHS Elective Surgery Wait List Report, June 2009

Table A-3: Monthly Category 1 cases on wait lists by duration, July 2006 - June 2009

	Within 30 days		More than 30 days	Total
	n	%	n	
2006				
July	122	56.0	96	218
August	103	48.6	109	212
September	75	41.7	105	180
October	96	47.8	105	201
November	106	56.7	81	187
December	39	90.7	4	43
2007				
January	44	74.6	15	59
February	50	92.6	4	54
March	38	67.9	18	56
April	34	68.0	16	50
May	108	90.0	12	120
June	49	66.2	25	74
July	69	71.9	27	96
August	60	83.3	12	72
September	62	86.1	10	72
October	95	88.0	13	108
November	55	79.7	14	69
December	28	71.8	11	39
2008				
January	55	82.1	12	67
February	67	79.8	17	84
March	50	70.4	21	71
April	71	77.2	21	92
May	83	68.0	39	122
June	82	59.4	56	138
July	107	80.5	26	133
August	128	83.7	25	153
September	109	82.0	24	133
October	98	83.1	20	118
November	105	85.4	18	123
December	104	82.5	22	126
2009				
January	45	69.2	20	65
February	135	91.8	12	147
March	153	86.4	24	177
April	112	78.3	31	143
May	110	75.9	35	145
June	110	75.9	35	145

Table A-4: Monthly Category 2 cases on wait lists by duration, July 2006 - June 2009

	Within 90 days		More than 90 days	Total
	n	%	n	
2006				
July	468	47.3	521	989
August	432	43.9	552	984
September	462	48.5	491	953
October	418	46.8	476	894
November	375	48.0	407	782
December	352	56.1	276	628
2007				
January	412	72.7	155	567
February	420	74.9	141	561
March	398	73.2	146	544
April	471	78.0	133	604
May	459	78.3	127	586
June	433	83.4	86	519
July	425	84.2	80	505
August	367	89.3	44	411
September	350	93.1	26	376
October	336	89.6	39	375
November	355	94.9	19	374
December	288	88.9	36	324
2008				
January	338	84.1	64	402
February	359	82.5	76	435
March	376	83.9	72	448
April	405	82.0	89	494
May	432	78.7	117	549
June	424	73.1	156	580
July	426	77.3	125	551
August	439	75.6	142	581
September	460	78.4	127	587
October	503	89.8	57	560
November	445	87.9	61	506
December	432	86.4	68	500
2009				
January	492	82.7	103	595
February	510	85.9	84	594
March	519	88.3	69	588
April	550	89.1	67	617
May	517	85.6	87	604
June	499	84.9	89	588

WACHS Elective Surgery Wait List Report, June 2009

Table A-5: Monthly Category 3 cases on wait lists by duration, July 2006 - June 2009

	180 days				365 days				Total
	Within 180 days		More than 180 days		Within 365 days		More than 365 days		
	n	%	n	%	n	%	n	%	
2006									
July	1,309	56.1	1,023	43.9	1,789	76.7	543	23.3	2,332
August	1,291	56.0	1,013	44.0	1,764	76.6	540	23.4	2,304
September	1,368	58.4	976	41.6	1,818	77.6	526	22.4	2,344
October	1,358	59.5	926	40.5	1,783	78.1	501	21.9	2,284
November	1,320	61.1	839	38.9	1,744	80.8	415	19.2	2,159
December	1,331	69.6	581	30.4	1,757	91.9	155	8.1	1,912
2007									
January	1,410	66.6	706	33.4	1,939	91.6	177	8.4	2,116
February	1,430	68.1	669	31.9	1,967	93.7	132	6.3	2,099
March	1,481	68.7	675	31.3	2,036	94.4	120	5.6	2,156
April	1,468	68.0	692	32.0	2,048	94.8	112	5.2	2,160
May	1,418	69.2	632	30.8	1,974	96.3	76	3.7	2,050
June	1,417	72.6	536	27.4	1,886	96.6	67	3.4	1,953
July	1,519	74.0	535	26.0	1,967	95.8	87	4.2	2,054
August	1,631	75.6	526	24.4	2,082	96.5	75	3.5	2,157
September	1,690	75.6	545	24.4	2,157	96.5	78	3.5	2,235
October	1,690	76.0	533	24.0	2,142	96.4	81	3.6	2,223
November	1,698	77.8	485	22.2	2,105	96.4	78	3.6	2,183
December	1,765	75.5	572	24.5	2,269	97.1	68	2.9	2,337
2008									
January	1,805	73.5	650	26.5	2,376	96.8	79	3.2	2,455
February	1,773	73.9	627	26.1	2,349	97.9	51	2.1	2,400
March	1,763	71.6	699	28.4	2,395	97.3	67	2.7	2,462
April	1,768	70.9	724	29.1	2,423	97.2	69	2.8	2,492
May	1,762	69.7	766	30.3	2,443	96.6	85	3.4	2,528
June	1,617	66.9	800	33.1	2,338	96.7	79	3.3	2,417
July	1,555	67.3	754	32.7	2,212	95.8	97	4.2	2,309
August	1,512	67.3	733	32.7	2,147	95.6	98	4.4	2,245
September	1,529	69.8	662	30.2	2,114	96.5	77	3.5	2,191
October	1,463	70.7	607	29.3	2,026	97.9	44	2.1	2,070
November	1,477	72.6	558	27.4	1,976	97.1	59	2.9	2,035
December	1,459	72.6	551	27.4	1,945	96.8	65	3.2	2,010
2009									
January	1,405	68.6	642	31.4	1,952	95.4	95	4.6	2,047
February	1,454	69.4	641	30.6	2,025	96.7	70	3.3	2,095
March	1,371	68.8	623	31.2	1,914	96.0	80	4.0	1,994
April	1,333	68.9	601	31.1	1,871	96.7	63	3.3	1,934
May	1,445	69.2	643	30.8	2,017	96.6	71	3.4	2,088
June	1,556	71.5	619	28.5	2,122	97.6	53	2.4	2,175

Notes

Data extraction date

All data in this report is as at the end of the last day of each reported month.

Data revision

The most recent edition of reports should be consulted in case previously published data has been revised. Revisions can be due to updates to procedure codes, lags in data processing or other types of errors detected after publication.

Data source

Wait list extract data in ESWL reports is from the HCARE (Health Care and Related Information System), TOPAS (The Open Patient Administration System) and Joondalup and Peel data systems.

Data definitions

Data in ESWL reports is based on Australian Institute of Health and Welfare (AIHW) reporting guidelines.

Metropolitan public hospitals

The term 'metropolitan public hospital' refers to the following public hospitals - Armadale-Kelmscott District Hospital, Bentley Hospital, Fremantle Hospital, Joondalup Health Campus, Kalamunda Hospital, Kaleeya Hospital, King Edward Memorial Hospital, Osborne Park Hospital, Peel Health Campus, Princess Margaret Hospital, Rockingham General Hospital, Royal Perth Hospital, Royal Perth Rehabilitation Hospital, Sir Charles Gairdner Hospital and Swan District Hospital.

Specialty

Specialty is "The area of clinical expertise held by the doctor who will perform the elective surgery". (Source: Australian Hospital Statistics, AIHW.)

Indicator procedure

"An indicator procedure is a procedure which is of high volume and is often associated with long waiting periods. Elective surgery waiting time statistics for indicator procedures give a specific indication of waiting time for these particular areas of elective care provision." (Source: Australian Hospital Statistics, AIHW.)

Cases on the waiting list

Cases on the ESWLs represent the number of people waiting. They are called cases (rather than people) because a person may be on the waiting list more than once. For example, if a person is

on the waiting list twice for two different procedures, then they will be counted as two cases.

Within boundary cases

A patient who has been waiting less than the recommended period in one of the three clinical urgency categories is defined as being within boundary. The clinical urgency categories prioritise patients from least urgent (Category 3) to most urgent (Category 1).

Category 1

Admission within 30 days is desirable for a condition that has the potential to deteriorate quickly to the point that it might become an emergency.

Category 2

Admission within 90 days is desirable for a condition causing pain, dysfunction or disability, which is not likely to deteriorate quickly or become an emergency.

Category 3

Admission at some time in the future is acceptable for a condition causing minimal or no pain, dysfunction or disability, which is unlikely to deteriorate quickly and does not have the potential to become an emergency.

For the purpose of identifying Category 3 patients who are waiting within or over boundary, WA has adopted the AIHW specified boundary used to define an 'extended wait,' ie patients waiting more than 365 days.

Cases admitted from the waiting list

Cases admitted from the waiting list are people admitted from the waiting list to hospital to have their surgery. They are called cases (rather than people) because a person may have been admitted for surgery on more than one occasion. For example, if a person was admitted twice during the reporting period, then they will be counted as two cases.

Other removals from the waiting list

Patients can be removed from the waiting list for a variety of reasons, other than admission to hospital for surgery. Removal reasons include that the procedure was no longer required (eg patient had their procedure in a private hospital), the patient was non-contactable (eg as part of audit procedures to check whether the patient still required their surgery), or that the database entry was incorrect (eg a duplicate case).