



# Metropolitan Elective Surgery Wait List Report: June 2009

© Department of Health, Western Australia

This work is copyright. Apart from any use as permitted under the *Copyright Act 1968*, no part may be reproduced without prior written permission from the Department of Health, Western Australia.

Requests and enquiries concerning reproduction and rights should be directed to -

Performance Reporting Branch  
Information Management & Reporting Directorate  
Department of Health, Western Australia  
PO Box 8172 Perth Business Centre  
Western Australia 6849

A list of the Department's publications concerning elective surgery is available from -

[www.health.wa.gov.au/ElectiveSurgery/waitinglist/](http://www.health.wa.gov.au/ElectiveSurgery/waitinglist/)

ISSN 1836-1617 (online)

ISSN 1836-1609 (print)

#### **Suggested citation**

Department of Health, Western Australia.

*Metropolitan Elective Surgery Wait List Report: June 2009.*

Perth: Performance Reporting Branch, Information Management & Reporting Directorate  
Department of Health, 2009.

#### **Report produced by**

Performance Reporting Branch, Information Management & Reporting Directorate,  
Health Information Network, Department of Health

Copies of this publication available at:

[www.health.wa.gov.au/ElectiveSurgery/waitinglist/](http://www.health.wa.gov.au/ElectiveSurgery/waitinglist/)

---

# Table of Contents

Key Points .....	i
Abbreviations .....	ii
Glossary .....	ii
Symbols .....	ii
List of Tables .....	iii
List of Figures .....	iii
1. On Wait List	
1.1 Number of cases .....	1
1.2 Waiting times .....	1
1.3 Long term trends .....	1
2. Admissions	
2.1 Number of cases .....	2
2.2 Waiting times .....	2
3. Time on Wait List	
3.1 Category 1 cases .....	4
3.2 Category 2 cases .....	4
3.3 Category 3 cases: longer than 365 days .....	4
3.4 Category 3 cases: less than or equal to 180 days .....	4
Appendices .....	A-1
Notes .....	A-10

## Key Points

### **On elective surgery wait list**

At the end of the month, there was a total of 11,633 cases on metropolitan public hospital wait lists. The median wait time for these cases was 62 days.

Of the 11,633 cases, 10,056 (86.4%) were within boundary.

### **Admissions**

There was a total of 5,312 admissions from metropolitan public hospital wait lists in the current month. The median wait time for these admissions was 32 days.

Of the 5,312 admissions, 4,502 (84.8%) were within boundary.

---

## Abbreviations

AHS	Area Health Service
AIHW	Australian Institute of Health and Welfare
CAHS	Child and Adolescent Health Service
DNA	Did not attend
FH	Fremantle Hospital
JHC	Joondalup Health Campus
KEMH	King Edward Memorial Hospital
NA	Not available
NMAHS	North Metropolitan Area Health Service Includes: <i>Kalamunda Hospital, King Edward Memorial Hospital, Osborne Park Hospital, Sir Charles Gairdner Hospital and Swan District Hospital.</i>
PHC	Peel Health Campus
PMH	Princess Margaret Hospital for Children
qtr	Quarter
RPH	Royal Perth Hospital
RPH SPC	Royal Perth Hospital Shenton Park Campus (also known as RPH Rehabilitation Hospital)
SCGH	Sir Charles Gairdner Hospital
SMAHS	South Metropolitan Area Health Service Includes: <i>Armadale-Kelmscott Memorial Hospital, Bentley Hospital, Fremantle Hospital, Kaleeya Hospital, Rockingham General Hospital, Royal Perth Hospital and Royal Perth Rehabilitation Hospital.</i>
TOPAS	The Open Patient Administration System
WA	Western Australia
WACHS	Western Australian Country Health Service

## Glossary

**Mean:** This refers to the arithmetic mean, being the sum of all values in the list divided by the number of items in the list. The mean is the most commonly-used type of average and can also be referred to simply as the average.

**Median:** This refers to the value separating the higher half of a sample, a population, or a probability distribution, from the lower half. This statistic is used, in preference to the mean, when the distribution of the values is skewed by a small number of very high values.

**90th percentile:** This refers to the value in the list below which there are 90 percent of numbers and which enables waiting times to be expressed as a percentile rank.

However, as percentile ranks are not on equal interval scales, the difference between any two scores is not the same between any other two scores. For instance, the difference of 25 between percentile ranks of 90 and 65 is not the same as the difference of 25 between 50 and 25 as the position rank of a percentile is based on an assumed normal distribution of all values.

## Symbols

- nil

---

## List of Tables

Table 1:	Cases on wait lists at 30 June 2008, 31 May 2009 & 30 June 2009 .....	1
Table 2:	Admissions from wait lists in June 2008, May 2009 & June 2009 .....	2
Table A-1:	Wait lists & admissions, July 2006 - June 2009 .....	A-1
Table A-2:	Monthly cases on wait lists by duration, July 2006 - June 2009.....	A-2
Table A-3:	Category 1 cases on wait lists by duration, July 2006 - June 2009 .....	A-3
Table A-4:	Category 2 cases on wait lists by duration, July 2006 - June 2009 .....	A-4
Table A-5:	Category 3 cases on wait lists by duration, July 2006 - June 2009 .....	A-5
Table A-6:	Cases on wait lists by urgency category, surgical specialty & health service at 30 June 2009.....	A-6
Table A-7:	Total half yearly cases & median wait time on wait lists, July 1999 - June 2009.....	A-7
Table A-8:	Median waiting time (days) of cases on wait lists by urgency category, surgical specialty & health service at 30 June 2009 .....	A-8

## List of Figures

Figure 1:	Cases on wait lists, January 2007 - June 2009 .....	1
Figure 2:	Median waiting time (months) of cases on wait lists, January 2007 to June 2009.....	2
Figure 3:	Admissions from wait lists, January 2007 - June 2009.....	3
Figure 4:	Median waiting time (months) of cases admitted to hospital, January 2007 - June 2009 .....	3
Figure 5:	Category 1 cases & proportion (%) of cases within boundary on wait lists, January 2007 - June 2009 .....	5
Figure 6:	Category 1 cases over boundary on wait lists, January 2007 - June 2009 .....	5
Figure 7:	Category 2 cases & proportion (%) of cases within boundary on wait lists, January 2007 - June 2009 .....	6
Figure 8:	Category 2 cases over boundary on wait lists, January 2007 - June 2009 .....	6
Figure 9:	Category 3 cases & proportion (%) of cases within boundary on wait lists, January 2007 - June 2009 .....	7
Figure 10:	Category 3 cases over boundary on wait lists, January 2007 - June 2009 .....	7
Figure 11:	Category 3 cases & proportion (%) of cases waiting within 180 days on wait lists, January 2007 - June 2009 .....	8
Figure 12:	Category 3 cases waiting more than 180 days on wait lists, January 2007 - June 2009 .....	8
Figure A-1:	Half yearly cases & median wait time on wait lists, July 1999 - June 2009.....	A-9

# 1. On Wait List

## 1.1 Number of cases

Table 1 compares the number of cases on metropolitan public hospital wait lists for the current reporting month to the previous month and to the same month last year.

This table shows that at 30 June 2009 there were 11,633 cases on these wait lists - a decrease of 83 compared to the previous month (11,716 cases) and a decrease of 364 compared to the same month last year (11,997 cases). (For longer term monthly trends see Table A-1, page A-1.)

See Figure 1 for an overview of trends in the number of cases at the end of the month from January 2007 up to the present.

## 1.2 Waiting times

Table 1 compares the compares the median

and 90th percentile waiting time of cases on metropolitan public hospital wait lists for the current reporting month to the previous month and to the same month last year.

This table shows the median wait time at the end of June 2009 was 2.04 months - 2 less days than the previous month (2.09 months) and 13 days fewer compared with the same month last year (2.47 months). (For longer term monthly trends see Table A-1, page A-1.)

See Figure 2 (page 2) for an overview of trends in median wait time at the end of the month from January 2007 up to the present.

## 1.3 Long term trends

See Table A-7 (page A-7) and Figure A-1 (page A-9) for an overview of trends for the half yearly number of cases and median waiting time since the end of July 1999.

**Table 1: Cases on wait lists at 30 June 2008, 31 May 2009 & 30 June 2009**

	Total	Waiting time			
		Median		90th percentile	
		Days	Months	Days	Months
30 June 2008	11,997	75	2.47	284	9.34
31 May 2009	11,716	64	2.09	246	8.09
30 June 2009	11,633	62	2.04	244	8.02

**Figure 1: Cases on wait lists, January 2007 - June 2009**

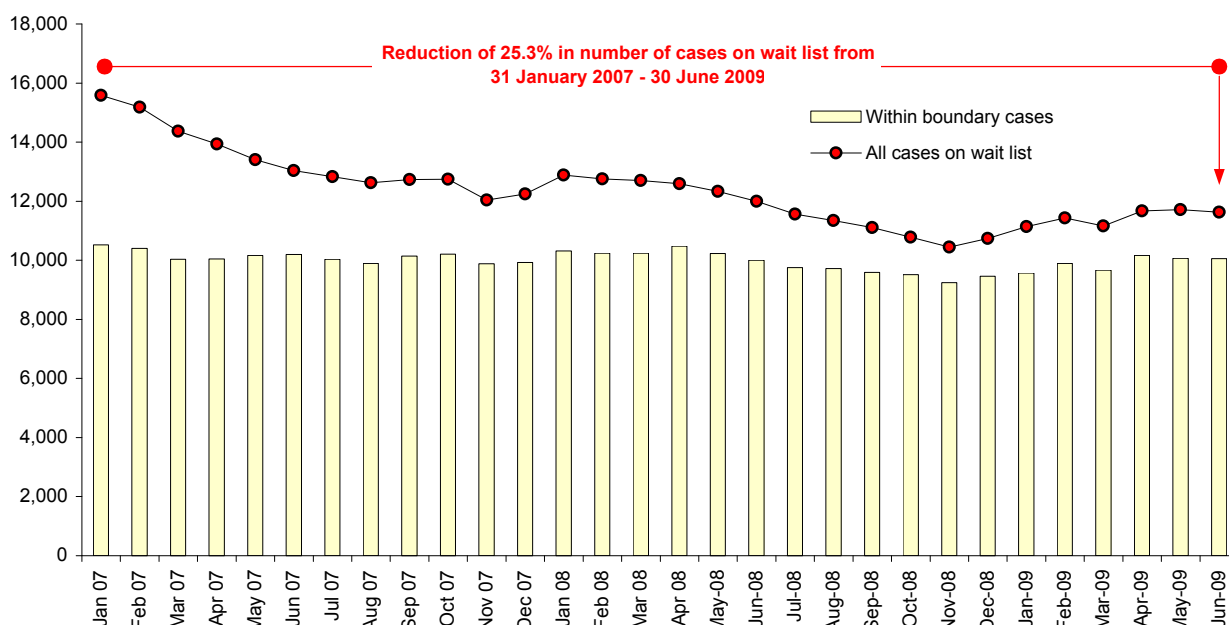
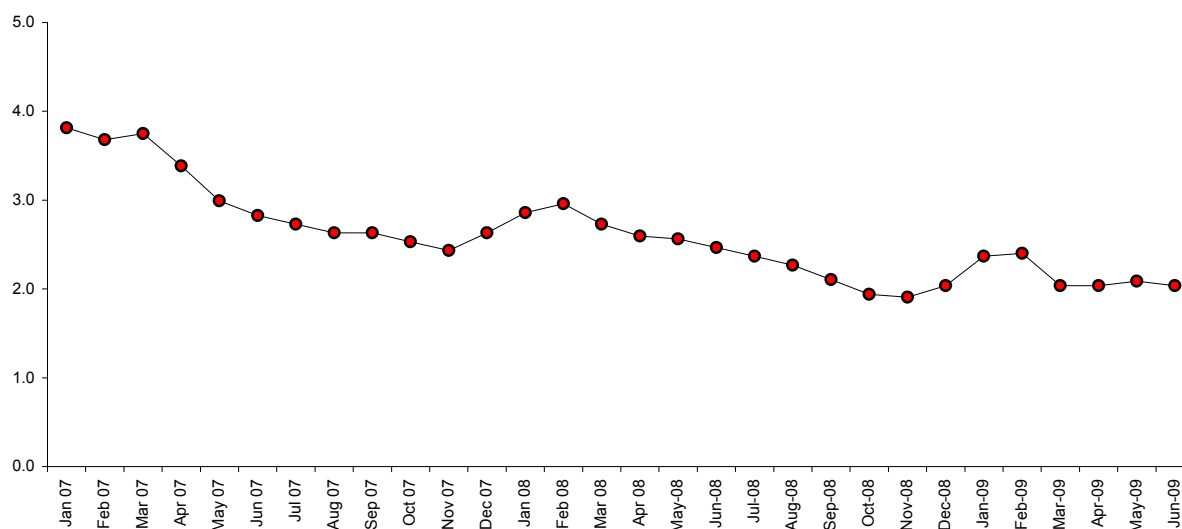


Figure 2: Median waiting time (months) of cases on wait lists, January 2007 to June 2009



## 2. Admissions

### 2.1 Number of cases

Table 2 compares the number of cases admitted from metropolitan public hospital wait lists for the current reporting month to the previous month and to the same month last year.

This table shows that in June 2009 there was a total of 5,312 admissions - an increase of 126 compared to the previous month (5,186 admissions) and an increase of 190 compared to the same month last year (5,122 admissions). (For longer term monthly trends, see Table A-1, page A-1.)

Figure 3 (page 3) provides an overview of monthly trends in the number of cases admitted for surgery from January 2007 up to the present.

### 2.2 Waiting times

Table 2 compares the median and 90th percentile waiting time for cases admitted from metropolitan public hospital wait lists in the current reporting month to the previous month and to the same month last year.

This table shows the median wait time for admissions in June 2009 was 1.05 months - a decrease of 2 days compared to the previous month (1.12 months) and an increase of 2 days compared to same month last year (0.99 months). (For longer term monthly trends, see Table A-1, page A-1.)

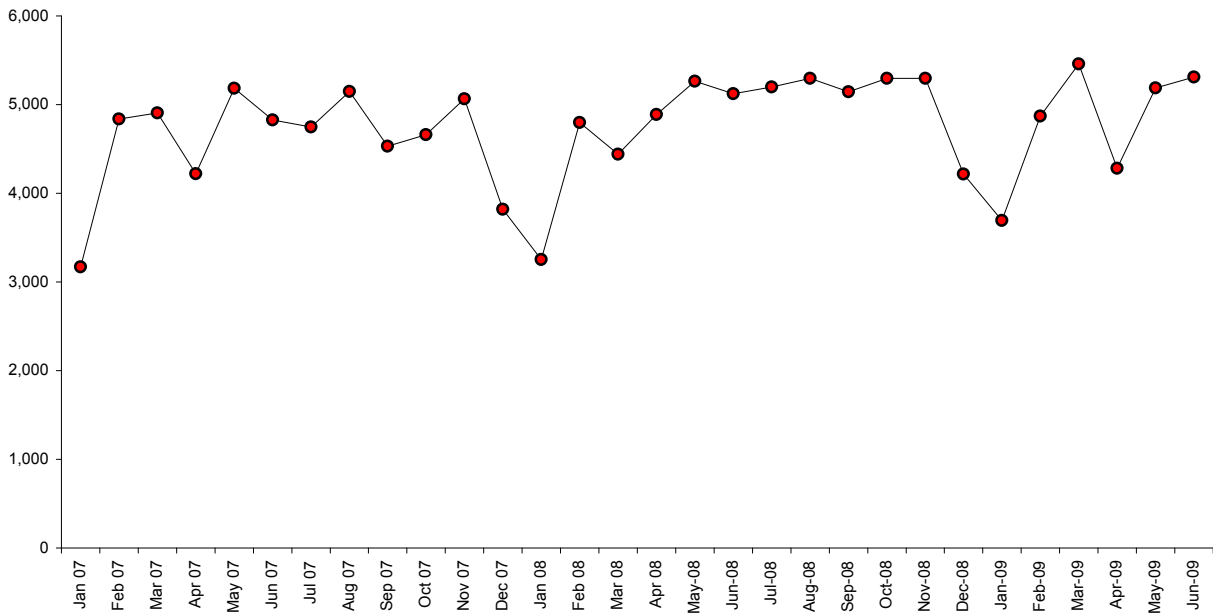
Figure 4 (page 3) provides an overview of monthly trends in the median wait time of cases admitted for surgery from January 2007 up to the present.

Table 2: Admissions from wait lists in June 2008, May 2009 & June 2009

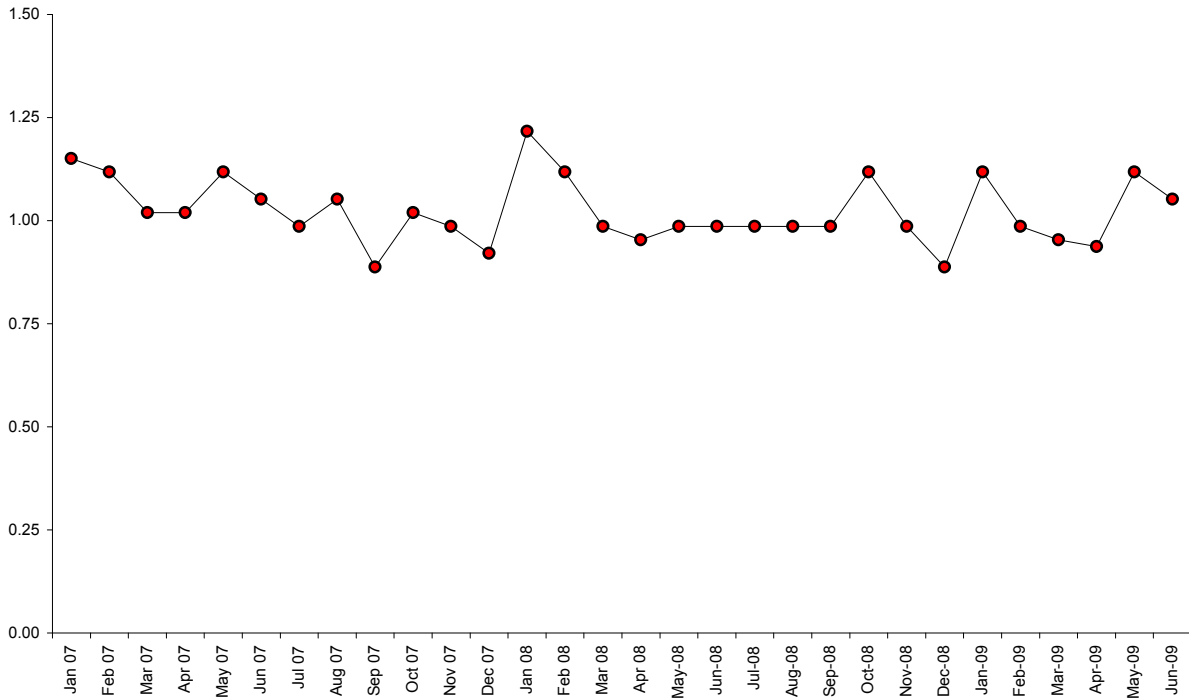
	Total	Waiting time			
		Median		90th percentile	
		Days	Months	Days	Months
June 2008	5,122	30	0.99	196	6.43
May 2009	5,186	34	1.12	168	5.52
June 2009	5,312	32	1.05	154	5.06

## Metropolitan Elective Surgery Wait List Report, June 2009

**Figure 3: Admissions from wait lists, January 2007 - June 2009**



**Figure 4: Median waiting time (months) of cases admitted to hospital, January 2007 - June 2009**



### 3. Time on Wait List

As at 30 June 2009, in relation to the 11,633 cases on wait lists, 253 (2.2%) had been waiting for more than 365 days, 222 (1.9%) had been waiting between 366 and 500 days and 31 (0.3%) had been waiting for more than 500 days (Table A-2, page A-2).

This means that 97.8% of all cases on metropolitan public hospital wait lists had been on the lists for 365 days or less.

#### 3.1 Category 1 cases

As at 30 June 2009, the proportion of Category 1 cases waiting within boundary (ie admission desirable within 30 days) was 79.8% (Table A-3, page A-3). This table also shows that the rate throughout the period has been relatively constant and has been around 80 per cent or greater in almost all months, except July 2006, January 2007 and May 2009.

As at 30 June 2009, the number of cases in this category waiting over the desirable boundary (ie admission within 30 days) was 183 (Table A-3). This table also shows that out of the 183 cases that were over the desirable boundary, 146 (79.8%) were booked.

Figures 5 and 6 (page 5) contain monthly data on the number of Category 1 cases, the proportion of cases within the boundary and the number of cases over the boundary since January 2007, to provide an overview of trends involving Category 1 cases.

#### 3.2 Category 2 cases

As at 30 June 2009, the proportion of Category 2 cases waiting within the boundary (ie admission desirable within 90 days) was 72.1% (Table A-4, page A-4). This table also shows that the proportion of Category 2 cases within the boundary steadily increased over the period from July 2006 (47.9%) and has been around 70 per cent or greater since September 2008.

As at 30 June 2009, the number of cases in this category waiting over the desirable boundary (ie admission within 90 days) was 1,201 (Table A-4).

A notable trend in Category 2 cases outside the boundary since the peak at the end of January 2007 (3,896 cases), was the steady decline in the number of cases per month up to November of 2008 (895 cases) and since then some increase in the number cases outside the boundary (Table A-4).

Figures 7 and 8 (page 6) contain monthly data on the number of Category 2 cases, the proportion of cases within the boundary and the number of cases over the boundary since January 2007, to provide an overview of trends involving this category.

#### 3.3 Category 3 cases: longer than 365 days

As at 30 June 2009, the proportion of Category 3 cases waiting within boundary (ie admission desirable within 365 days) was 97.0% (Table A-5, page A-5).

Table A-5 also shows that there has been a marked decline in the number of cases waiting outside the boundary from the end of July 2006 (1,563 cases) up to the present. It can be seen there has been a pattern of seasonal decline in the number of cases outside the boundary, in late 2007 to early 2008 and again in late 2008 to early 2009.

Throughout the period, there has been an improvement in the rate of cases within the boundary, increasing from July 2006 (82.2%) to rates around or above 95 per cent since June 2007.

Figures 9 and 10 (page 7) contain monthly data on the number of Category 3 cases, the proportion of cases within the boundary and the number of cases over the boundary since January 2007, to provide an overview of trends involving this category.

#### 3.4 Category 3 cases: less than or equal to 180 days

As at 30 June 2009, the proportion of Category 3 cases waiting 180 days or less was 75.0% (Table A-5, page A-5).

Table A-5 also shows that over the period, the number of cases per month waiting 180 days

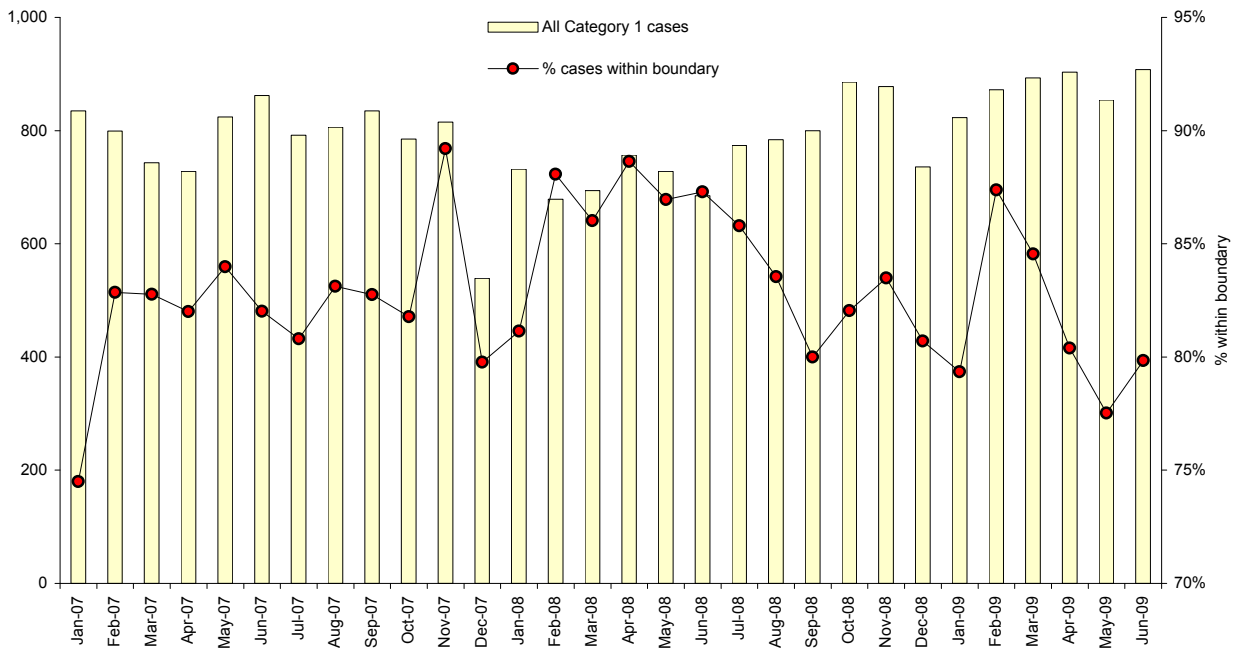
## Metropolitan Elective Surgery Wait List Report, June 2009

or less remained relatively constant, and that the within boundary rate has been close to 70 per cent or higher since June 2007.

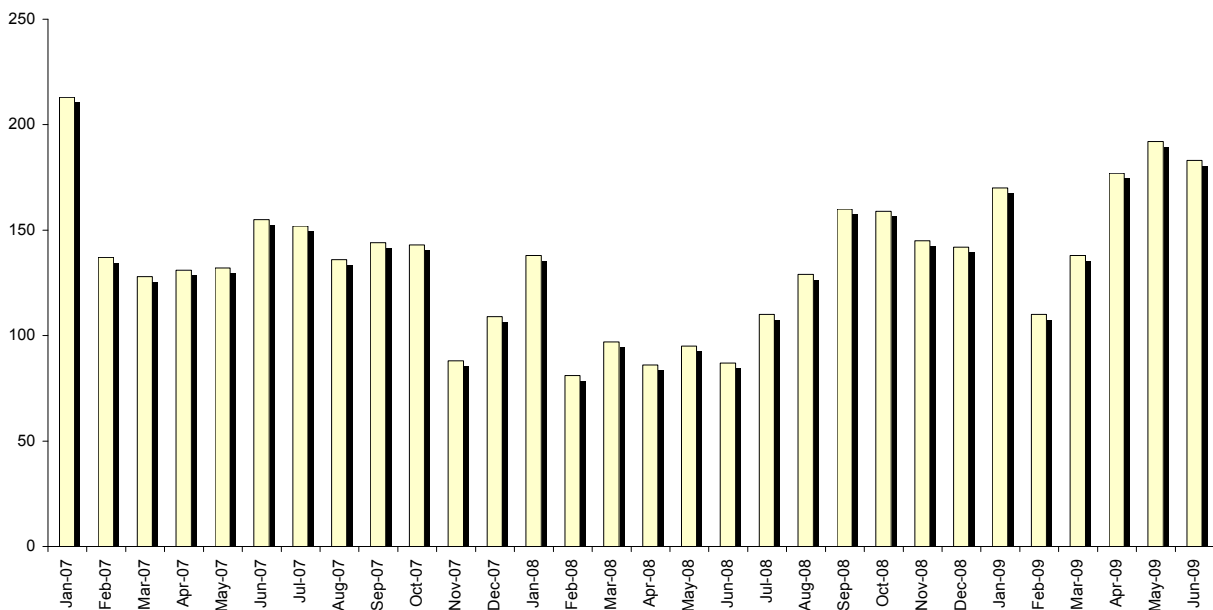
As at 30 June 2009, the number of cases in this category waiting for 180 days or less was 4,820 (Table A-5, page A-5).

Figures 11 and 12 (page 8) contain monthly data on the number of Category 3 cases, the proportion of cases waiting 180 days or less and the number of cases waiting more than 180 days since January 2007, to provide an overview of trends involving this category.

**Figure 5: Category 1 cases & proportion (%) of cases within boundary on wait lists, January 2007 - June 2009**

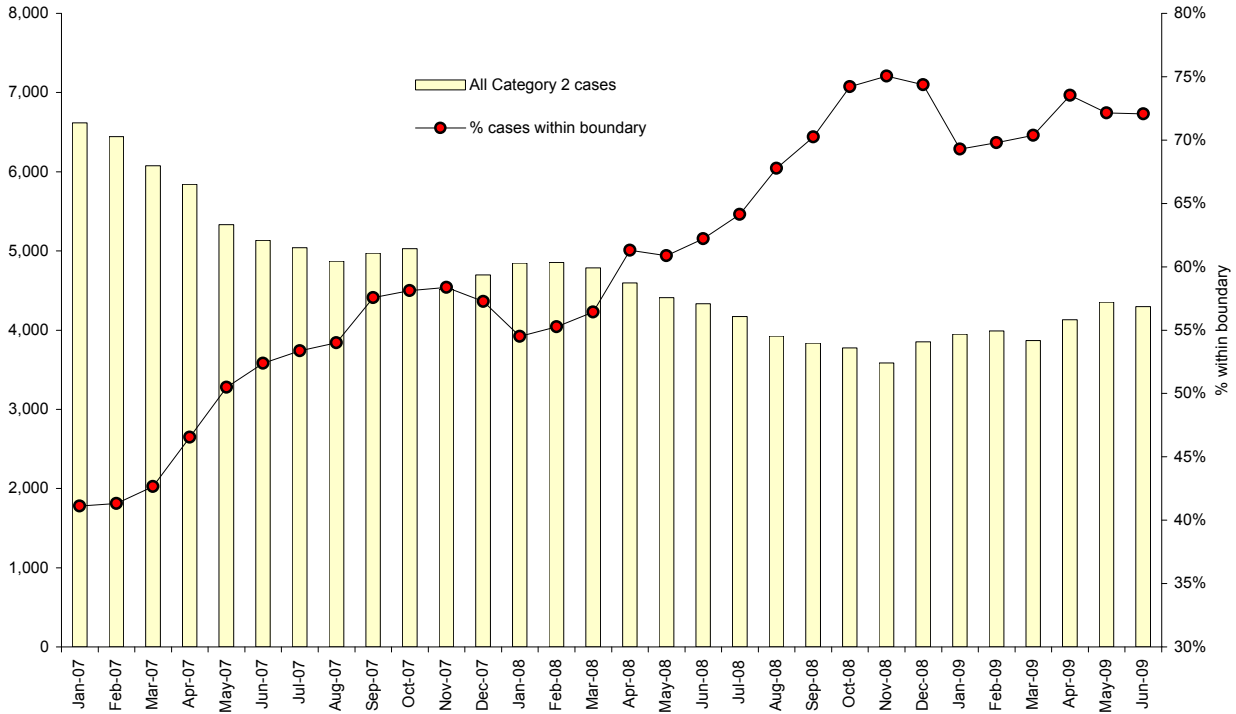


**Figure 6: Category 1 cases over boundary on wait lists, January 2007 - June 2009**

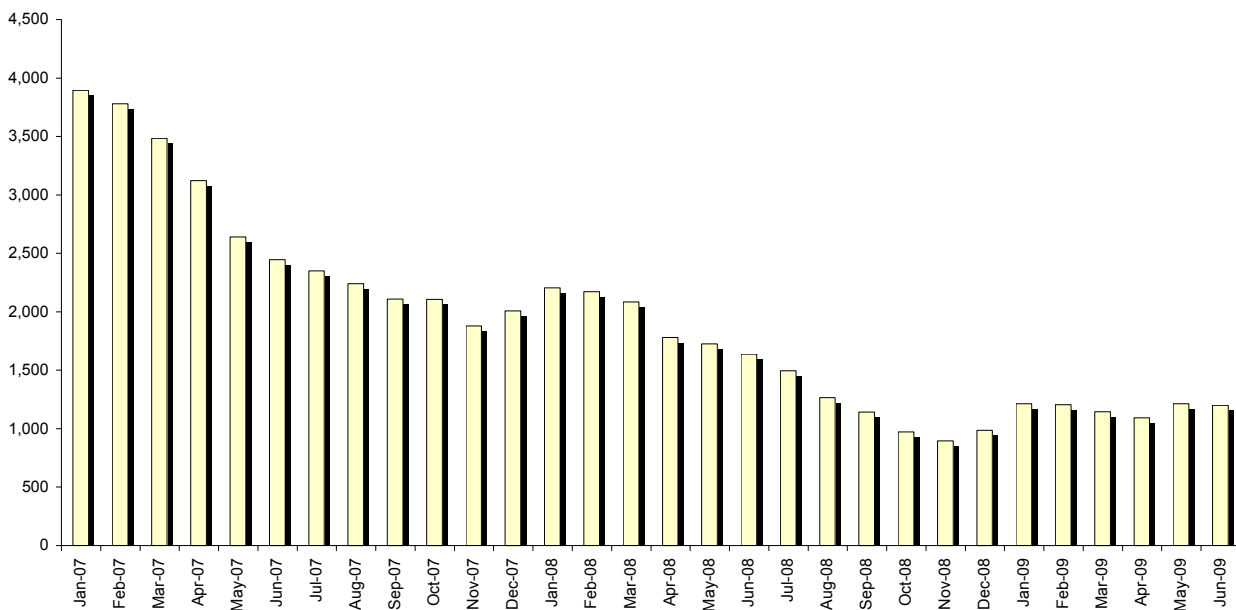


## Metropolitan Elective Surgery Wait List Report, June 2009

**Figure 7: Category 2 cases & proportion (%) of cases within boundary on wait lists, January 2007 - June 2009**

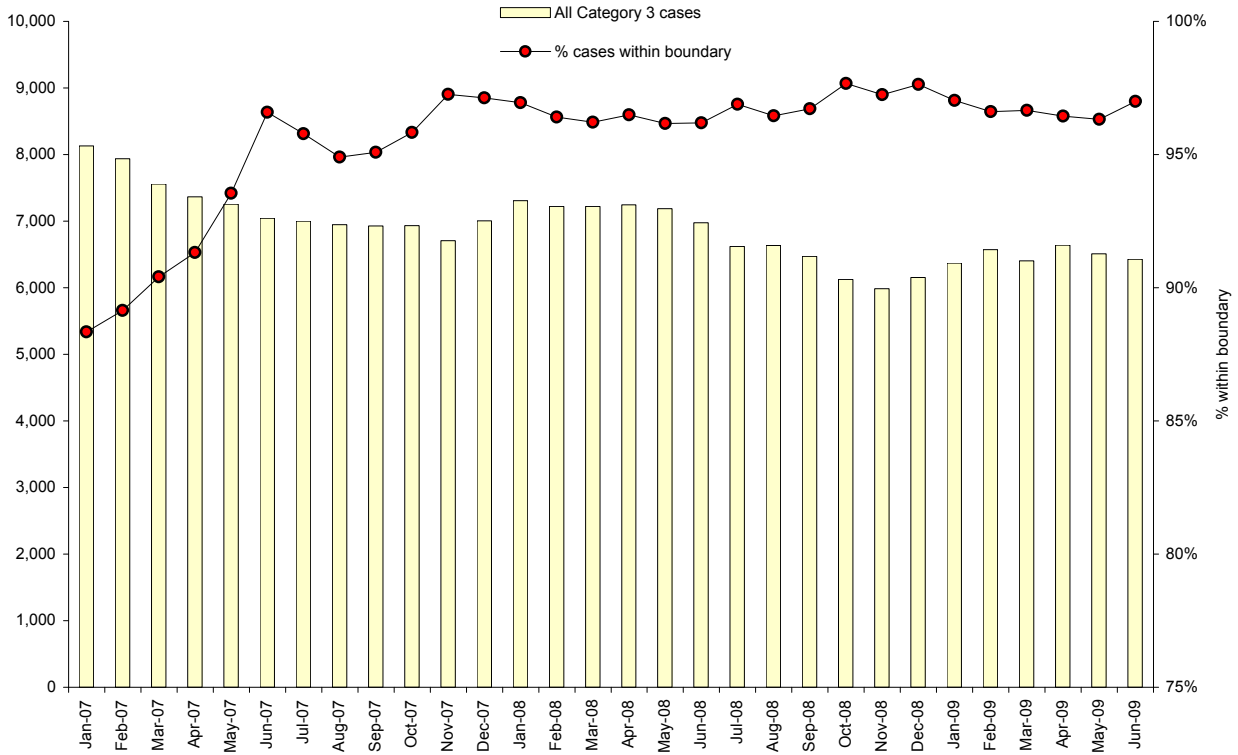


**Figure 8: Category 2 cases over boundary on wait lists, January 2007 - June 2009**

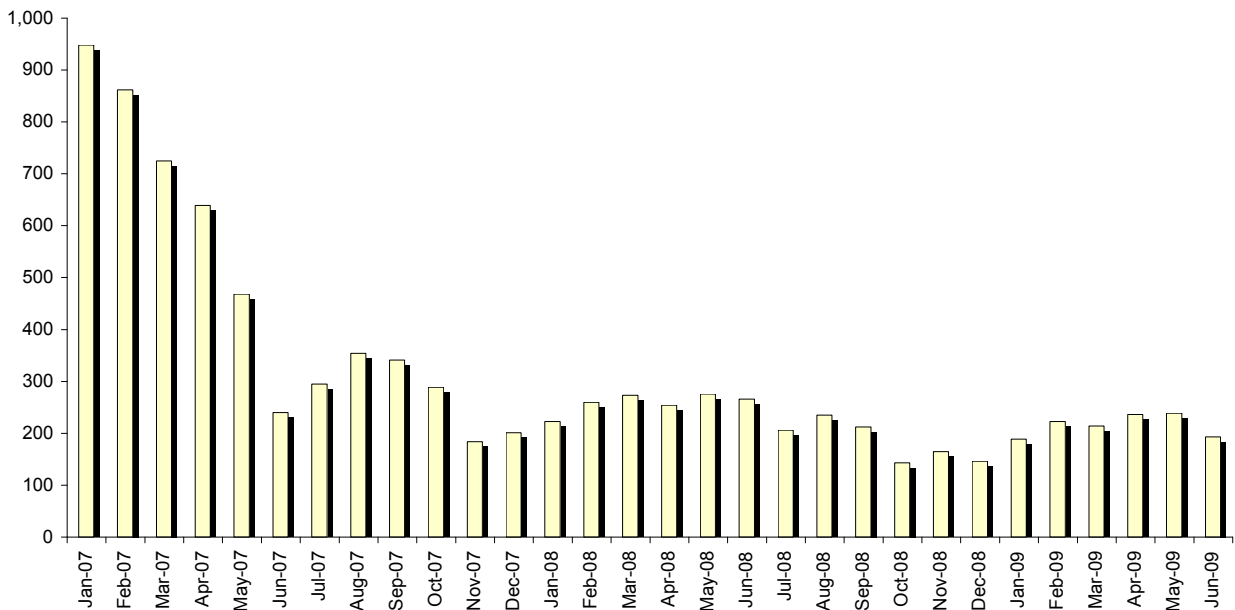


## Metropolitan Elective Surgery Wait List Report, June 2009

**Figure 9: Category 3 cases & proportion (%) of cases within boundary on wait lists, January 2007 - June 2009**

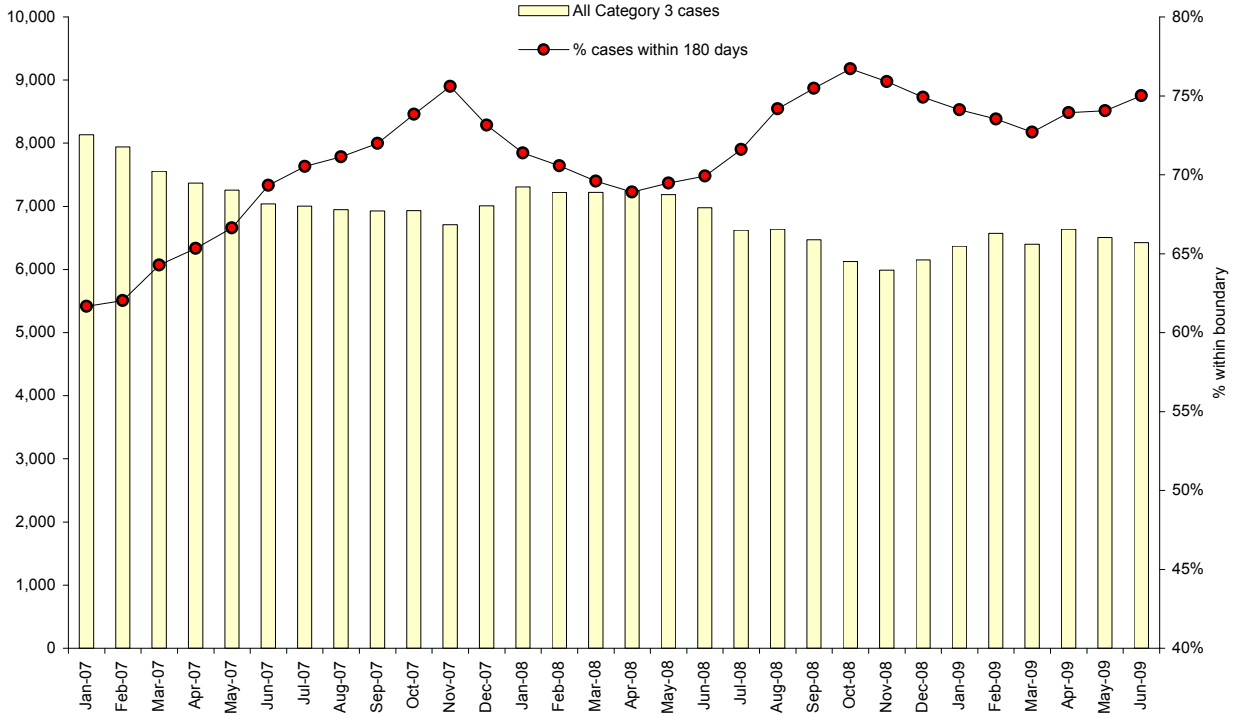


**Figure 10: Category 3 cases over boundary on wait lists, January 2007 - June 2009**

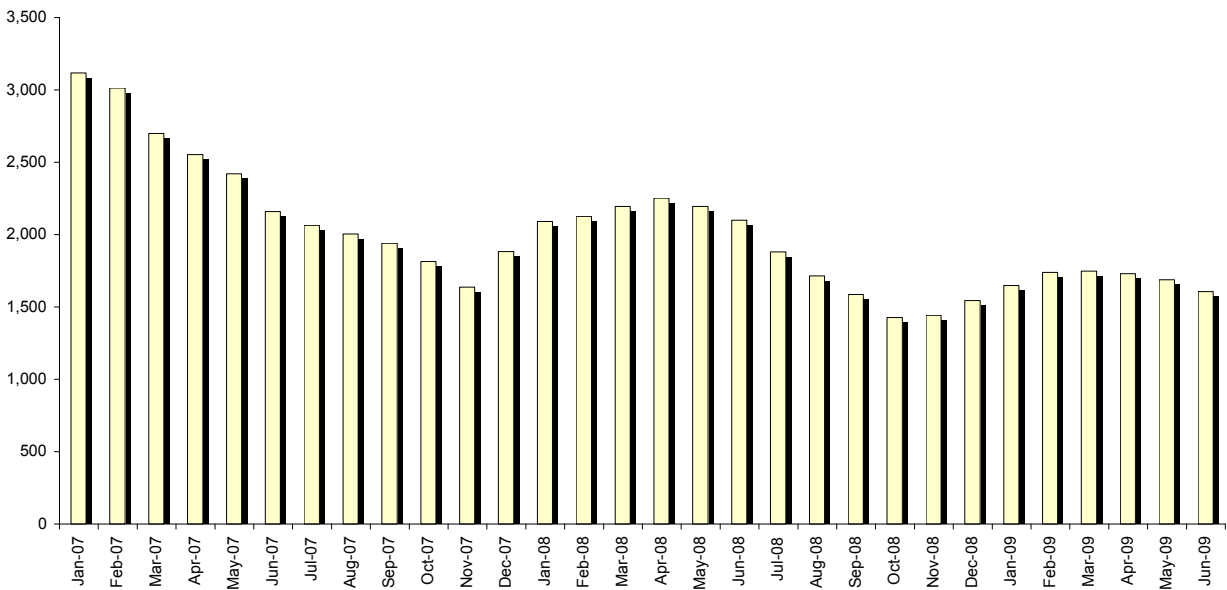


## Metropolitan Elective Surgery Wait List Report, June 2009

**Figure 11: Category 3 cases & proportion (%) of cases waiting within 180 days on wait lists, January 2007 - June 2009**



**Figure 12: Category 3 cases waiting more than 180 days on wait lists, January 2007 - June 2009**



# Appendices

**Table A-1: Wait lists & admissions, July 2006 - June 2009**

	Cases on wait lists at end of month						Admissions from wait lists in month					
	Total	Within boundary	Waiting time				Total	Within boundary	Waiting time			
			Median		90th percentile				Median		90th percentile	
			Days	Mths	Days	Mths			Days	Mths	Days	Mths
<b>2006</b>												
July	16,439	11,111	112	3.68	419	13.78	4,704	3,731	32	1.05	230	7.56
August	16,007	10,834	106	3.48	416	13.68	5,180	4,107	33	1.08	228	7.50
September	15,811	10,878	106	3.48	402	13.22	4,794	3,788	28	0.92	241	7.91
October	15,570	10,698	108	3.55	389	12.79	4,723	3,814	31	1.02	230	7.56
November	15,364	10,693	104	3.42	374	12.30	5,101	4,147	28	0.92	217	7.13
December	15,242	10,598	109	3.58	357	11.74	3,850	3,141	26	0.85	238	7.81
<b>2007</b>												
January	15,583	10,526	116	3.81	362	11.90	3,171	2,520	35	1.15	203	6.67
February	15,181	10,401	112	3.68	362	11.90	4,836	3,859	34	1.12	223	7.32
March	14,375	10,038	114	3.75	346	11.38	4,907	3,907	31	1.02	260	8.55
April	13,936	10,044	103	3.39	336	11.05	4,221	3,380	31	1.02	280	9.21
May	13,409	10,170	91	2.99	299	9.83	5,184	4,163	34	1.12	276	9.07
June	13,037	10,197	86	2.83	290	9.53	4,827	3,820	32	1.05	267	8.78
July	12,835	10,038	83	2.73	293	9.63	4,748	3,918	30	0.99	232	7.63
August	12,622	9,892	80	2.63	292	9.60	5,148	4,250	32	1.05	215	7.07
September	12,736	10,141	80	2.63	292	9.60	4,529	3,772	27	0.89	190	6.25
October	12,744	10,207	77	2.53	275	9.04	4,659	3,892	31	1.02	209	6.87
November	12,039	9,887	74	2.43	256	8.42	5,064	4,225	30	0.99	221	7.27
December	12,241	9,924	80	2.63	263	8.65	3,821	3,221	28	0.92	182	5.98
<b>2008</b>												
January	12,885	10,319	87	2.86	267	8.78	3,254	2,700	37	1.22	198	6.51
February	12,757	10,244	90	2.96	268	8.81	4,799	4,000	34	1.12	199	6.54
March	12,698	10,243	83	2.73	280	9.21	4,442	3,684	30	0.99	190	6.25
April	12,597	10,478	79	2.60	281	9.24	4,887	4,182	29	0.95	200	6.58
May	12,327	10,230	78	2.56	280	9.21	5,262	4,537	30	0.99	211	6.94
June	11,997	10,006	75	2.47	284	9.34	5,122	4,414	30	0.99	196	6.43
July	11,567	9,755	72	2.37	275	9.04	5,198	4,482	30	0.99	204	6.71
August	11,345	9,716	69	2.27	270	8.88	5,295	4,517	30	0.99	198	6.49
September	11,106	9,592	64	2.10	252	8.28	5,145	4,442	30	0.99	193	6.33
October	10,786	9,511	59	1.94	232	7.63	5,297	4,518	34	1.12	191	6.28
November	10,451	9,246	58	1.91	229	7.53	5,296	4,593	30	0.99	174	5.70
December	10,740	9,465	62	2.04	233	7.66	4,217	3,667	27	0.89	163	5.34
<b>2009</b>												
January	11,140	9,568	72	2.37	244	8.02	3,692	3,164	34	1.12	149	4.90
February	11,432	9,894	73	2.40	250	8.20	4,871	4,144	30	0.99	158	5.19
March	11,163	9,665	62	2.04	252	8.28	5,457	4,641	29	0.95	161	5.29
April	11,674	10,167	62	2.04	247	8.12	4,282	3,687	29	0.94	170	5.59
May	11,716	10,072	64	2.09	246	8.09	5,186	4,418	34	1.12	168	5.52
June	11,633	10,056	62	2.04	244	8.02	5,312	4,502	32	1.05	154	5.06

## Metropolitan Elective Surgery Wait List Report, June 2009

**Table A-2: Monthly cases on wait lists by duration, July 2006 - June 2009**

	Within 365 days		366 - 500 days		More than 500 days		More than 365 days		Total
	n	%	n	%	n	%	n	%	
<b>2006</b>									
July	14,242	86.6	1,197	7.3	1,000	6.1	2,197	13.4	16,439
August	13,890	86.8	1,128	7.0	989	6.2	2,117	13.2	16,007
September	13,836	87.5	1,107	7.0	868	5.5	1,975	12.5	15,811
October	13,751	88.3	1,049	6.7	770	4.9	1,819	11.7	15,570
November	13,724	89.3	1,093	7.1	547	3.6	1,640	10.7	15,364
December	13,759	90.3	1,201	7.9	282	1.9	1,483	9.7	15,242
<b>2007</b>									
January	14,072	90.3	1,149	7.4	362	2.3	1,511	9.7	15,583
February	13,741	90.5	1,087	7.2	353	2.3	1,440	9.5	15,181
March	13,144	91.4	910	6.3	321	2.2	1,231	8.6	14,375
April	12,908	92.6	665	4.8	363	2.6	1,028	7.4	13,936
May	12,669	94.5	527	3.9	213	1.6	740	5.5	13,409
June	12,635	96.9	316	2.4	86	0.7	402	3.1	13,037
July	12,342	96.2	390	3.0	103	0.8	493	3.8	12,835
August	12,060	95.5	479	3.8	83	0.7	562	4.5	12,622
September	12,179	95.6	488	3.8	69	0.5	557	4.4	12,736
October	12,252	96.1	413	3.2	79	0.6	492	3.9	12,744
November	11,753	97.6	244	2.0	42	0.3	286	2.4	12,039
December	11,942	97.6	256	2.1	43	0.4	299	2.4	12,241
<b>2008</b>									
January	12,544	97.4	275	2.1	66	0.5	341	2.6	12,885
February	12,354	96.8	324	2.5	79	0.6	403	3.2	12,757
March	12,253	96.5	374	2.9	71	0.6	445	3.5	12,698
April	12,175	96.6	343	2.7	79	0.6	422	3.4	12,597
May	11,892	96.5	353	2.9	82	0.7	435	3.5	12,327
June	11,589	96.6	343	2.9	65	0.5	408	3.4	11,997
July	11,244	97.2	277	2.4	46	0.4	323	2.8	11,567
August	11,022	97.2	271	2.4	52	0.5	323	2.8	11,345
September	10,819	97.4	247	2.2	40	0.4	287	2.6	11,106
October	10,590	98.2	178	1.7	18	0.2	196	1.8	10,786
November	10,392	99.4	45	0.4	14	0.1	59	0.6	10,451
December	10,558	98.3	164	1.5	18	0.2	182	1.7	10,740
<b>2009</b>									
January	10,897	97.8	212	1.9	31	0.3	243	2.2	11,140
February	11,155	97.6	237	2.1	40	0.3	277	2.4	11,432
March	10,895	97.6	235	2.1	33	0.3	268	2.4	11,163
April	11,385	97.5	258	2.2	31	0.3	289	2.5	11,674
May	11,408	97.4	275	2.3	33	0.3	308	2.6	11,716
June	11,380	97.8	222	1.9	31	0.3	253	2.2	11,633

Metropolitan Elective Surgery Wait List Report, June 2009

**Table A-3: Category 1 cases on wait lists by duration, July 2006 - June 2009**

	Within 30 days		More than 30 days			Total
	n	%	Booked	Unbooked	Total	
<b>2006</b>						
July	608	77.7	NA	NA	174	782
August	689	86.1	NA	NA	111	800
September	666	88.4	NA	NA	87	753
October	682	85.3	NA	NA	118	800
November	748	86.7	NA	NA	115	863
December	577	79.8	114	32	146	723
<b>2007</b>						
January	622	74.5	152	61	213	835
February	662	82.9	105	32	137	799
March	615	82.8	102	26	128	743
April	597	82.0	109	22	131	728
May	692	84.0	88	44	132	824
June	707	82.0	107	48	155	862
July	640	80.8	115	37	152	792
August	670	83.1	94	42	136	806
September	691	82.8	105	39	144	835
October	642	81.8	97	46	143	785
November	727	89.2	61	27	88	815
December	430	79.8	87	22	109	539
<b>2008</b>						
January	594	81.1	116	22	138	732
February	598	88.1	60	21	81	679
March	597	86.0	83	14	97	694
April	671	88.6	69	17	86	757
May	633	87.0	75	20	95	728
June	598	87.3	65	22	87	685
July	664	85.8	79	31	110	774
August	655	83.5	95	34	129	784
September	640	80.0	90	70	160	800
October	727	82.1	111	48	159	886
November	733	83.5	105	40	145	878
December	594	80.7	92	50	142	736
<b>2009</b>						
January	653	79.3	141	29	170	823
February	762	87.4	72	38	110	872
March	755	84.5	114	24	138	893
April	726	80.4	149	28	177	903
May	662	77.5	154	38	192	854
June	725	79.8	146	37	183	908

Metropolitan Elective Surgery Wait List Report, June 2009

Table A-4: Category 2 cases on wait lists by duration, July 2006 - June 2009

	Within 90 days		More than 90 days	Total
	n	%	n	
<b>2006</b>				
July	3,308	47.9	3,591	6,899
August	3,025	45.9	3,571	6,596
September	3,218	47.9	3,503	6,721
October	3,090	46.8	3,512	6,602
November	2,958	46.2	3,447	6,405
December	2,884	44.9	3,536	6,420
<b>2007</b>				
January	2,720	41.1	3,896	6,616
February	2,662	41.3	3,781	6,443
March	2,591	42.7	3,484	6,075
April	2,720	46.6	3,122	5,842
May	2,691	50.5	2,639	5,330
June	2,689	52.4	2,445	5,134
July	2,691	53.4	2,350	5,041
August	2,631	54.0	2,240	4,871
September	2,862	57.6	2,110	4,972
October	2,922	58.1	2,105	5,027
November	2,636	58.4	1,880	4,516
December	2,689	57.3	2,007	4,696
<b>2008</b>				
January	2,642	54.5	2,205	4,847
February	2,683	55.3	2,172	4,855
March	2,700	56.4	2,085	4,785
April	2,817	61.3	1,779	4,596
May	2,685	60.9	1,726	4,411
June	2,696	62.2	1,638	4,334
July	2,675	64.1	1,496	4,171
August	2,659	67.8	1,265	3,924
September	2,695	70.2	1,142	3,837
October	2,801	74.2	973	3,774
November	2,691	75.0	895	3,586
December	2,865	74.4	987	3,852
<b>2009</b>				
January	2,735	69.3	1,213	3,948
February	2,784	69.8	1,205	3,989
March	2,722	70.4	1,146	3,868
April	3,038	73.5	1,094	4,132
May	3,141	72.1	1,213	4,354
June	3,098	72.1	1,201	4,299

Metropolitan Elective Surgery Wait List Report, June 2009

Table A-5: Category 3 cases on wait lists by duration, July 2006 - June 2009

	180 days				365 days				Total
	Within 180 days		More than 180 days		Within 365 days		More than 365 days		
	n	%	n	%	n	%	n	%	
<b>2006</b>									
July	5,168	59.0	3,590	41.0	7,195	82.2	1,563	17.8	8,758
August	5,094	59.2	3,517	40.8	7,120	82.7	1,491	17.3	8,611
September	5,028	60.3	3,309	39.7	6,994	83.9	1,343	16.1	8,337
October	5,031	61.6	3,137	38.4	6,926	84.8	1,242	15.2	8,168
November	5,043	62.3	3,053	37.7	6,987	86.3	1,109	13.7	8,096
December	5,119	63.2	2,980	36.8	7,137	88.1	962	11.9	8,099
<b>2007</b>									
January	5,014	61.7	3,118	38.3	7,184	88.3	948	11.7	8,132
February	4,925	62.0	3,014	38.0	7,077	89.1	862	10.9	7,939
March	4,857	64.3	2,700	35.7	6,832	90.4	725	9.6	7,557
April	4,812	65.3	2,554	34.7	6,727	91.3	639	8.7	7,366
May	4,834	66.6	2,421	33.4	6,787	93.5	468	6.5	7,255
June	4,881	69.3	2,160	30.7	6,801	96.6	240	3.4	7,041
July	4,938	70.5	2,064	29.5	6,707	95.8	295	4.2	7,002
August	4,941	71.1	2,004	28.9	6,591	94.9	354	5.1	6,945
September	4,988	72.0	1,941	28.0	6,588	95.1	341	4.9	6,929
October	5,118	73.8	1,814	26.2	6,643	95.8	289	4.2	6,932
November	5,071	75.6	1,637	24.4	6,524	97.3	184	2.7	6,708
December	5,124	73.1	1,882	26.9	6,805	97.1	201	2.9	7,006
<b>2008</b>									
January	5,215	71.4	2,091	28.6	7,083	96.9	223	3.1	7,306
February	5,097	70.6	2,126	29.4	6,963	96.4	260	3.6	7,223
March	5,024	69.6	2,195	30.4	6,946	96.2	273	3.8	7,219
April	4,991	68.9	2,253	31.1	6,990	96.5	254	3.5	7,244
May	4,994	69.5	2,194	30.5	6,912	96.2	276	3.8	7,188
June	4,879	69.9	2,099	30.1	6,712	96.2	266	3.8	6,978
July	4,742	71.6	1,880	28.4	6,416	96.9	206	3.1	6,622
August	4,923	74.2	1,714	25.8	6,402	96.5	235	3.5	6,637
September	4,882	75.5	1,587	24.5	6,257	96.7	212	3.3	6,469
October	4,699	76.7	1,427	23.3	5,983	97.7	143	2.3	6,126
November	4,544	75.9	1,443	24.1	5,822	97.2	165	2.8	5,987
December	4,608	74.9	1,544	25.1	6,006	97.6	146	2.4	6,152
<b>2009</b>									
January	4,721	74.1	1,648	25.9	6,180	97.3	189	3.0	6,369
February	4,831	73.5	1,740	26.5	6,348	96.6	223	3.4	6,571
March	4,654	72.7	1,748	27.3	6,188	96.7	214	3.3	6,402
April	4,908	73.9	1,731	26.1	6,403	96.4	236	3.6	6,639
May	4,819	74.0	1,689	26.0	6,269	96.3	239	3.7	6,508
June	4,820	75.0	1,606	25.0	6,233	97.0	193	3.0	6,426

## Metropolitan Elective Surgery Wait List Report, June 2009

**Table A-6: Cases on wait lists by urgency category, surgical specialty & health service at 30 June 2009**

	Urgency	NMAHS	SMAHS	CAHS	Total
Cardiothoracic surgery	1	5	16	-	21
	2	5	13	-	18
	3	-	6	3	9
	<i>Sub total</i>	<i>10</i>	<i>35</i>	<i>3</i>	<i>48</i>
Ear, nose & throat	1	9	13	7	29
	2	143	234	235	612
	3	377	357	99	833
	<i>Sub total</i>	<i>529</i>	<i>604</i>	<i>341</i>	<i>1,474</i>
General surgery	1	89	60	-	149
	2	401	310	-	711
	3	590	298	-	888
	<i>Sub total</i>	<i>1,080</i>	<i>668</i>	<i>-</i>	<i>1,748</i>
Gynaecology	1	16	13	-	29
	2	117	71	-	188
	3	337	83	-	420
	<i>Sub total</i>	<i>470</i>	<i>167</i>	<i>-</i>	<i>637</i>
Neurosurgery	1	16	-	-	16
	2	123	-	1	124
	3	64	-	1	65
	<i>Sub total</i>	<i>203</i>	<i>-</i>	<i>2</i>	<i>205</i>
Ophthalmology	1	8	19	2	29
	2	177	356	14	547
	3	545	924	68	1,537
	<i>Sub total</i>	<i>730</i>	<i>1,299</i>	<i>84</i>	<i>2,113</i>
Orthopaedic surgery	1	17	24	6	47
	2	506	427	53	986
	3	348	836	65	1,249
	<i>Sub total</i>	<i>871</i>	<i>1,287</i>	<i>124</i>	<i>2,282</i>
Paediatric surgery	1	-	-	10	10
	2	8	12	141	161
	3	75	49	101	225
	<i>Sub total</i>	<i>83</i>	<i>61</i>	<i>252</i>	<i>396</i>
Plastic surgery	1	83	101	-	184
	2	173	111	24	308
	3	71	120	92	283
	<i>Sub total</i>	<i>327</i>	<i>332</i>	<i>116</i>	<i>775</i>
Urology	1	53	143	-	196
	2	115	327	-	442
	3	138	143	-	281
	<i>Sub total</i>	<i>306</i>	<i>613</i>	<i>-</i>	<i>919</i>
Vascular surgery	1	37	10	-	47
	2	22	36	-	58
	3	102	68	-	170
	<i>Sub total</i>	<i>161</i>	<i>114</i>	<i>-</i>	<i>275</i>

Note: Table continued next page.

## Metropolitan Elective Surgery Wait List Report, June 2009

**Table A-6: Cases on wait lists by urgency category, surgical specialty & health service at 30 June 2009 (continued)**

	Urgency	NMAHS	SMAHS	CAHS	Total
Other specialty	1	80	60	11	151
	2	19	101	24	144
	3	202	261	3	466
	<i>Sub total</i>	<i>301</i>	<i>422</i>	<i>38</i>	<i>761</i>
All specialties	1	413	459	36	908
	2	1,809	1,998	492	4,299
	3	2,849	3,145	432	6,426
<b>Total</b>		<b>5,071</b>	<b>5,602</b>	<b>960</b>	<b>11,633</b>

**Table A-7: Total half yearly cases & median wait time on wait lists, at end of July 1999 - end of June 2009**

Year	Total	Median wait time (months)	Year	Total	Median wait time (months)
<b>1999</b>			<b>2005</b>		
31 July	21,546	4.90	30 June	17,775	4.18
31 December	20,288	4.67	31 December	16,802	3.95
<b>2000</b>			<b>2006</b>		
30 June	20,486	4.57	30 June	16,361	3.65
31 December	18,926	4.83	31 December	15,242	3.58
<b>2001</b>			<b>2007</b>		
30 June	19,183	4.96	30 June	13,037	2.83
31 December	17,850	5.88	31 December	12,241	2.63
<b>2002</b>			<b>2008</b>		
30 June	18,533	4.47	30 June	11,997	2.47
31 December	18,341	4.77	31 December	10,740	2.04
<b>2003</b>			<b>2009</b>		
30 June	18,303	4.54	30 June	11,633	2.04
31 December	18,153	4.64	31 December		
<b>2004</b>					
30 June	16,601	4.57			
31 December	17,470	4.01			

## Metropolitan Elective Surgery Wait List Report, June 2009

**Table A-8: Median waiting time (days) of cases on wait lists by urgency category, surgical specialty & health service at 30 June 2009**

	Urgency	NMAHS	SMAHS	CAHS	Total
Cardiothoracic surgery	1	5	14	-	11
	2	46	33	-	34
	3	-	24	281	28
	<i>Sub total</i>	6	20	281	20
Ear, nose & throat	1	8	12	13	12
	2	111	56	43	60
	3	159	95	49	105
	<i>Sub total</i>	131	77	43	77
General surgery	1	7	13	-	10
	2	53	35	-	41
	3	133	56	-	110
	<i>Sub total</i>	91	35	-	63
Gynaecology	1	9	7	-	7
	2	33	15	-	25
	3	71	36	-	60
	<i>Sub total</i>	53	19	-	42
Neurosurgery	1	19	-	-	19
	2	82	-	32	82
	3	159	-	399	159
	<i>Sub total</i>	85	-	216	85
Ophthalmology	1	15	7	9	11
	2	53	55	39	55
	3	90	75	188	83
	<i>Sub total</i>	83	65	136	72
Orthopaedic surgery	1	18	7	6	8
	2	54	42	112	50
	3	109	104	188	105
	<i>Sub total</i>	68	77	118	76
Paediatric Surgery	1	-	-	4	4
	2	19	69	67	67
	3	63	48	140	66
	<i>Total</i>	56	50	75	64
Plastic surgery	1	15	18	-	18
	2	105	47	39	64
	3	147	68	67	88
	<i>Sub total</i>	70	41	62	50
Urology	1	6	15	-	13
	2	38	45	-	41
	3	65	86	-	75
	<i>Sub total</i>	33	41	-	39
Vascular surgery	1	43	17	-	33
	2	54	30	-	34
	3	139	96	-	123
	<i>Sub total</i>	99	48	-	85

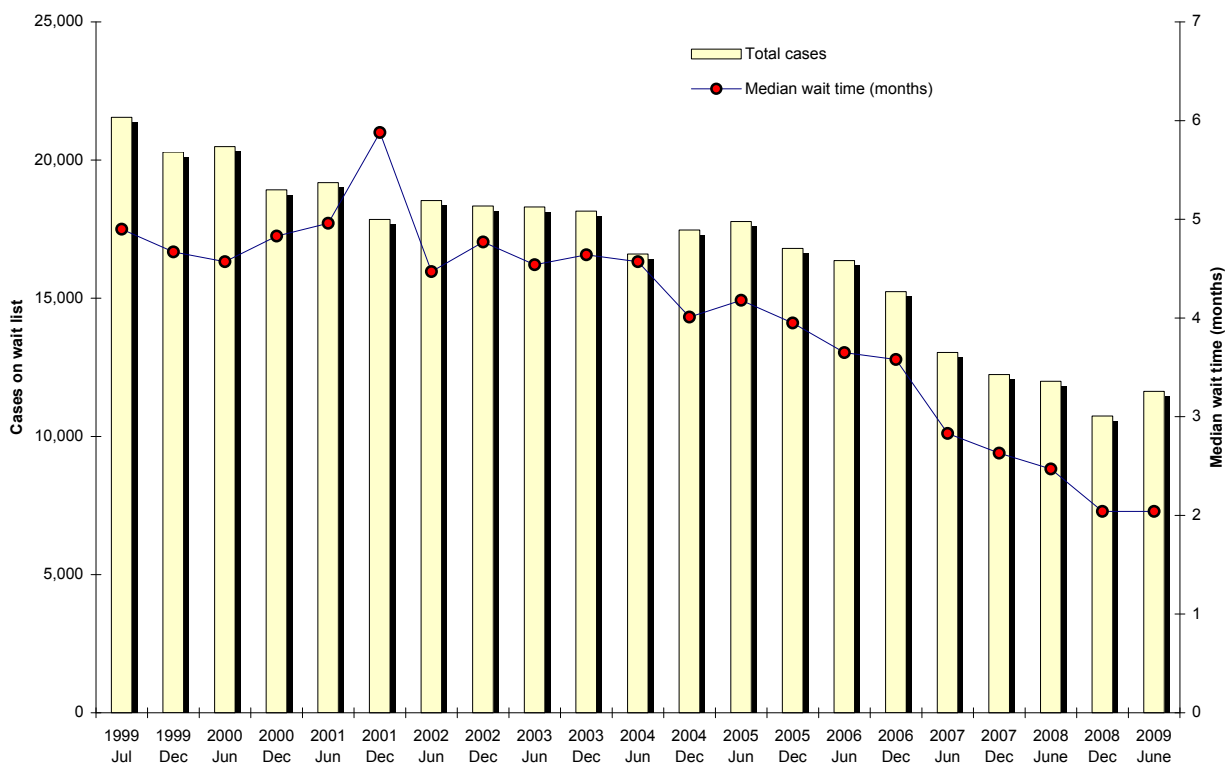
Note: Table continued next page.

## Metropolitan Elective Surgery Wait List Report, June 2009

**Table A-8: Median wait time (days) on wait lists by urgency category, surgical speciality & health service at 30 June 2009 (continued)**

	Urgency	NMAHS	SMAHS	CAHS	Total
Other specialty	1	8	7	11	8
	2	14	47	7	35
	3	35	48	77	40
	<i>Sub total</i>	22	35	11	27
All specialties	1	12	13	10	12
	2	55	43	50	48
	3	101	80	95	90
<b>Total</b>		<b>72</b>	<b>55</b>	<b>60</b>	<b>62</b>

**Figure A-1: Half yearly cases & median wait time on wait lists, July 1999 - June 2009**



## Notes

### Data extraction date

All data in this report is as at the end of the last day of each reported month.

### Data revision

The most recent edition of reports should be consulted in case previously published data has been revised. Revisions can be due to updates to procedure codes, lags in data processing or other types of errors detected after publication.

### Data source

Wait list extract data in ESWL reports is from the HCARE (Health Care and Related Information System), TOPAS (The Open Patient Administration System) and Joondalup and Peel data systems.

### Data definitions

Data in ESWL reports is based on Australian Institute of Health and Welfare (AIHW) reporting guidelines.

### Metropolitan public hospitals

The term 'metropolitan public hospital' refers to the following public hospitals - Armadale-Kelmscott District Hospital, Bentley Hospital, Fremantle Hospital, Joondalup Health Campus, Kalamunda Hospital, Kaleeya Hospital, King Edward Memorial Hospital, Osborne Park Hospital, Peel Health Campus, Princess Margaret Hospital, Rockingham General Hospital, Royal Perth Hospital, Royal Perth Rehabilitation Hospital, Sir Charles Gairdner Hospital and Swan District Hospital.

### Specialty

Specialty is "The area of clinical expertise held by the doctor who will perform the elective surgery". (Source: Australian Hospital Statistics, AIHW.)

### Indicator procedure

"An indicator procedure is a procedure which is of high volume and is often associated with long waiting periods. Elective surgery waiting time statistics for indicator procedures give a specific indication of waiting time for these particular areas of elective care provision." (Source: Australian Hospital Statistics, AIHW.)

### Cases on the waiting list

Cases on the ESWLs represent the number of people waiting. They are called cases (rather than people) because a person may be on the waiting list more than once. For example, if a person is

on the waiting list twice for two different procedures, then they will be counted as two cases.

### Within boundary cases

A patient who has been waiting less than the recommended period in one of the three clinical urgency categories is defined as being within boundary. The clinical urgency categories prioritise patients from least urgent (Category 3) to most urgent (Category 1).

### Category 1

Admission within 30 days is desirable for a condition that has the potential to deteriorate quickly to the point that it might become an emergency.

### Category 2

Admission within 90 days is desirable for a condition causing pain, dysfunction or disability, which is not likely to deteriorate quickly or become an emergency.

### Category 3

Admission at some time in the future is acceptable for a condition causing minimal or no pain, dysfunction or disability, which is unlikely to deteriorate quickly and does not have the potential to become an emergency.

For the purpose of identifying Category 3 patients who are waiting within or over boundary, WA has adopted the AIHW specified boundary used to define an 'extended wait,' ie patients waiting more than 365 days.

### Cases admitted from the waiting list

Cases admitted from the waiting list are people admitted from the waiting list to hospital to have their surgery. They are called cases (rather than people) because a person may have been admitted for surgery on more than one occasion. For example, if a person was admitted twice during the reporting period, then they will be counted as two cases.

### Other removals from the waiting list

Patients can be removed from the waiting list for a variety of reasons, other than admission to hospital for surgery. Removal reasons include that the procedure was no longer required (eg patient had their procedure in a private hospital), the patient was non-contactable (eg as part of audit procedures to check whether the patient still required their surgery), or that the database entry was incorrect (eg a duplicate case).