



Government of **Western Australia**
Department of **Health**
Public Health and Clinical Services

The 14th Report of the Perinatal and Infant Mortality Committee of Western Australia for deaths in the triennium 2008-2010: Supplementary tables

The 14th Report of the Perinatal and Infant Mortality Committee of Western Australia for deaths in the triennium 2008-2010

Public Health and Clinical Services Division

Department of Health, WA

Suggested citation

Lacey B, Ballestas T, on behalf of the Perinatal and Infant Mortality Committee of Western Australia (2014). The 14th Report of the Perinatal and Infant Mortality Committee of Western Australia for deaths in the triennium 2008-2010: Supplementary tables. Perth: Department of Health WA.

Members of the Perinatal and Infant Mortality Committee of Western Australia in 2013-2014 were:

Permanent members

Prof John Newnham, Chair of Committee

Dr Noel French, acting Deputy

Dr Andrew Warwyk

Dr Corrado Minutillo

Dr Ian Taylor

Prof Karen Edmond (from December 2013)

Dr Carol Bower (until November 2013)

Provisional members

Dr Michael Gannon

Dr Warren Andrew Thyer

Dr Keith Meadows

Ms Louise Keyes

Co-opted members

Dr Adrian Charles

Investigators

Dr Keren Witcombe

Dr Christine Marsack

Dr Patrick Pemberton

Dr Christopher Gunnell

Dr Ronald Hagan

Acknowledgements

This report would not have been possible without the assistance of the following people. Their contributions are greatly appreciated.

Dr Catherine Douglas

Mr Alex Xiao

Dr Charles Watson

Dr Revle Bangor-Jones

Ms Vivien Gee

Mr Alan Joyce

Ms Maureen Hutchinson

Ms Shannon Carter

Mr Peter Somerford

Mr Brian Stanley

Tables

Table 1: Perinatal mortality in Australia 2008-2010, by state*	7
Table 2: Perinatal mortality in Western Australia 1990-2010	9
Table 3: Perinatal mortality in Western Australia 1990-2010 in the Aboriginal population.....	11
Table 4: Perinatal mortality in Western Australia 1990-2010 in the non-Aboriginal population	12
Table 5: Perinatal mortality in Western Australia 2008-2010, by health service region.....	14
Table 6: Perinatal mortality in Western Australia 2008-2010, by maternal socio-economic status.....	16
Table 7: Perinatal mortality in Western Australia 2008-2010, by maternal ethnicity	18
Table 8: Perinatal mortality in Western Australia 2008-2010, by maternal age	20
Table 9: Perinatal mortality in Western Australia 2008-2010, by parity.....	22
Table 10: Perinatal mortality in Western Australia 2008-2010, by plurality.....	24
Table 11: Perinatal mortality in Western Australia 2008-2010, by gestational age at birth....	26
Table 12: Perinatal mortality in Western Australia 2008-2010, by birthweight	28
Table 13: Perinatal mortality in Western Australia 2008-2010, by cause of death (PSANZ-PDC).....	30
Table 14: Stillbirths in Western Australia 2008-2010, by cause of death (PSANZ-PDC) and medical preventability score	33
Table 15: Neonatal mortality in Western Australia 2008-2010, by cause of death (PSANZ-PDC) and medical preventability score.....	34
Table 16: Perinatal mortality in Western Australia 2008-2010, by cause of death (PSANZ-PDC) and medical preventability score.....	35
Table 17: Aboriginal population: perinatal mortality in Western Australia 2008-2010, by cause of death (PSANZ-PDC)	36
Table 18: Relative risks for perinatal mortality rate for Aboriginal population relative to non-Aboriginal population in Western Australia 2008-2010, by cause of death (PSANZ-PDC)....	38
Table 19: Infant mortality in Australia 2008-2010, by state*	40
Table 20: Infant mortality in Western Australia 1990-2010.....	41
Table 21: Infant mortality in Western Australia 1990-2010 in the Aboriginal population	43
Table 22: Infant mortality in Western Australia 1990-2010 in the non-Aboriginal population	44
Table 23: Infant mortality in Western Australia 2008-2010, by health service region	46
Table 24: Infant mortality in Western Australia 2008-2010, by maternal socio-economic status.....	48
Table 25: Infant mortality in Western Australia 2008-2010, by maternal ethnicity	50
Table 26: Infant mortality in Western Australia 2008-2010, by maternal age.....	52
Table 27: Infant mortality in Western Australia 2008-2010, by parity	54
Table 28: Infant mortality in Western Australia 2008-2010, by plurality	56
Table 29: Infant mortality in Western Australia 2008-2010, by gestational age at birth.....	58
Table 30: Infant mortality in Western Australia 2008-2010, by birthweight.....	60
Table 31: Infant mortality in Western Australia 2008-2010, by cause of death (PSANZ-PDC)	62
Table 32: Infant mortality in Western Australia 2008-2010, by cause of death (PSANZ-NDC)	65

Table 33: Neonatal mortality in Western Australia 2008-2010, by cause of death (PSANZ-NDC) and medical preventability score	68
Table 34: Infant mortality in Western Australia 2008-2010, by cause of death (PSANZ-NDC) and preventability score	69
Table 35: Aboriginal population: infant mortality in Western Australia 2008-2010, by cause of death (PSANZ-PDC).....	70
Table 36: Relative risks for infant mortality rate for Aboriginal population relative to non-Aboriginal population in Western Australia 2008-2010, by cause of death (PSANZ-PDC)....	72
Table 37: Aboriginal population: infant mortality in Western Australia 2008-2010, by cause of death (PSANZ-NDC)	73
Table 38: Relative risks for infant mortality rate for Aboriginal population relative to non-Aboriginal population in Western Australia 2008-2010, by cause of death (PSANZ-NDC)....	75
Table 39: Stillbirths in Western Australia 2000-2010, by cause of death (PSANZ-PDC)	77
Table 40: Neonatal mortality in Western Australia 2000-2010, by cause of death (PSANZ-PDC).....	78
Table 41: Perinatal mortality in Western Australia 2000-2010, by cause of death (PSANZ-PDC).....	79
Table 42: Neonatal mortality in Western Australia 2000-2010, by cause of death (PSANZ-NDC)	80
Table 43: Postneonatal mortality in Western Australia 2000-2010, by cause of death (PSANZ-NDC).....	81
Table 44: Infant mortality in Western Australia 2000-2010, by cause of death (PSANZ-NDC)	82
Table 45: Cases Investigated: Stillbirths in Western Australia 2002-2010, by cause of death (PSANZ-PDC).....	83
Table 46: Cases Investigated: Neonatal mortality in Western Australia 2002-2010, by cause of death (PSANZ-PDC)	84
Table 47: Cases Investigated: Perinatal mortality in Western Australia 2002-2010, by cause of death (PSANZ-PDC)	85
Table 48: Cases investigated: Neonatal mortality in Western Australia 2002-2010, by cause of death (PSANZ-NDC).....	86
Table 49: Cases investigated: Postneonatal mortality in Western Australia 2002-2010, by cause of death (PSANZ-NDC)	87
Table 50: Cases investigated: Infant mortality in Western Australia 2002-2010, by cause of death (PSANZ-NDC)	88

Figures

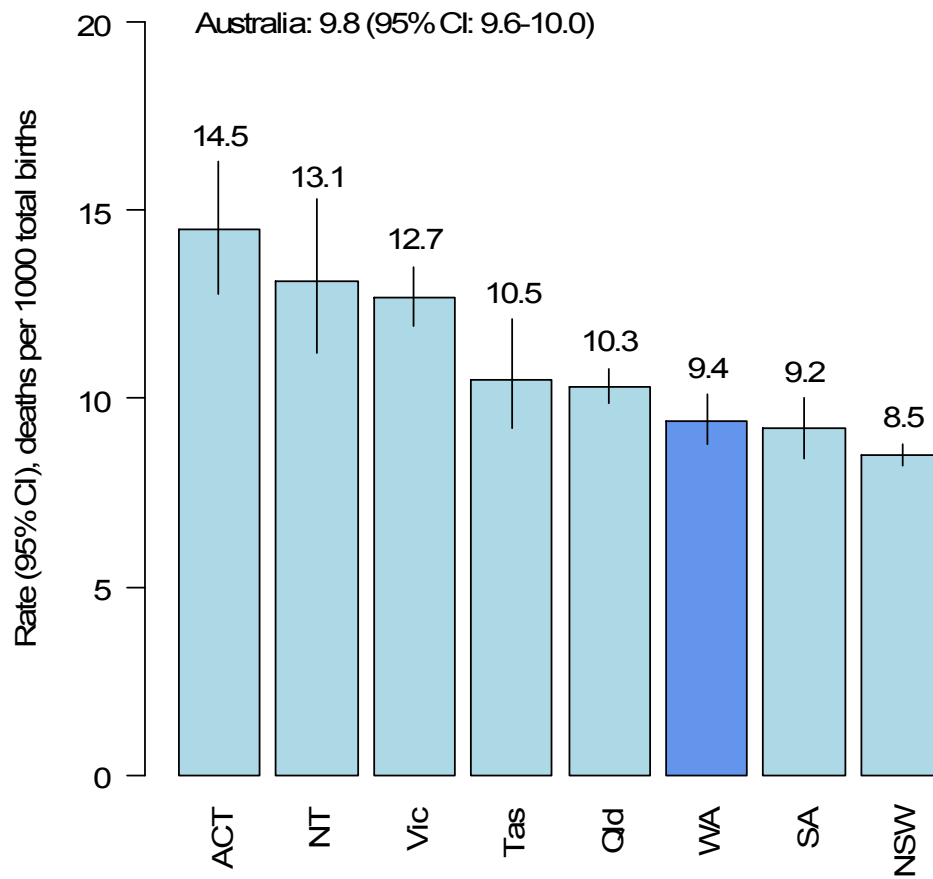
Figure 1: Perinatal mortality in Australia 2008-2010, by state*	8
Figure 2: Perinatal mortality in Western Australia 1990-2010.....	10
Figure 3: Perinatal mortality in Western Australia 1990-2010 in the Aboriginal and the non-Aboriginal population	13
Figure 4: Perinatal mortality in Western Australia 2008-2010, by health service region	15
Figure 5: Perinatal mortality in Western Australia 2008-2010, by maternal socio-economic status.....	17
Figure 6: Perinatal mortality in Western Australia 2008-2010, by maternal ethnicity.....	19
Figure 7: Perinatal mortality in Western Australia 2008-2010, by maternal age.....	21
Figure 8: Perinatal mortality in Western Australia 2008-2010, by parity	23
Figure 9: Perinatal mortality in Western Australia 2008-2010, by plurality	25
Figure 10: Perinatal mortality in Western Australia 2008-2010, by gestational age at birth..	27
Figure 11: Perinatal mortality in Western Australia 2008-2010, by birthweight	29
Figure 12: Perinatal mortality rate in Western Australia 2008-2010, by cause of death (PSANZ-PDC).....	31
Figure 13: Number of perinatal deaths in Western Australia 2008-2010, by cause of death (PSANZ-PDC).....	32
Figure 14: Aboriginal population: perinatal mortality rate in Western Australia 2008-2010, by cause of death (PSANZ-PDC)	37
Figure 15: Infant mortality in Western Australia 1990-2010	42
Figure 16: Infant mortality in Western Australia 1990-2010 in the Aboriginal and non-Aboriginal population	45
Figure 17: Infant mortality in Western Australia 2008-2010, by health service region.....	47
Figure 18: Infant mortality in Western Australia 2008-2010, by maternal socio-economic status.....	49
Figure 19: Infant mortality in Western Australia 2008-2010, by maternal ethnicity	51
Figure 20: Infant mortality in Western Australia 2008-2010, by maternal age	53
Figure 21: Infant mortality in Western Australia 2008-2010, by parity.....	55
Figure 22: Infant mortality in Western Australia 2008-2010, by plurality.....	57
Figure 23: Infant mortality in Western Australia 2008-2010, by gestational age at birth	59
Figure 24: Infant mortality in Western Australia 2008-2010, by birthweight	61
Figure 25: Infant mortality rate in Western Australia 2008-2010, by cause of death (PSANZ-PDC).....	63
Figure 26: Number of infant deaths in Western Australia 2008-2010, by cause of death (PSANZ-PDC).....	64
Figure 27: Infant mortality rate in Western Australia 2008-2010, by cause of death (PSANZ-NDC)	66
Figure 28: Number of infant deaths in Western Australia 2008-2010, by cause of death (PSANZ-NDC).....	67
Figure 29: Aboriginal population: infant mortality rate in Western Australia 2008-2010, by cause of death (PSANZ-PDC)	71
Figure 30: Aboriginal population: infant mortality rate in Western Australia 2008-2010, by cause of death (PSANZ-NDC)	74

Table 1: Perinatal mortality in Australia 2008-2010, by state*

State	Total births	Live births	Stillbirths		Neonatal mortality			Perinatal mortality		
			N	Rate (95% CI) per 1000 births	N	Rate (95% CI) per 1000 live birth	N	Rate (95% CI) per 1000 births		
WA	93158	92 481	677	7.3 (6.8-7.8)	202	2.2 (1.9-2.5)	879	9.4 (8.8-10.1)		
NSW	289 256	287 519	1 737	6.0 (5.7-6.3)	724	2.5 (2.3-2.7)	2 461	8.5 (8.2-8.8)		
Vic	72 546	71 843	703	9.7 (9.0-10.4)	215	3.0 (2.6-3.4)	918	12.7 (11.9-13.5)		
Qld	185 473	184 229	1 244	6.7 (6.3-7.1)	674	3.7 (3.4-3.9)	1 918	10.3 (9.9-10.8)		
SA	59 868	59 458	410	6.8 (6.2-7.5)	139	2.3 (2.0-2.8)	549	9.2 (8.4-10.0)		
Tas	18 961	18 809	152	8.0 (6.8-9.4)	48	2.6 (1.9-3.4)	200	10.5 (9.2-12.1)		
ACT	17 502	17 340	162	9.3 (7.9-10.8)	91	5.2 (4.3-6.4)	253	14.5 (12.8-16.3)		
NT	11 636	11 531	105	9.0 (7.5-10.9)	47	4.1 (3.1-5.4)	152	13.1 (11.2-15.3)		
Overall	748 400	743 209	5 191	6.9 (6.8-7.1)	2 142	2.9 (2.8-3.0)	7 333	9.8 (9.6-10.0)		

* Source: Australia's mothers and babies reports 2008-2010, AIHW National Perinatal Epidemiology and Statistics Unit. Rate for Victoria is for 2008 only; the overall rate does not included data from Victoria for 2009-10.

Figure 1: Perinatal mortality in Australia 2008-2010, by state*



* Source : Australia's mothers and babies reports 2008-2010, AIHW National Perinatal Epidemiology and Statistics Unit. Rate for Victoria is for 2008 only; the overall rate does not included data from Victoria for 2009-10.

Table 2: Perinatal mortality in Western Australia 1990-2010

Triennium	Middle year of triennium	Total births	Live births	Stillbirths		Neonatal mortality			Perinatal mortality		
				N	Rate (95% CI) per 1000 births	N	Rate (95% CI) per 1000 live births	N	Rate (95% CI) per 1000 births		
1990-1992	1991	76 352	75 818	534	7.0 (6.4-7.6)	299	3.9 (3.5-4.4)	833	10.9 (10.2-11.7)		
1993-1995	1994	76 207	75 653	554	7.3 (6.7-7.9)	248	3.3 (2.9-3.7)	802	10.5 (9.8-11.3)		
1996-1998	1997	76 528	75 994	534	7.0 (6.4-7.6)	233	3.1 (2.7-3.5)	767	10.0 (9.3-10.8)		
1999-2001	2000	75 939	75 387	552	7.3 (6.7-7.9)	215	2.9 (2.5-3.3)	767	10.1 (9.4-10.8)		
2002-2004	2003	74 995	74 449	546	7.3 (6.7-7.9)	166	2.2 (1.9-2.6)	712	9.5 (8.8-10.2)		
2005-2007	2006	85 723	85 125	598	7.0 (6.4-7.6)	195	2.3 (2.0-2.6)	793	9.3 (8.6-9.9)		
2008-2010	2009	93 158	92 480	678	7.3 (6.8-7.8)	204	2.2 (1.9-2.5)	882	9.5 (8.9-10.1)		

Figure 2: Perinatal mortality in Western Australia 1990-2010

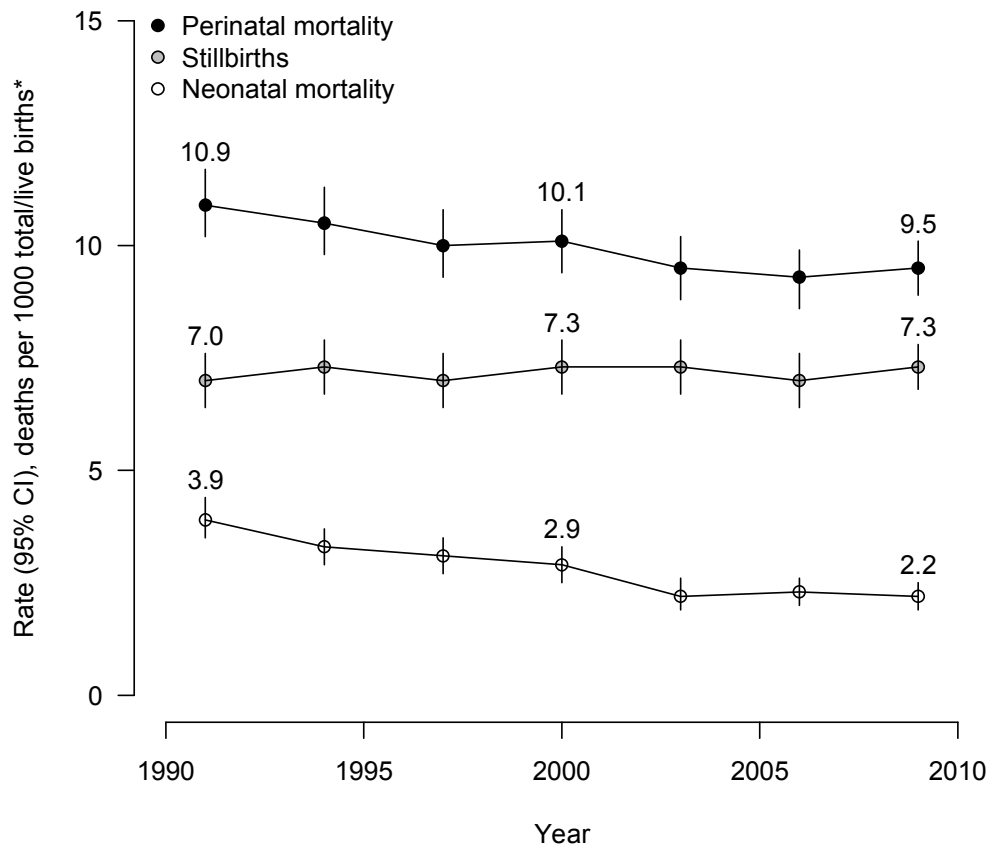


Table 3: Perinatal mortality in Western Australia 1990-2010 in the Aboriginal population

Triennium	Middle year of triennium	Total births	Live births	Stillbirths		Neonatal mortality			Perinatal mortality	
				N	Rate (95% CI) per 1000 births	N	Rate (95% CI) per 1000 live births	N	Rate (95% CI) per 1000 births	
1990-1992	1991	4479	4418	61	13.6 (10.6-17.5)	41	9.3 (6.8-12.6)	102	22.8 (18.8-27.6)	
1993-1995	1994	4375	4312	63	14.4 (11.3-18.4)	34	7.9 (5.6-11.0)	97	22.2 (18.2-27.0)	
1996-1998	1997	4548	4480	68	15.0 (11.8-18.9)	30	6.7 (4.7-9.5)	98	21.5 (17.7-26.2)	
1999-2001	2000	4889	4822	67	13.7 (10.8-17.4)	43	8.9 (6.6-12.0)	110	22.5 (18.7-27.0)	
2002-2004	2003	4796	4727	69	14.4 (11.4-18.2)	35	7.4 (5.3-10.3)	104	21.7 (17.9-26.2)	
2005-2007	2006	5357	5287	70	13.1 (10.4-16.5)	33	6.2 (4.4-8.8)	103	19.2 (15.9-23.3)	
2008-2010	2009	5204	5134	70	13.5 (10.7-17.0)	37	7.2 (5.2-9.9)	107	20.6 (17.0-24.8)	

Table 4: Perinatal mortality in Western Australia 1990-2010 in the non-Aboriginal population

Triennium	Middle year of triennium	Total births	Live births	Stillbirths		Neonatal mortality			Perinatal mortality	
				N	Rate (95% CI) per 1000 births	N	Rate (95% CI) per 1000 live births	N	Rate (95% CI) per 1000 births	
1990-1992	1991	71873	71400	473	6.6 (6.0-7.2)	258	3.6 (3.2-4.1)	731	10.2 (9.5-10.9)	
1993-1995	1994	71832	71341	491	6.8 (6.3-7.5)	214	3.0 (2.6-3.4)	705	9.8 (9.1-10.6)	
1996-1998	1997	71980	71514	466	6.5 (5.9-7.1)	203	2.8 (2.5-3.3)	669	9.3 (8.6-10.0)	
1999-2001	2000	71050	70565	485	6.8 (6.2-7.5)	172	2.4 (2.1-2.8)	657	9.2 (8.6-10.0)	
2002-2004	2003	70199	69722	477	6.8 (6.2-7.4)	131	1.9 (1.6-2.2)	608	8.7 (8.0-9.4)	
2005-2007	2006	80366	79838	528	6.6 (6.0-7.2)	162	2.0 (1.7-2.4)	690	8.6 (8.0-9.2)	
2008-2010	2009	87955	87347	608	6.9 (6.4-7.5)	167	1.9 (1.6-2.2)	775	8.8 (8.2-9.5)	

Figure 3: Perinatal mortality in Western Australia 1990-2010 in the Aboriginal and the non-Aboriginal population

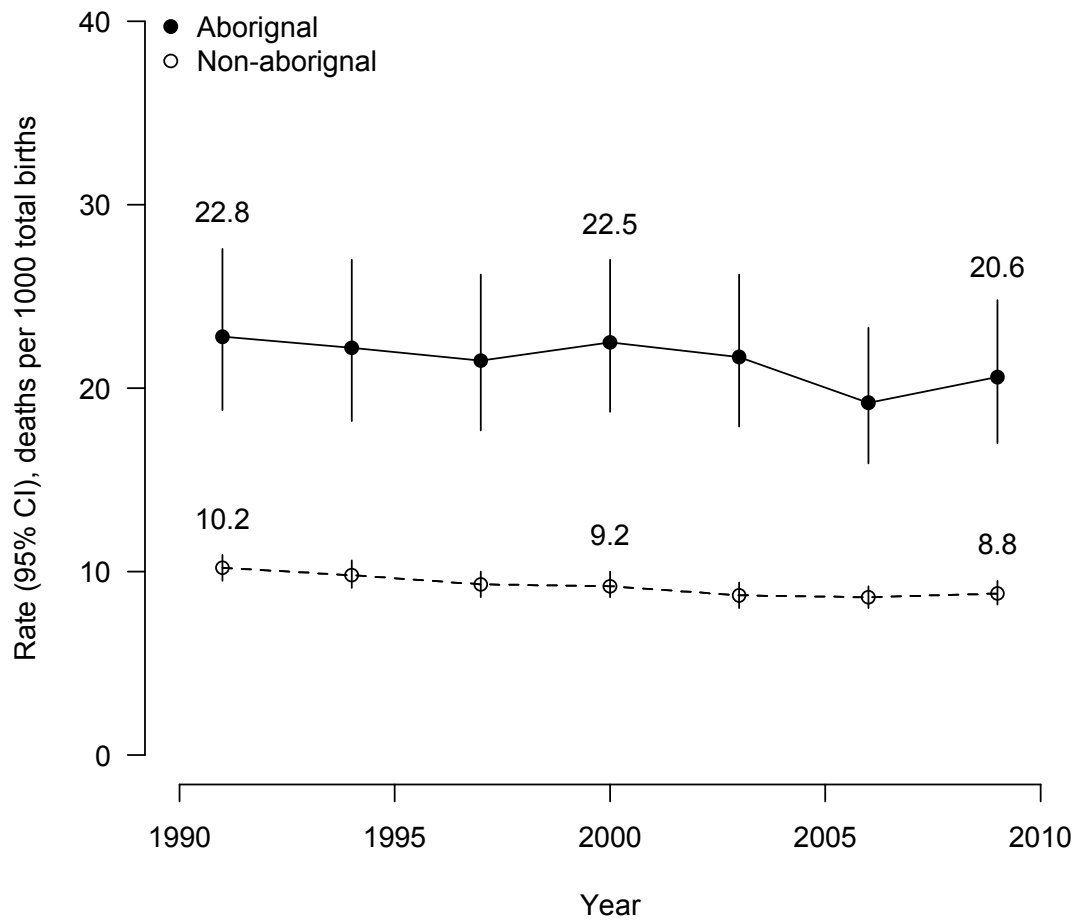


Table 5: Perinatal mortality in Western Australia 2008-2010, by health service region

Health region	Total births*	Live births	Stillbirths			Neonatal mortality			Perinatal mortality		
			N	Rate (95% CI)	per 1000 births	N	Rate (95% CI)	per live 1000 births	N	Rate (95% CI)	per 1000 births
Kimberley	2 061	2 035	26	12.6 (8.6-18.4)		8	3.9 (2.0-7.7)		34	16.5 (11.8-23.0)	
Pilbara	2 506	2 493	13	5.2 (3.0-8.9)		8	3.2 (1.6-6.3)		21	8.4 (5.5-12.8)	
Goldfields	2 870	2 837	33	11.5 (8.2-16.1)		7	2.5 (1.2-5.1)		40	13.9 (10.3-18.9)	
Midwest	2 900	2 876	24	8.3 (5.6-12.3)		7	2.4 (1.2-5.0)		31	10.7 (7.5-15.1)	
North Metro	37 361	37 112	249	6.7 (5.9-7.5)		64	1.7 (1.4-2.2)		313	8.4 (7.5-9.4)	
South Metro	33 898	33 658	240	7.1 (6.2-8.0)		84	2.5 (2.0-3.1)		324	9.6 (8.6-10.7)	
Wheatbelt	2 993	2 968	25	8.4 (5.7-12.3)		8	2.7 (1.4-5.3)		33	11.0 (7.9-15.4)	
South West	6 235	6 186	49	7.9 (5.9-10.4)		12	1.9 (1.1-3.4)		61	9.8 (7.6-12.5)	
Great Southern	2 253	2 235	18	8.0 (5.1-12.6)		5	2.2 (1.0-5.2)		23	10.2 (6.8-15.3)	
Metro regions	71 259	70 770	489	6.9 (6.3-7.5)		148	2.1 (1.8-2.5)		637	8.9 (8.3-9.7)	
WACHS regions	21 818	21 630	188	8.6 (7.5-9.9)		55	2.5 (2.0-3.3)		243	11.1 (9.8-12.6)	
Total	93 077	92 400	677	7.3 (6.8-7.8)		203	2.2 (1.9-2.5)		880	9.5 (8.9-10.1)	

* There were 81 births for which it was not possible to assign a health region as the mother's usual residence was outside of WA; there was one stillbirth and one neonatal death in this group.

Figure 4: Perinatal mortality in Western Australia 2008-2010, by health service region

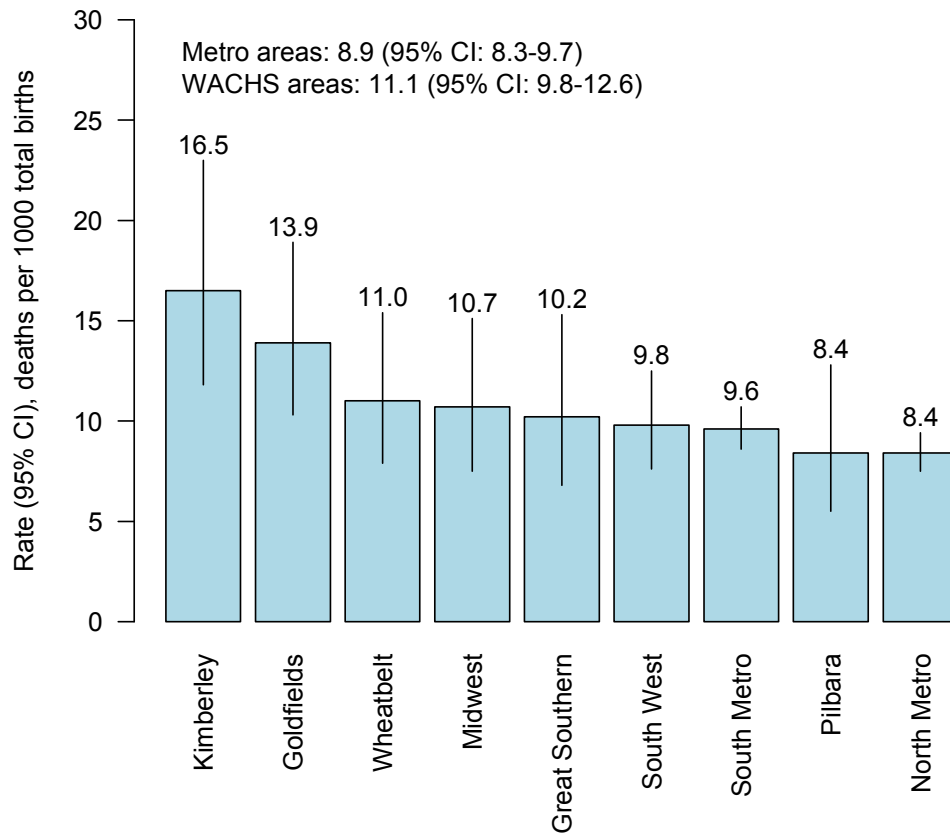


Table 6: Perinatal mortality in Western Australia 2008-2010, by maternal socio-economic status

Socioeconomic status, as indicated by quintile of SEIFA score of mother's postcode *	Total births [†]	Live births	Stillbirths		Neonatal mortality		Perinatal mortality	
			N	Rate (95% CI) per 1000 births	N	Rate (95% CI) per 1000 live births	N	Rate (95% CI) per 1000 births
Quintile 1 (most deprived)	11 677	11 548	129	11.0 (9.3-13.1)	33	2.9 (2.0-4.0)	162	13.9 (11.9-16.2)
Quintile 2	19 414	19 263	151	7.8 (6.6-9.1)	62	3.2 (2.5-4.1)	213	11.0 (9.6-12.5)
Quintile 3	19 757	19 615	142	7.2 (6.1-8.5)	49	2.5 (1.9-3.3)	191	9.7 (8.4-11.1)
Quintile 4	17 506	17 386	120	6.9 (5.7-8.2)	19	1.1 (0.7-1.7)	139	7.9 (6.7-9.4)
Quintile 5 (least deprived)	24 723	24 588	135	5.5 (4.6-6.5)	40	1.6 (1.2-2.2)	175	7.1 (6.1-8.2)
Total	93 077	92 400	677	7.3 (6.8-7.8)	203	2.2 (1.9-2.5)	880	9.5 (8.9-10.1)

* Socio-Economic Indexes for Areas (SEIFA) is a product developed by the ABS that ranks areas according to relative socio-economic advantage and disadvantage; quintile of areas within WA, only.

[†] There were 81 births for which it was not possible to assign a SEIFA score as the mother's usual residence was outside of WA; there was one stillbirth and one neonatal death in this group.

Figure 5: Perinatal mortality in Western Australia 2008-2010, by maternal socio-economic status

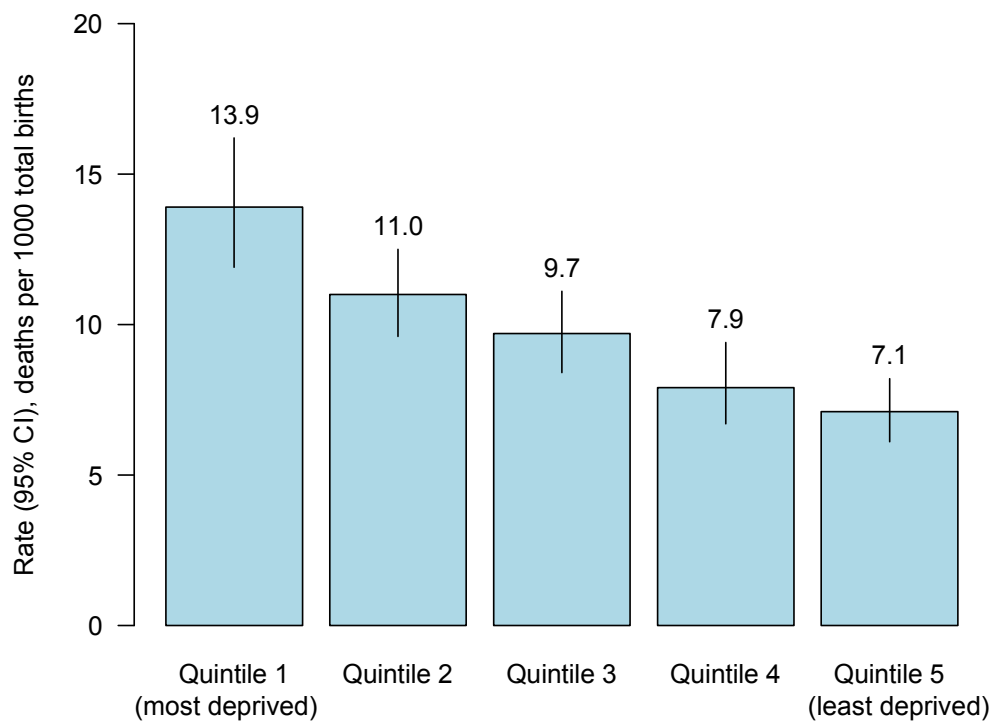


Table 7: Perinatal mortality in Western Australia 2008-2010, by maternal ethnicity

Maternal ethnicity	Total births	Live births	Stillbirths		Neonatal mortality		Perinatal mortality	
			N	Rate (95% CI) per 1000 births	N	Rate (95% CI) per 1000 live births	N	Rate (95% CI) per 1000 births
Caucasian	73 460	72 969	491	6.7 (6.1-7.3)	128	1.8 (1.5-2.1)	619	8.4 (7.8-9.1)
Aboriginal	5 204	5 134	70	13.5 (10.7-17.0)	37	7.2 (5.2-9.9)	107	20.6 (17.0-24.8)
Asian/Indian	7 574	7 516	58	7.7 (5.9-9.9)	20	2.7 (1.7-4.1)	78	10.3 (8.3-12.8)
Other	6 920	6 861	59	8.5 (6.6-11.0)	19	2.8 (1.8-4.3)	78	11.3 (9.0-14.0)
Total	93 158	92 480	678	7.3 (6.8-7.8)	204	2.2 (1.9-2.5)	882	9.5 (8.9-10.1)

Figure 6: Perinatal mortality in Western Australia 2008-2010, by maternal ethnicity

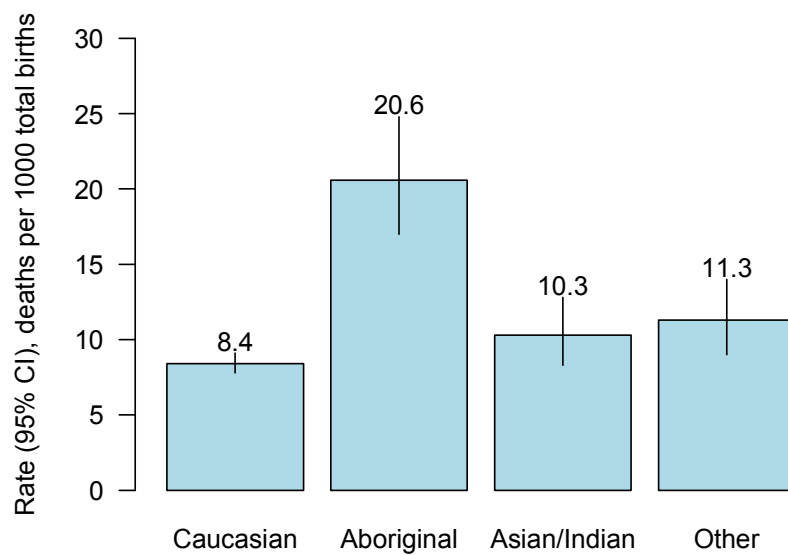


Table 8: Perinatal mortality in Western Australia 2008-2010, by maternal age

Maternal age, years	Mean of group, years	Total births	Live births	Stillbirths		Neonatal mortality		Perinatal mortality	
				N	Rate (95% CI) per 1000 births	N	Rate (95% CI) per 1000 live births	N	Rate (95% CI) per 1000 births
<20	17.9	4 385	4 351	34	7.8 (5.6-10.8)	18	4.1 (2.6-6.5)	52	11.9 (9.1-15.5)
20-24	22.2	14 593	14 459	134	9.2 (7.8-10.9)	41	2.8 (2.1-3.8)	175	12.0 (10.3-13.9)
25-29	27.2	25 768	25 613	155	6.0 (5.1-7.0)	59	2.3 (1.8-3.0)	214	8.3 (7.3-9.5)
30-34	31.9	28 644	28 458	186	6.5 (5.6-7.5)	52	1.8 (1.4-2.4)	238	8.3 (7.3-9.4)
35-39	36.6	16 451	16 317	134	8.1 (6.9-9.6)	25	1.5 (1.0-2.3)	159	9.7 (8.3-11.3)
≥40	41.2	3 317	3 282	35	10.6 (7.6-14.6)	9	2.7 (1.4-5.2)	44	13.3 (9.9-17.8)
Total	29.6	93 158	92 480	678	7.3 (6.8-7.8)	204	2.2 (1.9-2.5)	882	9.5 (8.9-10.1)

Figure 7: Perinatal mortality in Western Australia 2008-2010, by maternal age

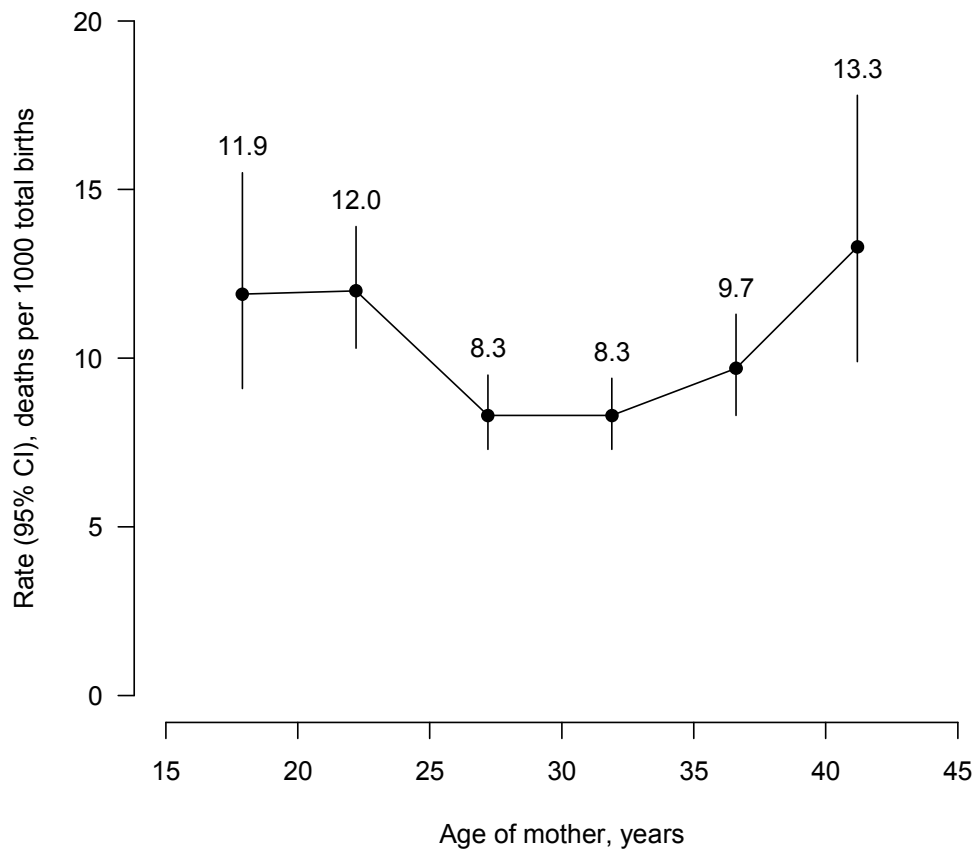


Table 9: Perinatal mortality in Western Australia 2008-2010, by parity

Parity	Total births	Live births	Stillbirths		Neonatal mortality			Perinatal mortality		
			N	Rate (95% CI) per 1000 births	N	Rate (95% CI) per 1000 live births	N	Rate (95% CI) per 1000 births		
Primipara	28 423	28 205	218	7.7 (6.7-8.8)	65	2.3 (1.8-2.9)	283	10.0 (8.9-11.2)		
Multipara	64 735	64 275	460	7.1 (6.5-7.8)	139	2.2 (1.8-2.6)	599	9.3 (8.5-10.0)		
Total	93 158	92 480	678	7.3 (6.8-7.8)	204	2.2 (1.9-2.5)	882	9.5 (8.9-10.1)		

Figure 8: Perinatal mortality in Western Australia 2008-2010, by parity

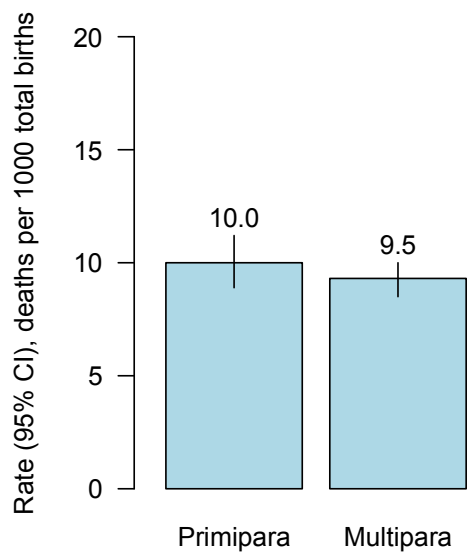


Table 10: Perinatal mortality in Western Australia 2008-2010, by plurality

Plurality	Total births	Live births	Stillbirths		Neonatal mortality			Perinatal mortality	
			N	Rate (95% CI) per 1000 births	N	Rate (95% CI) per 1000 live births	N	Rate (95% CI) per 1000 births	
Singletons	90 534	89 913	621	6.9 (6.3-7.4)	174	1.9 (1.7-2.2)	795	8.8 (8.2-9.4)	
Twins	2 584	2 531	53	20.5 (15.7-26.7)	27	10.7 (7.3-15.5)	80	31.0 (24.9-38.4)	
Higher order multiples	40	36	4	100.0 (39.6-230.5)	3	83.3 (28.7-218.3)	7	175.0 (87.5-319.5)	
Total	93 158	92 480	678	7.3 (6.8-7.8)	204	2.2 (1.9-2.5)	882	9.5 (8.9-10.1)	

Figure 9: Perinatal mortality in Western Australia 2008-2010, by plurality

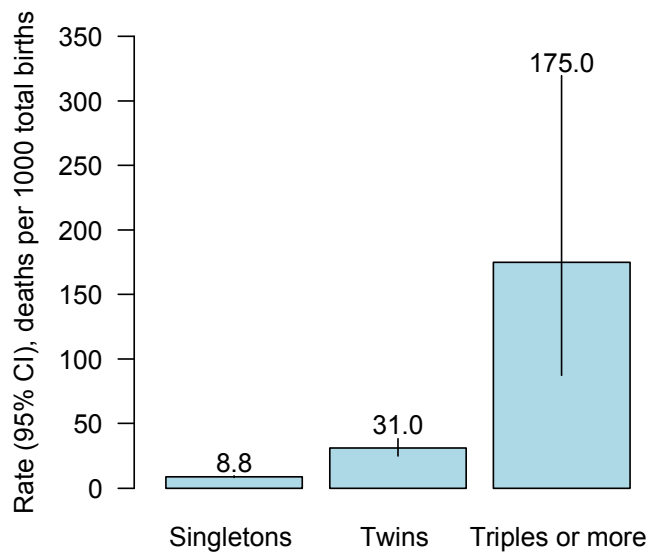


Table 11: Perinatal mortality in Western Australia 2008-2010, by gestational age at birth

Gestational age at birth, weeks	Total births	Live births	Stillbirths		Neonatal mortality			Perinatal mortality		
			N	Rate (95% CI) per 1000 births	N	Rate (95% CI) per 1000 live births	N	Rate (95% CI) per 1000 births		
20-27	807	404	403	499.4 (465.0-533.8)	94	232.7 (194.1-276.3)	497	615.9 (581.8-648.8)		
28-31	753	686	67	89.0 (70.7-111.5)	17	24.8 (15.5-39.3)	84	111.6 (91.0-136.0)		
32-36	6 472	6 390	82	12.7 (10.2-15.7)	27	4.2 (2.9-6.1)	109	16.8 (14.0-20.3)		
37-41	84 576	84 451	125	1.5 (1.2-1.8)	66	0.8 (0.6-1.0)	191	2.3 (2.0-2.6)		
≥42	550	549	1	1.8 (0.3-10.2)	0	0.0 (0.0-6.9)	1	1.8 (0.3-10.2)		
Total	93 158	92 480	678	7.3 (6.8-7.8)	204	2.2 (1.9-2.5)	882	9.5 (8.9-10.1)		

Figure 10: Perinatal mortality in Western Australia 2008-2010, by gestational age at birth

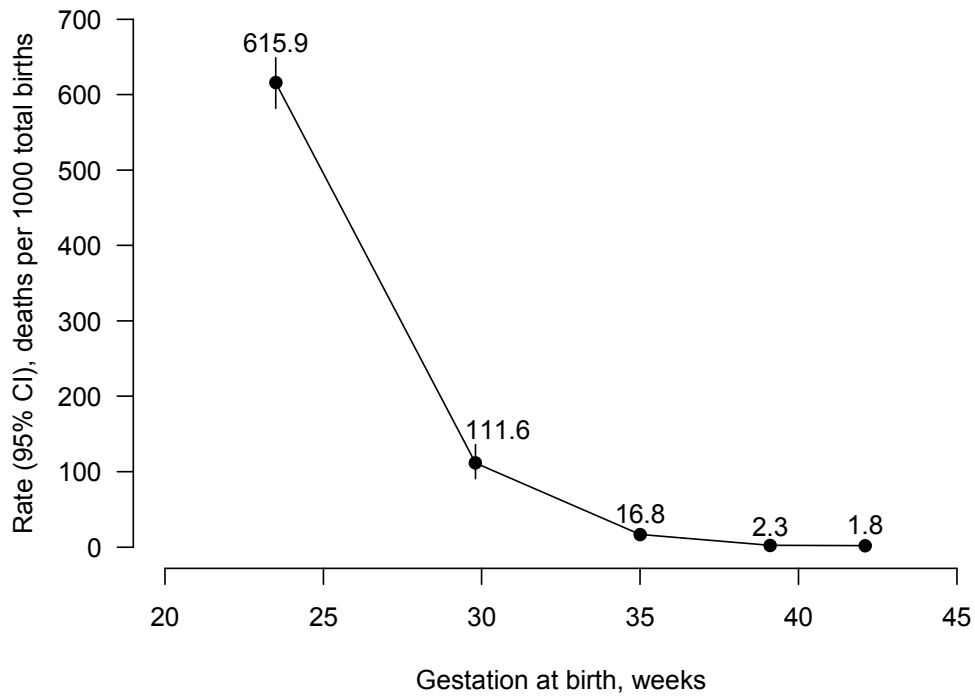


Table 12: Perinatal mortality in Western Australia 2008-2010, by birthweight

Birth-weight, kg	Mean of group, kg	Total births*	Live births	Stillbirths			Neonatal mortality			Perinatal mortality		
				N	Rate (95% CI)	per 1000 births	N	Rate (95% CI)	per live 1000 births	N	Rate (95% CI)	per 1000 births
<1.5	0.87	1 408	928	480	340.9	(316.6-366.1)	106	114.2	(95.3-136.3)	586	416.2	(390.7-442.1)
1.5-<2.5	2.17	4 818	4 747	71	14.7	(11.7-18.5)	30	6.3	(4.4-9.0)	101	21.0	(17.3-25.4)
2.5-<3.0	2.80	14 567	14 525	42	2.9	(2.1-3.9)	29	2.0	(1.4-2.9)	71	4.9	(3.9-6.1)
3.0-<4.0	3.47	62 379	62 308	71	1.1	(0.9-1.4)	34	0.5	(0.4-0.8)	105	1.7	(1.4-2.0)
≥4.0	4.25	9 985	9 971	14	1.4	(0.8-2.4)	5	0.5	(0.2-1.2)	19	1.9	(1.2-3.0)
Total	3.34	93 157	92 480	678	7.3	(6.8-7.8)	204	2.2	(1.9-2.5)	882	9.5	(8.9-10.1)

* The birthweight of one baby was unknown; this baby was not reported to have died in the perinatal period.

Figure 11: Perinatal mortality in Western Australia 2008-2010, by birthweight

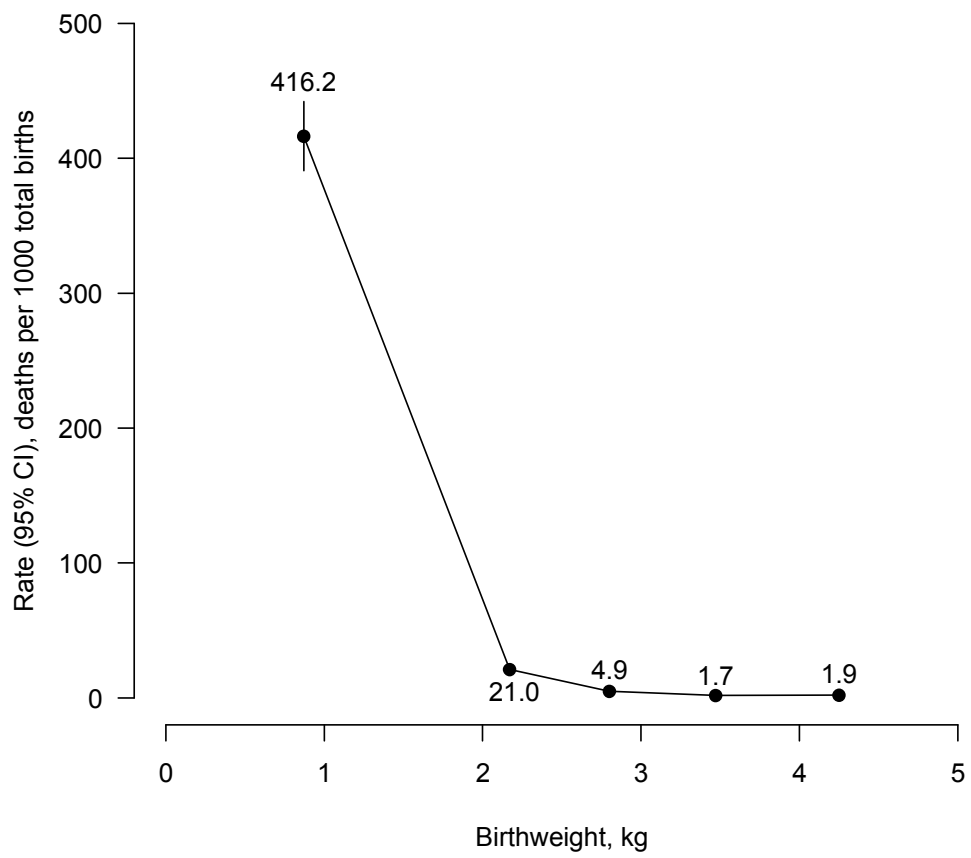


Table 13: Perinatal mortality in Western Australia 2008-2010, by cause of death (PSANZ-PDC)

	Stillbirths				Neonatal mortality				Perinatal mortality			
	N	%	Rate (95% CI) per 1000 births		N	%	Rate (95% CI) per 1000 live births		N	%	Rate (95% CI) per 1000 births	
1. Congenital abnormality	190	28.0	2.0	(1.8-2.4)	68	33.3	0.7	(0.6-0.9)	258	29.3	2.8	(2.5-3.1)
2. Perinatal infection	22	3.2	0.2	(0.2-0.4)	17	8.3	0.2	(0.1-0.3)	39	4.4	0.4	(0.3-0.6)
3. Hypertension	20	2.9	0.2	(0.1-0.3)	5	2.5	0.1	(0.0-0.1)	25	2.8	0.3	(0.2-0.4)
4. Antepartum haemorrhage	25	3.7	0.3	(0.2-0.4)	11	5.4	0.1	(0.1-0.2)	36	4.1	0.4	(0.3-0.5)
5. Maternal conditions	38	5.6	0.4	(0.3-0.6)	4	2.0	0.0	(0.0-0.1)	42	4.8	0.5	(0.3-0.6)
6. Specific perinatal conditions	64	9.4	0.7	(0.5-0.9)	7	3.4	0.1	(0.0-0.2)	71	8.0	0.8	(0.6-1.0)
7. Hypoxic peripartum death	15	2.2	0.2	(0.1-0.3)	12	5.9	0.1	(0.1-0.2)	27	3.1	0.3	(0.2-0.4)
8. Fetal growth restriction	60	8.8	0.6	(0.5-0.8)	5	2.5	0.1	(0.0-0.1)	65	7.4	0.7	(0.5-0.9)
9. Spontaneous preterm	166	24.5	1.8	(1.5-2.1)	61	29.9	0.7	(0.5-0.8)	227	25.7	2.4	(2.1-2.8)
10. Unexplained antepartum death	77	11.4	0.8	(0.7-1.0)	0	0.0	0.0	(0.0-0.0)	77	8.7	0.8	(0.7-1.0)
11. No obstetric antecedent	1	0.1	0.0	(0.0-0.1)	14	6.9	0.2	(0.1-0.3)	15	1.7	0.2	(0.1-0.3)
Total	678	100.0	7.3	(6.8-7.8)	204	100.0	2.2	(1.9-2.5)	882	100.0	9.5	(8.9-10.1)

Figure 12: Perinatal mortality rate in Western Australia 2008-2010, by cause of death (PSANZ-PDC)

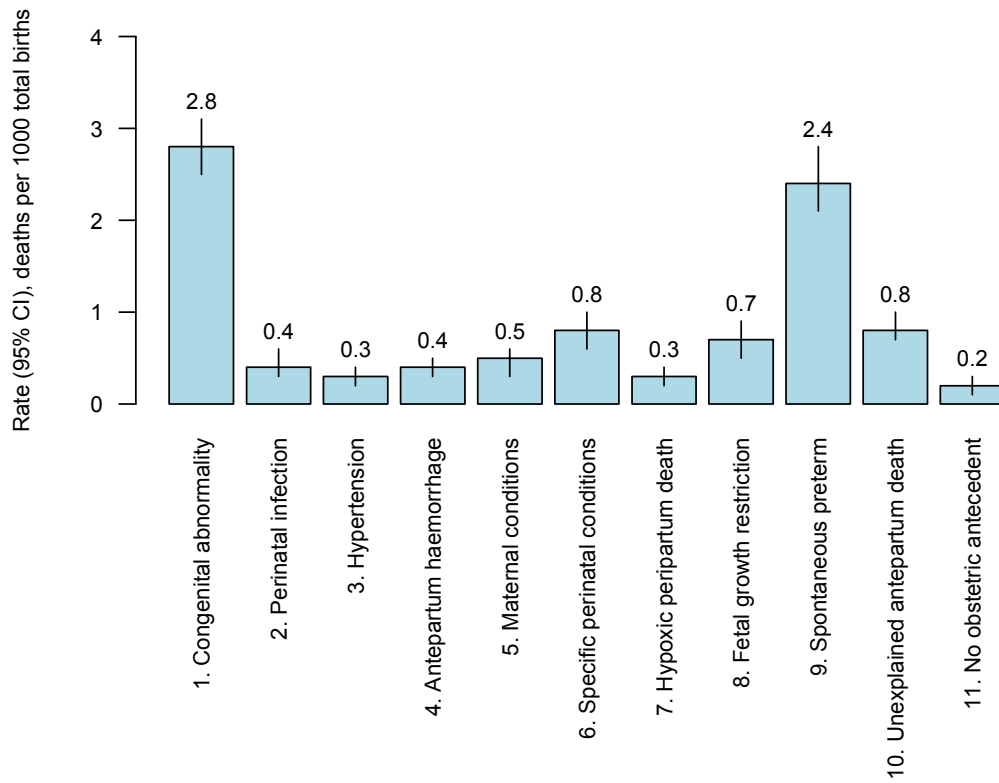


Figure 13: Number of perinatal deaths in Western Australia 2008-2010, by cause of death (PSANZ-PDC)

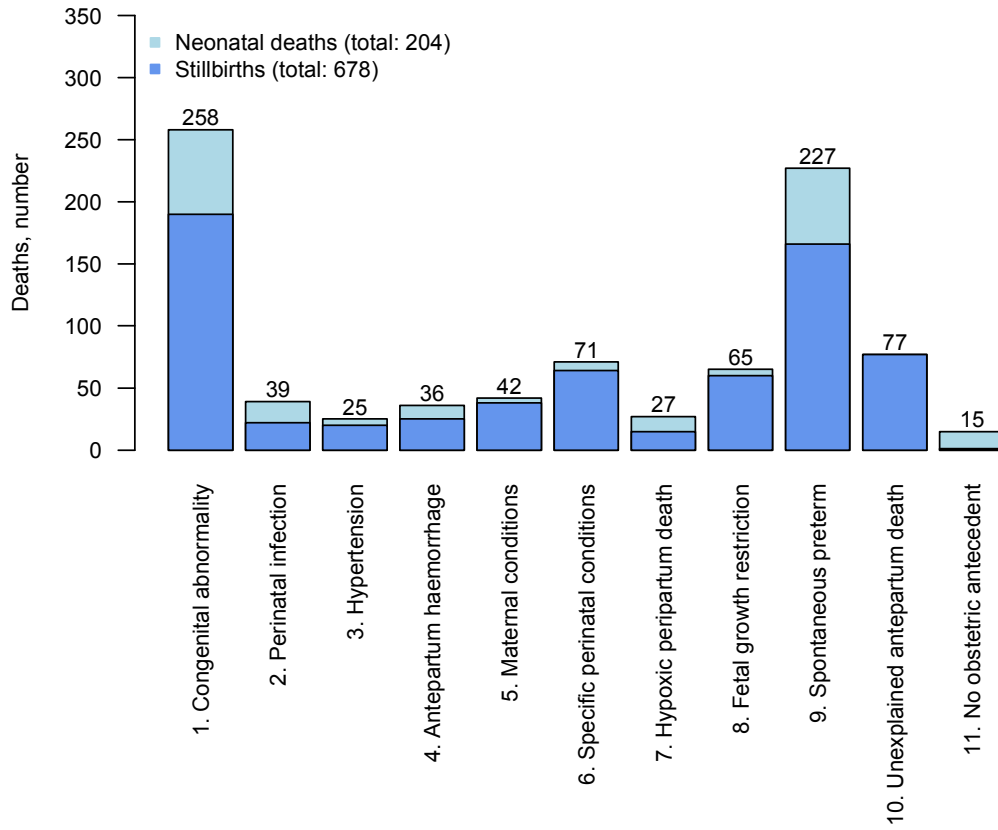


Table 14: Stillbirths in Western Australia 2008-2010, by cause of death (PSANZ-PDC) and medical preventability score

Cause of death	Stillbirths <26 weeks gestation	Investigated stillbirths ≥26 weeks gestations, by preventability score							Total
		1	2	3	4	5	6	Not scored	
1. Congenital abnormality	150	33	0	0	0	0	0	5	188
2. Perinatal infection	5	16	1	0	0	0	0	0	22
3. Hypertension	3	13	2	1	1	0	0	0	20
4. Antepartum haemorrhage	5	20	0	0	0	0	0	0	25
5. Maternal conditions	5	24	3	3	2	1	0	0	38
6. Specific perinatal conditions	22	41	0	0	0	0	0	0	63
7. Hypoxic peripartum death	0	8	2	1	0	4	0	0	15
8. Fetal growth restriction	16	40	1	0	2	0	0	1	60
9. Spontaneous preterm	163	1	0	0	0	0	0	0	164
10. Unexplained antepartum death	1	71	2	2	1	0	0	0	77
11. No obstetric antecedent	0	1	0	0	0	0	0	0	1
Total	370	268	11	7	6	5	0	6	673*

*Excludes five stillbirths ≥26 weeks gestations that were not investigated.

Table 15: Neonatal mortality in Western Australia 2008-2010, by cause of death (PSANZ-PDC) and medical preventability score

Cause of death	Neonatal deaths <26 weeks gestation	Investigated neonatal deaths ≥26 weeks gestations, by preventability score							Total
		1	2	3	4	5	6	Not scored	
1. Congenital abnormality	11	54	1	0	0	0	0	1	67
2. Perinatal infection	6	8	2	0	0	0	1	0	17
3. Hypertension	1	3	0	0	1	0	0	0	5
4. Antepartum haemorrhage	2	7	1	0	1	0	0	0	11
5. Maternal conditions	0	2	2	0	0	0	0	0	4
6. Specific perinatal conditions	0	5	0	0	1	0	1	0	7
7. Hypoxic peripartum death	0	6	2	0	3	1	0	0	12
8. Fetal growth restriction	1	3	0	1	0	0	0	0	5
9. Spontaneous preterm	58	3	0	0	0	0	0	0	61
10. Unexplained antepartum death	0	0	0	0	0	0	0	0	0
11. No obstetric antecedent	0	14	0	0	0	0	0	0	14
Total	79	105	8	1	6	1	2	1	203*

*Excludes one neonatal death ≥26 weeks gestations that was not investigated.

Table 16: Perinatal mortality in Western Australia 2008-2010, by cause of death (PSANZ-PDC) and medical preventability score

Cause of death	Perinatal deaths <26 weeks gestation	Investigated perinatal deaths ≥26 weeks gestations, by preventability score								Total
		1	2	3	4	5	6	Not scored		
1. Congenital abnormality	161	87	1	0	0	0	0	0	6	255
2. Perinatal infection	11	24	3	0	0	0	0	1	0	39
3. Hypertension	4	16	2	1	2	0	0	0	0	25
4. Antepartum haemorrhage	7	27	1	0	1	0	0	0	0	36
5. Maternal conditions	5	26	5	3	2	1	0	0	0	42
6. Specific perinatal conditions	22	46	0	0	1	0	1	0	0	70
7. Hypoxic peripartum death	0	14	4	1	3	5	0	0	0	27
8. Fetal growth restriction	17	43	1	1	2	0	0	0	1	65
9. Spontaneous preterm	221	4	0	0	0	0	0	0	0	225
10. Unexplained antepartum death	1	71	2	2	1	0	0	0	0	77
11. No obstetric antecedent	0	15	0	0	0	0	0	0	0	15
										0
Total	449	373	19	8	12	6	2	7		876

*Excludes five stillbirths and one neonatal death ≥26 weeks gestations that were not investigated.

Table 17: Aboriginal population: perinatal mortality in Western Australia 2008-2010, by cause of death (PSANZ-PDC)

	Stillbirths			Neonatal mortality			Perinatal mortality		
	N	%	Rate (95% CI) per 1000 births	N	%	Rate (95% CI) per 1000 live births	N	%	Rate (95% CI) per 1000 births
1. Congenital abnormality	15	21.4	2.9 (1.7-4.8)	8	21.6	1.6 (0.8-3.1)	23	21.5	4.4 (2.9-6.6)
2. Perinatal infection	0	0.0	0.0 (0.0-0.7)	4	10.8	0.8 (0.3-2.0)	4	3.7	0.8 (0.3-2.0)
3. Hypertension	3	4.3	0.6 (0.2-1.7)	1	2.7	0.2 (0.0-1.1)	4	3.7	0.8 (0.3-2.0)
4. Antepartum haemorrhage	6	8.6	1.2 (0.5-2.5)	2	5.4	0.4 (0.1-1.4)	8	7.5	1.5 (0.8-3.0)
5. Maternal conditions	5	7.1	1.0 (0.4-2.2)	1	2.7	0.2 (0.0-1.1)	6	5.6	1.2 (0.5-2.5)
6. Specific perinatal conditions	2	2.9	0.4 (0.1-1.4)	1	2.7	0.2 (0.0-1.1)	3	2.8	0.6 (0.2-1.7)
7. Hypoxic peripartum death	0	0.0	0.0 (0.0-0.7)	1	2.7	0.2 (0.0-1.1)	1	0.9	0.2 (0.0-1.1)
8. Fetal growth restriction	7	10.0	1.3 (0.7-2.8)	1	2.7	0.2 (0.0-1.1)	8	7.5	1.5 (0.8-3.0)
9. Spontaneous preterm	24	34.3	4.6 (3.1-6.9)	14	37.8	2.7 (1.6-4.6)	38	35.5	7.3 (5.3-10.0)
10. Unexplained antepartum death	7	10.0	1.3 (0.7-2.8)	0	0.0	0.0 (0.0-0.7)	7	6.5	1.3 (0.7-2.8)
11. No obstetric antecedent	1	1.4	0.2 (0.0-1.1)	4	10.8	0.8 (0.3-2.0)	5	4.7	1.0 (0.4-2.2)
Total	70	100.0	13.5 (10.7-17.0)	37	100.0	7.2 (5.2-9.9)	107	100.0	20.6 (17.0-24.8)

Figure 14: Aboriginal population: perinatal mortality rate in Western Australia 2008-2010, by cause of death (PSANZ-PDC)

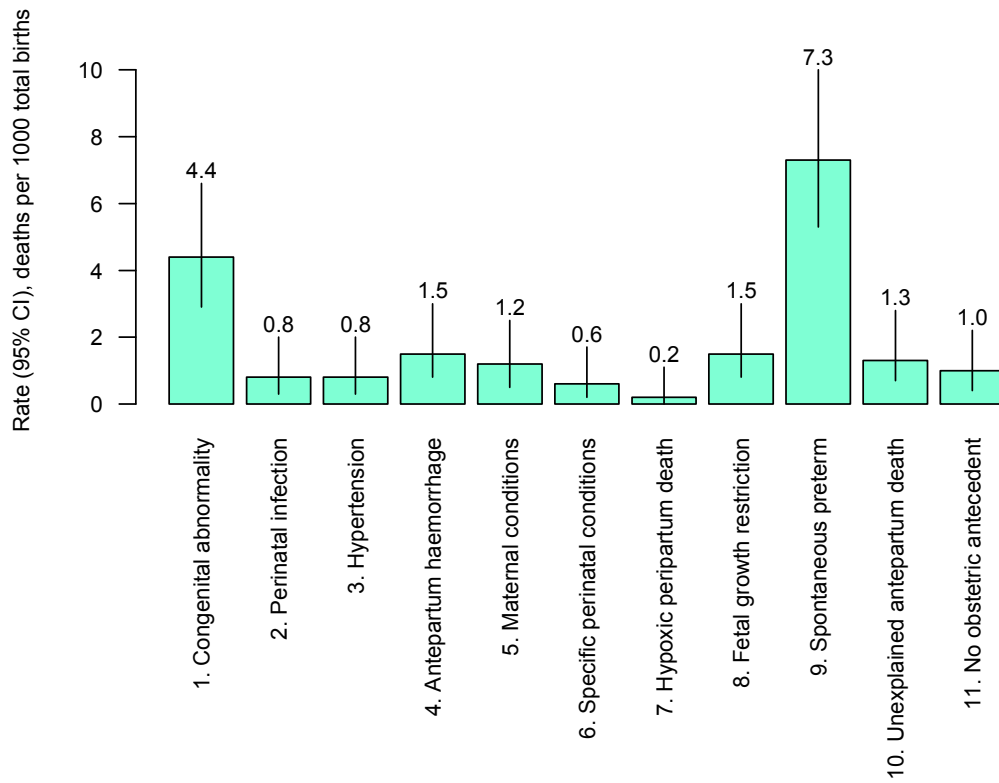


Table 18: Relative risks for perinatal mortality rate for Aboriginal population relative to non-Aboriginal population in Western Australia 2008-2010, by cause of death (PSANZ-PDC)

Cause of death (PSANZ-PDC)	Relative risk (95% CI)	p-value
1. Congenital abnormality	1.7 (1.1-2.5)	0.02
2. Perinatal infection	1.9 (0.7-5.4)	0.21
3. Hypertension	3.2 (1.1-9.4)	0.03
4. Antepartum haemorrhage	4.8 (2.2-10.6)	<0.01
5. Maternal conditions	2.8 (1.2-6.7)	0.02
6. Specific perinatal conditions	0.7 (0.2-2.4)	0.62
7. Hypoxic peripartum death	0.7 (0.1-4.8)	0.67
8. Fetal growth restriction	2.4 (1.1-5.0)	0.02
9. Spontaneous preterm	3.4 (2.4-4.8)	<0.01
10. Unexplained antepartum death	1.7 (0.8-3.7)	0.19
11. No obstetric antecedent	8.5 (2.9-24.8)	<0.01

Infant mortality

Table 19: Infant mortality in Australia 2008-2010, by state*

State	Infant mortality
	Rate (95% CI) per 1000 live births
WA	3.4 (3.1-3.8)
NSW	4.2 (4.0-4.5)
Vic	3.6 (3.4-3.9)
Qld	5.2 (4.9-5.6)
SA	3.5 (3.0-4.0)
Tas	3.8 (3.1-4.8)
ACT	4.1 (3.2-5.2)
NT	6.8 (5.5-8.5)
Total	4.2 (4.0-4.3)

* Source: Australian Bureau of Statistics (cat. No. 3302.0): deaths, Australia, 2008-2010 (confidence interval estimated from number of deaths and mortality rates given by Australian Bureau of Statistics).

Table 20: Infant mortality in Western Australia 1990-2010

Triennium	Middle year of triennium	Live births	Neonatal mortality		Post-neonatal mortality			Infant mortality	
			N	Rate (95% CI) per 1000 live births	N	Rate (95% CI) per 1000 live births	N	Rate (95% CI) per 1000 live births	
1990-1992	1991	75 818	299	3.9 (3.5-4.4)	223	2.9 (2.6-3.4)	522	6.9 (6.3-7.5)	
1993-1995	1994	75 653	248	3.3 (2.9-3.7)	157	2.1 (1.8-2.4)	405	5.4 (4.9-5.9)	
1996-1998	1997	75 994	233	3.1 (2.7-3.5)	153	2.0 (1.7-2.4)	386	5.1 (4.6-5.6)	
1999-2001	2000	75 387	215	2.9 (2.5-3.3)	124	1.6 (1.4-2.0)	339	4.5 (4.0-5.0)	
2002-2004	2003	74 449	166	2.2 (1.9-2.6)	94	1.3 (1.0-1.5)	260	3.5 (3.1-3.9)	
2005-2007	2006	85 125	195	2.3 (2.0-2.6)	115	1.4 (1.1-1.6)	310	3.6 (3.3-4.1)	
2008-2010	2009	92 480	204	2.2 (1.9-2.5)	116	1.3 (1.0-1.5)	320	3.5 (3.1-3.9)	

* Source: Australian Bureau of Statistics (cat. No. 3302.0): deaths, Australia, 1990-2010 (confidence interval estimated from number of deaths and mortality rates given by Australian Bureau of Statistics).

Figure 15: Infant mortality in Western Australia 1990-2010

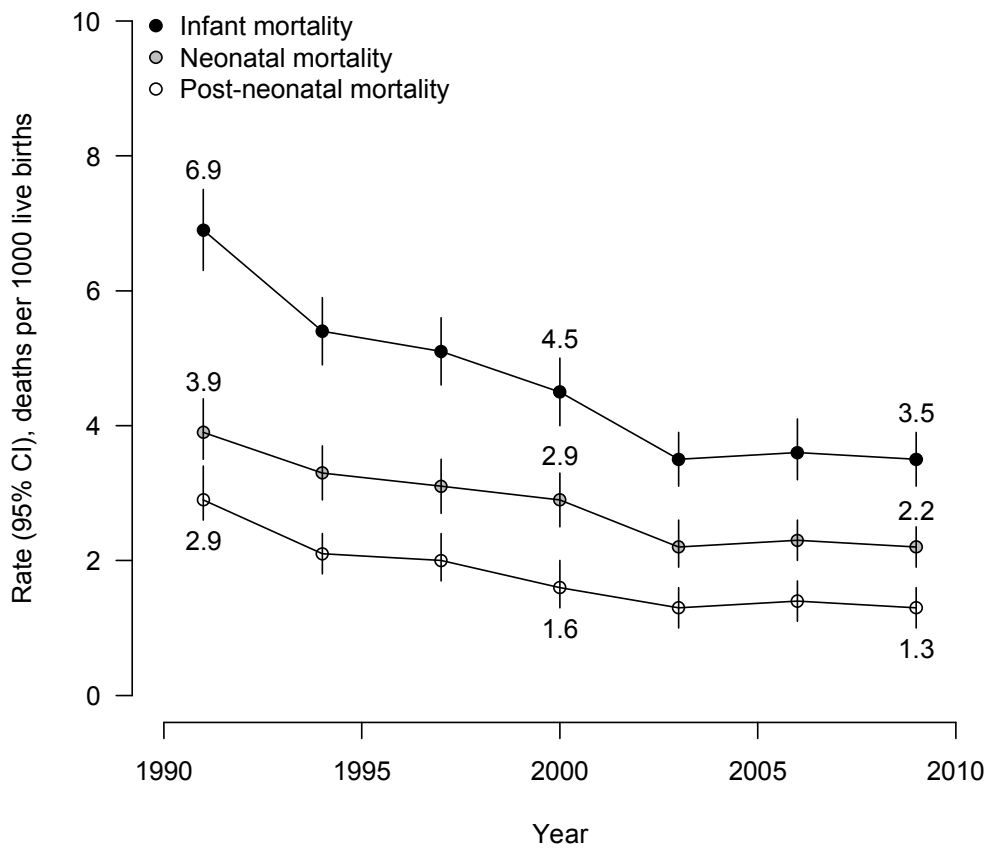


Table 21: Infant mortality in Western Australia 1990-2010 in the Aboriginal population

Triennium	Middle year of triennium	Live births	Neonatal mortality		Post-neonatal mortality			Infant mortality	
			N	Rate (95% CI) per 1000 live births	N	Rate (95% CI) per 1000 live births		N	Rate (95% CI) per 1000 live births
1990-1992	1991	4418	41	9.3 (6.8-12.6)	52	11.8	(9.0-15.4)	93	21.1 (17.2-25.7)
1993-1995	1994	4312	34	7.9 (5.6-11.0)	50	11.6	(8.8-15.3)	84	19.5 (15.8-24.1)
1996-1998	1997	4480	30	6.7 (4.7-9.5)	38	8.5	(6.2-11.6)	68	15.2 (12.0-19.2)
1999-2001	2000	4822	43	8.9 (6.6-12.0)	36	7.5	(5.4-10.3)	79	16.4 (13.2-20.4)
2002-2004	2003	4727	35	7.4 (5.3-10.3)	25	5.3	(3.6-7.8)	60	12.7 (9.9-16.3)
2005-2007	2006	5287	33	6.2 (4.4-8.8)	32	6.1	(4.3-8.5)	65	12.3 (9.7-15.6)
2008-2010	2009	5134	37	7.2 (5.2-9.9)	24	4.7	(3.1-6.9)	61	11.9 (9.3-15.2)

* Source: Australian Bureau of Statistics (cat. No. 3302.0): deaths, Australia, 1990-2010 (confidence interval estimated from number of deaths and mortality rates given by Australian Bureau of Statistics).

Table 22: Infant mortality in Western Australia 1990-2010 in the non-Aboriginal population

Triennium	Middle year of triennium	Live births	Neonatal mortality		Post-neonatal mortality			Infant mortality	
			N	Rate (95% CI) per 1000 live births	N	Rate (95% CI) per 1000 live births		N	Rate (95% CI) per 1000 live births
1990-1992	1991	71400	258	3.6 (3.2-4.1)	171	2.4	(2.1-2.8)	429	6.0 (5.5-6.6)
1993-1995	1994	71341	214	3.0 (2.6-3.4)	107	1.5	(1.2-1.8)	321	4.5 (4.0-5.0)
1996-1998	1997	71514	203	2.8 (2.5-3.3)	115	1.6	(1.3-1.9)	318	4.4 (4.0-5.0)
1999-2001	2000	70565	172	2.4 (2.1-2.8)	88	1.2	(1.0-1.5)	260	3.7 (3.3-4.2)
2002-2004	2003	69722	131	1.9 (1.6-2.2)	69	1.0	(0.8-1.3)	200	2.9 (2.5-3.3)
2005-2007	2006	79838	162	2.0 (1.7-2.4)	83	1.0	(0.8-1.3)	245	3.1 (2.7-3.5)
2008-2010	2009	87347	167	1.9 (1.6-2.2)	92	1.1	(0.9-1.3)	259	3.0 (2.6-3.3)

* Source: Australian Bureau of Statistics (cat. No. 3302.0): deaths, Australia, 1990-2010 (confidence interval estimated from number of deaths and mortality rates given by Australian Bureau of Statistics).

Figure 16: Infant mortality in Western Australia 1990-2010 in the Aboriginal and non-Aboriginal population

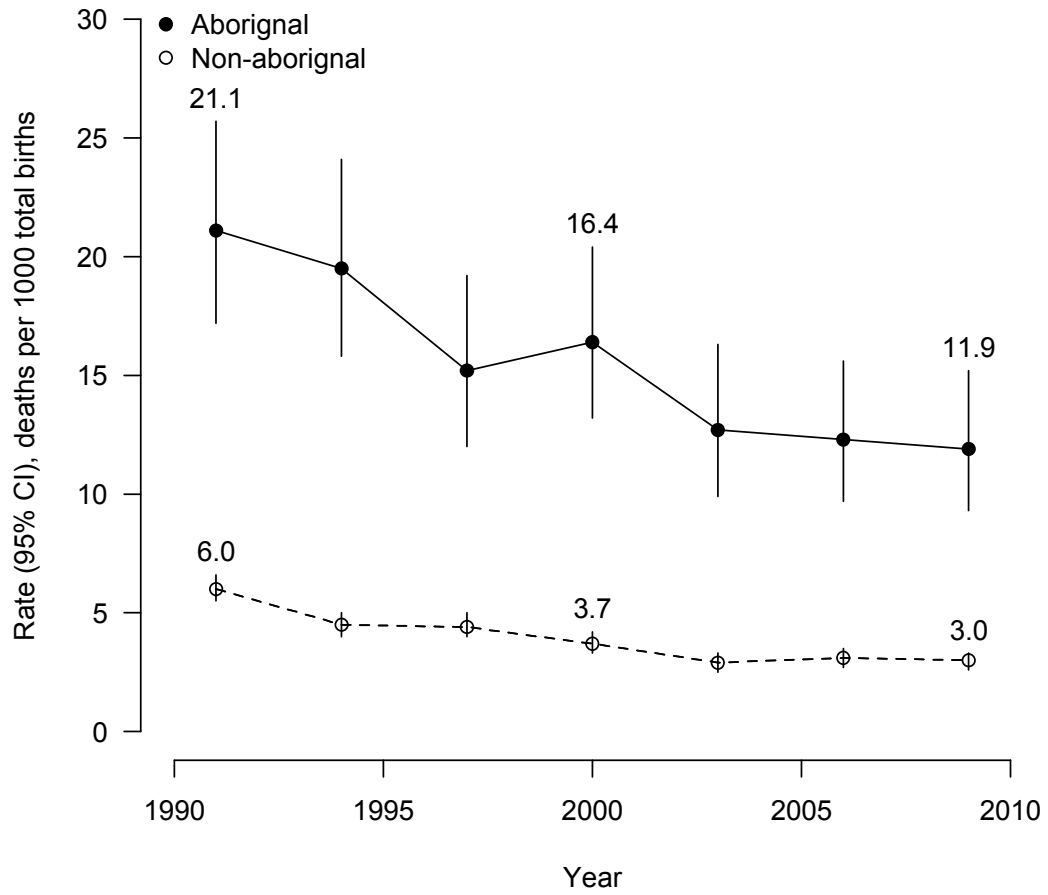


Table 23: Infant mortality in Western Australia 2008-2010, by health service region

Region	Live births*	Neonatal mortality			Post-neonatal mortality			Infant mortality		
		N	Rate (95% CI)	per 1000 live births	N	Rate (95% CI)	per 1000 live births	N	Rate (95% CI)	per 1000 live births
Kimberley	2 035	8	3.9 (2.0-7.7)		8	3.9 (2.0-7.7)		16	7.9 (4.8-12.7)	
Pilbara	2 493	8	3.2 (1.6-6.3)		3	1.2 (0.4-3.5)		11	4.4 (2.5-7.9)	
Goldfields	2 837	7	2.5 (1.2-5.1)		6	2.1 (1.0-4.6)		13	4.6 (2.7-7.8)	
Midwest	2 876	7	2.4 (1.2-5.0)		8	2.8 (1.4-5.5)		15	5.2 (3.2-8.6)	
North Metro	37 112	64	1.7 (1.4-2.2)		23	0.6 (0.4-0.9)		87	2.3 (1.9-2.9)	
South Metro	33 658	84	2.5 (2.0-3.1)		50	1.5 (1.1-2.0)		134	4.0 (3.4-4.7)	
Wheatbelt	2 968	8	2.7 (1.4-5.3)		7	2.4 (1.1-4.9)		15	5.1 (3.1-8.3)	
South West	6 186	12	1.9 (1.1-3.4)		7	1.1 (0.5-2.3)		19	3.1 (2.0-4.8)	
Great Southern	2 235	5	2.2 (1.0-5.2)		3	1.3 (0.5-3.9)		8	3.6 (1.8-7.0)	
Metro regions	70 770	148	2.1 (1.8-2.5)		73	1.0 (0.8-1.3)		221	3.1 (2.7-3.6)	
WACHS regions	21 630	55	2.5 (2.0-3.3)		42	1.9 (1.4-2.6)		97	4.5 (3.7-5.5)	
Total	92 400	203	2.2 (1.9-2.5)		115	1.3 (1.0-1.5)		318	3.5 (3.1-3.9)	

* There were 81 births for which it was not possible to assign a SEIFA score as the mother's usual residence was outside of WA; there was one neonatal death and one post-neonatal death in this group.

Figure 17: Infant mortality in Western Australia 2008-2010, by health service region

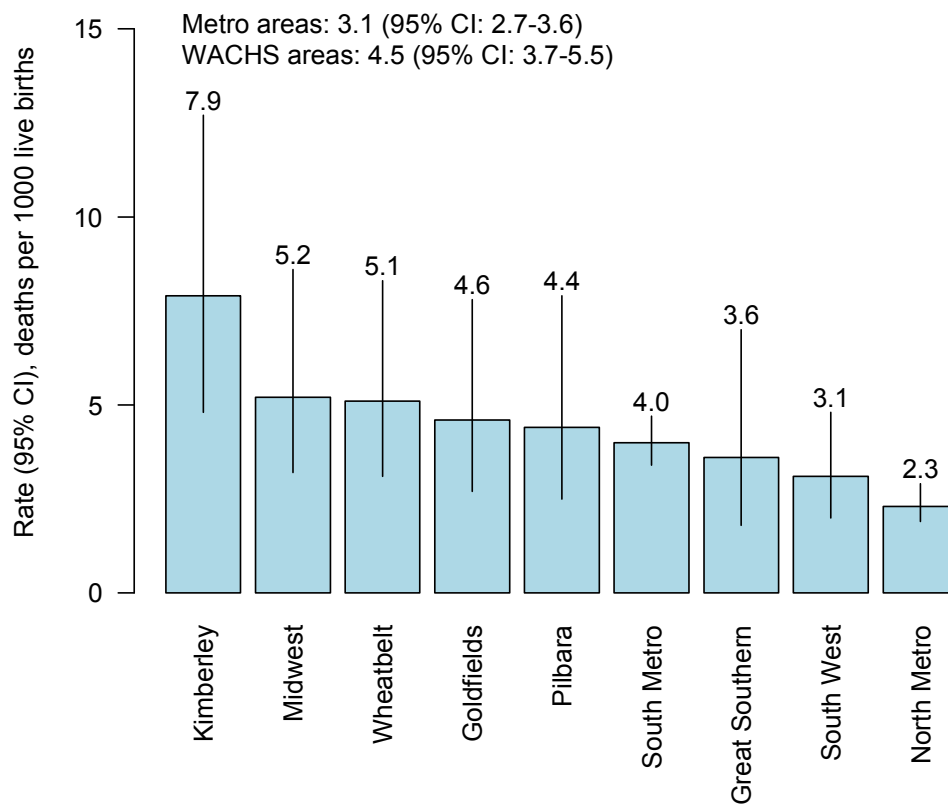


Table 24: Infant mortality in Western Australia 2008-2010, by maternal socio-economic status

Quintile of SEIFA score of mother's postcode*	Live births [†]	Neonatal mortality			Post-neonatal mortality			Infant mortality		
		N	Rate (95% CI)	per 1000 live births	N	Rate (95% CI)	per 1000 live births	N	Rate (95% CI)	per 1000 live births
Quintile 1 (most deprived)	11 548	33	2.9 (2.0-4.0)		19	1.6 (1.1-2.6)		52	4.5 (3.4-5.9)	
Quintile 2	19 263	62	3.2 (2.5-4.1)		35	1.8 (1.3-2.5)		97	5.0 (4.1-6.1)	
Quintile 3	19 615	49	2.5 (1.9-3.3)		23	1.2 (0.8-1.8)		72	3.7 (2.9-4.6)	
Quintile 4	17 386	19	1.1 (0.7-1.7)		21	1.2 (0.8-1.8)		40	2.3 (1.7-3.1)	
Quintile 5 (least deprived)	24 588	40	1.6 (1.2-2.2)		17	0.7 (0.4-1.1)		57	2.3 (1.8-3.0)	
Total	92 400	203	2.2 (1.9-2.5)		115	1.3 (1.0-1.5)		318	3.5 (3.1-3.9)	

* Socio-Economic Indexes for Areas (SEIFA) is a product developed by the ABS that ranks areas according to relative socio-economic advantage and disadvantage; quintile of areas within WA, only.

[†] There were 81 births for which it was not possible to assign a SEIFA score as the mother's usual residence was outside of WA; there was one neonatal death and one post-neonatal death in this group.

Figure 18: Infant mortality in Western Australia 2008-2010, by maternal socio-economic status

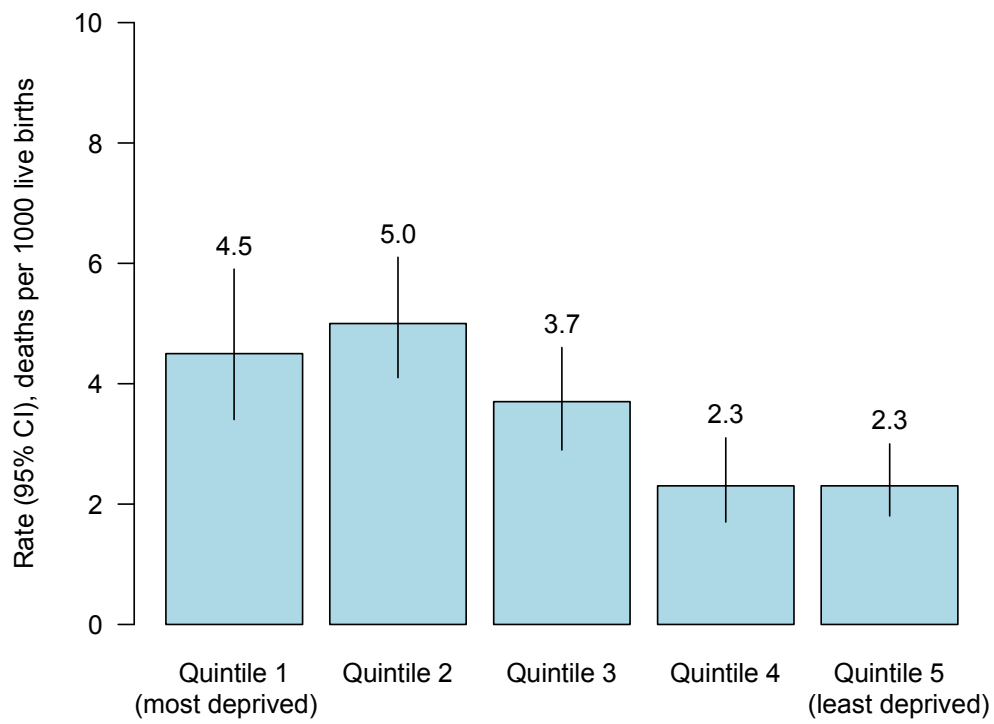


Table 25: Infant mortality in Western Australia 2008-2010, by maternal ethnicity

Maternal ethnicity	Live births	Neonatal mortality		Post-neonatal mortality		Infant mortality		
		N	Rate (95% CI) per 1000 live births	N	Rate (95% CI) per 1000 live births	N	Rate (95% CI) per 1000 live births	per 1000 live births
Caucasian	72 969	128	1.8 (1.5-2.1)	74	1.0 (0.8-1.3)	202	2.8 (2.4-3.2)	
Aboriginal	5 134	37	7.2 (5.2-9.9)	24	4.7 (3.1-6.9)	61	11.9 (9.3-15.2)	
Asian/Indian	7 516	20	2.7 (1.7-4.1)	8	1.1 (0.5-2.1)	28	3.7 (2.6-5.4)	
Other	6 861	19	2.8 (1.8-4.3)	10	1.5 (0.8-2.7)	29	4.2 (2.9-6.1)	
Total	92 480	204	2.2 (1.9-2.5)	116	1.3 (1.0-1.5)	320	3.5 (3.1-3.9)	

Figure 19: Infant mortality in Western Australia 2008-2010, by maternal ethnicity

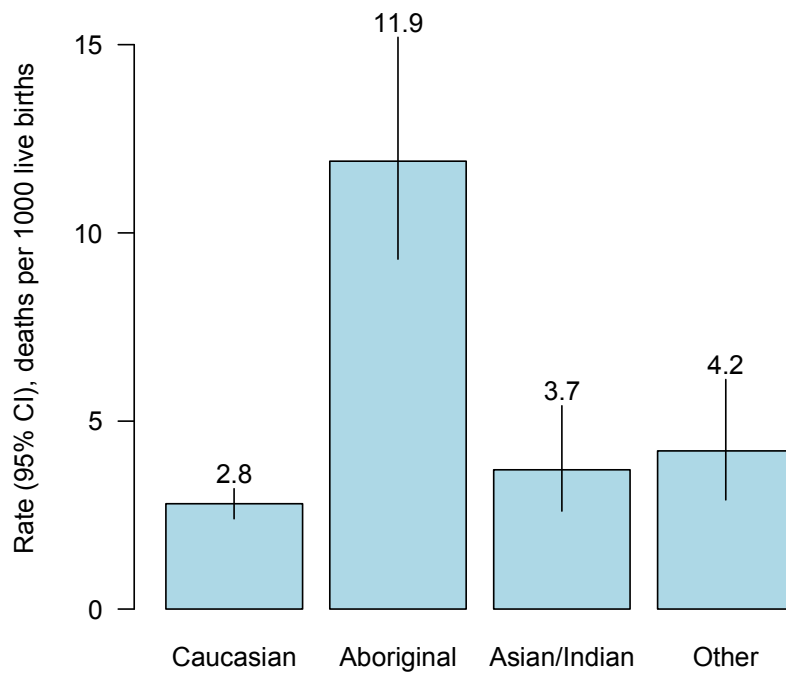


Table 26: Infant mortality in Western Australia 2008-2010, by maternal age

Maternal age, years	Mean of group, years	Live births	Neonatal mortality			Post-neonatal mortality			Infant mortality		
			N	Rate (95% CI)	per 1000 live births	N	Rate (95% CI)	per 1000 live births	N	Rate (95% CI)	per 1000 live births
<20	17.9	4 351	18	4.1	(2.6-6.5)	11	2.5	(1.4-4.5)	29	6.7	(4.6-9.6)
20-24	22.2	14 459	41	2.8	(2.1-3.8)	32	2.2	(1.6-3.1)	73	5.0	(4.0-6.3)
25-29	27.2	25 613	59	2.3	(1.8-3.0)	32	1.2	(0.9-1.8)	91	3.6	(2.9-4.4)
30-34	31.9	28 458	52	1.8	(1.4-2.4)	22	0.8	(0.5-1.2)	74	2.6	(2.1-3.3)
35-39	36.6	16 317	25	1.5	(1.0-2.3)	14	0.9	(0.5-1.4)	39	2.4	(1.7-3.3)
≥40	41.2	3 282	9	2.7	(1.4-5.2)	5	1.5	(0.7-3.6)	14	4.3	(2.5-7.1)
Total	29.6	92 480	204	2.2	(1.9-2.5)	116	1.3	(1.0-1.5)	320	3.5	(3.1-3.9)

Figure 20: Infant mortality in Western Australia 2008-2010, by maternal age

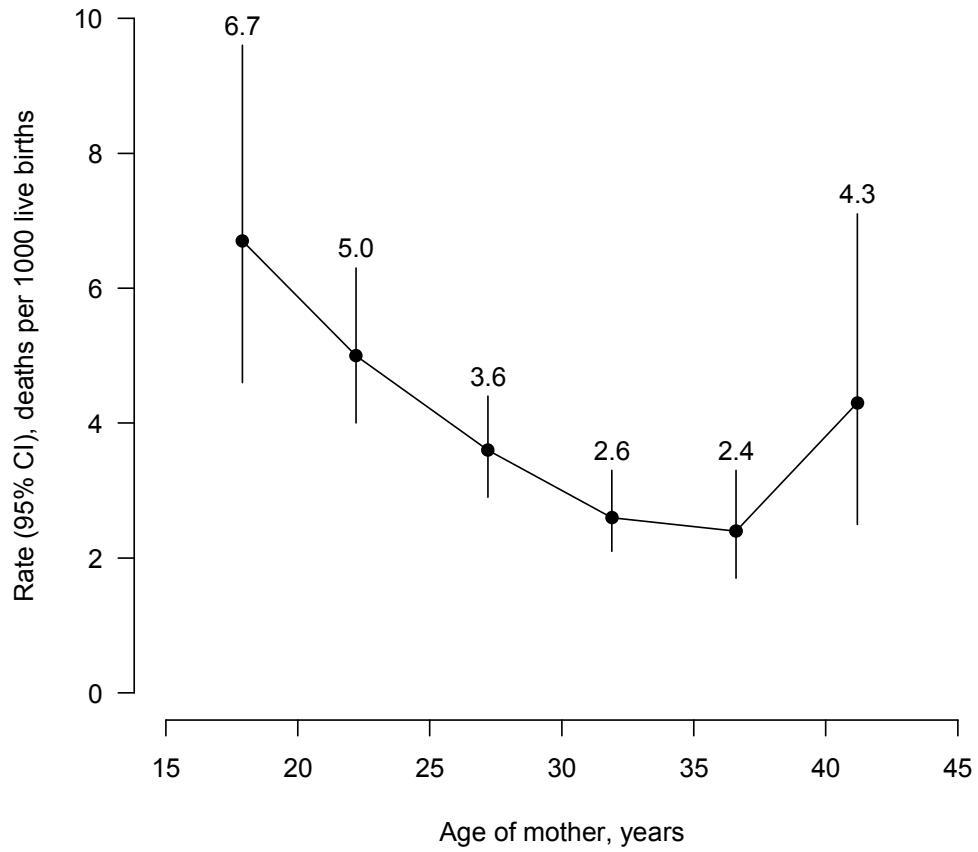


Table 27: Infant mortality in Western Australia 2008-2010, by parity

Parity	Live births	Neonatal mortality		Post-neonatal mortality			Infant mortality		
		N	Rate (95% CI) per 1000 live births	N	Rate (95% CI) per 1000 live births	per	N	Rate (95% CI) per 1000 live births	per
Primipara	28 205	65	2.3 (1.8-2.9)	28	1.0 (0.7-1.4)		93	3.3 (2.7-4.0)	
Multipara	64 275	139	2.2 (1.8-2.6)	88	1.4 (1.1-1.7)		227	3.5 (3.1-4.0)	
Total	92 480	204	2.2 (1.9-2.5)	116	1.3 (1.0-1.5)		320	3.5 (3.1-3.9)	

Figure 21: Infant mortality in Western Australia 2008-2010, by parity

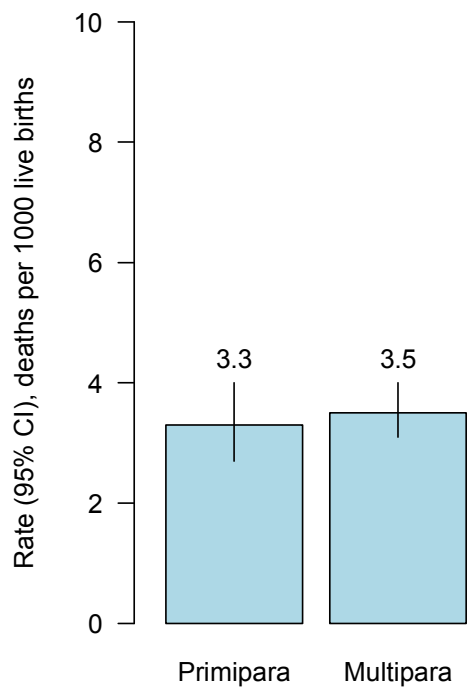


Table 28: Infant mortality in Western Australia 2008-2010, by plurality

Plurality	Live births	Neonatal mortality			Post-neonatal mortality			Infant mortality		
		N	Rate (95% CI)	per 1000 live births	N	Rate (95% CI)	per 1000 live births	N	Rate (95% CI)	per 1000 live births
Singletons	89 913	174	1.9 (1.7-2.2)		109	1.2 (1.0-1.5)		283	3.1 (2.8-3.5)	
Twins	2 531	27	10.7 (7.3-15.5)		7	2.8 (1.3-5.7)		34	13.4 (9.6-18.7)	
Higher order multiples	36	3	83.3 (28.7-218.3)		0	0.0 (0.0-96.4)		3	83.3 (28.7-218.3)	
Total	92 480	204	2.2 (1.9-2.5)		116	1.3 (1.0-1.5)		320	3.5 (3.1-3.9)	

Figure 22: Infant mortality in Western Australia 2008-2010, by plurality

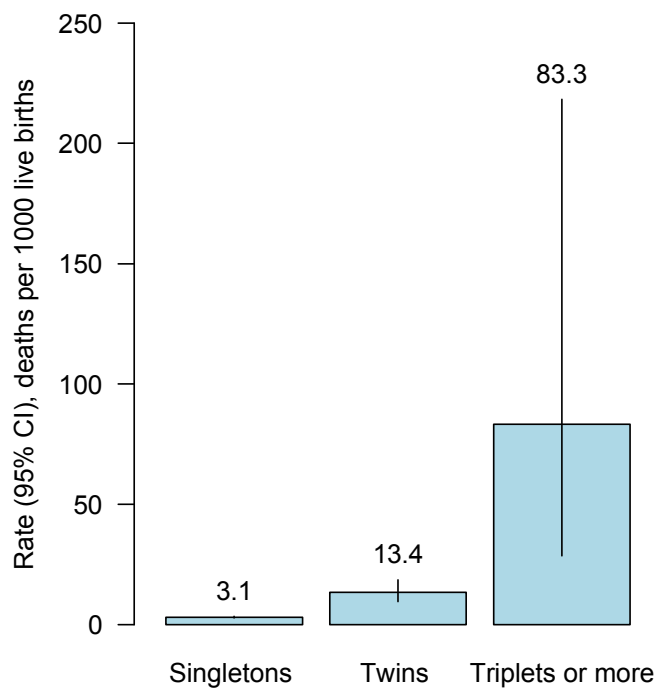


Table 29: Infant mortality in Western Australia 2008-2010, by gestational age at birth

Gestational age at birth, weeks	Live births	Neonatal mortality			Post-neonatal mortality			Infant mortality		
		N	Rate (95% CI)	per 1000 live births	N	Rate (95% CI)	per 1000 live births	N	Rate (95% CI)	per 1000 live births
20-27	404	94	232.7 (194.1-276.3)		12	29.7 (17.1-51.2)		106	262.4 (221.9-307.4)	
28-31	686	17	24.8 (15.5-39.3)		8	11.7 (5.9-22.8)		25	36.4 (24.8-53.2)	
32-36	6 390	27	4.2 (2.9-6.1)		19	3.0 (1.9-4.6)		46	7.2 (5.4-9.6)	
37-41	84 451	66	0.8 (0.6-1.0)		76	0.9 (0.7-1.1)		142	1.7 (1.4-2.0)	
≥42	549	0	0.0 (0.0-6.9)		1	1.8 (0.3-10.2)		1	1.8 (0.3-10.2)	
Total	92 480	204	2.2 (1.9-2.5)		116	1.3 (1.0-1.5)		320	3.5 (3.1-3.9)	

Figure 23: Infant mortality in Western Australia 2008-2010, by gestational age at birth

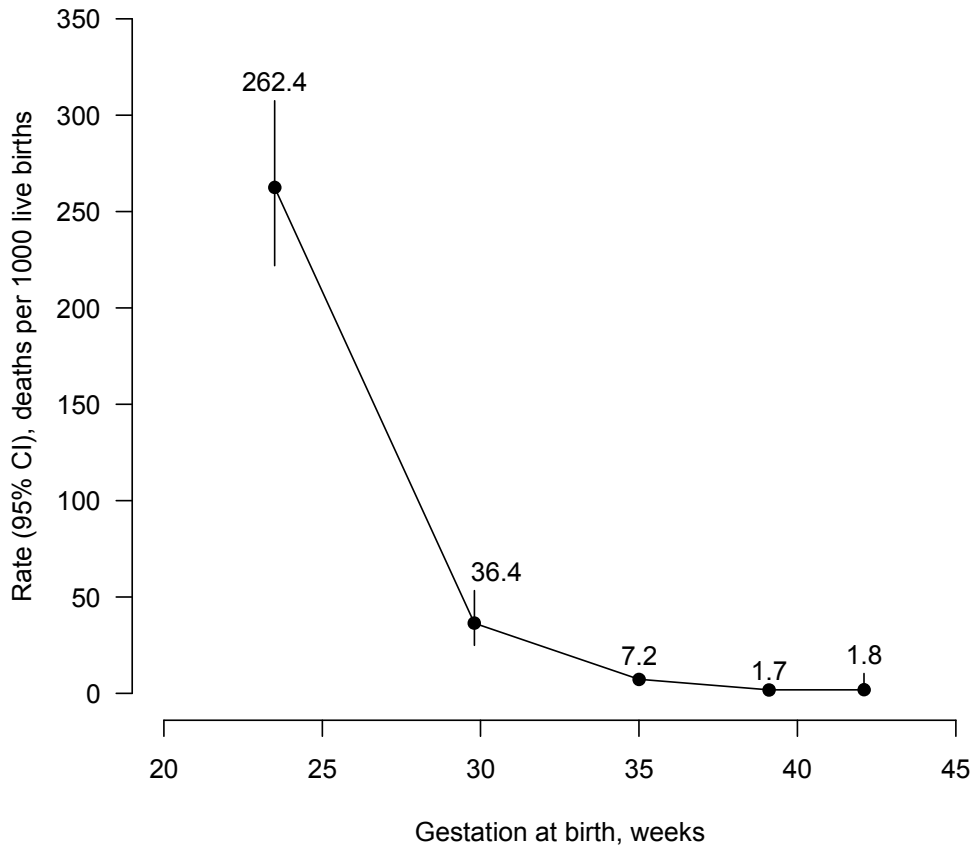


Table 30: Infant mortality in Western Australia 2008-2010, by birthweight

Birth-weight, kg	Mean of group, kg	Live births*	Neonatal mortality			Post-neonatal mortality			Infant mortality		
			N	Rate (95% CI)	per 1000 live births	N	Rate (95% CI)	per 1000 live births	N	Rate (95% CI)	per 1000 live births
<1.5	0.87	928	106	114.2 (95.3-136.3)		19	20.5 (13.1-31.8)		125	134.7 (114.2-158.2)	
1.5-<2.5	2.17	4 747	30	6.3 (4.4-9.0)		19	4.0 (2.6-6.2)		49	10.3 (7.8-13.6)	
2.5-<3.0	2.80	14 525	29	2.0 (1.4-2.9)		19	1.3 (0.8-2.0)		48	3.3 (2.5-4.4)	
3.0-<4.0	3.47	62 308	34	0.5 (0.4-0.8)		53	0.9 (0.7-1.1)		87	1.4 (1.1-1.7)	
≥4.0	4.25	9 971	5	0.5 (0.2-1.2)		6	0.6 (0.3-1.3)		11	1.1 (0.6-2.0)	
Total	3.34	92 480	204	2.2 (1.9-2.5)		116	1.3 (1.0-1.5)		320	3.5 (3.1-3.9)	

* The birthweight of one baby was unknown; this baby was not reported to have died in the neonatal or post-neonatal period.

Figure 24: Infant mortality in Western Australia 2008-2010, by birthweight

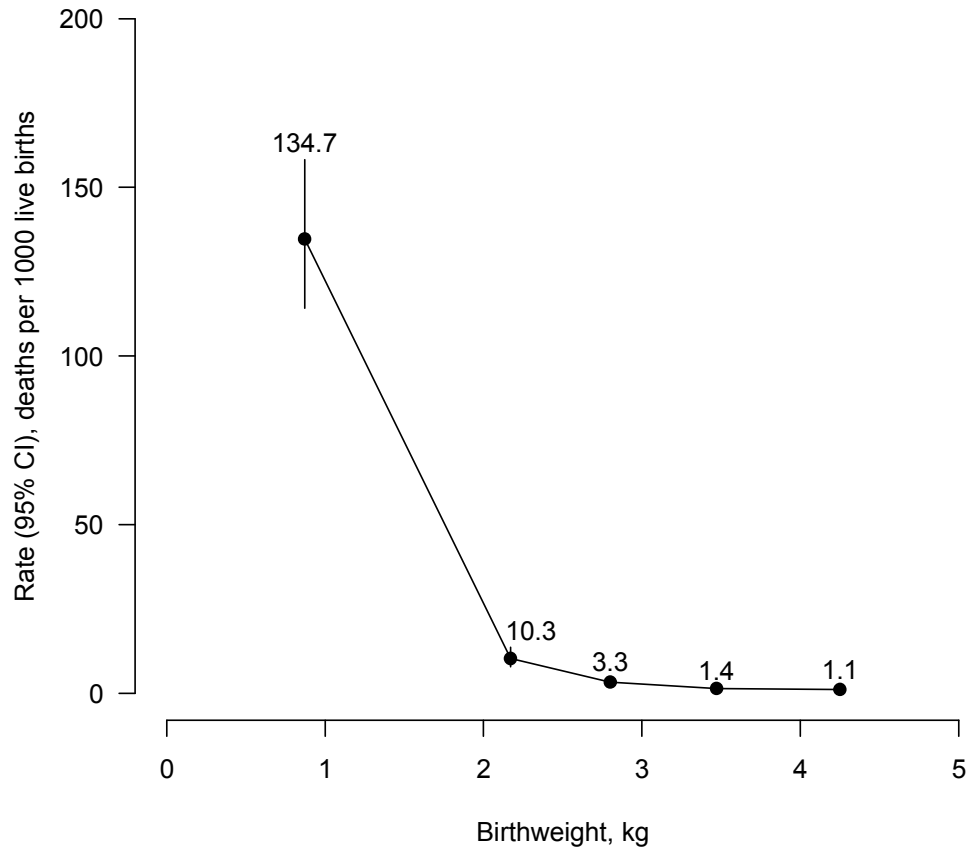


Table 31: Infant mortality in Western Australia 2008-2010, by cause of death (PSANZ-PDC)

	Neonatal mortality				Post-neonatal mortality				Infant mortality			
	N	%	Rate (95% CI) per 1000 live births		N	%	Rate (95% CI) per 1000 live births		N	%	Rate (95% CI) per 1000 live births	
1. Congenital abnormality	68	33.3	0.7	(0.6-0.9)	29	25.0	0.3	(0.2-0.5)	97	30.3	1.0	(0.9-1.3)
2. Perinatal infection	17	8.3	0.2	(0.1-0.3)	0	0.0	0.0	(0.0-0.0)	17	5.3	0.2	(0.1-0.3)
3. Hypertension	5	2.5	0.1	(0.0-0.1)	2	1.7	0.0	(0.0-0.1)	7	2.2	0.1	(0.0-0.2)
4. Antepartum haemorrhage	11	5.4	0.1	(0.1-0.2)	3	2.6	0.0	(0.0-0.1)	14	4.4	0.2	(0.1-0.3)
5. Maternal conditions	4	2.0	0.0	(0.0-0.1)	0	0.0	0.0	(0.0-0.0)	4	1.3	0.0	(0.0-0.1)
6. Specific perinatal conditions	7	3.4	0.1	(0.0-0.2)	2	1.7	0.0	(0.0-0.1)	9	2.8	0.1	(0.1-0.2)
7. Hypoxic peripartum death	12	5.9	0.1	(0.1-0.2)	0	0.0	0.0	(0.0-0.0)	12	3.8	0.1	(0.1-0.2)
8. Fetal growth restriction	5	2.5	0.1	(0.0-0.1)	0	0.0	0.0	(0.0-0.0)	5	1.6	0.1	(0.0-0.1)
9. Spontaneous preterm	61	29.9	0.7	(0.5-0.8)	9	7.8	0.1	(0.1-0.2)	70	21.9	0.8	(0.6-1.0)
10. Unexplained antepartum death	0	0.0	0.0	(0.0-0.0)	0	0.0	0.0	(0.0-0.0)	0	0.0	0.0	(0.0-0.0)
11. No obstetric antecedent	14	6.9	0.2	(0.1-0.3)	71	61.2	0.8	(0.6-1.0)	85	26.6	0.9	(0.7-1.1)
Total	204	100.0	2.2	(1.9-2.5)	116	100.0	1.3	(1.0-1.5)	320	100.0	3.5	(3.1-3.9)

Figure 25: Infant mortality rate in Western Australia 2008-2010, by cause of death (PSANZ-PDC)

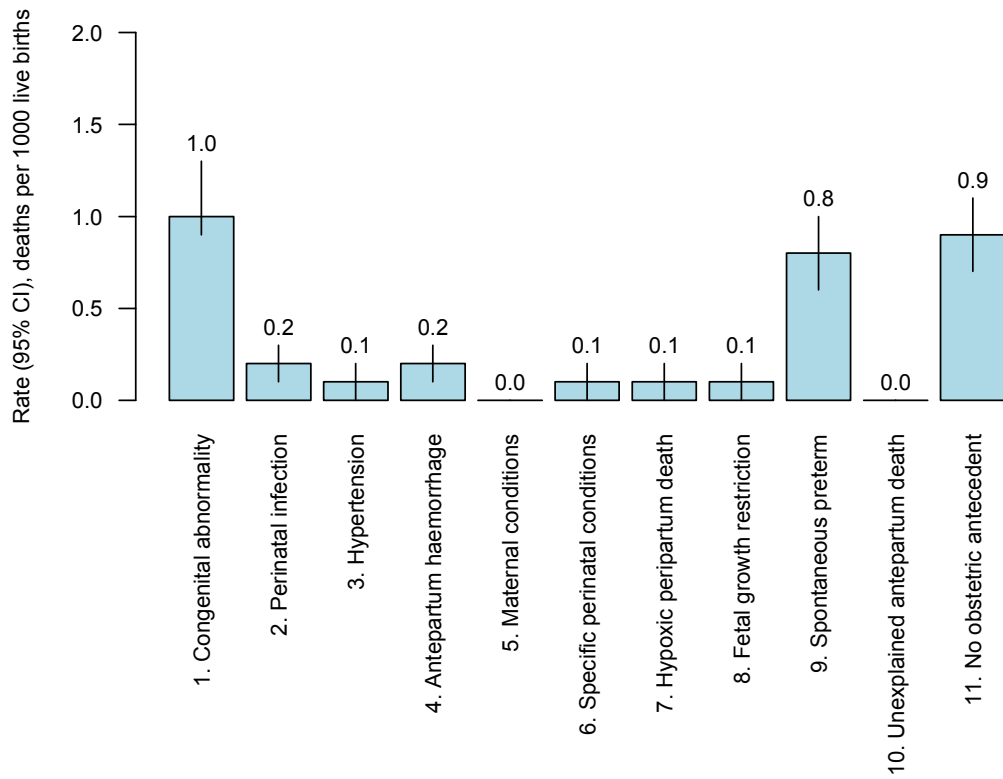


Figure 26: Number of infant deaths in Western Australia 2008-2010, by cause of death (PSANZ-PDC)

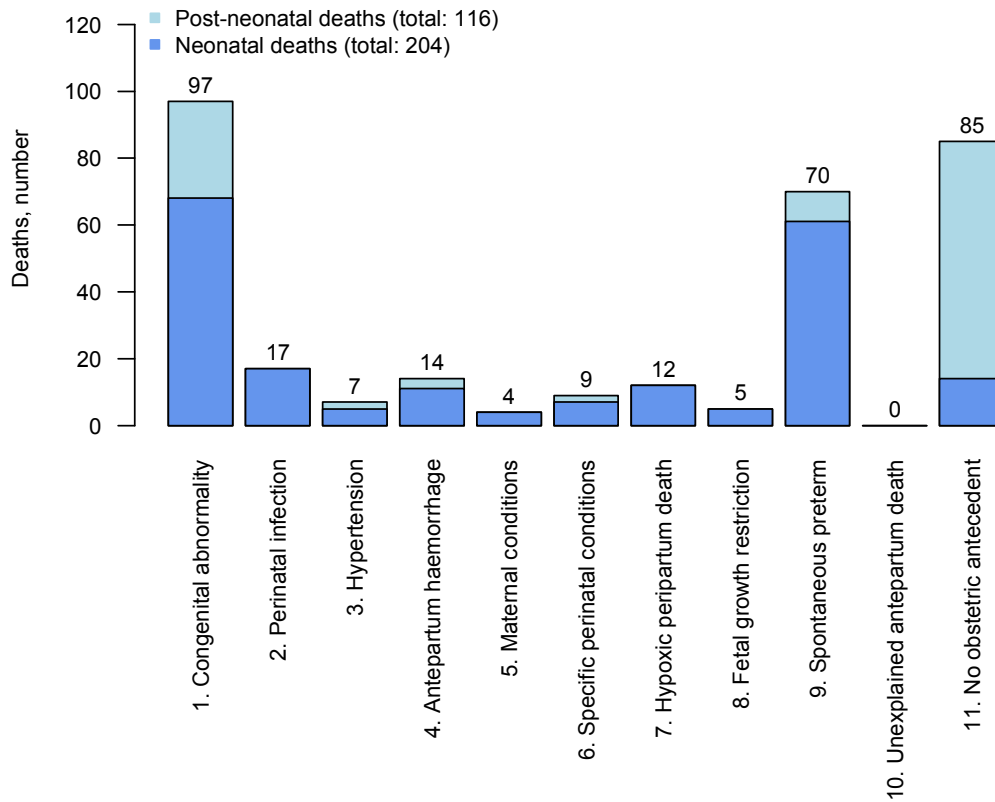


Table 32: Infant mortality in Western Australia 2008-2010, by cause of death (PSANZ-NDC)

Cause of death	Neonatal mortality			Post-neonatal mortality			Infant mortality		
	N	%	Rate (95% CI) per 1000 live births	N	%	Rate (95% CI) per 1000 live births	N	%	Rate (95% CI) per 1000 live births
1. Congenital abnormality	68	33.3	0.7 (0.6-0.9)	27	23.3	0.3 (0.2-0.4)	95	29.7	1.0 (0.8-1.3)
2. Extreme prematurity	59	28.9	0.6 (0.5-0.8)	4	3.4	0.0 (0.0-0.1)	63	19.7	0.7 (0.5-0.9)
3. Cardio-respiratory disorders	8	3.9	0.1 (0.0-0.2)	9	7.8	0.1 (0.1-0.2)	17	5.3	0.2 (0.1-0.3)
4. Infection	17	8.3	0.2 (0.1-0.3)	13	11.2	0.1 (0.1-0.2)	30	9.4	0.3 (0.2-0.5)
5. Neurological	30	14.7	0.3 (0.2-0.5)	2	1.7	0.0 (0.0-0.1)	32	10.0	0.3 (0.2-0.5)
6. Gastrointestinal	7	3.4	0.1 (0.0-0.2)	0	0.0	0.0 (0.0-0.0)	7	2.2	0.1 (0.0-0.2)
7.1 SIDS	9	4.4	0.1 (0.1-0.2)	46	39.7	0.5 (0.4-0.7)	54	16.9	0.6 (0.5-0.8)
7.2-7.9 Other	6	2.9	0.1 (0.0-0.1)	15	12.9	0.2 (0.1-0.3)	22	6.9	0.2 (0.1-0.3)
Total	204	100.0	2.2 (1.9-2.5)	116	100.0	1.3 (1.0-1.5)	320	100.0	3.5 (3.1-3.9)

Figure 27: Infant mortality rate in Western Australia 2008-2010, by cause of death (PSANZ-NDC)

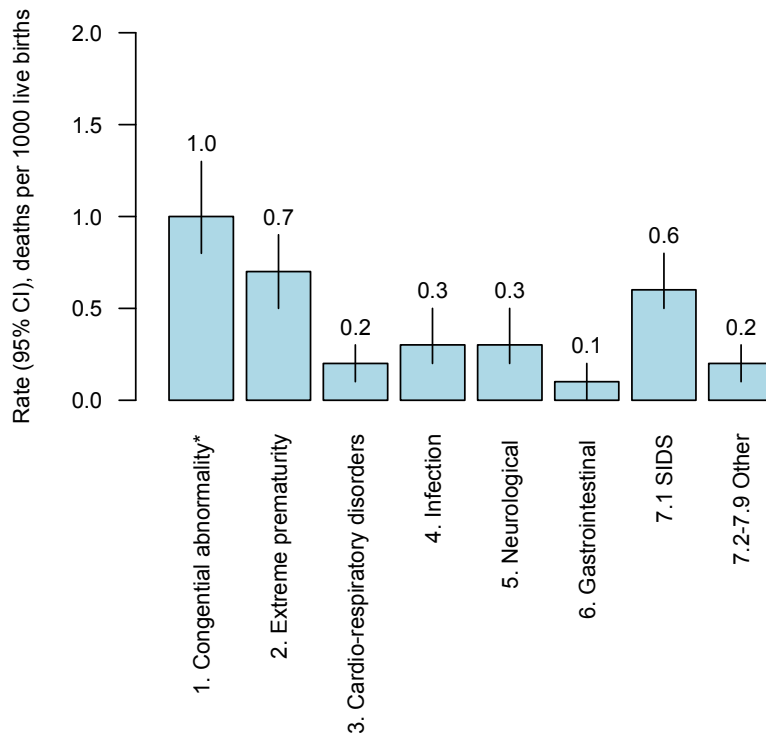


Figure 28: Number of infant deaths in Western Australia 2008-2010, by cause of death (PSANZ-NDC)

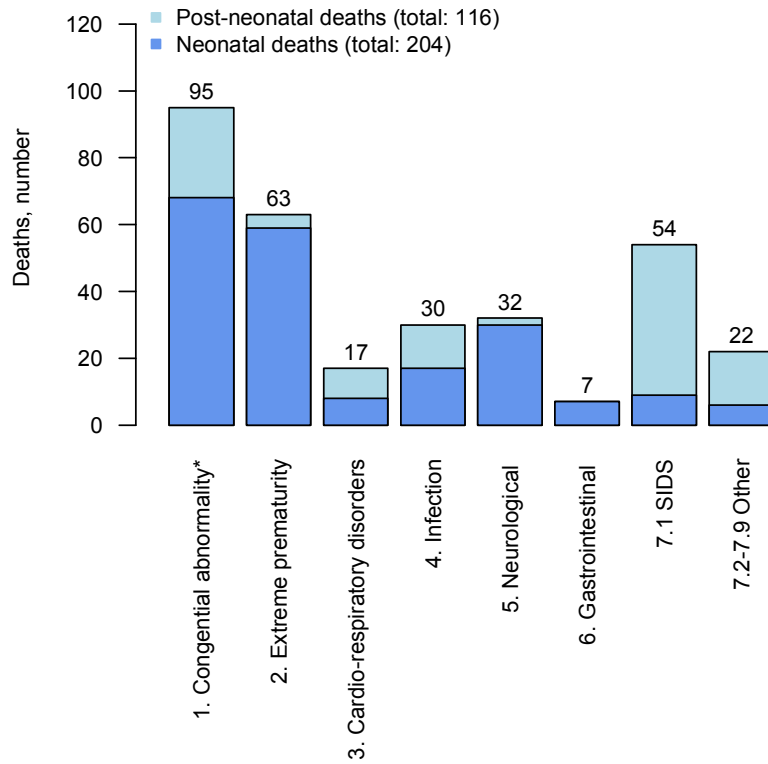


Table 33: Neonatal mortality in Western Australia 2008-2010, by cause of death (PSANZ-NDC) and medical preventability score

Cause of death	Neonatal deaths <26 weeks gestation	Investigated neonatal deaths ≥26 weeks gestations, by preventability score							Total
		1	2	3	4	5	6	Not scored	
1. Congenital abnormality	13	52	1	0	0	0	0	1	67
2. Extreme prematurity	57	2	0	0	0	0	0	0	59
3. Cardio-respiratory disorders	0	5	1	0	1	0	1	0	8
4. Infection	3	11	2	0	0	0	1	0	17
5. Neurological	4	16	4	0	5	1	0	0	30
6. Gastrointestinal	2	5	0	0	0	0	0	0	7
7.1 SIDS	0	9	0	0	0	0	0	0	9
7.2-7.9 Other	0	5	0	1	0	0	0	0	6
Total	79	105	8	1	6	1	2	1	203*

*Excludes one neonatal death ≥26 weeks gestations that was not investigated.

Table 34: Infant mortality in Western Australia 2008-2010, by cause of death (PSANZ-NDC) and preventability score

Cause of death	Infant deaths <26 weeks gestation	Investigated infant deaths ≥26 weeks gestations, by preventability score							Total
		1	2	3	4	5	6	Not scored	
1. Congenital abnormality*	13	77	1	0	0	0	0	3	94
2. Extreme prematurity	61	2	0	0	0	0	0	0	63
3. Cardio-respiratory disorders	1	13	1	0	1	0	1	0	17
4. Infection	4	23	2	0	0	0	1	0	30
5. Neurological	4	18	4	0	5	1	0	0	32
6. Gastrointestinal	2	5	0	0	0	0	0	0	7
7.1 SIDS	0	55	0	0	0	0	0	0	55
7.2-7.9 Other	0	20	0	1	0	0	0	0	21
Total	85	213	8	1	6	1	2	3	319

*Excludes one neonatal death ≥26 weeks gestations that was not investigated.

Table 35: Aboriginal population: infant mortality in Western Australia 2008-2010, by cause of death (PSANZ-PDC)

	Neonatal mortality				Post-neonatal mortality				Infant mortality			
	N	%	Rate (95% CI) per 1000 live births		N	%	Rate (95% CI) per 1000 live births		N	%	Rate (95% CI) per 1000 live births	
1. Congenital abnormality	8	21.6	1.6	(0.8-3.1)	2	8.3	0.4	(0.1-1.4)	10	16.4	1.9	(1.1-3.6)
2. Perinatal infection	4	10.8	0.8	(0.3-2.0)	0	0.0	0.0	(0.0-0.7)	4	6.6	0.8	(0.3-2.0)
3. Hypertension	1	2.7	0.2	(0.0-1.1)	1	4.2	0.2	(0.0-1.1)	2	3.3	0.4	(0.1-1.4)
4. Antepartum haemorrhage	2	5.4	0.4	(0.1-1.4)	0	0.0	0.0	(0.0-0.7)	2	3.3	0.4	(0.1-1.4)
5. Maternal conditions	1	2.7	0.2	(0.0-1.1)	0	0.0	0.0	(0.0-0.7)	1	1.6	0.2	(0.0-1.1)
6. Specific perinatal conditions	1	2.7	0.2	(0.0-1.1)	0	0.0	0.0	(0.0-0.7)	1	1.6	0.2	(0.0-1.1)
7. Hypoxic peripartum death	1	2.7	0.2	(0.0-1.1)	0	0.0	0.0	(0.0-0.7)	1	1.6	0.2	(0.0-1.1)
8. Fetal growth restriction	1	2.7	0.2	(0.0-1.1)	0	0.0	0.0	(0.0-0.7)	1	1.6	0.2	(0.0-1.1)
9. Spontaneous preterm	14	37.8	2.7	(1.6-4.6)	3	12.5	0.6	(0.2-1.7)	17	27.9	3.3	(2.1-5.3)
10. Unexplained antepartum death	0	0.0	0.0	(0.0-0.7)	0	0.0	0.0	(0.0-0.7)	0	0.0	0.0	(0.0-0.7)
11. No obstetric antecedent	4	10.8	0.8	(0.3-2.0)	18	75.0	3.5	(2.2-5.5)	22	36.1	4.3	(2.8-6.5)
Total	37	100.0	7.2	(5.2-9.9)	24	100.0	4.7	(3.1-6.9)	61	100.0	11.9	(9.3-15.2)

Figure 29: Aboriginal population: infant mortality rate in Western Australia 2008-2010, by cause of death (PSANZ-PDC)

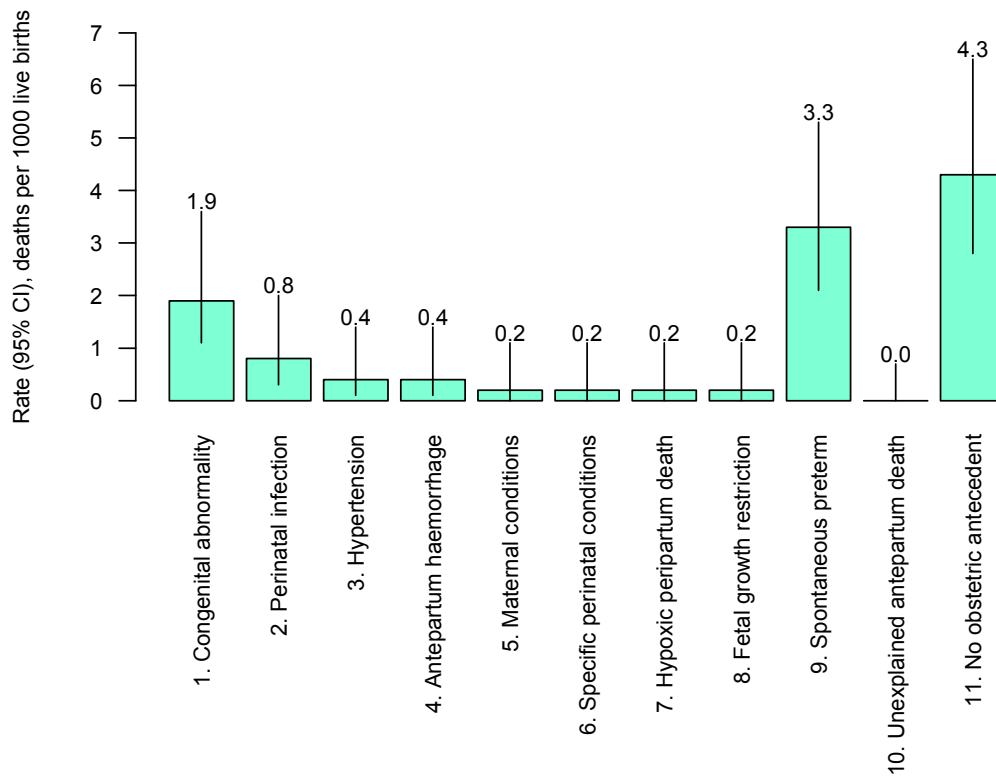


Table 36: Relative risks for infant mortality rate for Aboriginal population relative to non-Aboriginal population in Western Australia 2008-2010, by cause of death (PSANZ-PDC)

Cause of death (PSANZ-PDC)	Relative risks (95% CI)	p-value
1. Congenital abnormality	1.9 (1.0-3.7)	0.05
2. Perinatal infection	5.2 (1.7-16.0)	<0.00
3. Hypertension	6.8 (1.3-34.9)	0.02
4. Antepartum haemorrhage	2.8 (0.6-12.6)	0.18
5. Maternal conditions	5.6 (0.6-54.2)	0.13
6. Specific perinatal conditions	2.1 (0.3-16.9)	0.48
7. Hypoxic peripartum death	1.5 (0.2-11.9)	0.68
8. Fetal growth restriction	4.2 (0.5-37.8)	0.20
9. Spontaneous preterm	5.4 (3.1-9.4)	<0.00
10. Unexplained antepartum death	-	-
11. No obstetric antecedent	5.9 (3.6-9.6)	<0.00

Table 37: Aboriginal population: infant mortality in Western Australia 2008-2010, by cause of death (PSANZ-NDC)

	Neonatal mortality				Post-neonatal mortality				Infant mortality			
	N	%	Rate (95% CI) per 1000 live births		N	%	Rate (95% CI) per 1000 live births		N	%	Rate (95% CI) per 1000 live births	
1. Congenital abnormality	10	27.0	1.9	(1.1-3.6)	1	4.2	0.2	(0.0-1.1)	11	18.0	2.1	(1.2-3.8)
2. Extreme prematurity	14	37.8	2.7	(1.6-4.6)	2	8.3	0.4	(0.1-1.4)	16	26.2	3.1	(1.9-5.1)
3. Cardio-respiratory disorders	0	0.0	0.0	(0.0-0.7)	2	8.3	0.4	(0.1-1.4)	2	3.3	0.4	(0.1-1.4)
4. Infection	4	10.8	0.8	(0.3-2.0)	3	12.5	0.6	(0.2-1.7)	7	11.5	1.4	(0.7-2.8)
5. Neurological	2	5.4	0.4	(0.1-1.4)	0	0.0	0.0	(0.0-0.7)	2	3.3	0.4	(0.1-1.4)
6. Gastrointestinal	2	5.4	0.4	(0.1-1.4)	0	0.0	0.0	(0.0-0.7)	2	3.3	0.4	(0.1-1.4)
7.1 SIDS	2	5.4	0.4	(0.1-1.4)	13	54.2	2.5	(1.5-4.3)	15	24.6	2.9	(1.8-4.8)
7.2-7.9 Other	3	8.1	0.6	(0.2-1.7)	3	12.5	0.6	(0.2-1.7)	6	9.8	1.2	(0.5-2.5)
Total	37	100.0	7.2	(5.2-9.9)	24	100.0	4.7	(3.1-6.9)	61	100.0	11.9	(9.3-15.2)

Figure 30: Aboriginal population: infant mortality rate in Western Australia 2008-2010, by cause of death (PSANZ-NDC)

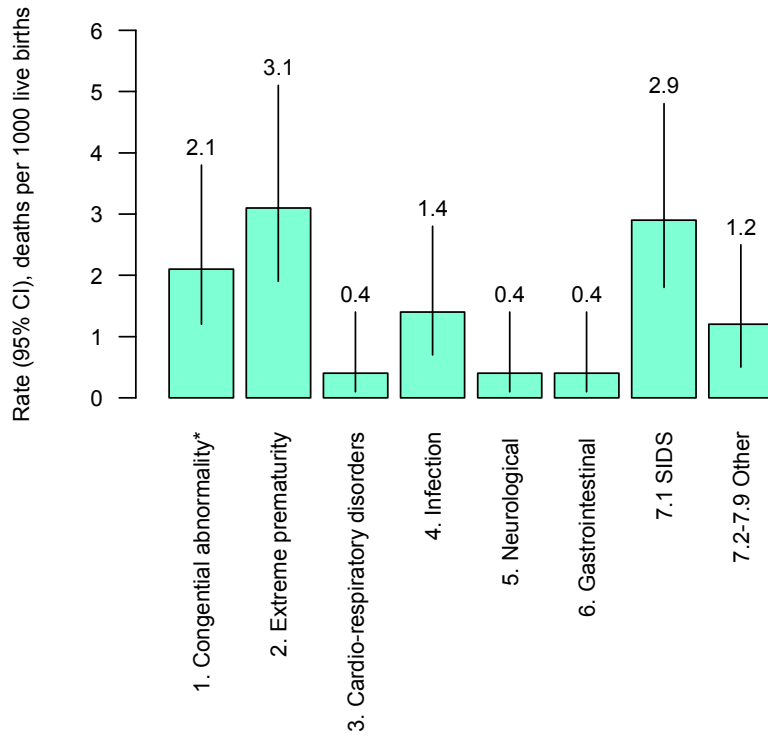


Table 38: Relative risks for infant mortality rate for Aboriginal population relative to non-Aboriginal population in Western Australia 2008-2010, by cause of death (PSANZ-NDC)

Cause of death (PSANZ-NDC)	Relative risk (95% CI)	p-value
1. Congenital abnormality	2.2 (1.2-4.2)	0.01
2. Extreme prematurity	5.8 (3.3-10.2)	<0.01
3. Cardio-respiratory disorders	2.3 (0.5-9.9)	0.28
4. Infection	5.2 (2.2-12.0)	<0.01
5. Neurological	1.1 (0.3-4.7)	0.87
6. Gastrointestinal	6.8 (1.3-34.9)	0.02
7.1 SIDS	6.4 (3.5-11.5)	<0.01
7.2-7.9 Other	6.8 (2.6-17.4)	<0.01

Perinatal and Infant mortality: 2000-2010

Table 39: Stillbirths in Western Australia 2000-2010, by cause of death (PSANZ-PDC)

	2000-2001			2002-2004			2005-2007			2008-2010		
	N	%	Rate (95% CI) per 1000 births	N	%	Rate (95% CI) per 1000 births	N	%	Rate (95% CI) per 1000 births	N	%	Rate (95% CI) per 1000 births
1. Congenital abnormality	97	26.1	1.9 (1.6-2.4)	145	26.6	1.9 (1.6-2.3)	178	29.8	2.1 (1.8-2.4)	190	28.0	2.0 (1.8-2.4)
2. Perinatal infection	12	3.2	0.2 (0.1-0.4)	23	4.2	0.3 (0.2-0.5)	33	5.5	0.4 (0.3-0.5)	22	3.2	0.2 (0.2-0.4)
3. Hypertension	16	4.3	0.3 (0.2-0.5)	38	7.0	0.5 (0.4-0.7)	30	5.0	0.4 (0.2-0.5)	20	2.9	0.2 (0.1-0.3)
4. Antepartum haemorrhage	37	9.9	0.7 (0.5-1.0)	40	7.3	0.5 (0.4-0.7)	38	6.4	0.4 (0.3-0.6)	25	3.7	0.3 (0.2-0.4)
5. Maternal conditions	19	5.1	0.4 (0.2-0.6)	20	3.7	0.3 (0.2-0.4)	30	5.0	0.4 (0.2-0.5)	38	5.6	0.4 (0.3-0.6)
6. Specific perinatal conditions	35	9.4	0.7 (0.5-1.0)	42	7.7	0.6 (0.4-0.8)	61	10.2	0.7 (0.6-0.9)	64	9.4	0.7 (0.5-0.9)
7. Hypoxic peripartum death	13	3.5	0.3 (0.2-0.4)	16	2.9	0.2 (0.1-0.3)	14	2.3	0.2 (0.1-0.3)	15	2.2	0.2 (0.1-0.3)
8. Fetal growth restriction	24	6.5	0.5 (0.3-0.7)	37	6.8	0.5 (0.4-0.7)	43	7.2	0.5 (0.4-0.7)	60	8.8	0.6 (0.5-0.8)
9. Spontaneous preterm	40	10.8	0.8 (0.6-1.1)	85	15.6	1.1 (0.9-1.4)	62	10.4	0.7 (0.6-0.9)	166	24.5	1.8 (1.5-2.1)
10. Unexplained antepartum death	79	21.2	1.6 (1.3-2.0)	100	18.3	1.3 (1.1-1.6)	109	18.2	1.3 (1.1-1.3)	77	11.4	0.8 (0.7-1.0)
11. No obstetric antecedent	0	0.0	0 (0.0-0.1)	0	0.0	0 (0.0-0.1)	0	0.0	0 (0.0-0.1)	1	0.1	0.0 (0.0-0.1)
Total	372	100.0	7.4 (6.8-7.8)	546	100.0	7.3 (6.7-7.9)	598	100.0	7.0 (6.4-7.6)	678	100.0	7.3 (6.8-7.8)

Table 40: Neonatal mortality in Western Australia 2000-2010, by cause of death (PSANZ-PDC)

	2000-2001				2002-2004				2005-2007				2008-2010			
	N	%	Rate (95% CI) per 1000 births		N	%	Rate (95% CI) per 1000 births		N	%	Rate (95% CI) per 1000 births		N	%	Rate (95% CI) per 1000 births	
1. Congenital abnormality	38	27.7	0.8	(0.6-1.0)	38	22.9	0.5	(0.4-0.7)	52	26.7	0.6	(0.5-0.8)	68	33.3	0.7	(0.6-0.9)
2. Perinatal infection	15	10.9	0.3	(0.2-0.5)	12	7.2	0.2	(0.1-0.3)	14	7.2	0.2	(0.1-0.3)	17	8.3	0.2	(0.1-0.3)
3. Hypertension	2	1.5	0.0	(0.0-0.1)	1	0.6	0.0	(0.0-0.1)	5	2.6	0.1	(0.0-0.1)	5	2.5	0.1	(0.0-0.1)
4. Antepartum haemorrhage	9	6.6	0.2	(0.1-0.3)	6	3.6	0.1	(0.0-0.2)	6	3.1	0.1	(0.0-0.2)	11	5.4	0.1	(0.1-0.2)
5. Maternal conditions	2	1.5	0.0	(0.0-0.1)	1	0.6	0.0	(0.0-0.1)	3	1.5	0.0	(0.0-0.1)	4	2.0	0.0	(0.0-0.1)
6. Specific perinatal conditions	9	6.6	0.2	(0.1-0.3)	10	6.0	0.1	(0.1-0.2)	9	4.6	0.1	(0.1-0.2)	7	3.4	0.1	(0.0-0.2)
7. Hypoxic peripartum death	6	4.4	0.1	(0.1-0.3)	15	9.0	0.2	(0.1-0.3)	12	6.2	0.1	(0.1-0.2)	12	5.9	0.1	(0.1-0.2)
8. Fetal growth restriction	0	0.0	0.0	(0.0-0.1)	5	3.0	0.1	(0.0-0.2)	5	2.6	0.1	(0.0-0.1)	5	2.5	0.1	(0.0-0.1)
9. Spontaneous preterm	50	36.5	1.0	(0.8-1.3)	67	40.4	0.9	(0.7-1.1)	75	38.5	0.9	(0.7-1.1)	61	29.9	0.7	(0.5-0.8)
10. Unexplained antepartum death	0	0.0	0.0	(0.0-0.0)		0.0	0.0	(0.0-0.1)	0	0.0	0.0	(0.0-0.0)	0	0.0	0.0	(0.0-0.0)
11. No obstetric antecedent	6	4.4	0.1	(0.1-0.3)	11	6.6	0.1	(0.1-0.3)	14	7.2	0.2	(0.1-0.3)	14	6.9	0.2	(0.1-0.3)
12. Not classified	1	0.0	0	(0.0-0.1)	0	0.0	0	(0.0-0.1)	0	0	0.0	(0.0-0.0)	0	0	0.0	(0.0-0.0)
Total	138	100.0	2.8	(2.3-3.3)	166	100.0	2.2	(1.0-2.6)	195	100.0	2.3	(2.0-2.6)	204	100.0	2.2	(1.9-2.5)

Table 41: Perinatal mortality in Western Australia 2000-2010, by cause of death (PSANZ-PDC)

	2000-2001				2002-2004				2005-2007				2008-2010			
	N	%	Rate (95% CI) per 1000 births		N	%	Rate (95% CI) per 1000 births		N	%	Rate (95% CI) per 1000 births		N	%	Rate (95% CI) per 1000 births	
1. Congenital abnormality	135	26.5	2.7	(2.3-3.2)	183	25.7	2.4	(2.1-2.8)	230	29.0	2.7	(2.4-3.1)	258	29.3	2.8	(2.5-3.1)
2. Perinatal infection	27	5.3	0.5	(0.4-0.8)	35	4.9	0.5	(0.3-0.6)	47	5.9	0.5	(0.4-0.7)	39	4.4	0.4	(0.3-0.6)
3. Hypertension	18	3.5	0.4	(0.2-0.6)	39	5.5	0.5	(0.4-0.7)	35	4.4	0.4	(0.3-0.6)	25	2.8	0.3	(0.2-0.4)
4. Antepartum haemorrhage	46	9.0	0.9	(0.7-1.2)	46	6.5	0.6	(0.5-0.8)	44	5.5	0.5	(0.4-0.7)	36	4.1	0.4	(0.3-0.5)
5. Maternal conditions	21	4.1	0.4	(0.3-0.6)	21	2.9	0.3	(0.2-0.4)	33	4.2	0.4	(0.3-0.5)	42	4.8	0.5	(0.3-0.6)
6. Specific perinatal conditions	44	8.6	0.9	(0.7-1.2)	52	7.3	0.7	(0.5-0.9)	70	8.8	0.8	(0.6-1.0)	71	8.0	0.8	(0.6-1.0)
7. Hypoxic peripartum death	19	3.7	0.4	(0.2-0.6)	31	4.4	0.4	(0.3-0.6)	26	3.3	0.3	(0.2-0.4)	27	3.1	0.3	(0.2-0.4)
8. Fetal growth restriction	24	4.7	0.5	(0.3-0.7)	42	5.9	0.6	(0.4-0.8)	48	6.1	0.6	(0.4-0.7)	65	7.4	0.7	(0.5-0.9)
9. Spontaneous preterm	90	17.7	1.8	(1.5-2.2)	152	21.3	2.0	(1.7-2.4)	137	17.3	1.6	(1.4-1.9)	227	25.7	2.4	(2.1-2.8)
10. Unexplained antepartum death	79	15.5	1.6	(1.3-2.0)	100	14.0	1.3	(1.1-1.6)	109	13.7	1.3	(1.1-1.5)	77	8.7	0.8	(0.7-1.0)
11. No obstetric antecedent	6	1.2	0.1	(0.1-0.3)	11	1.5	0.1	(0.1-0.3)	14	1.8	0.2	(0.1-0.3)	15	1.7	0.2	(0.1-0.3)
Total	509	100.0	10.1	(9.3-11.1)	712	100.0	9.5	(8.8-10.2)	793	100.0	9.3	(8.6-9.9)	882	100.0	9.5	(8.9-10.1)

Table 42: Neonatal mortality in Western Australia 2000-2010, by cause of death (PSANZ-NDC)

	2000-2001				2002-2004				2005-2007				2008-2010			
	N	%	Rate (95% CI) per 1000 livebirths		N	%	Rate (95% CI) per 1000 livebirths		N	%	Rate (95% CI) per 1000 livebirths		N	%	Rate (95% CI) per 1000 livebirths	
1. Congenital abnormality*	36	26.1	0.7	(0.5-1.0)	37	22.3	0.5	(0.4-0.7)	54	27.7	0.6	(0.5-0.8)	68	33.3	0.7	(0.6-0.9)
2. Extreme prematurity	41	29.7	0.8	(0.6-1.1)	42	25.3	0.6	(0.4-0.8)	59	30.3	0.7	(0.5-0.9)	59	28.9	0.6	(0.5-0.8)
3. Cardio-respiratory disorders	18	13.0	0.4	(0.2-0.6)	26	15.7	0.3	(0.2-0.5)	12	6.2	0.1	(0.1-0.2)	8	3.9	0.1	(0.0-0.2)
4. Infection	12	8.7	0.2	(0.1-0.4)	18	10.8	0.2	(0.2-0.4)	13	6.7	0.2	(0.1-0.3)	17	8.3	0.2	(0.1-0.3)
5. Neurological	18	13.0	0.4	(0.2-0.6)	24	14.5	0.3	(0.2-0.5)	34	17.4	0.4	(0.3-0.6)	30	14.7	0.3	(0.2-0.5)
6. Gastrointestinal	4	2.9	0.1	(0.0-0.2)	5	3.0	0.1	(0.0-0.2)	5	2.6	0.1	(0.0-0.1)	7	3.4	0.1	(0.0-0.2)
7.1 SIDS	1	0.7	0.0	(0.1-0.3)	1	0.6	0.0	(0.1-0.2)	9	4.6	0.1	(0.1-0.2)	9	4.4	0.1	(0.1-0.2)
7.2-7.9 Other	7	5.1	0.1	(0.0-0.1)	13	7.8	0.2	(0.1-0.3)	9	4.6	0.1	(0.1-0.2)	6	2.9	0.1	(0.0-0.1)
8. Not classified	1	0.7	0.0	(0.0-0.1)	0	0.0	0.0	(0.0-0.1)	0	0.0	0.0	(0.0-0.0)	0	0.0	0.0	(0.0-0.0)
Total	138	100.0	2.8	(2.3-3.3)	166	100.0	2.2	(1.0-2.6)	195	100.0	2.3	(2.0-2.6)	204	100.0	2.2	(1.9-2.5)

*including terminations for congenital abnormalities

Table 43: Postneonatal mortality in Western Australia 2000-2010, by cause of death (PSANZ-NDC)

	2000-2001				2002-2004				2005-2007				2008-2010			
	N	%	Rate (95% CI) per 1000 livebirths		N	%	Rate (95% CI) per 1000 livebirths		N	%	Rate (95% CI) per 1000 livebirths		N	%	Rate (95% CI) per 1000 livebirths	
1. Congenital abnormality*	16	19.0	0.3	(0.2-0.5)	22	23.4	0.3	(0.2-0.4)	39	33.9	0.5	(0.3-0.6)	27	23.3	0.3	(0.2-0.4)
2. Extreme prematurity	0	0.0	0.0	(0.0-0.1)	3	3.2	0.0	(0.0-0.1)	2	1.7	0.0	(0.0-0.1)	4	3.4	0.0	(0.0-0.1)
3. Cardio-respiratory disorders	5	6.0	0.1	(0.0-0.2)	3	3.2	0.0	(0.0-0.1)	7	6.1	0.1	(0.0-0.2)	9	7.8	0.1	(0.1-0.2)
4. Infection	11	13.1	0.2	(0.1-0.4)	16	17.0	0.2	(0.1-0.3)	15	13.0	0.2	(0.1-0.3)	13	11.2	0.1	(0.1-0.2)
5. Neurological	3	3.6	0.1	(0.0-0.2)	1	1.1	0.0	(0.0-0.1)	4	3.5	0.0	(0.0-0.1)	2	1.7	0.0	(0.0-0.1)
6. Gastrointestinal	5	6.0	0.1	(0.0-0.2)	1	1.1	0.0	(0.0-0.1)	4	3.5	0.0	(0.0-0.1)	0	0.0	0.0	(0.0-0.0)
7.1 SIDS	26	31.0	0.5	(0.4-0.8)	22	23.4	0.3	(0.2-0.4)	35	30.4	0.4	(0.3-0.6)	46	39.7	0.5	(0.4-0.7)
7.2-7.9 Other	18		0.4	(0.2-0.6)	26	27.7	0.3	(0.2-0.5)	9	7.8	0.1	(0.1-0.2)	15	12.9	0.2	(0.1-0.3)
Total	84	100.0	1.7	(1.4-2.1)	94	100.0	1.3	(1.0-1.5)	115	100.0	1.4	(1.1-1.6)	116	100.0	1.3	(1.0-1.5)

*including terminations for congenital abnormalities

Table 44: Infant mortality in Western Australia 2000-2010, by cause of death (PSANZ-NDC)

	2000-2001				2002-2004				2005-2007				2008-2010			
	N	%	Rate (95% CI) per 1000 livebirths		N	%	Rate (95% CI) per 1000 livebirths		N	%	Rate (95% CI) per 1000 livebirths		N	%	Rate (95% CI) per 1000 livebirths	
1. Congenital abnormality*	52	23.4	1.0	(0.8-1.4)	59	22.7	0.8	(0.6-1.0)	93	30.1	1.1	(0.9-1.3)	95	29.7	1.0	(0.8-1.3)
2. Extreme prematurity	41	18.5	0.8	(0.6-1.1)	45	17.3	0.6	(0.5-0.8)	61	19.7	0.7	(0.6-0.9)	63	19.7	0.7	(0.5-0.9)
3. Cardio-respiratory disorders	23	10.4	0.5	(0.3-0.7)	29	11.2	0.4	(0.3-0.6)	19	6.1	0.2	(0.1-0.3)	17	5.3	0.2	(0.1-0.3)
4. Infection	23	10.4	0.5	(0.3-0.7)	34	13.1	0.5	(0.3-0.6)	28	9.1	0.3	(0.2-0.5)	30	9.4	0.3	(0.2-0.5)
5. Neurological	21	9.5	0.4	(0.3-0.6)	25	9.6	0.3	(0.2-0.5)	38	12.3	0.4	(0.3-0.5)	32	10.0	0.3	(0.2-0.5)
6. Gastrointestinal	9	4.1	0.2	(0.1-0.3)	6	2.3	0.1	(0.0-0.2)	9	2.9	0.1	(0.1-0.2)	7	2.2	0.1	(0.0-0.2)
7.1 SIDS	27	12.2	0.5	(0.4-0.8)	23	8.8	0.3	(0.2-0.5)	44	14.2	0.5	(0.4-0.7)	54	16.9	0.6	(0.5-0.8)
7.2-7.9 Other	25	11.3	0.5	(0.3-0.7)	39	15.0	0.5	(0.4-0.7)	18	5.8	0.2	(0.1-0.3)	22	6.9	0.2	(0.1-0.3)
8. Not classified	1	0.5	0.0	(0.0-0.1)	0	0.0	0.0	(0.0-0.1)	0	0.0	0.0	(0.0-0.0)	0	0.0	0.0	(0.0-0.0)
Total	222	100.0	4.5	(3.9-5.1)	260	100.0	3.5	(3.1-3.9)	309	100.0	3.6	(3.2-4.1)	320	100.0	3.5	(3.1-3.9)

*including terminations for congenital abnormalities

Table 45: Cases Investigated: Stillbirths in Western Australia 2002-2010, by cause of death (PSANZ-PDC)

	2002-2004				2005-2007				2008-2010			
	N	%	Rate (95% CI)	per 1000 births	N	%	Rate (95% CI)	per 1000 births	N	%	Rate (95% CI)	per 1000 births
1. Congenital abnormality	32	12.5	0.4	(0.3-0.6)	22	8.8	0.3	(0.2-0.4)	38	12.5	0.4	(0.3-0.6)
2. Perinatal infection	15	5.9	0.2	(0.1-0.3)	5	2.0	0.1	(0.0-0.1)	17	5.6	0.2	(0.1-0.3)
3. Hypertension	31	12.1	0.4	(0.3-0.6)	19	7.6	0.2	(0.1-0.3)	17	5.6	0.2	(0.1-0.3)
4. Antepartum haemorrhage	18	7.0	0.2	(0.2-0.4)	15	6.0	0.2	(0.1-0.3)	20	6.6	0.2	(0.2-0.4)
5. Maternal conditions	17	6.6	0.2	(0.1-0.4)	22	8.8	0.3	(0.2-0.4)	33	10.9	0.4	(0.3-0.5)
6. Specific perinatal conditions	19	7.4	0.3	(0.2-0.4)	34	13.5	0.4	(0.3-0.6)	41	13.5	0.4	(0.3-0.6)
7. Hypoxic peripartum death	15	5.9	0.2	(0.1-0.3)	14	5.6	0.2	(0.1-0.3)	15	5	0.2	(0.1-0.3)
8. Fetal growth restriction	29	11.3	0.4	(0.3-0.6)	33	13.1	0.4	(0.3-0.5)	44	14.5	0.5	(0.4-0.6)
9. Spontaneous preterm	3	1.2	0.0	(0.0-0.1)	3	1.2	0.0	(0.0-0.1)	1	0.3	0.0	(0.0-0.1)
10. Unexplained antepartum death	77	30.1	1.0	(0.8-1.3)	84	33.5	1.0	(0.8-1.2)	76	25.1	0.8	(0.7-1.0)
11. No obstetric antecedent	0	0.0	0.0	(0.0-0.1)		0.0	0.0	(0.0-0.1)	1	0.3	0.0	(0.0-0.1)
Total	256	100.0	3.4	(3.0-3.9)	251	100.0	2.9	(2.6-3.3)	303	100	3.3	(2.9-3.6)

Table 46: Cases Investigated: Neonatal mortality in Western Australia 2002-2010, by cause of death (PSANZ-PDC)

	2002-2004				2005-2007				2008-2010			
	N	%	Rate (95% CI)	per 1000 livebirths	N	%	Rate (95% CI)	per 1000 livebirths	N	%	Rate (95% CI)	per 1000 livebirths
1. Congenital abnormality	37	37.8	0.5	(0.4-0.7)	42	43.8	0.5	(0.4-0.7)	56	45.2	0.6	(0.5-0.8)
2. Perinatal infection	10	10.2	0.1	(0.1-0.2)	7	7.3	0.1	(0.0-0.2)	11	8.9	0.1	(0.1-0.2)
3. Hypertension	1	1.0	0.0	(0.0-0.1)	3	3.1	0.0	(0.0-0.1)	4	3.2	0.0	(0.0-0.1)
4. Antepartum haemorrhage	2	2.0	0.0	(0.0-0.1)	5	5.2	0.1	(0.0-0.1)	9	7.3	0.1	(0.1-0.2)
5. Maternal conditions	1	1.0	0.0	(0.0-0.1)	1	1.0	0.0	(0.0-0.1)	4	3.2	0.0	(0.0-0.1)
6. Specific perinatal conditions	6	6.1	0.1	(0.0-0.2)	5	5.2	0.1	(0.0-0.1)	7	5.6	0.1	(0.0-0.2)
7. Hypoxic peripartum death	15	15.3	0.2	(0.1-0.3)	10	10.4	0.1	(0.1-0.2)	12	9.7	0.1	(0.1-0.2)
8. Fetal growth restriction	5	5.1	0.1	(0.0-0.1)	5	5.2	0.1	(0.0-0.1)	4	3.2	0.0	(0.0-0.1)
9. Spontaneous preterm	11	11.2	0.1	(0.1-0.3)	4	4.2	0.0	(0.0-0.1)	3	2.4	0.0	(0.0-0.1)
10. Unexplained antepartum death		0.0	0.0	(0.0-0.1)	0	0.0	0.0	(0.0-0.0)	0	0	0.0	(0.0-0.0)
11. No obstetric antecedent	10	10.2	0.1	(0.1-0.2)	14	14.6	0.2	(0.1-0.3)	14	11.3	0.2	(0.1-0.3)
Total	98	100.0	1.3	(1.1-1.6)	96	100.0	1.1	(0.9-1.4)	124	100	1.3	(1.1-1.6)

Table 47: Cases Investigated: Perinatal mortality in Western Australia 2002-2010, by cause of death (PSANZ-PDC)

	2002-2004				2005-2007				2008-2010			
	N	%	Rate (95% CI)	per 1000 births	N	%	Rate (95% CI)	per 1000 births	N	%	Rate (95% CI)	per 1000 births
1. Congenital abnormality	69	19.5	0.9	(0.7-1.2)	64	18.4	0.7	(0.6-1.0)	94	22.0	1.0	(0.8-1.2)
2. Perinatal infection	25	7.1	0.3	(0.2-0.5)	12	3.5	0.1	(0.1-0.2)	28	6.6	0.3	(0.2-0.4)
3. Hypertension	32	9.0	0.4	(0.3-0.6)	22	6.3	0.3	(0.2-0.4)	21	4.9	0.2	(0.1-0.3)
4. Antepartum haemorrhage	20	5.6	0.3	(0.2-0.4)	20	5.8	0.2	(0.2-0.4)	29	6.8	0.3	(0.2-0.4)
5. Maternal conditions	18	5.1	0.2	(0.2-0.4)	20	6.6	0.2	(0.2-0.4)	37	8.7	0.4	(0.3-0.5)
6. Specific perinatal conditions	25	7.1	0.3	(0.2-0.5)	20	11.2	0.2	(0.2-0.4)	48	11.2	0.5	(0.4-0.7)
7. Hypoxic peripartum death	30	8.5	0.4	(0.3-0.6)	24	6.9	0.3	(0.2-0.4)	27	6.3	0.3	(0.2-0.4)
8. Fetal growth restriction	34	9.6	0.5	(0.3-0.6)	38	11.0	0.4	(0.3-0.6)	48	11.2	0.5	(0.4-0.7)
9. Spontaneous preterm	14	4.0	0.2	(0.1-0.3)	7	2.0	0.1	(0.0-0.2)	4	0.9	0.0	(0.0-0.1)
10. Unexplained antepartum death	77	21.8	1.0	(0.8-1.3)	84	24.2	1.0	(0.8-1.2)	76	17.8	0.8	(0.7-1.0)
11. No obstetric antecedent	10	2.8	0.1	(0.1-0.2)	14	4.0	0.2	(0.1-0.3)	15	3.5	0.2	(0.1-0.3)
							0.0					
Total	354	100.0	4.7	(4.3-5.2)	347	100.0	4.0	(3.6-4.5)	427	100.0	4.6	(4.2-5.0)

Table 48: Cases investigated: Neonatal mortality in Western Australia 2002-2010, by cause of death (PSANZ-NDC)

	2002-2004				2005-2007				2008-2010			
	N	%	Rate (95% CI) per 1000 livebirths		N	%	Rate (95% CI) per 1000 livebirths		N	%	Rate (95% CI) per 1000 livebirths	
1. Congenital abnormality*	36	36.7	0.5	(0.3-0.7)	40	41.7	0.5	(0.3-0.6)	54	43.5	0.6	(0.4-0.8)
2. Extreme prematurity	2	2.0	0.0	(0.0-0.1)	1	1.0	0.0	(0.0-0.1)	2	1.6	0.0	(0.0-0.1)
3. Cardio-respiratory disorders	12	12.2	0.2	(0.1-0.3)	5	5.2	0.1	(0.0-0.1)	8	6.5	0.1	(0.0-0.2)
4. Infection	11	11.2	0.1	(0.1-0.3)	10	10.4	0.1	(0.0-0.2)	14	11.3	0.2	(0.1-0.3)
5. Neurological	21	21.4	0.3	(0.2-0.4)	20	20.8	0.2	(0.2-0.4)	26	21.0	0.3	(0.2-0.4)
6. Gastrointestinal	4	4.1	0.1	(0.0-0.1)	2	2.1	0.0	(0.0-0.1)	5	4.0	0.1	(0.0-0.1)
7.1 SIDS and other	12	12.2	0.2	(0.1-0.3)	18	18.8	0.2	(0.1-0.3)	15	12.1	0.2	(0.1-0.3)
Total	98	100.0	1.3	(1.1-1.6)	96	100.0	1.1	(0.9-1.4)	124	100.0	1.3	(1.1-1.6)

*including terminations for congenital abnormalities

Table 49: Cases investigated: Postneonatal mortality in Western Australia 2002-2010, by cause of death (PSANZ-NDC)

	2002-2004				2005-2007				2008-2010			
	N	%	Rate (95% CI) per 1000 livebirths		N	%	Rate (95% CI) per 1000 livebirths		N	%	Rate (95% CI) per 1000 livebirths	
1. Congenital abnormality*	22	24.2	0.3	(0.2-0.4)	39	35.1	0.5	(0.3-0.6)	27	24.5	0.3	(0.2-0.4)
2. Extreme prematurity	2	2.2	0.0	(0.0-0.1)	0	0.0	0.0	(0.0-0.0)	0	0.0	0.0	(0.0-0.0)
3. Cardio-respiratory disorders	3	3.3	0.0	(0.0-0.1)	7	6.3	0.1	(0.0-0.2)	8	7.3	0.1	(0.0-0.2)
4. Infection	15	16.5	0.2	(0.1-0.3)	15	13.5	0.2	(0.1-0.3)	12	10.9	0.1	(0.1-0.2)
5. Neurological	1	1.1	0.0	(0.0-0.1)	4	3.6	0.0	(0.0-0.1)	2	1.8	0.0	(0.0-0.1)
6. Gastrointestinal	0	0.0	0.0	(0.0-0.1)	3	2.7	0.0	(0.0-0.1)	0	0.0	0.0	(0.0-0.0)
7.1 SIDS and other	48	52.7	0.6	(0.5-0.9)	43	38.7	0.5	(0.4-0.7)	61	55.5	0.7	(0.5-0.8)
Total	91	100.0	1.2	(1.1-1.5)	111	100.0	1.3	(1.1-1.6)	110	100.0	1.2	(1.0-1.4)

*including terminations for congenital abnormalities

Table 50: Cases investigated: Infant mortality in Western Australia 2002-2010, by cause of death (PSANZ-NDC)

	2002-2004			2005-2007			2008-2010			per 1000 livebirths
	N	%	Rate (95% CI) per 1000 livebirths	N	%	Rate (95% CI) per 1000 livebirths	N	%	Rate (95% CI) per 1000 livebirths	
1. Congenital abnormality*	58	30.7	0.8 (0.6-1.0)	79	38.2	0.9 (0.7-1.2)	81	34.6	0.9 (0.7-1.1)	
2. Extreme prematurity	4	2.1	0.1 (0.0-0.1)	1	0.5	0.0 (0.0-0.1)	2	0.9	0.0 (0.0-0.1)	
3. Cardio-respiratory disorders	15	7.9	0.2 (0.1-0.3)	12	5.8	0.1 (0.1-0.2)	16	6.8	0.2 (0.1-0.3)	
4. Infection	26	13.8	0.3 (0.2-0.5)	25	12.1	0.3 (0.2-0.4)	26	11.1	0.3 (0.2-0.4)	
5. Neurological	22	11.6	0.3 (0.2-0.4)	24	11.6	0.3 (0.2-0.4)	28	12.0	0.3 (0.2-0.4)	
6. Gastrointestinal	4	2.1	0.1 (0.0-0.1)	5	2.4	0.1 (0.0-0.1)	5	2.1	0.1 (0.0-0.1)	
7.1 SIDS and other	60	31.7	0.8 (0.6-1.0)	61	29.5	0.7 (0.6-0.9)	76	32.5	0.8 (0.7-1.0)	
Total	189	100.0	2.5 (2.2-2.9)	207	100.0	2.4 (2.1-2.8)	234	100.0	2.5 (2.2-2.9)	

*including terminations for congenital abnormalities



This document can be made available
in alternative formats on request for
a person with a disability.

Produced by Public Health and Clinical Services
© Department of Health 2014

Copyright to this material is vested in the State of Western Australia unless otherwise indicated. Apart from any fair dealing for the purposes of private study, research, criticism or review, as permitted under the provisions of the *Copyright Act 1968*, no part may be reproduced or re-used for any purposes whatsoever without written permission of the State of Western Australia.